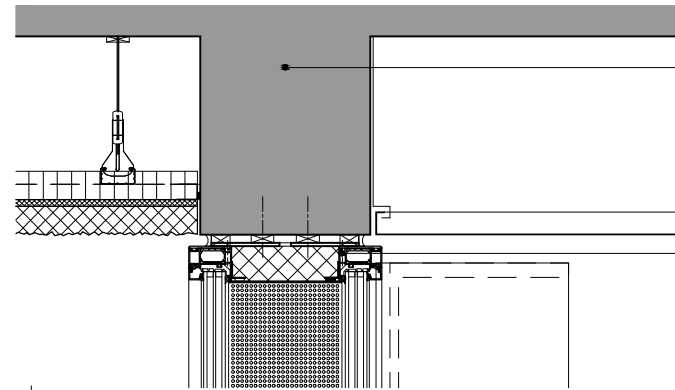


INTERIOR WALLS

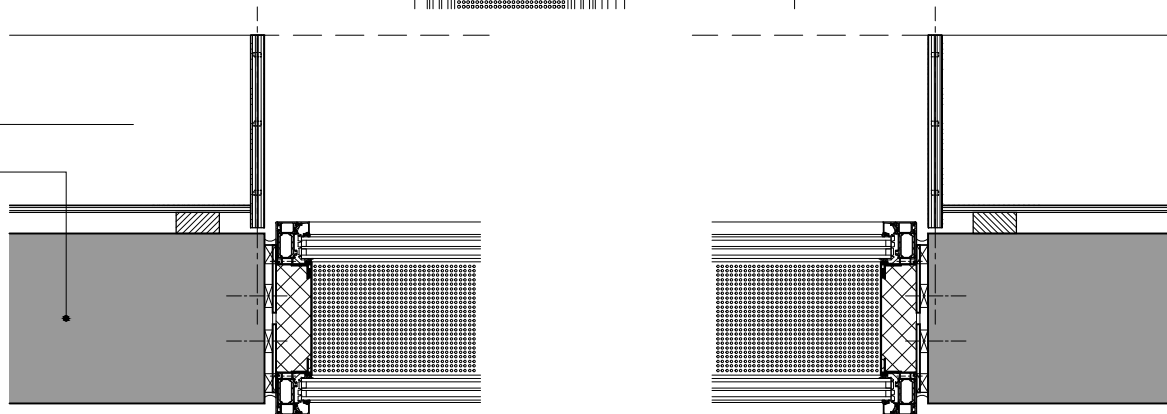


**wall**  
in-situ exposed concrete

**interior walls**  
aluminium, schuco AWS 75  
folded metal sheet

**bookcase**

**wall**  
in-situ exposed concrete



**floor**  
polished concrete 100mm  
floor heating 20mm  
aerated concrete 60mm  
structural concrete

0 100 200 500  
mm