

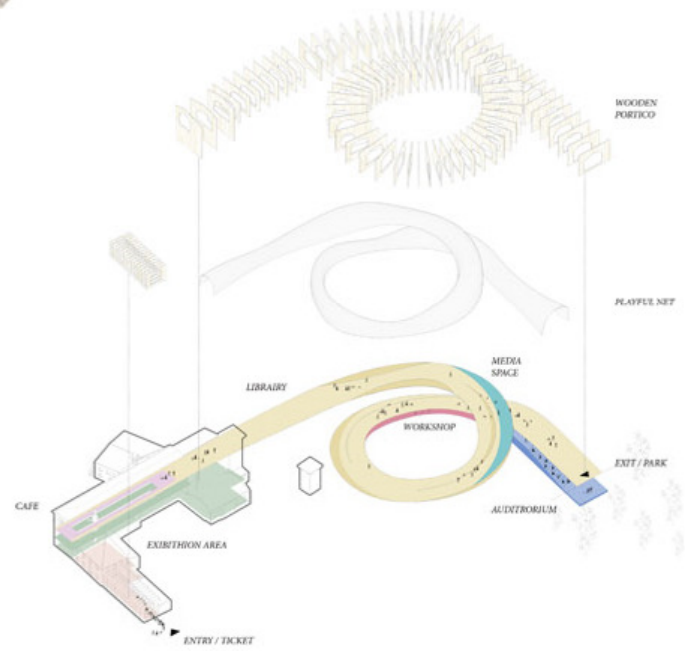


Atmosphere

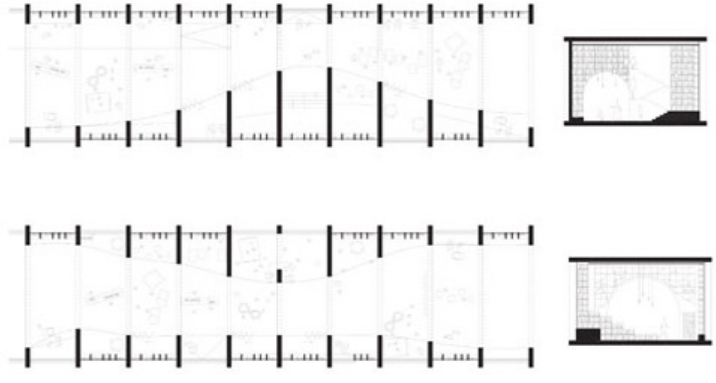
# ***The Fairytale Path***

## **Pinocchio Children's Library competition**

A child's imagination is a powerful and unique thing. Fairytales can teach children an understanding of right and wrong, not through direct teaching, but through implication. The Fairytale Path reveals itself as a formative experience with a beginning and a conclusion. Once upon a time... as well as in a fairytale you enter in a magic indefinite world with no time and no space, fluid, kaleidoscopic. A world when you enter as a child and after having lived several experiences you get out wiser and bigger. The aim of the project is to enhance the spatial features of existing spaces in order to connect them with a new extension. The proposal is to connect the little town of Collodi with the wonderful Pinocchio's park, creating a bond between the paper factory and the theme park. The Fairytale Path takes the children to an imaginary journey, which makes them experience the story as he is truly living it.



Programmatic diagrams



Plans and sections Library 1:200



PAPER FACTORY EXHIBITION AREA AND CAFE



LIBRARY