



ATELIER 2+1
ARCHITECTES



Press Release | November 2015

Paul Sivadon Institut, Day care Psychiatric Institution, Paris 9

ATELIER 2+1
Matthias BORONKAY
Duy-Hiep VO

27, rue des Cordelières
75013 Paris
01 43 31 50 96
atelier@aa21.fr
www.aa21.fr

PLANNING

APRIL 2014

End of redevelopment work and upgrading work in existing buildings.

JANUARY 2011

Architects Briandet and Danjoux appoint Atelier d'architecture 2 + 1, the new partnership of their former project managers, to take over the project.

JANUARY 2011

Delivery of new building and courtyard.

FEBRUARY 2010

Start of works
Start of the partnership between Matthias Boronkay and Duy Hiep-Vo.

APRIL 2008

Project is launched through a steering committee.

2007

The Briandet & Danjoux Agency (with Matthias and Hiep as project managers) is appointed to take over the 1983 study.

BENCHMARKS

OWNER'S PROJECT

Association l'Élan Retrouvé

LOCATION

23, rue de La Rochefoucauld
75009 Paris

PROGRAM

Restructuring and extension of a Psychiatric Institution in occupied site

AREA

SHON 2 500 m²

COST

4 500 000 € HT

SCHEDULE

Delivered in April 2014

ARCHITECTS

Atelier 2 + 1 / Briandet and Danjoux
BET Economist: PHD
CVC / Media: BETHAC
Structure: Bllc
Companies: ENCS / FRI / Moro / Beca / Relief TP / Somen



RESTORE, DESIGN AND BUILD A PSYCHIATRIC ESTABLISHMENT ON AN OCCUPIED SITE

The program, conducted in the psychiatric sector of a hospital, required the restructuring of the headquarters and the rehabilitation of the Institute, together with the building of a new extension of 2300 m². Atelier 2 + 1 was involved in all of the developing the program and in participating in the definition of the requirements with the relevant services and the patients.

The existing building consisted of two perpendicular structures of which the facades were maintained to comply with the provision of ABF (Les architectes des bâtiments de France): a Haussmann building overlooking the street, with a vaulted porch, and a right wing with a modern structure dating from the 1960's. A dreary courtyard was used as parking. The extension which encloses this courtyard now provides continuity and consistency between all the different levels of Haussmann and modern buildings.

The three buildings, including the new restaurant on the ground floor, open today on a new mineral square, which generates light. Above all, this patio symbolizes the desire of the agency to provide soothing living spaces in this health care environment.

As further evidence, the multipurpose room to be found on the first floor and the two spa rooms installed in the basement. This design also made it possible to simplify and optimize the labyrinth that was used as a place of passage.

The mirror effect of the glass extension reflects the distinct character of the two other buildings and brings in the nearby city. The access from the street to the paved courtyard and vice-versa makes it easy for the patients, the majority of whom are ambulatory, to have access to the place with a friendly atmosphere.

In this specific environment, the work was carried out in occupied site with special attention to the welfare of the patients and that of the Institute 'staff.



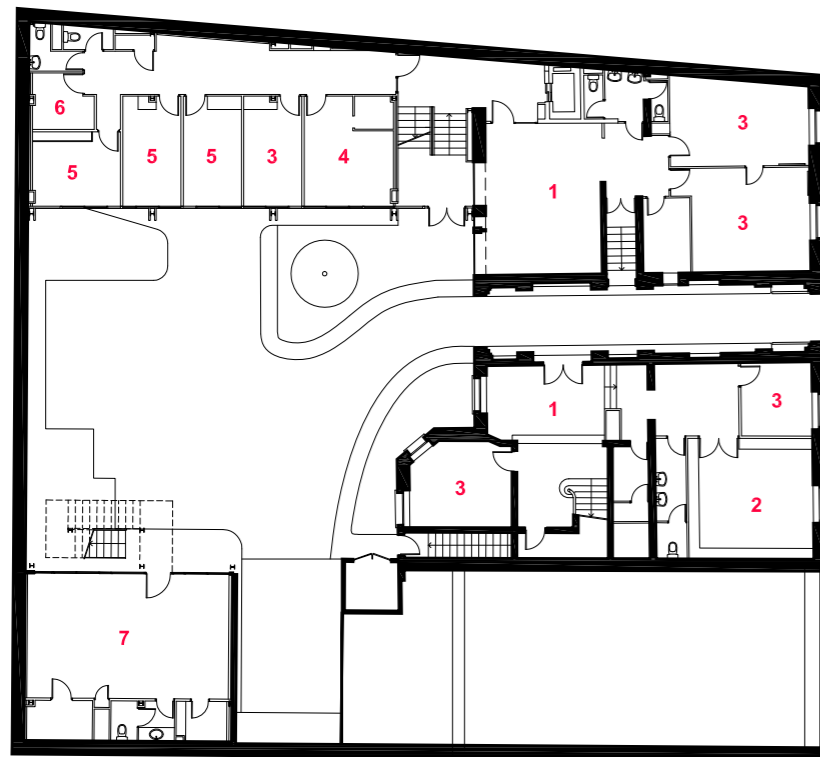
WORKING WITH PATIENTS

With the overall project broadly outlined, it was decided to organize a wide consultation of senior staff as to gather the requirements and wishes of the medical teams. The architects presented a series of consecutive sketches, and after negotiating, a programmatic overview

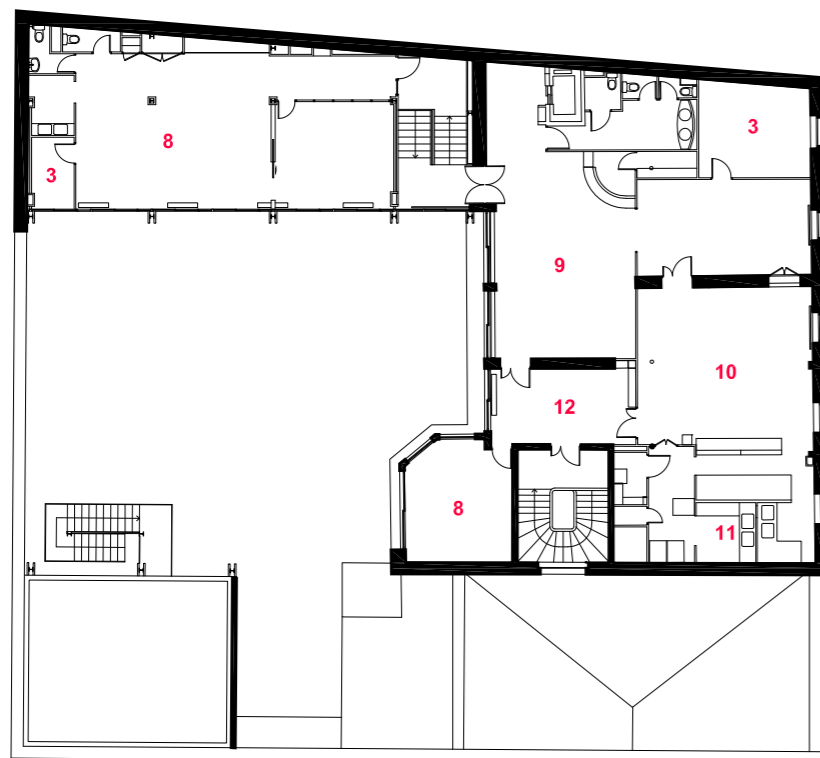
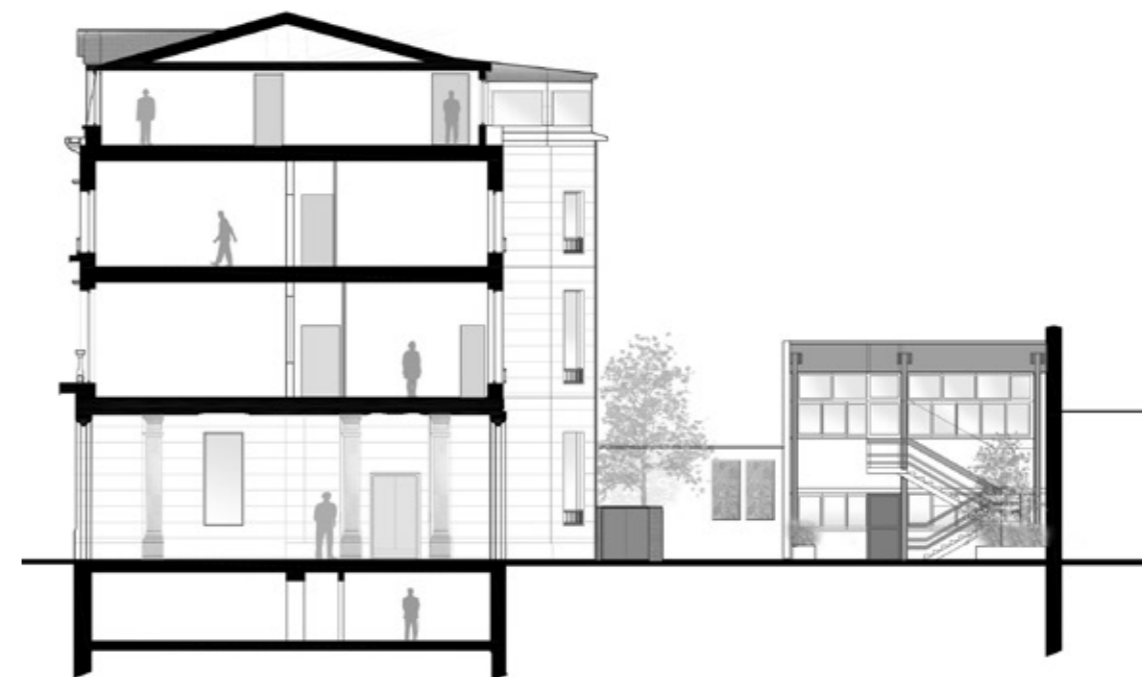
The key word on site was «communication» for both the medical staff and the patients. Site tours were organized with an unexpected success. A workshop «photo coverage / movie» was realized by the patients themselves, as part of their educational activities.

Patient feedback and their understanding was a true reward for stakeholders on site and showed the effectiveness of the measures implemented for consultation: drawings and diagrams showing the space allocation, the desired atmosphere, the planning for each phase of works.

Along with the caring staff, arbitration between demands of different services required the authority of a small committee made up of the medical director, department heads and the director of the association. Indeed, the announcement of the construction of a new building and therefore of additional spaces aroused much envy.

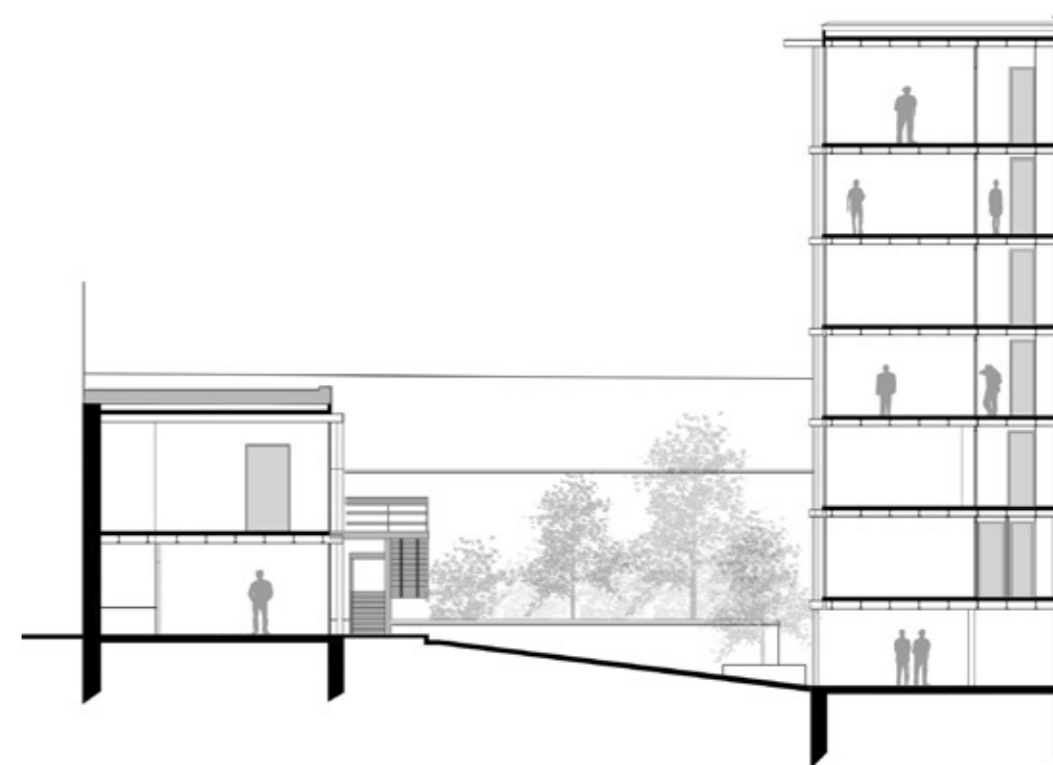


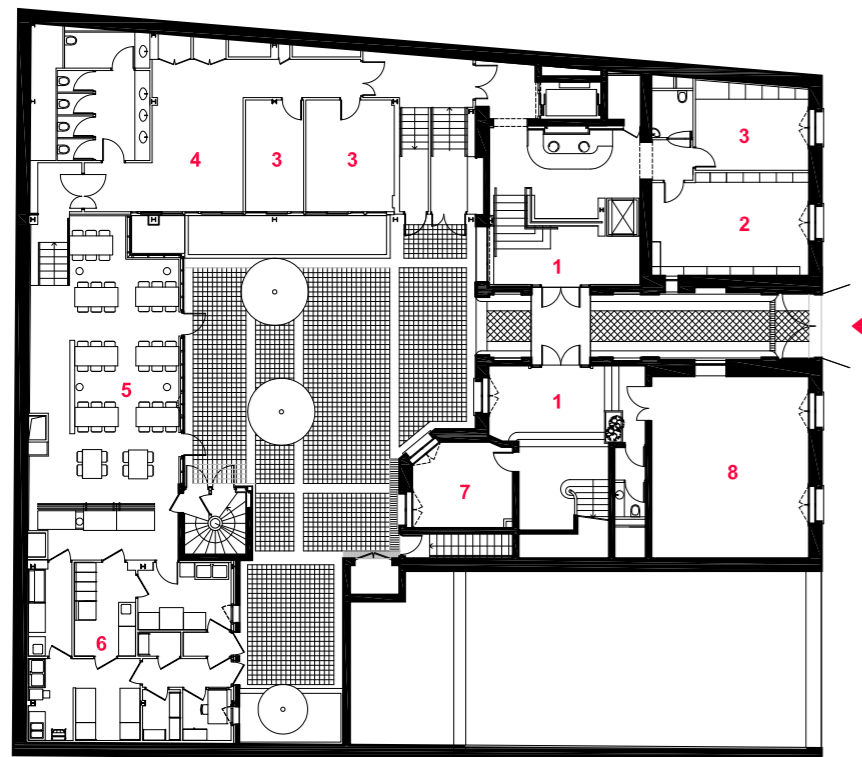
Original ground floor plan



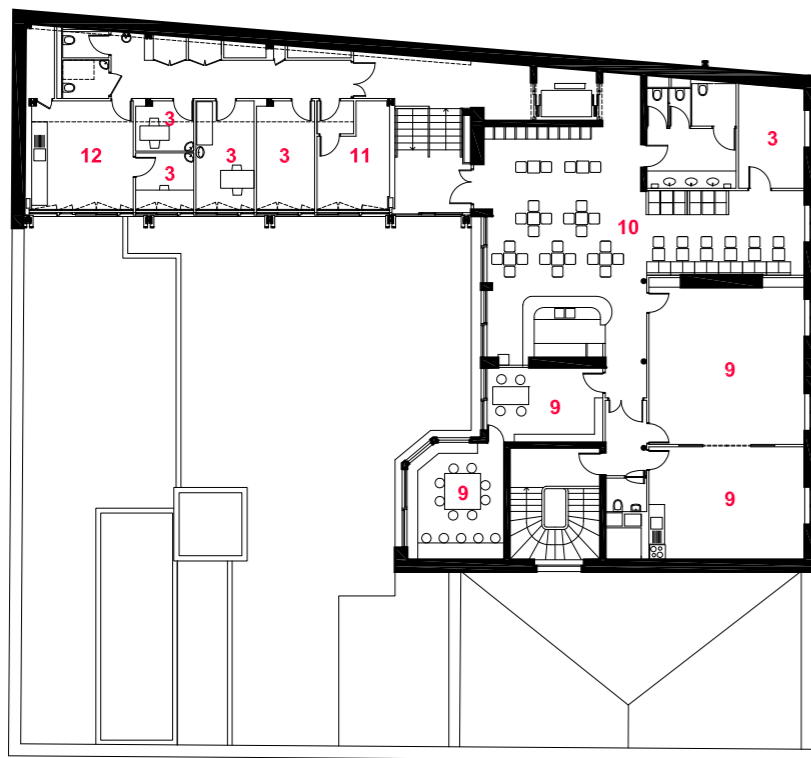
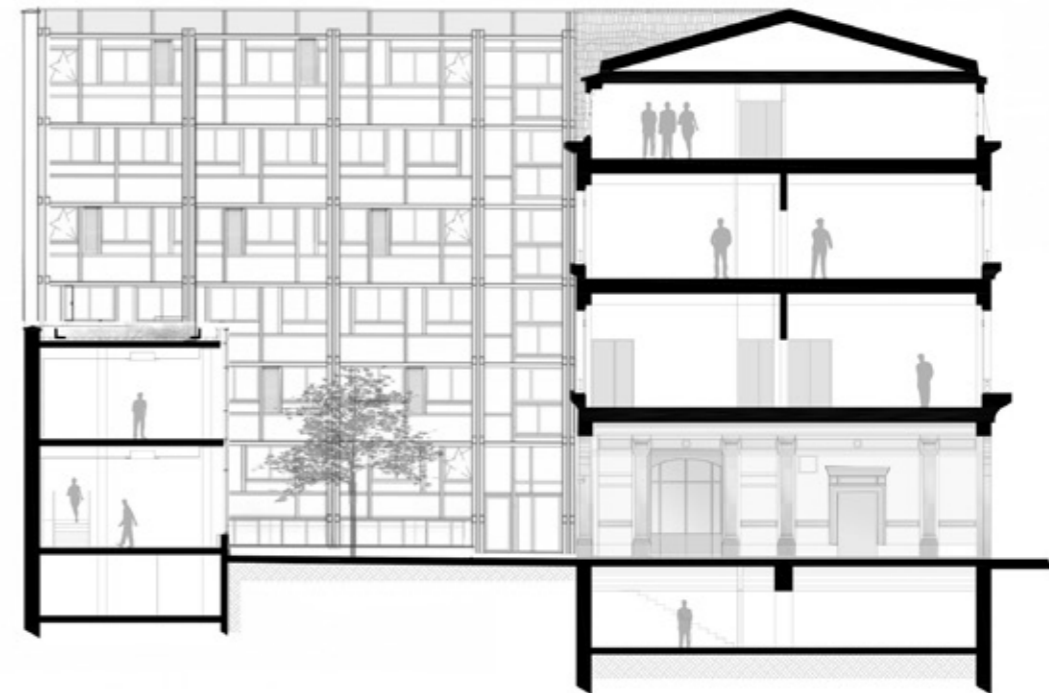
Original 5th Floor plan

- 1 - Lobby
- 2 - Library
- 3 - Office
- 4 - Staff room
- 5 - Consultation
- 6 - Archives
- 7 - Sports room
- 8 - Workshop
- 9 - Lounge
- 10 - Dining room
- 11 - Kitchen
- 12 - Meeting room



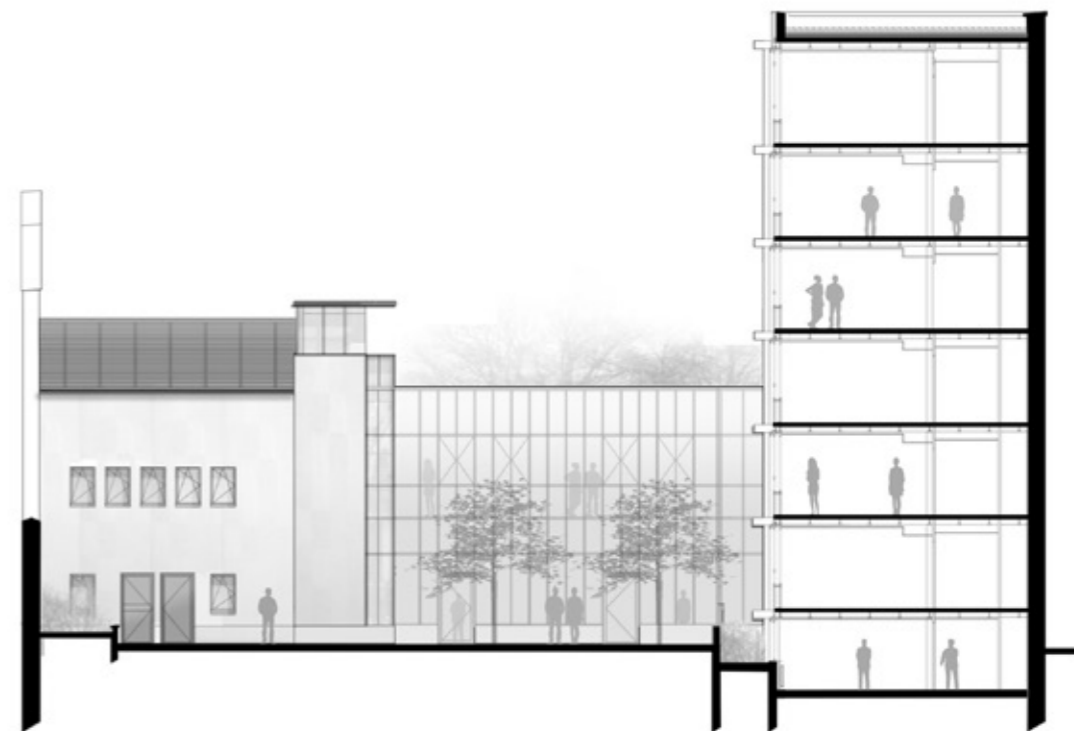


Ground floor plan



5th Floor plan

- 1 - Lobby
- 2 - IT service
- 3 - Office
- 4 - Activity room
- 5 - Restaurant
- 6 - Kitchen
- 7 - Logistics
- 8 - Library
- 9 - Workshop
- 10 - Club
- 11 - Dispensary
- 12 - Infirmary





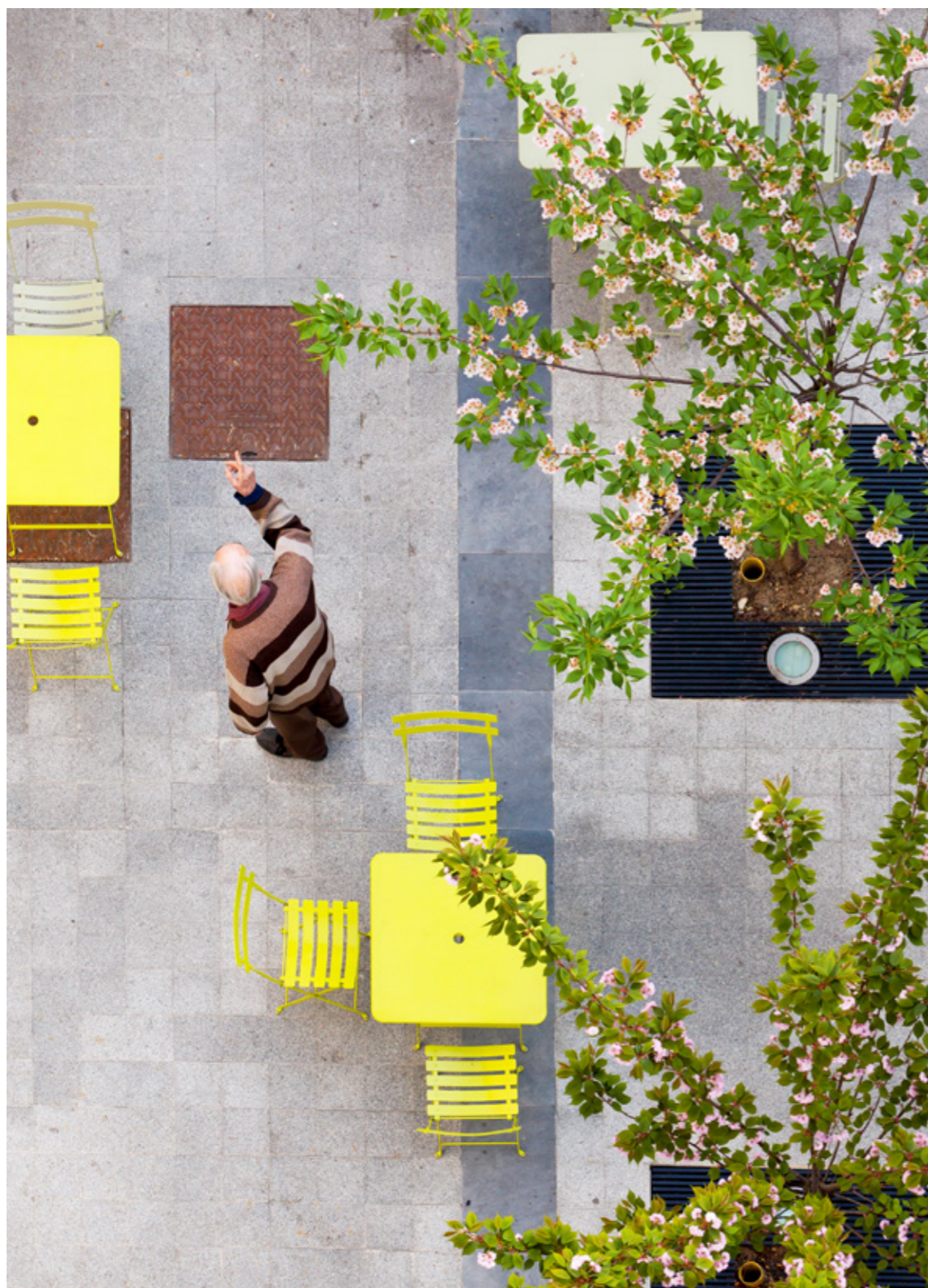












THE ASSOCIATION

The Association Elan retrouvé was founded in 1948 by Professor Paul Sivadon, chief psychiatrist of the Treatment and Social Rehabilitation Center at the psychiatric hospital of Ville Evrard (Seine-Saint-Denis) and Suzanne Baume, work counselor.

The initial goal was to fill the absence of relay institutions to long-term hospitalization and care for the majority of people in the city. Its statutory objective was «to promote the reintegration and rehabilitation of mentally ill and disabled.» The Association was recognized of public utility by the decree of 14 December 1956.

Primarily aimed for outpatient, the aim of the Elan Retrouvé is complementary to that of public or private psychiatry. It is not sectorized and operates in Paris, in the Hauts-de-Seine and in Val-de-Marne. The Association welcomes within its facilities, children, adolescents and young adults with serious development disorders and adults, with psychological or mental disorders and with more or less disabling conditions. Health care institutions of the Association are ESPIC: Private Health Facilities with Collective Interest.

The guidelines of the Association are defined by a supervisory board of 15 members, which relies on the medical expertise of the establishment. The Association currently has more than 330 employees on all sites and more than 3000 people pass through its facilities each year.



Matthias Boronkay et Duy-Hiep Vo

ATELIER D'ARCHITECTURE 2+1

The Atelier d'architecture 2 + 1 was founded in 2010 by Matthias Boronkay and-Duy Hiep Vo, two architects by vocation sharing an entrepreneurial passion. They met in a professional setting. A partnership was born. Their architectural works are even more efficient today as they are part of a mutual goal. Multi skilled, keen on architecture, the building site is inscribed in the DNA of the Agency. They have an acute knowledge of laws, standards and rules of the legal framework of projects. Landmark of this efficient synergy, the equation 2 + 1 actually corresponds to two separate entities plus one which is the sum of both. «Work in progress? «

Without a doubt ! Matthias and-Duy Hiep, beyond the already completed projects can rely on the confidence shown by the project owners with repeat orders. This acknowledgement is reflected by the involvement of the Agency at the very start of the projects, whether it is advising the client for the choice of the land, the assessment of needs or the requirements specification and / or the setting up of the program. These various driving forces allowed them in just a few years, and through sophisticated construction sites, to acquire experiences in various fields. These skills allow the Agency Atelier 2 + 1 to deliver its achievements on time and on budget. Matthias-and Duy Hiep affirm their ambition to work both in the public and private sectors.

CONTACTS

Association l'Élan retrouvé

23 rue de la Rochefoucauld
75009 Paris
+ 33 (0)1 49 70 88 88
elan@elan-retrouve.asso.fr
www.elan-retrouve.fr

ATELIER 2+1 Architectes

Matthias Boronkay Duy-Hiep Vo
27, rue des cordelières
75013 Paris
+33 (0)1 43 31 50 96
atelier@aa21.fr
www.aa21.fr

Communication & Press

Fatma Erhalac
43, rue de la Mare
75020 Paris
+ 33 (0)6 01 48 26 24
contact@fatmaerhalac.com
www.fatmaerhalac.com

CRÉDITS

Photo Credit

Sergio Grazia
www.sergiograzia.fr

Graphic design

Pascaline Minella
www.pascalineminella.fr

Construction photographs, plans and texts

ATELIER 2+1 Architectes

