



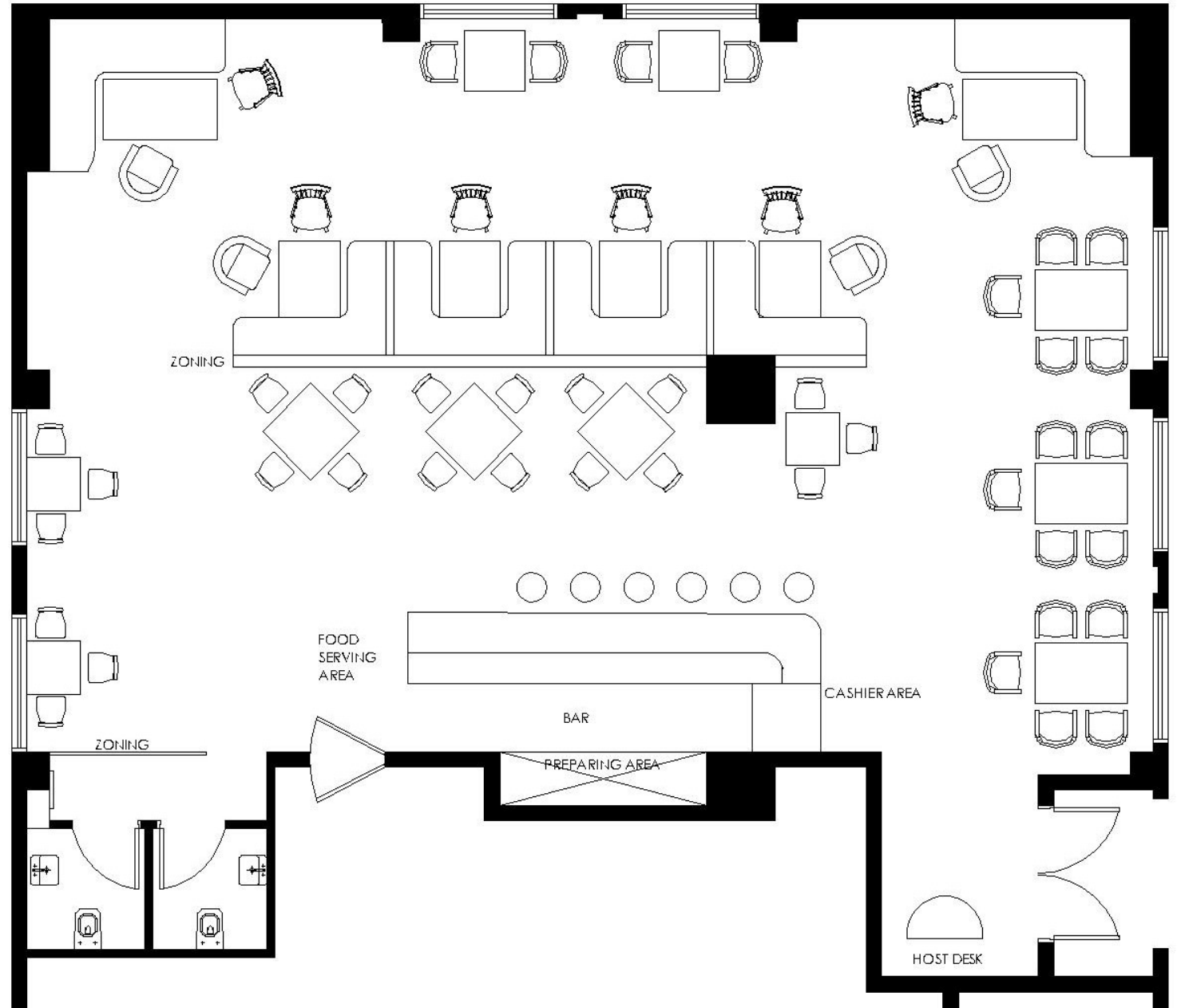
STAGE 1:

**FURNITURE & JOINERY DIRECTION
INTERIOR DESIGN CONCEPT PROPOSAL**

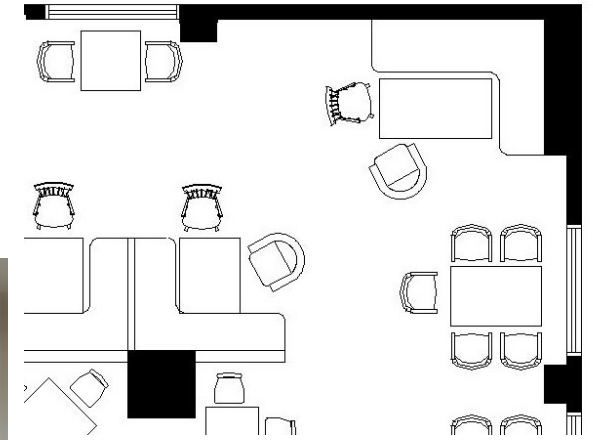
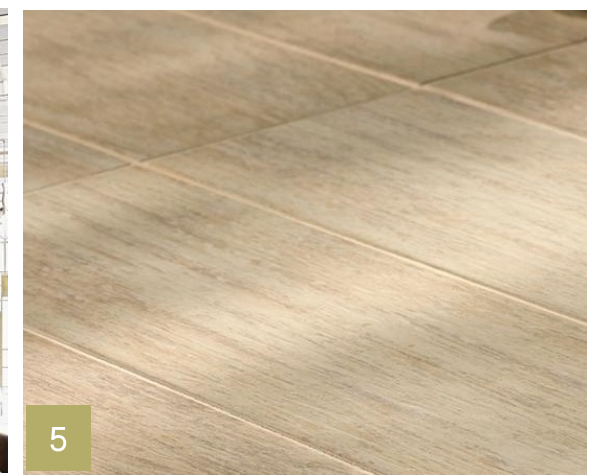
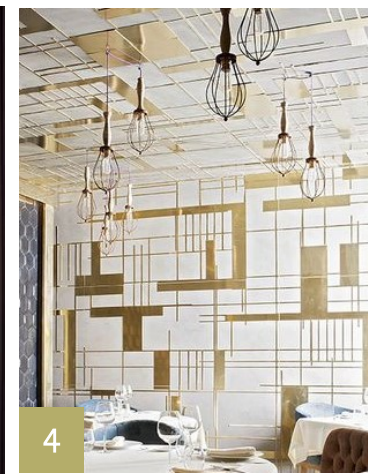
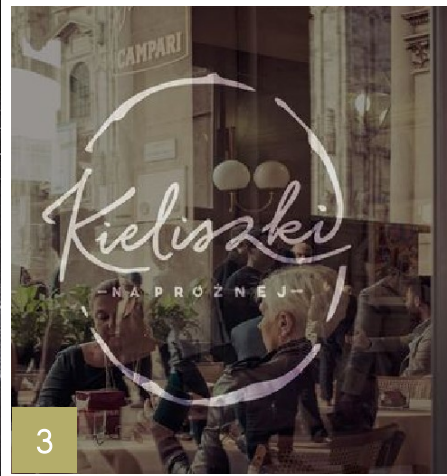




GENERAL CONCEPT DIRECTION LAYOUT PLAN



GENERAL CONCEPT DIRECTION
DINING AREA



1. General concept idea/ color combination/ natural colors
2. General ceiling concept
3. Window logo mark
4. Metal or Brass partitions for the area zoning
5. Wood flooring/ Wood effect porcelain stoneware

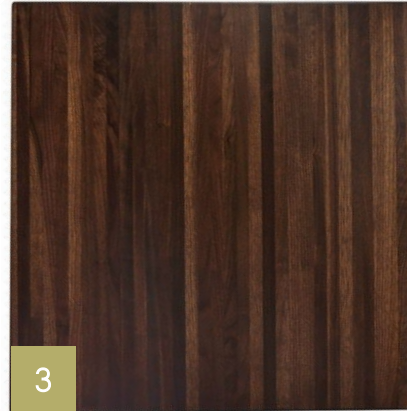
**FURNITURE SELECTION
DINING AREA**



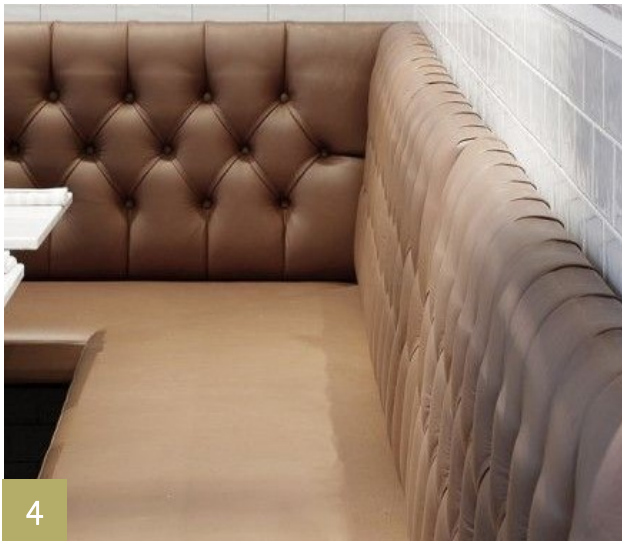
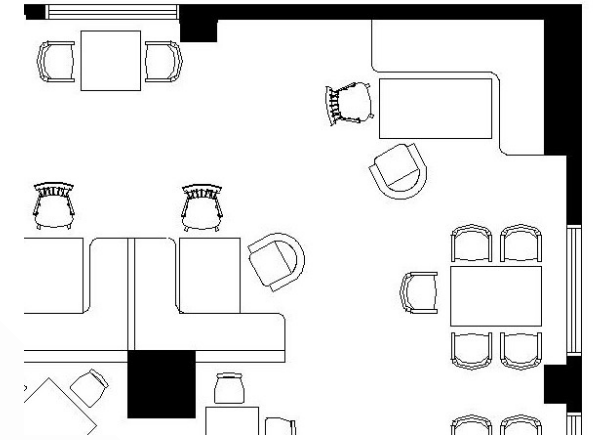
1



2



3



4



5



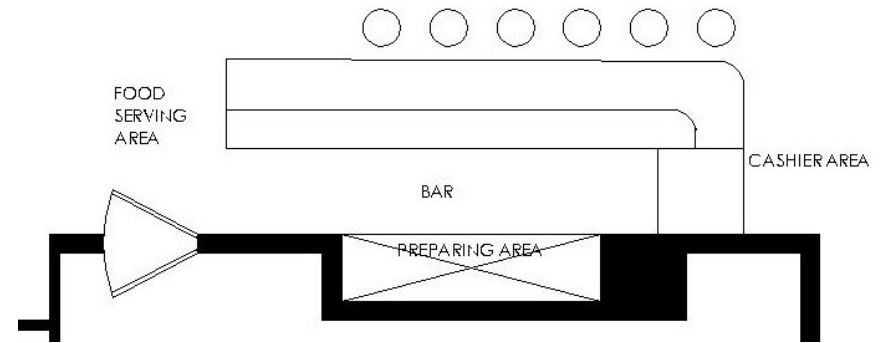
6



7

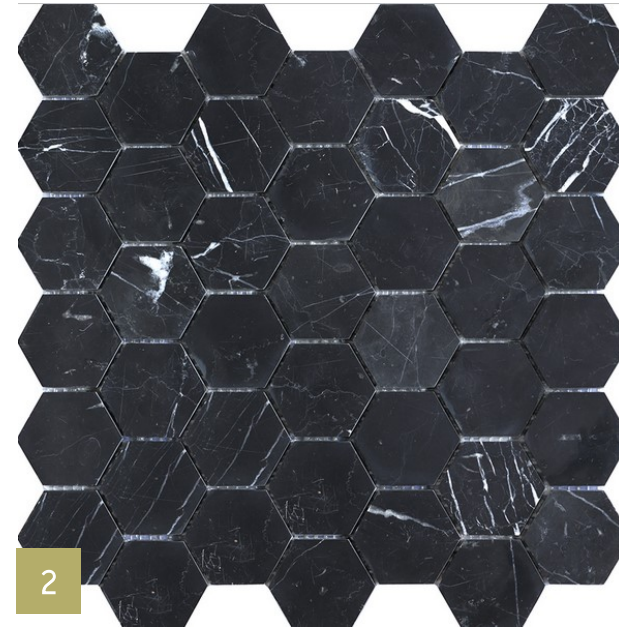
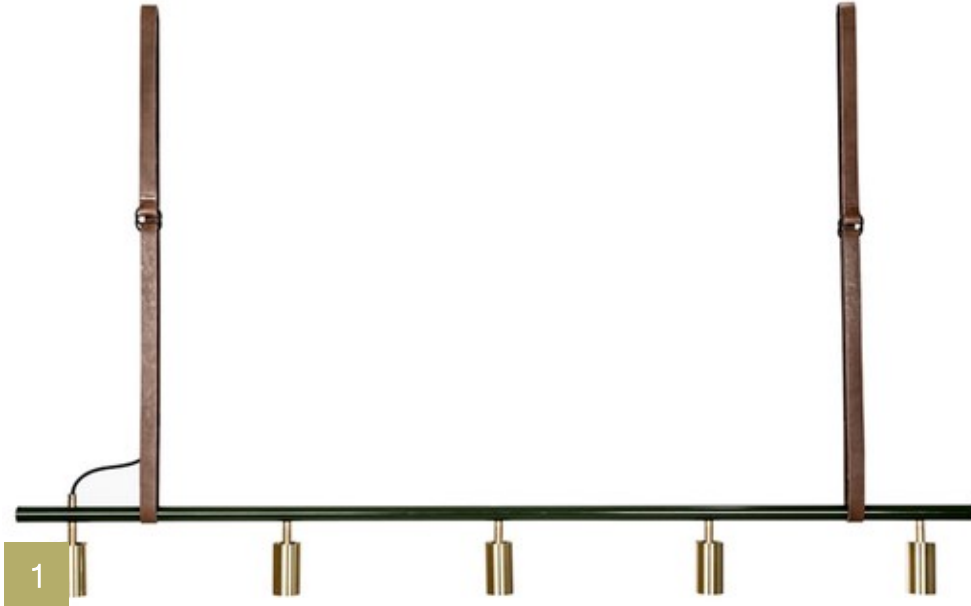
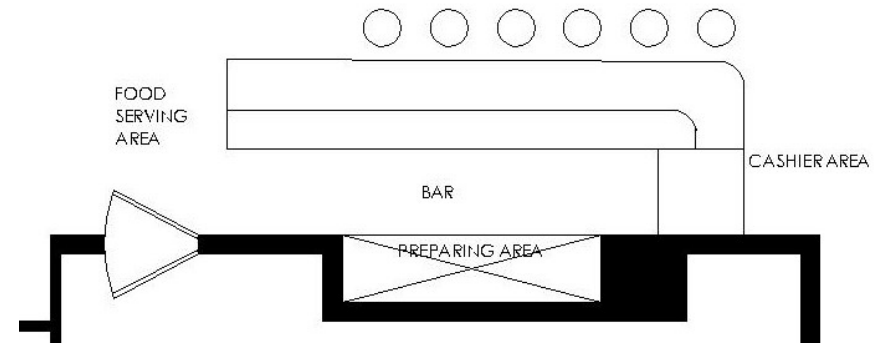
1. Ade Side Chair/ Taupe 2. Spunk Dining Arm Chair/ Mocha 3. Walnut Butcher Block Chocolate
4. brown leather benches 5. Table base/ Prong Style at Dining Height
6. cubic wall light 7. Possi Wired Colorful Globe Glass Single Light Pendant

GENERAL CONCEPT DIRECTION
BAR AREA



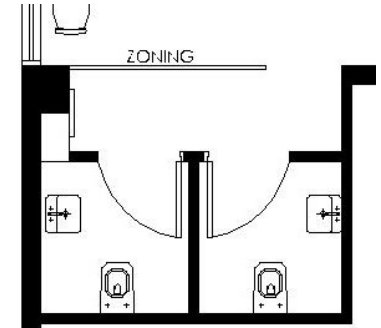
1. Back bar shelving general concept 2. Counter Concept in 2 levels with brass cladding in front

FURNITURE SELECTION
BAR AREA



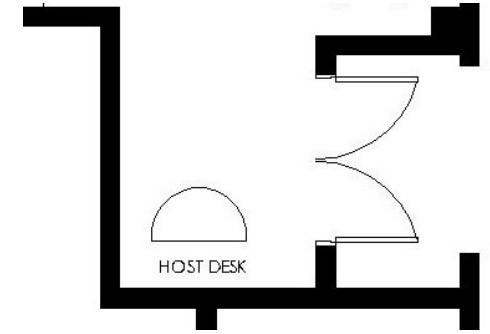
1. Long John pendant light/ Long John 7: 260cmw, 7 lights
2. Black tile flooring for the bar area
3. Adjustable Height Swivel Bar Stool with Cushion

GENERAL CONCEPT DIRECTION
RESTROOM



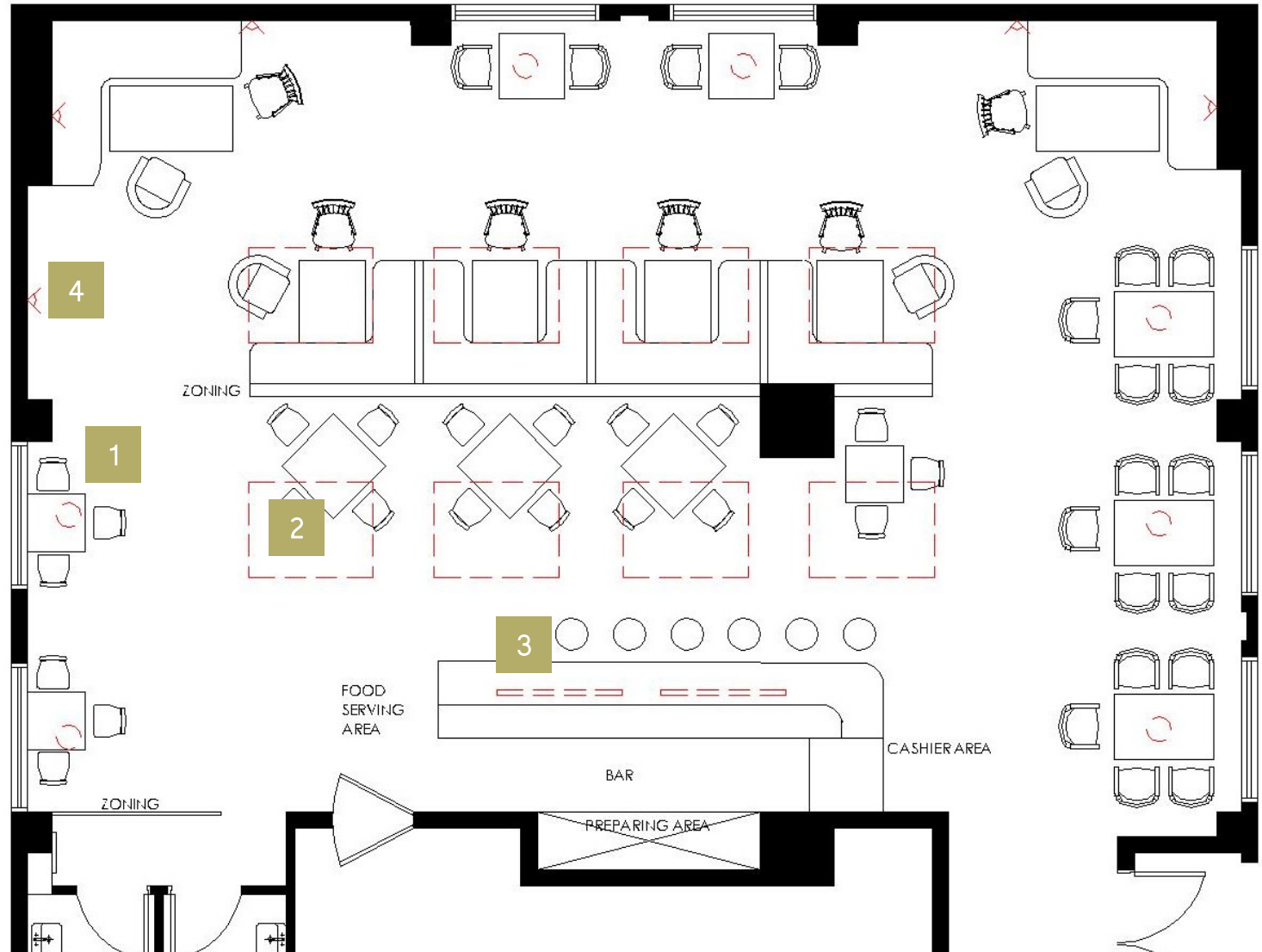
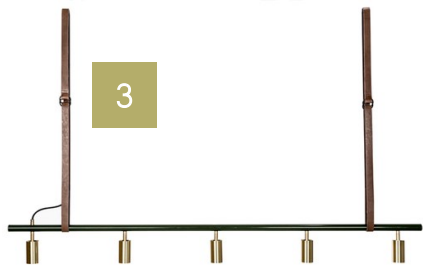
1. Restroom general concept/ beige & dark gray
2. Black or dark gray wooden door with the horizontal gaps
3. Wooden patterned partition in the restroom front

GENERAL CONCEPT DIRECTION
ENTRANCE & HOST DESK

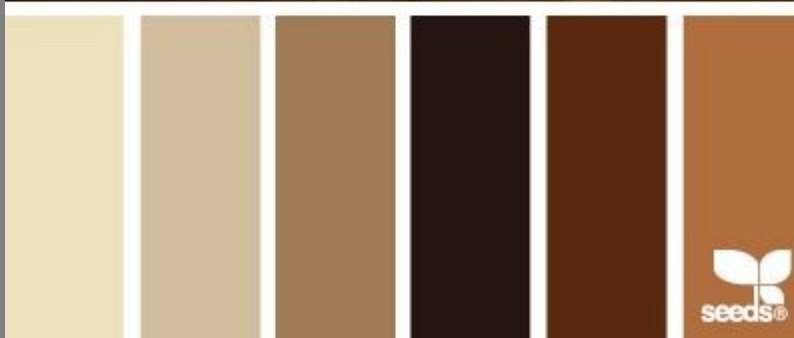
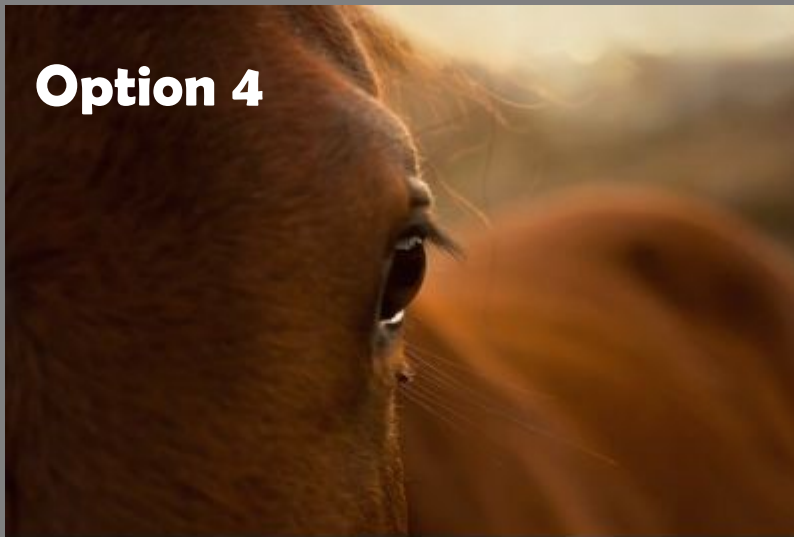
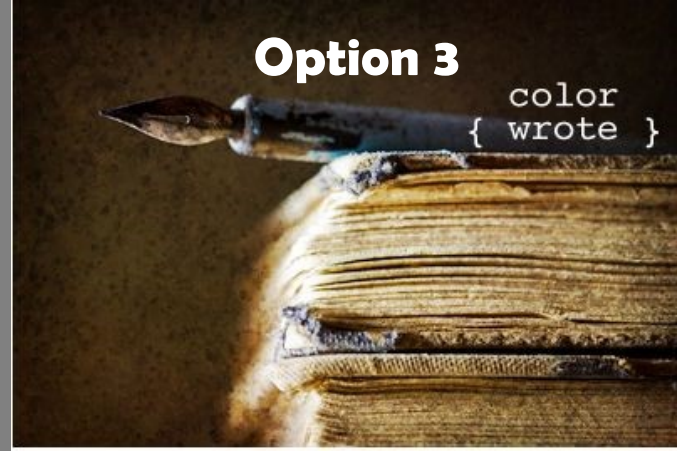


1. Wall lighting in front of entrance
2. Yellow Crepe Bechamel logo on the front wall in Neon light
3. Wooden curved host desk/ in combination with the used wood in design

GENERAL CEILING LAYOUT



1. Dining table pendant light 2. metallic composite panel top of the benches
3. bar lighting 4. wall lighting



Optional
Color palette
Please let us know what you prefer, we will adjust the color combination in design.



Client: Walid Hamed
Designer: Deniz Kaya