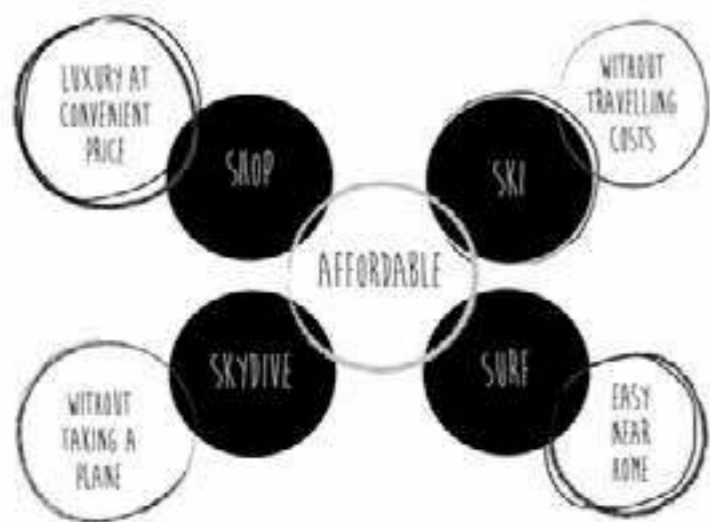
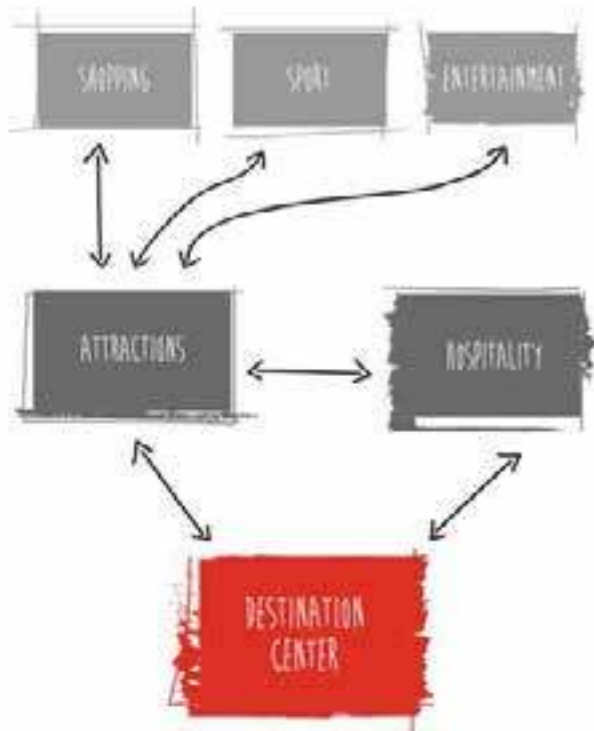




JIHUA PARK

THE FASHION SPORT & LEISURE
DESTINATION IN CHINA



TOURISTIC DESTINATION CENTERS

More than 35 destination centers offering a travel, shopping, sports and exclusive entertainment experience that you will find nowhere else in China, together with world-class hotel and restaurant facilities.

The Jihua Park project will ensure between 3 and 4 million visitors per location and is already a winner with Chinese tourism professionals, reassured by the guarantee of exclusive content and experienced management.

THE NETWORK

MORE THAN 35
DESTINATION CENTERS
IN CHINA

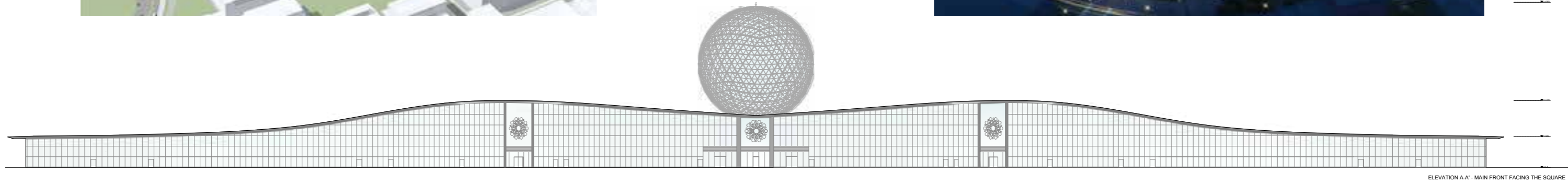
The locations of the destination centers have been carefully selected based on the most advanced market research.

To ensure optimum performance and profitability, the development, management, and promotion teams comprise a blend of international and local professionals, all of them with proven track records and strong educational backgrounds.

JIHUA PARK CONCEPT

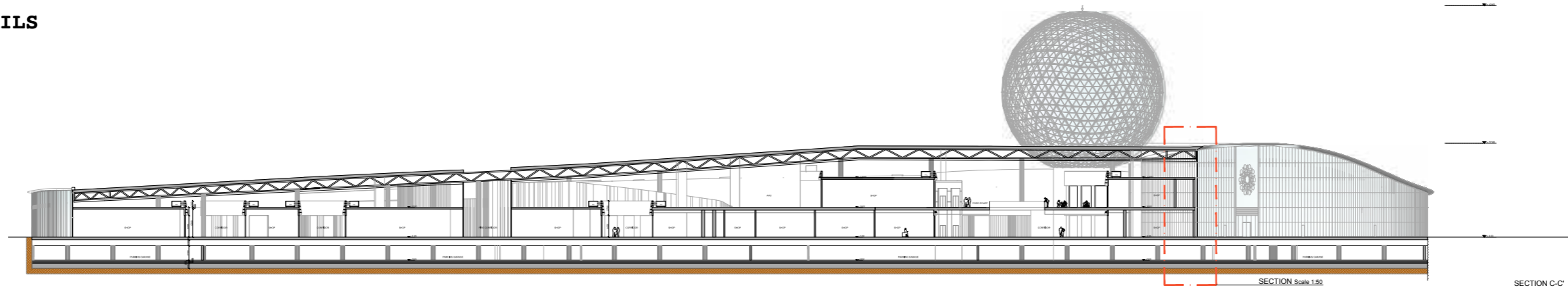


CHANGCHUNG DESTINATION CENTER



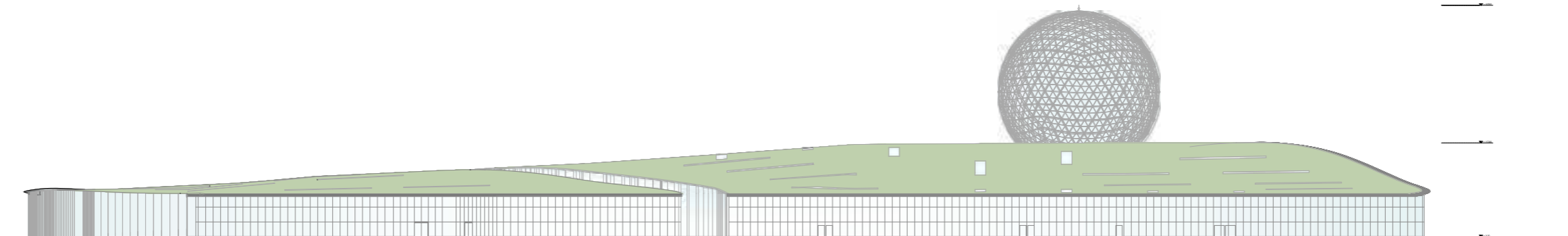
ELEVATION A-A' - MAIN FRONT FACING THE SQUARE

SHOPPINGHUB DETAILS



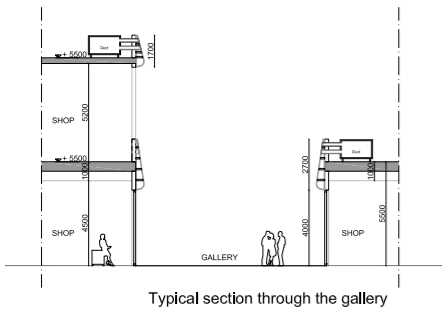
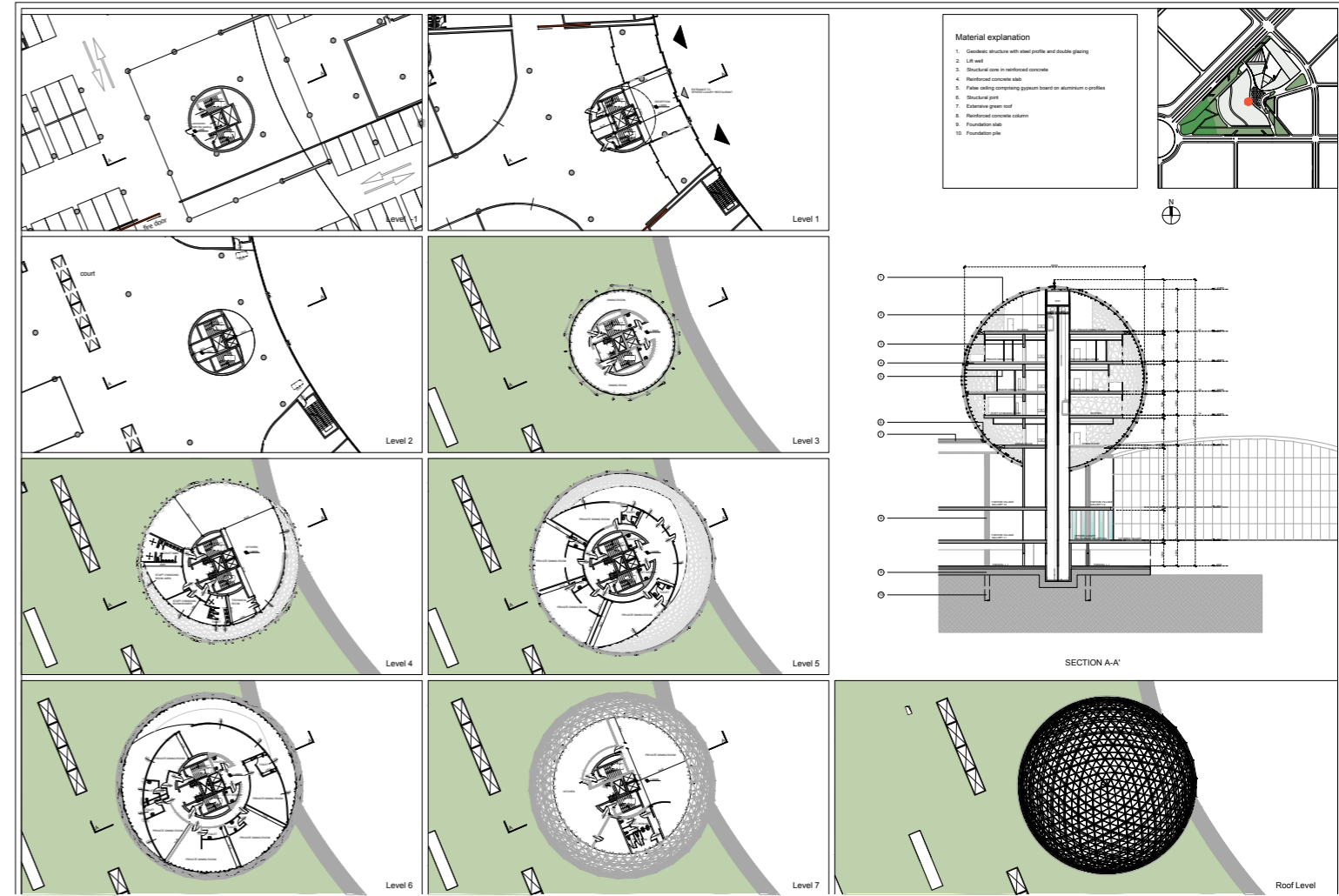
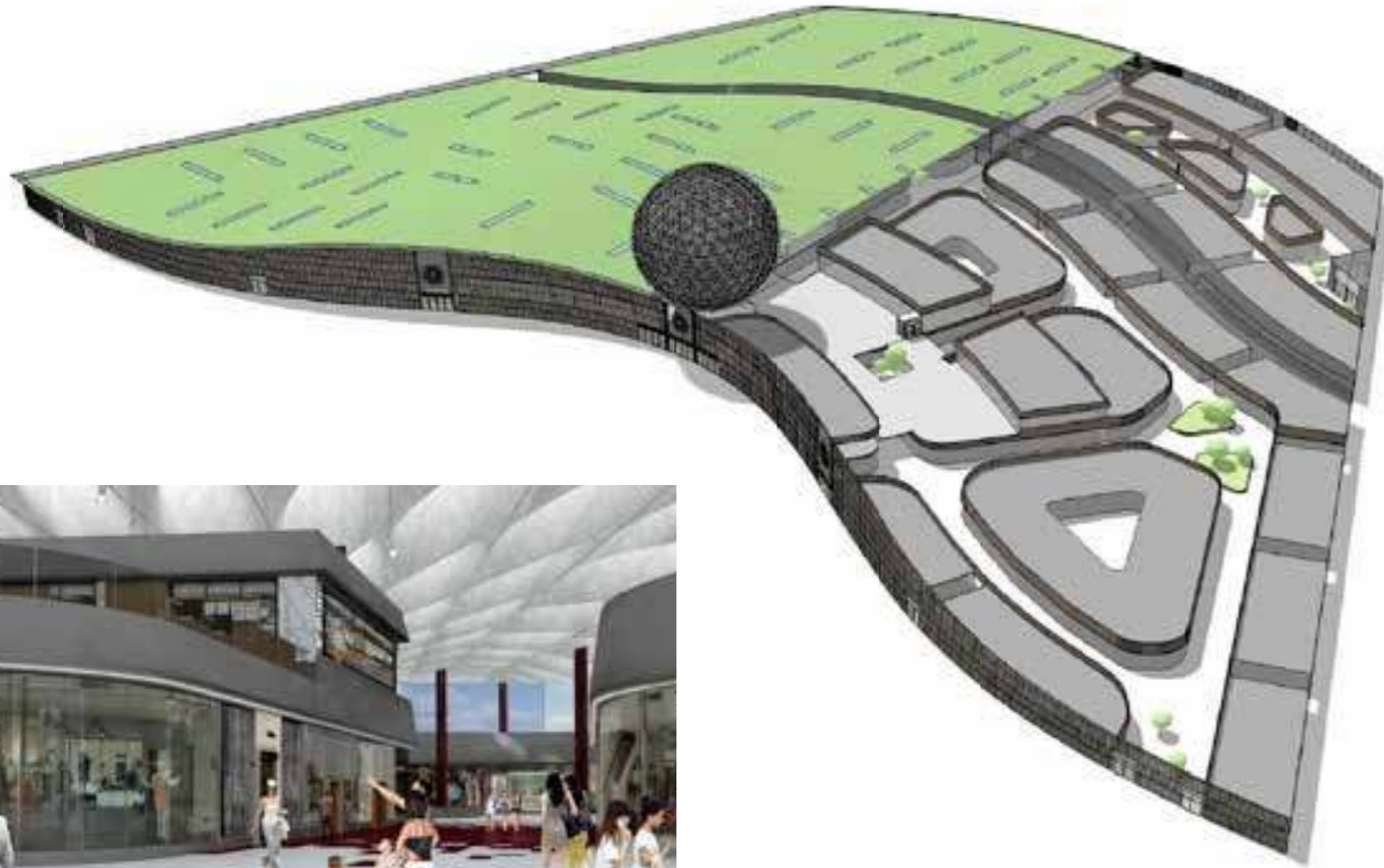
SECTION Scale 1:50

SECTION C-C'

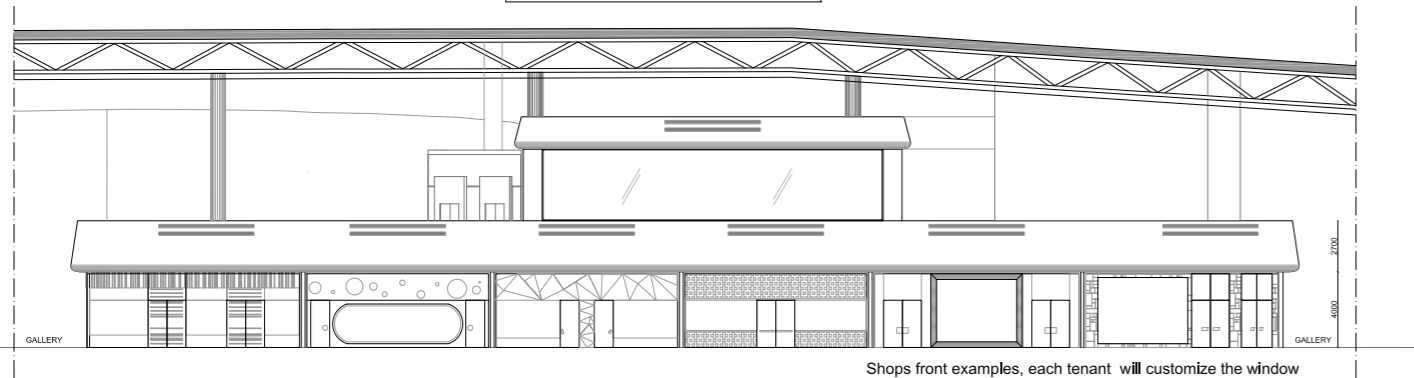


ELEVATION B-B'

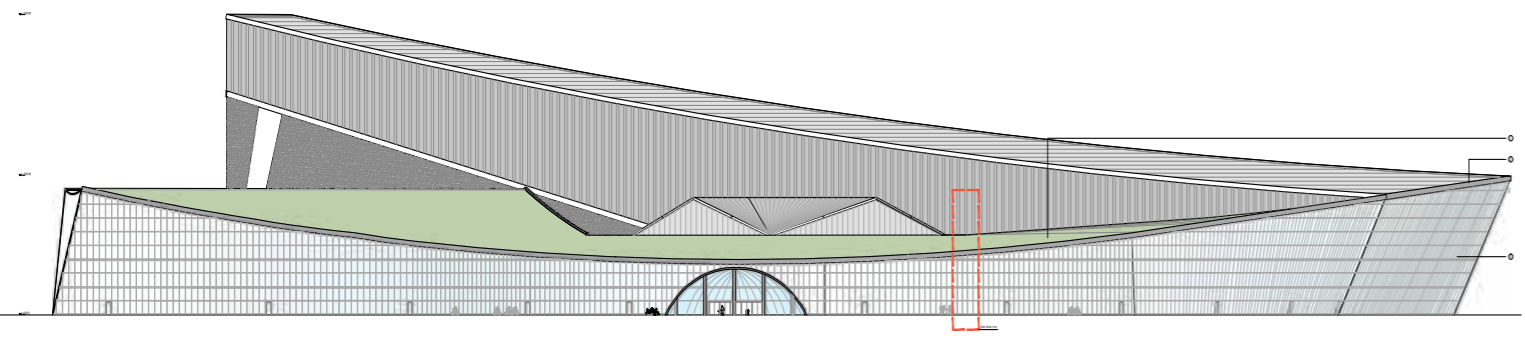
SPHERE DETAILS



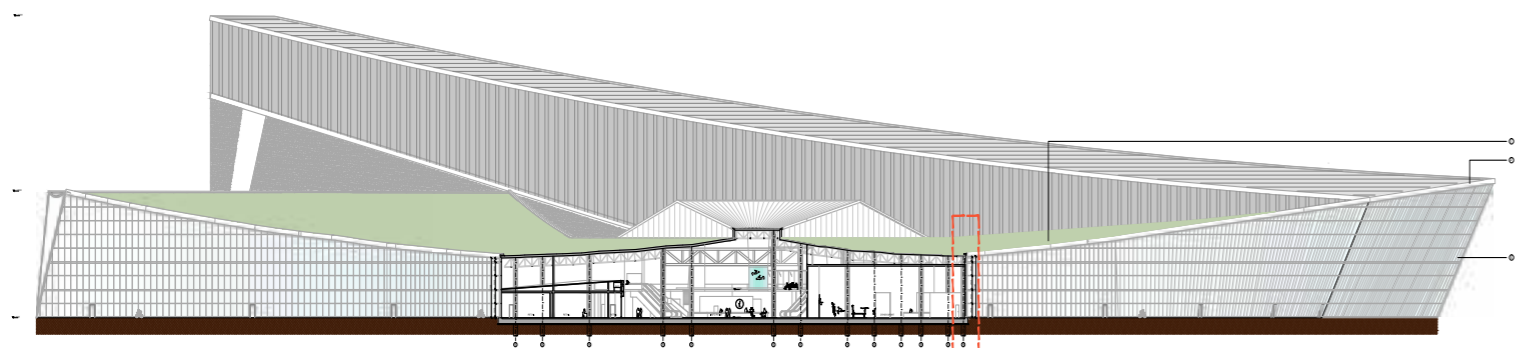
The floor's design scheme will be defined in detail when the material and the size of the tiles will be decided. The texture will be different at the square and through the gallery.



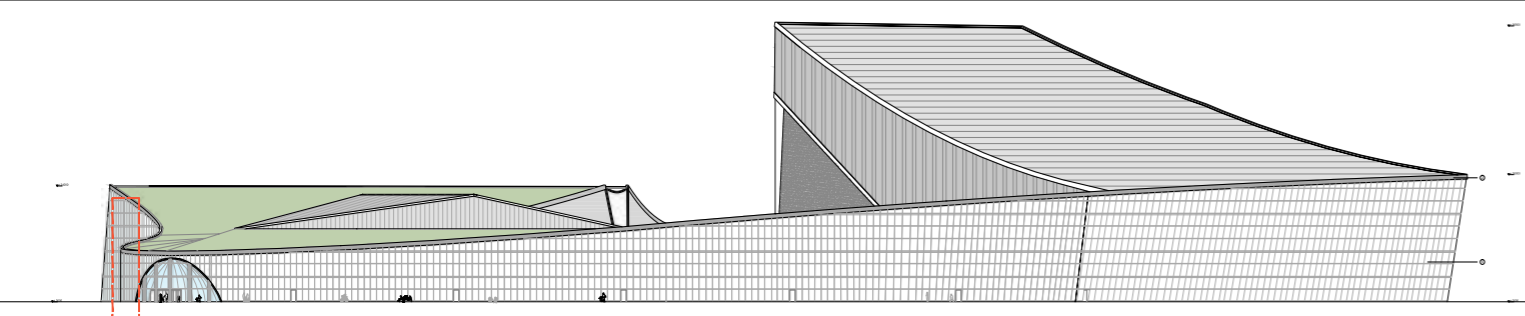
SPORTSHUB DETAILS



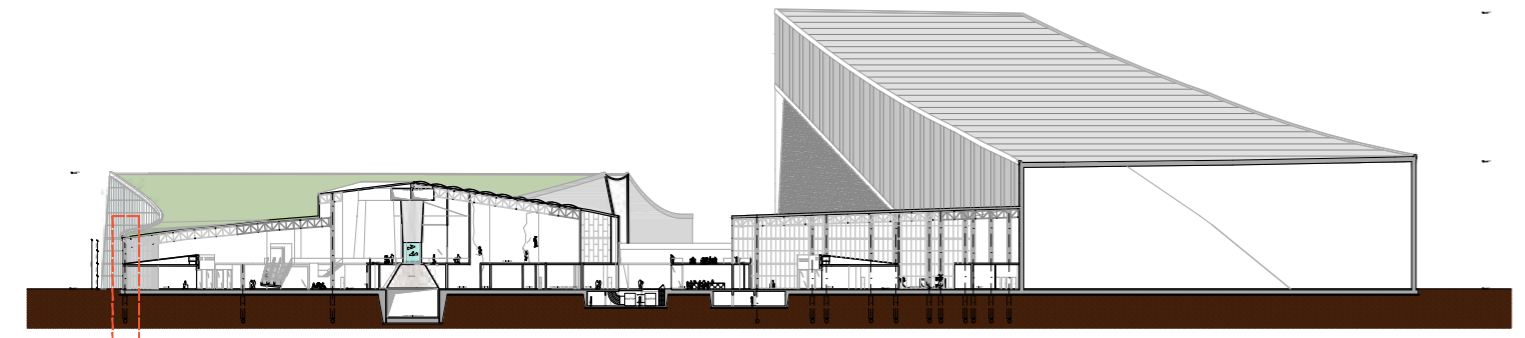
ELEVATION DD



SECTION BB

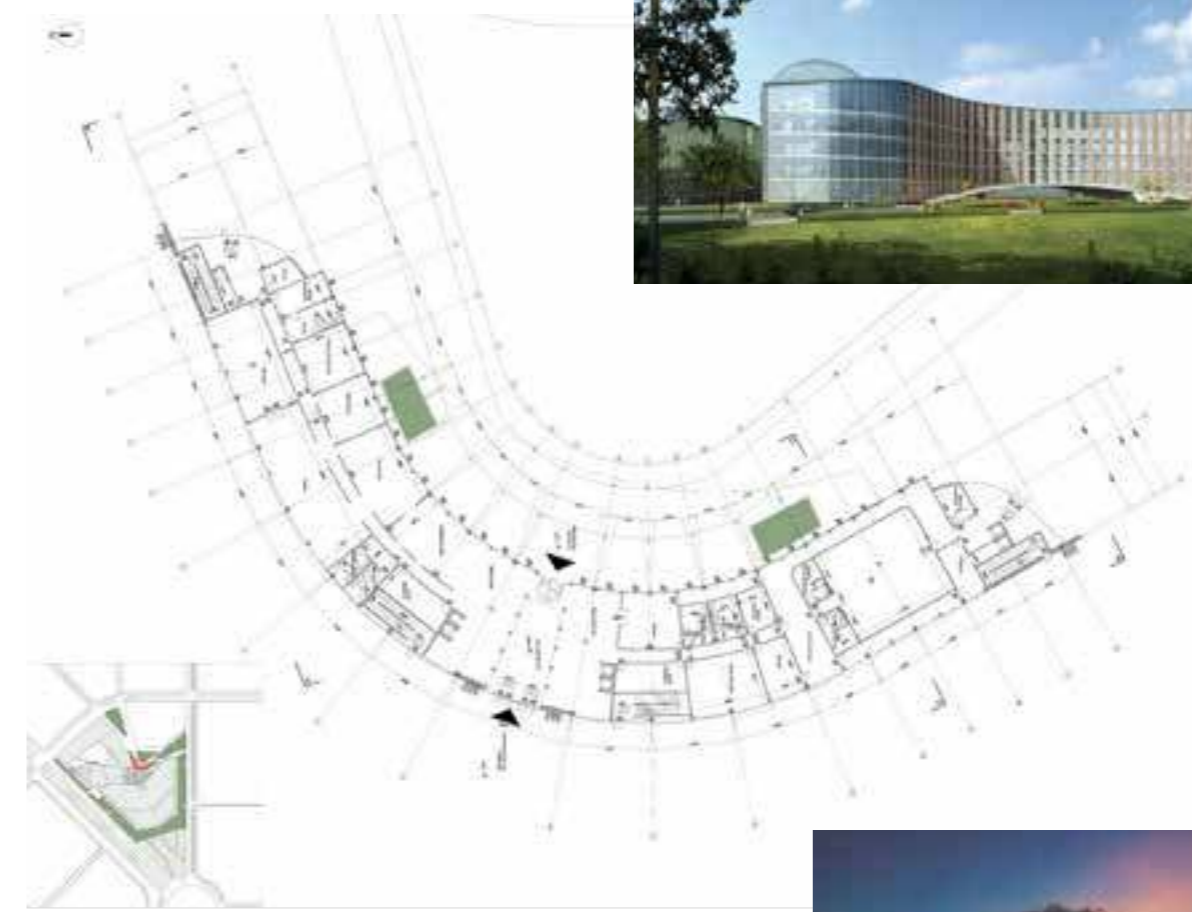


ELEVATION CC



SECTION AA

HOTEL DETAILS



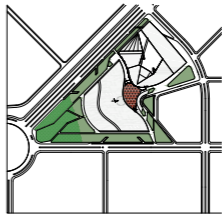
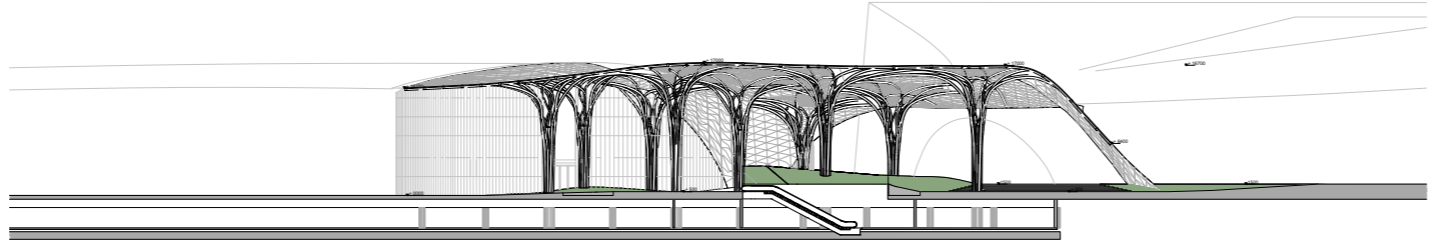
ELEVATION AA

SECTION BB

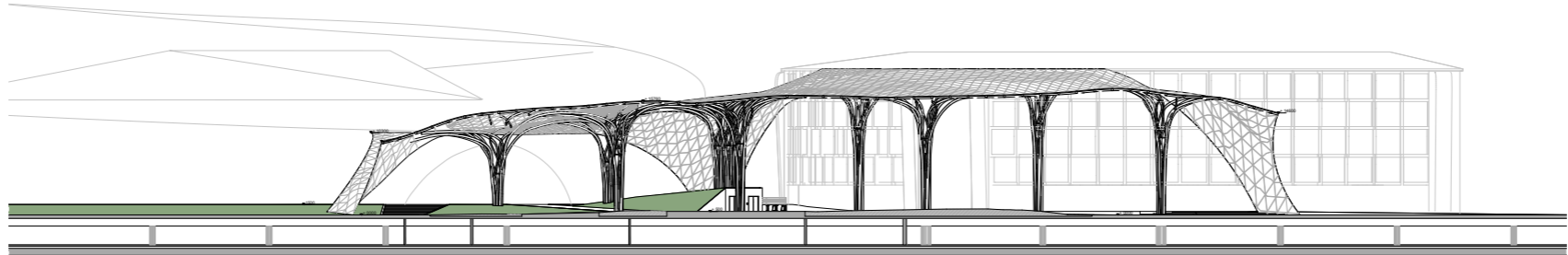
SECTION CC

MATERIALS	
1	Aluminum Composite Panel (ACP)
2	Glass
3	Steel
4	Concrete
5	Insulation
6	Paint
7	Lighting
8	Acoustic Panel
9	Handrail
10	Door
11	Window Frame
12	Roofing
13	Cladding
14	Structural Steel
15	Foundation

SQUARE COVER



SECTION A:A'



SECTION B:B'

