



Project :LandScape Disign 3  
Instructor:Dr shahrouz tehrani  
mobin bahadorani



# Eden park & Hyde park London

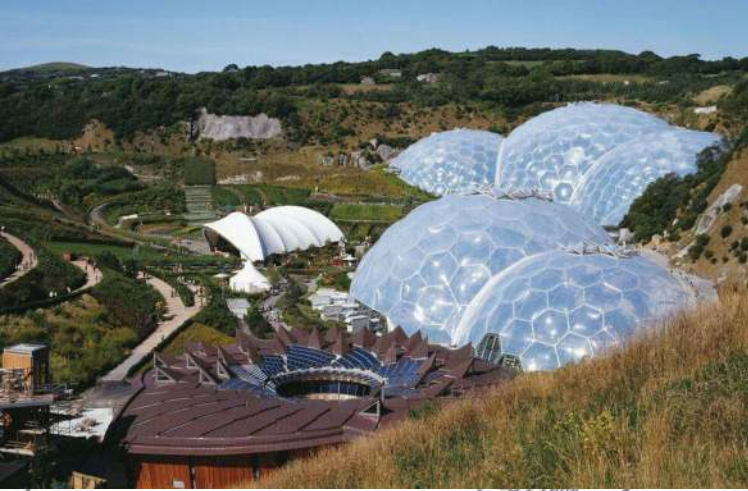
Project :LandScape Disign 3  
Instructor:Dr shahrouz tehrani  
mobin bahadorani

---

# Eden park





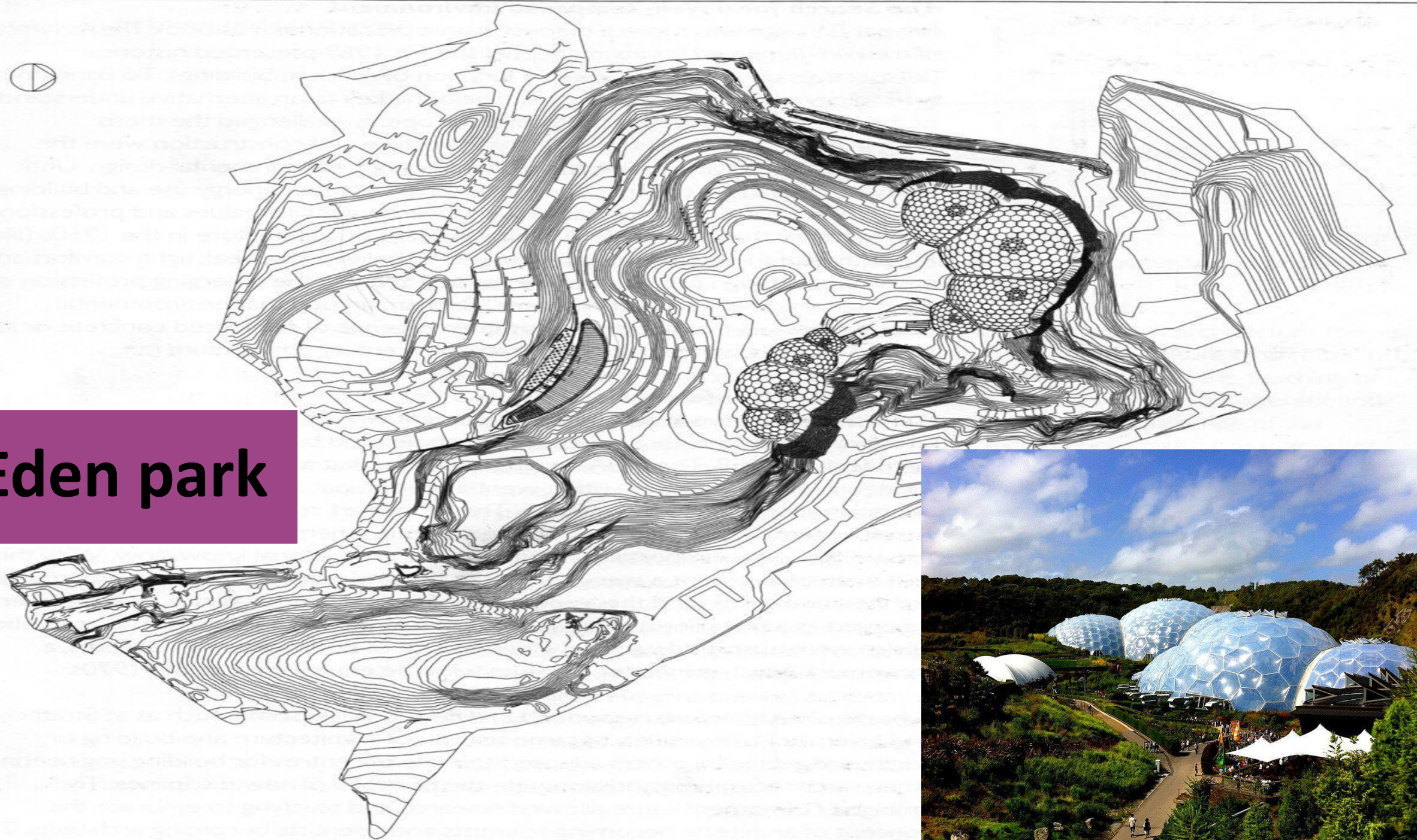


**Eden park**

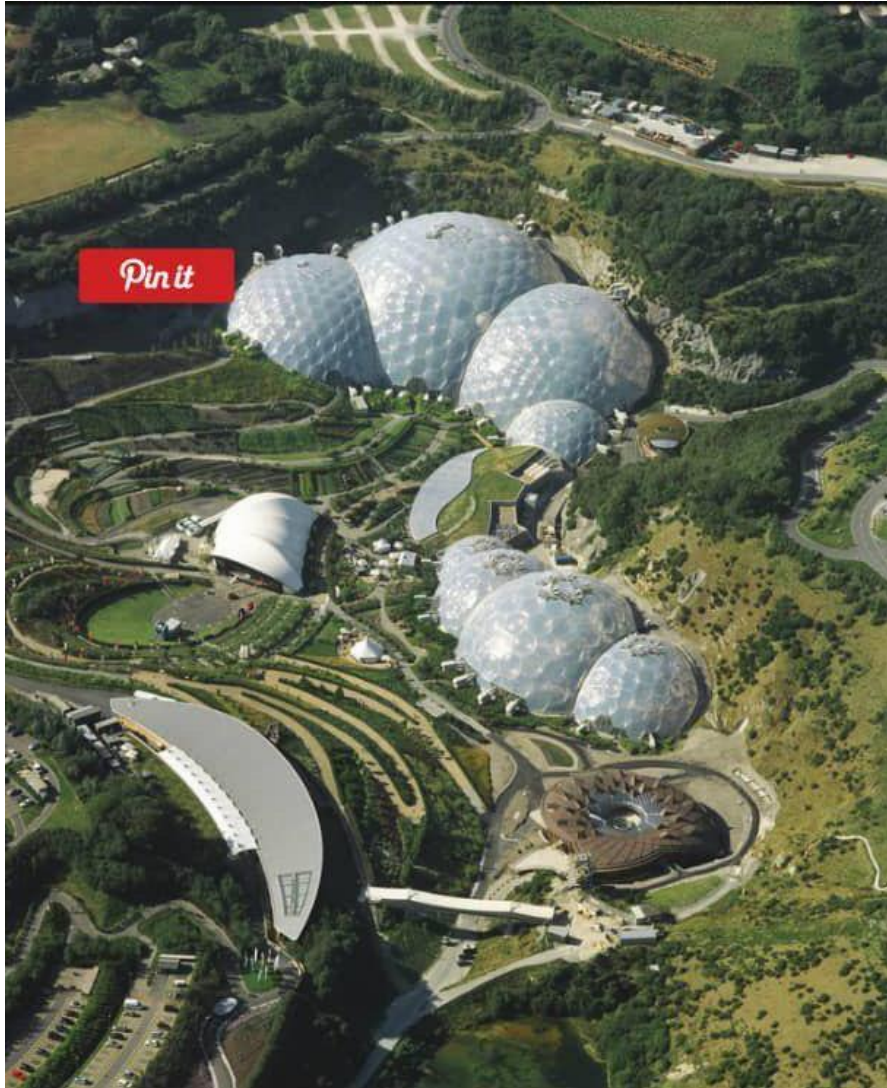




# Eden park







## Project description

Designing the biomes was an exercise in efficiency, both of space and material. Structurally, each dome is a hex-tri-hex space frame reliant on two layers.

The efficiency of the frame relies on the components of the geometric shapes: steel tubes and joints that are light, relatively small and easily transportable.

The cladding panels are triple-layered pillows of high performance ETFE foil and environmentally efficient, with maximum surface area and minimum perimeter detailing.

The biomes received almost two million visitors in their first year of opening, and the project is now one of the top three charging attractions in the UK and the second most visited destination outside London.

The Eden Project has become world famous for its stunning structure and the wonder of its contents. It is making a huge contribution to the economy of Cornwall...It is without doubt one of our national treasures.

The Rt Hon Tessa Jowell MP, Chair of the Millennium Commission and former Secretary of State for Culture, Media and Sport







Their enormous clear-span structures were built on unstable ground against crumbling cliffs, yet provide stable, sustainable and eye-catching architecture. The original 'funnel' structure for the biomes was superseded by 'bubbles' that were easily adaptable to the shifting ground beneath them.

[IT]

E' dell'architetto britannico Nicholas Grimshaw il progetto del centro di ricerca più grande del mondo sugli habitat d'acqua dolce, nonché uno degli esempi più significativi di recupero ambientale.





Sir Nicholas Grimshaw | Ander  
McIntyre

Sir Nicholas Grimshaw

---

GRIMSHAW

Grimshaw Architects  
Architecture Firm  
London / United Kingdom



## Info

Sir Nicholas Grimshaw graduated with Honours from the Architectural Association in 1965. He immediately started his own practice and won many architectural awards for his buildings in the 1960s and 1970s. These buildings were noted for their innovative approach to construction and detailing. In 1980 Nicholas Grimshaw and Partners Ltd was formed continuing this tradition, winning much acclaim and over 100 awards for architecture and civic design. The practice is now recognised as GRIMSHAW ARCHITECTS LLP and operates internationally with offices in London, New York, Melbourne and Sydney. Sir Nicholas has lectured in 23 countries worldwide. Previously he has given his lecture entitled 'Embedded Intelligence' in New York, Mexico City and Monterrey. He is a registered architect in England, France, Germany and Spain. Following examination in 2002 he is also registered to practice architecture in the State of New York.



## Project details

Year	2018
Work finished in	2018
Status	Current works
Type	Parks, Public Gardens / Theme Parks, Zoos / Pavilions / Leisure Centres

## Project description

Covering 420 hectares, the Oman Botanic Garden will be the largest of its kind in the Arabian Peninsula and one of the largest in the world. The garden will conserve and celebrate Oman's botanic diversity within two biomes and surrounding external habitats, containing the country's most endangered and endemic flora.

Located at the foot of the Al Hajar Mountains, the site itself is one of only a handful of locations in the world where the ancient sea bed is visible, sitting 100 metres above sea level. The garden will also be home to a visitor centre and educational and research facilities, nestled within the natural ravines and ridges that traverse the site minimising disturbance to the existing terrain.





The entire flora of the Sultanate of Oman can be experienced as visitors make their way through the gardens. The eight defined habitats of the country are sensitively arranged at the centre of the site, bound by Jebel Sufra and the majestic Qurn Mubarak.

Oman's wadis, mountains and deserts are represented in an immersive landscape setting, displaying only native species, many of which cannot be found anywhere else in the world. The most sensitive of Oman's habitats are enclosed within the two biomes, which mimic the species' natural habitat.

Passive and active shading, UV light controls, cooling and plant irrigation are integrated throughout the gardens. Building form, shape and materials have been considered and selected in response to atmospheric conditions and the natural topography.

Sunlight, weather patterns and human behaviour have informed the garden's design and ensure the continued preservation of the country's huge variety of flora.

Engineer





Pin it







Pin it



Full



# Hyde park London





نقشه شهر لندن و نقطه جای گذاری  
**Hyde park London**











THE  
LANCASTER  
COLLECTION

PADDINGTON

MARBLE  
ARCH

OXFORD ST  
BOND STREET  
NEW BOND STREET

LANCASTER  
GATE

KNIGHTS-  
BRIDGE

ROUND  
POND

SERPENTINE

Kensington  
Palace

Albert  
Memorial

Royal  
Albert  
Hall

Victoria and  
Albert  
Museum

Harrods

HIGH STREET  
KENSINGTON

Natural  
History  
Museum

SOUTH KENSINGTON

Michelin  
House and  
the Conran  
Shop







هاید پارک لندن یک پارک عمومی است که در منطقه مینستر لندن قرار دارد. هاید پارک لندن چهارمین پارک بزرگ دنیاست. هاید پارک لندن در بیش از ۳۵۰ قطعه زمین پراکنده شده است و جاهای معروفی مثل اسپیکر کرنر، دریاچه سر پنتین و آبنمای یادبود دیانا، پرنسس ولز که یکی از جاذبه های گردشگری لندن در سالهای گذشته بوده است، در آن قرار دارد.



تئاتر هاید پارک تبدیل به یکی از مکان های تئاتری پرفروغ جامعه شهری لندن شده است. هر ژانویه و فوریه تئاتر هاید پارک با جشن های محیطی سال نو و فستیوال های پیشواز به استقبال سال نو می رود، این جشن ها در قسمت جنوب شرقی پارک برپا می شوند.







**هاید پارک لندن** محلی برای توقف پرندگان هم می باشد. در بین آنها، غازها و دیگر جانوران بالدار را مشاهده خواهید کرد که در نزدیکی دریاچه سرپنتین تمام طول روز باعث هیجان زده شدن کل خانواده خواهند شد. کودکان از ارزیابی و بررسی گل ها در باغ رز مجاور محل اقامتشان، بازی کردن اطراف مجسمه پیترپن و یا آب بازی در سرچشمه، لذت خواهند برد. می توانید خانواده را با بررسی مسیرها به



به قدم زدن در میان درختان ببرید، یا دیدن گل های آماده برای کوزه گری و ساخت صنایع دستی را امتحان کنید و یا قدم زنان به گردش پرداخته شود.

هاید پارک، پارک گوزن ها هم هست و دارای زمین دوی (دویدن) خصوصی است که فقط مقامات حکومتی و سلطنتی اجازه دویدن در آن را دارند.



در این میان نیز مسیرهایی برای پیاده روی، ورزش و سوارکاری وجود دارد. زمین های گلف، تنیس، شنا و مجسمه ها از دیگر امکانات پارک است.

امکان قایق سواری در مسیرهای رودخانه نیز وجود دارد.

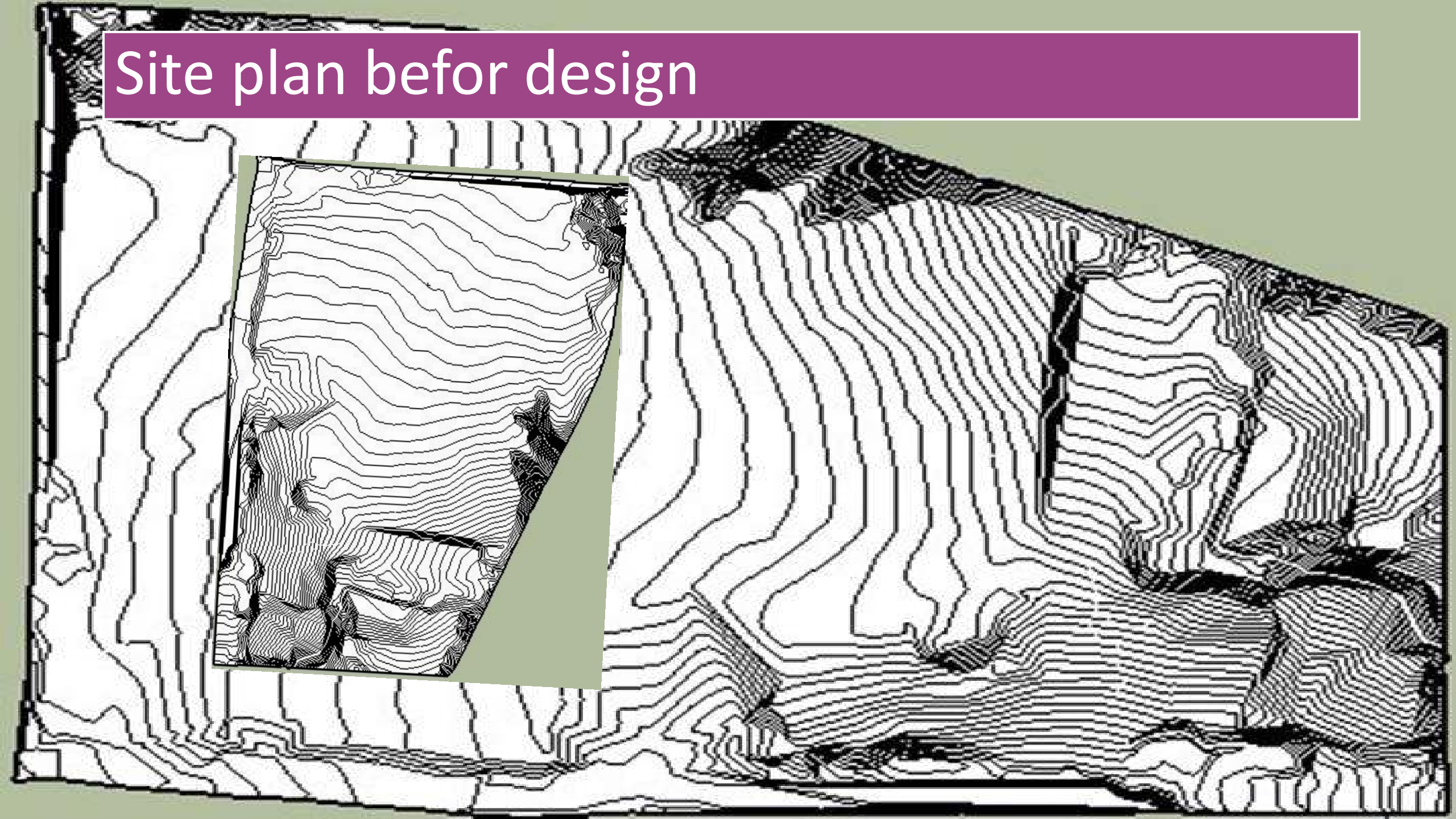
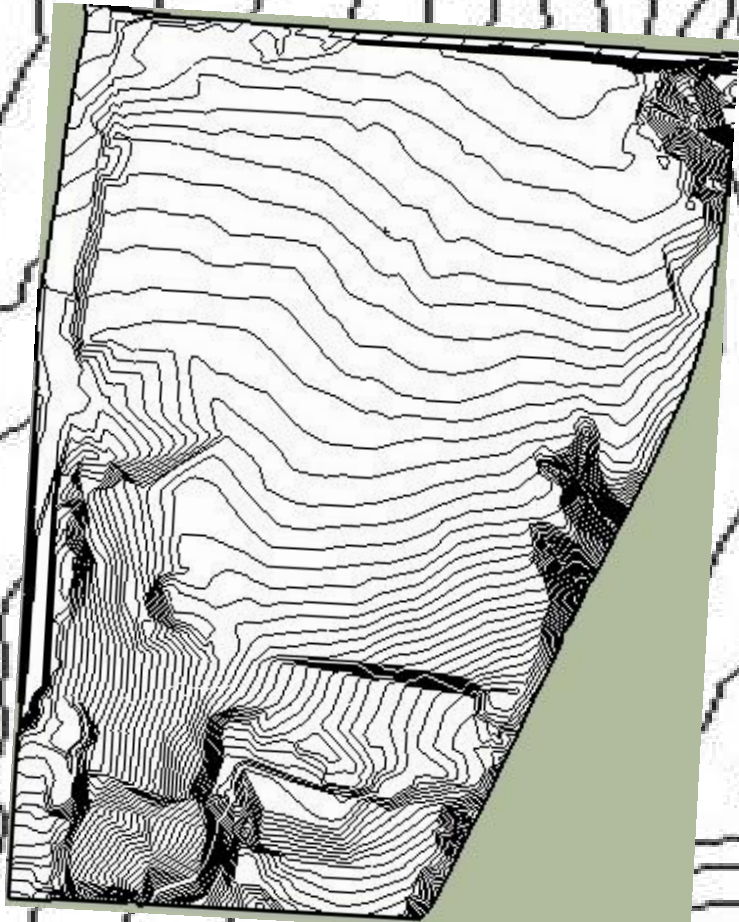


# Design of the university of pardis site

**Project :LandScape Disign 3**  
**Instructor:Dr shahrouz tehrani**  
**mobin bahadorani**



# Site plan befor design



The concept :

Continuity in movement

and

Organic gardens based on topography

Project :LandScape Disign 3

Instructor:Dr shahrouz tehrani

mobin bahadorani



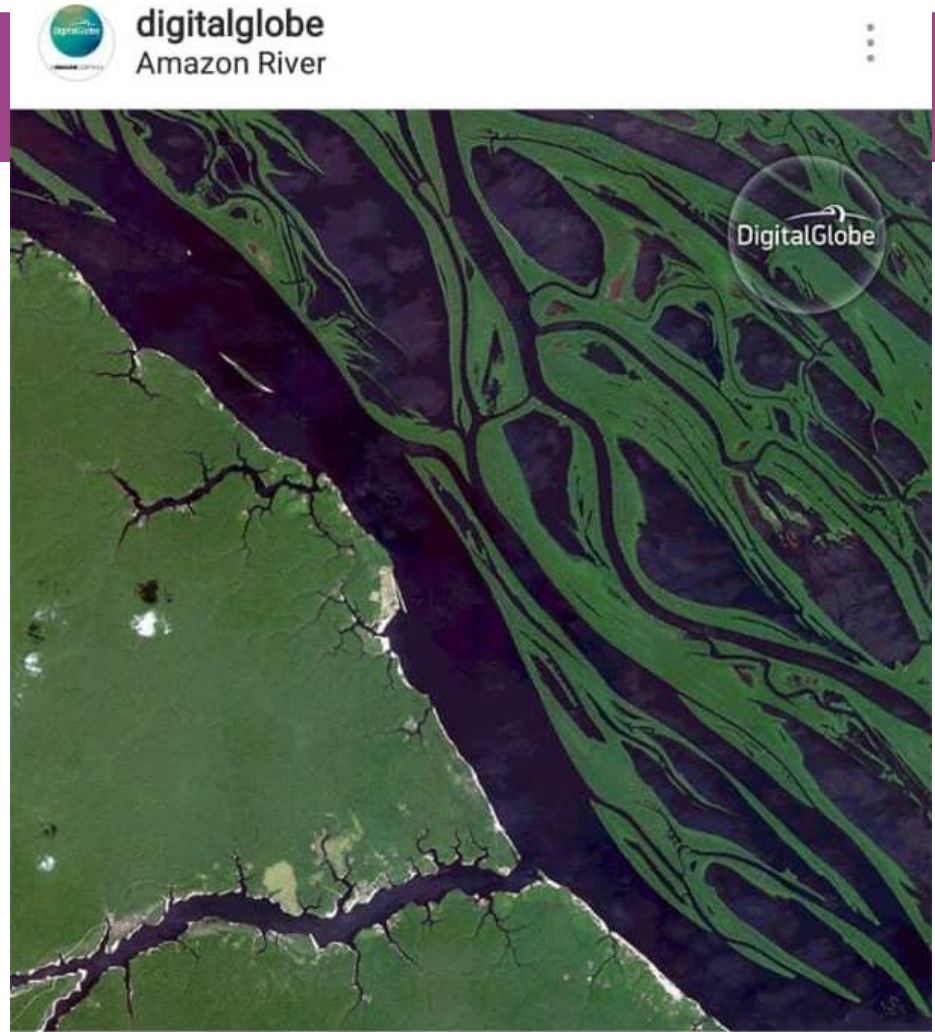


# Design Process

Project :LandScape Disign 3  
Instructor:Dr shahrouz tehrani  
mobin bahadorani

---

# Deconstruction Pattern



1,048 likes

digitalglobe For this week's Insta-trip, we're visiting unique places around #Brazil! The Amazon River is





# First sketch

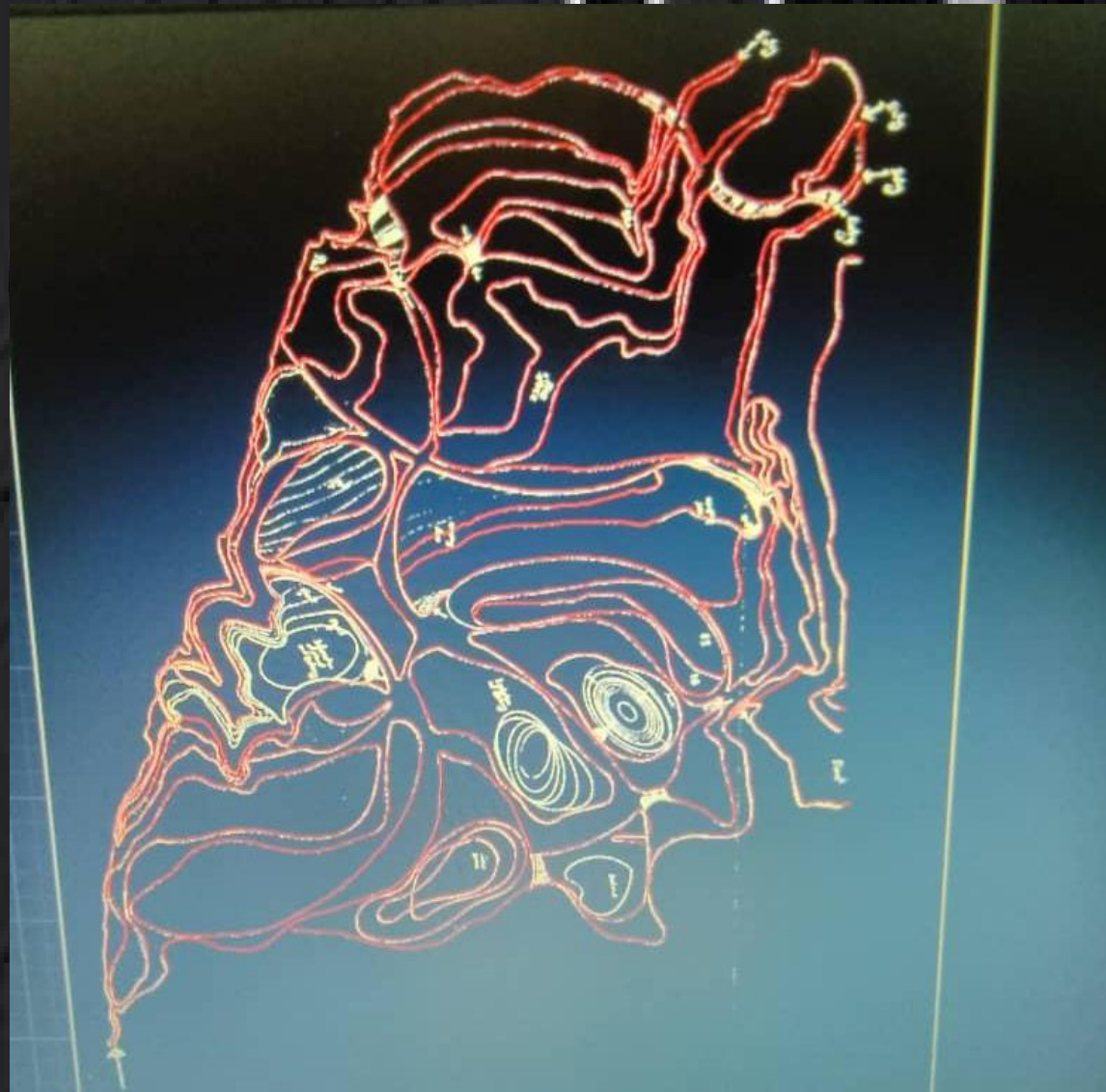




# Design Process

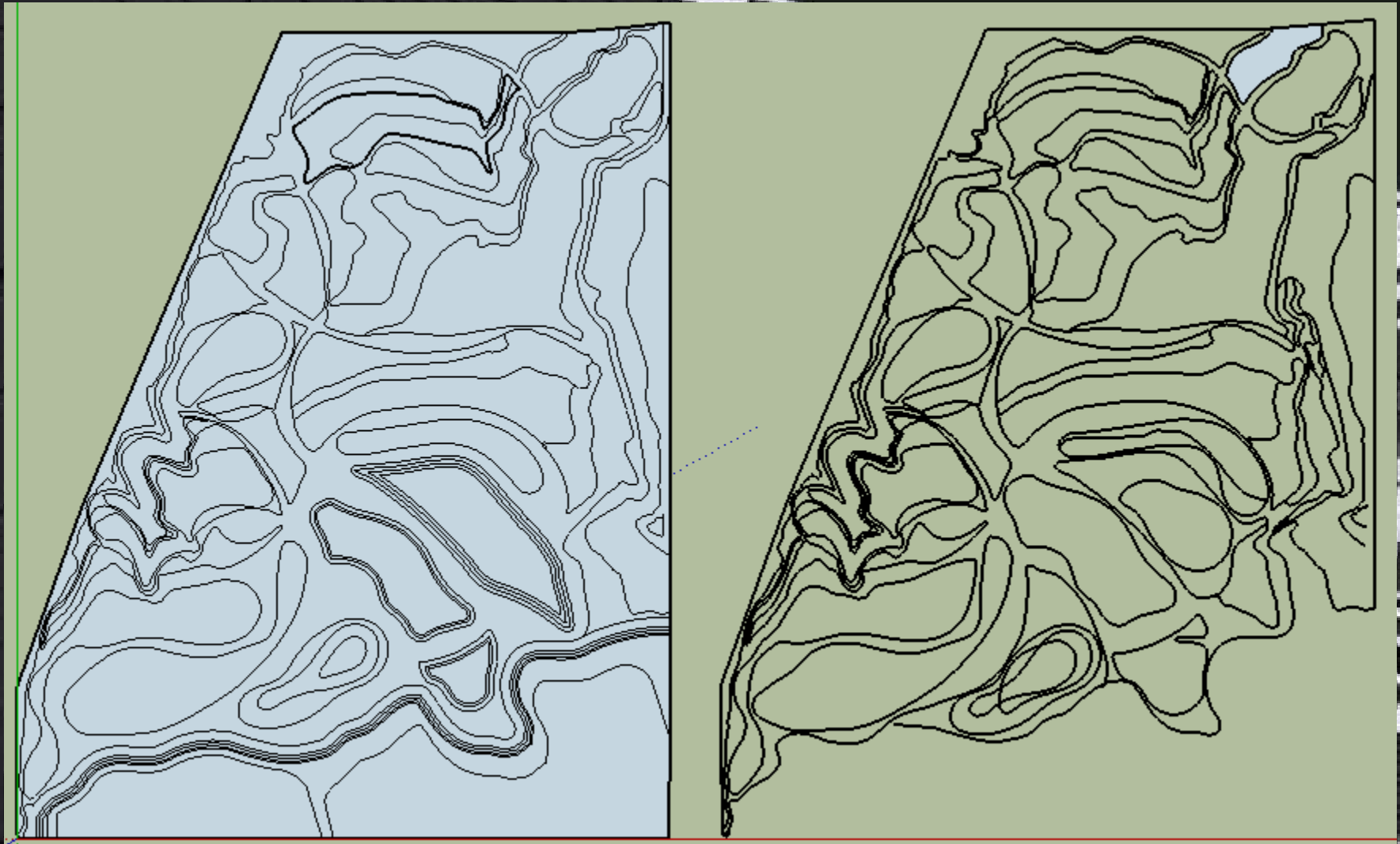


# Computer design Process

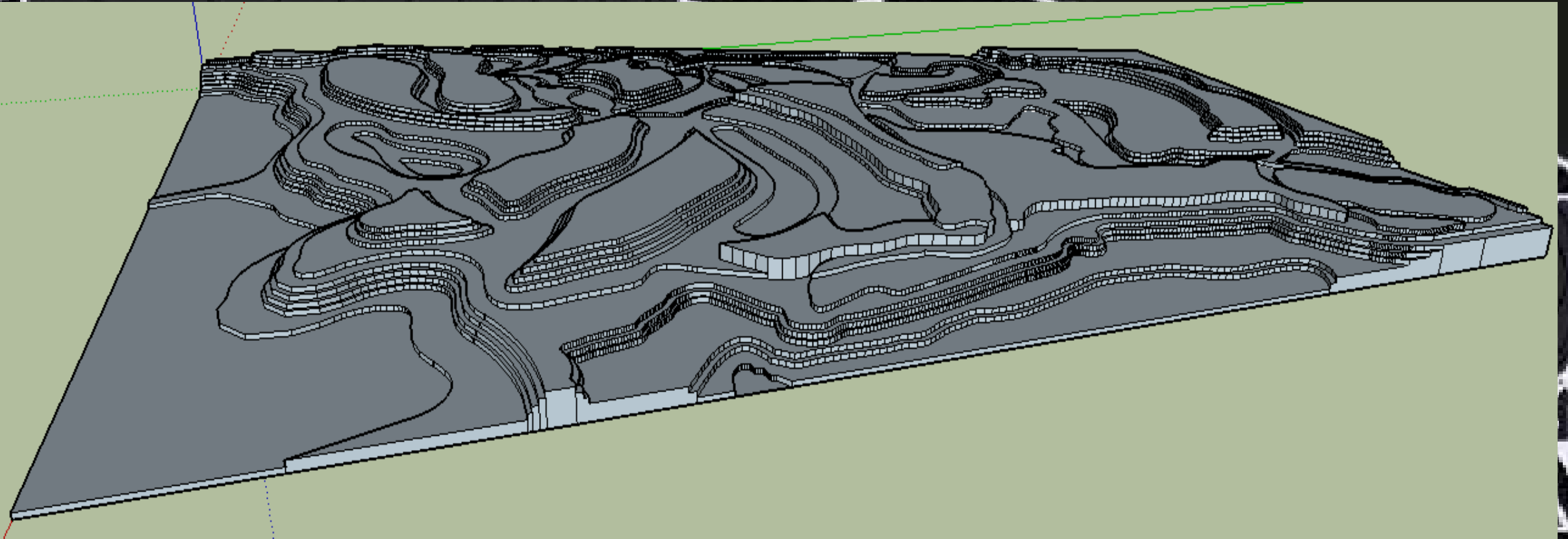




# Design Process



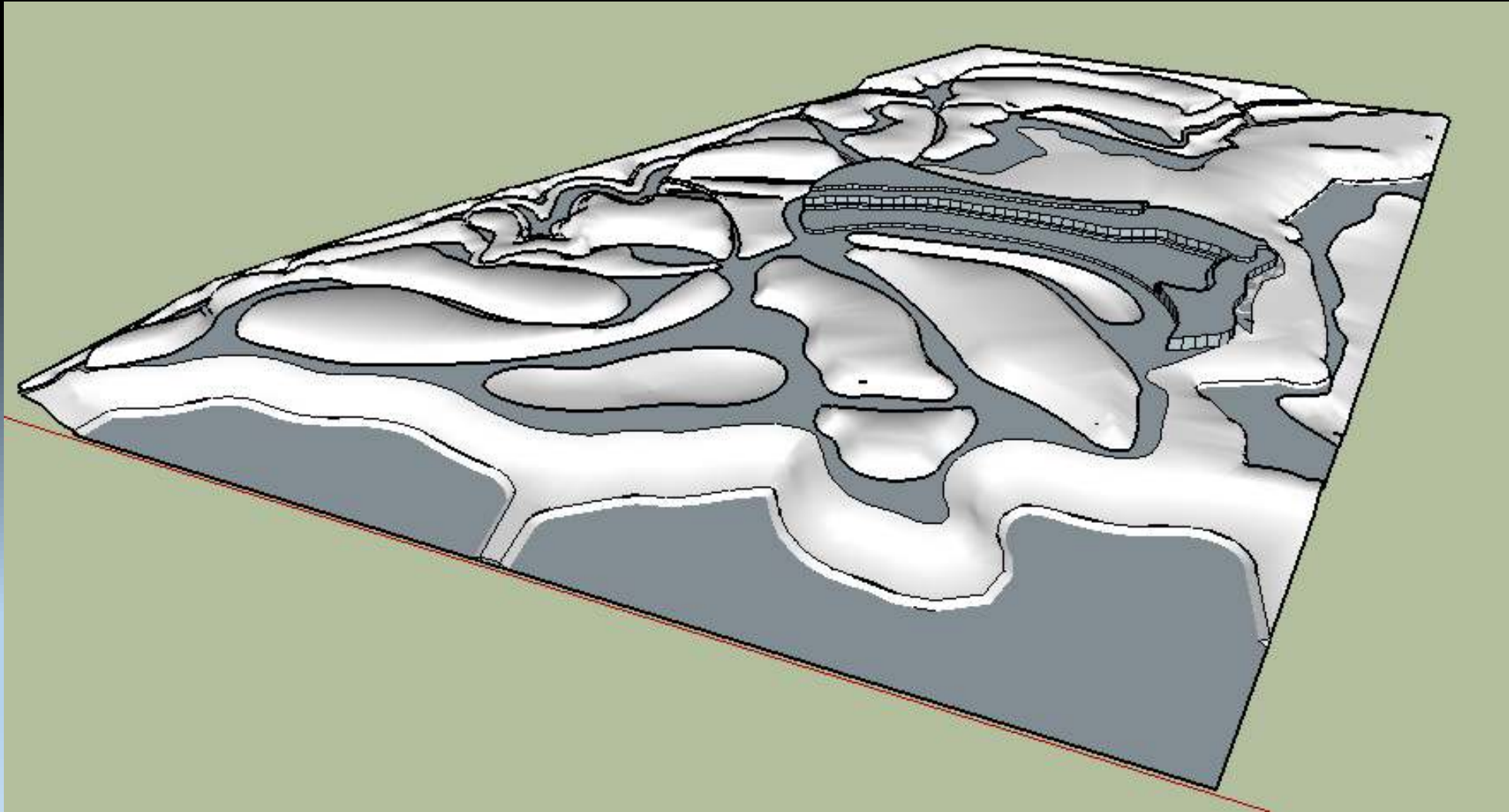
# Design Process



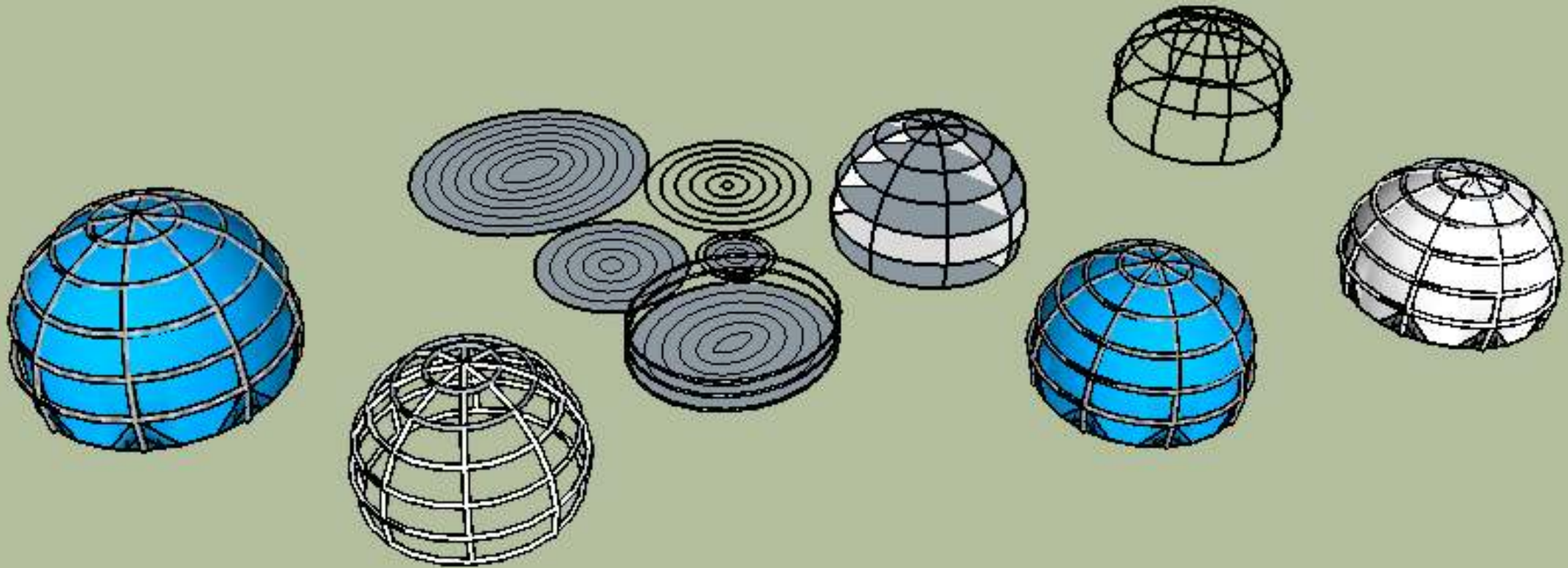


# Design Process

## First loft plan



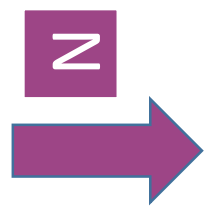
# Design Process





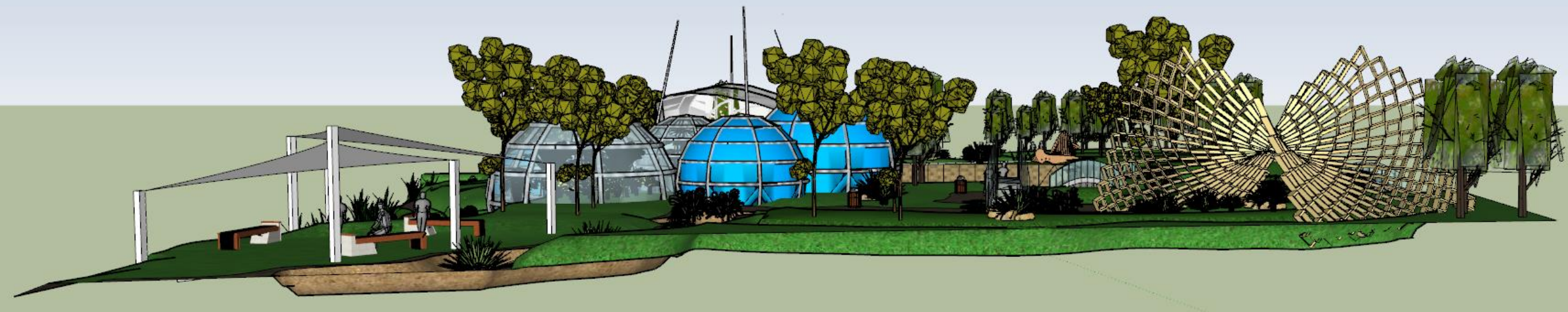
Site Plan and Placement of buildings and spaces

Plants Planting Plan

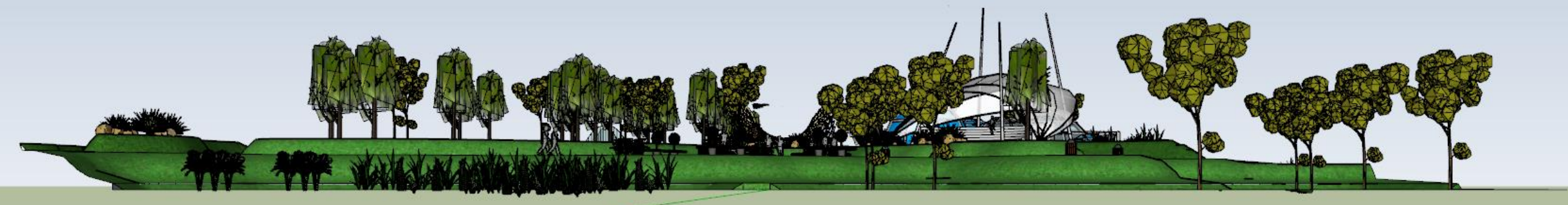




North view

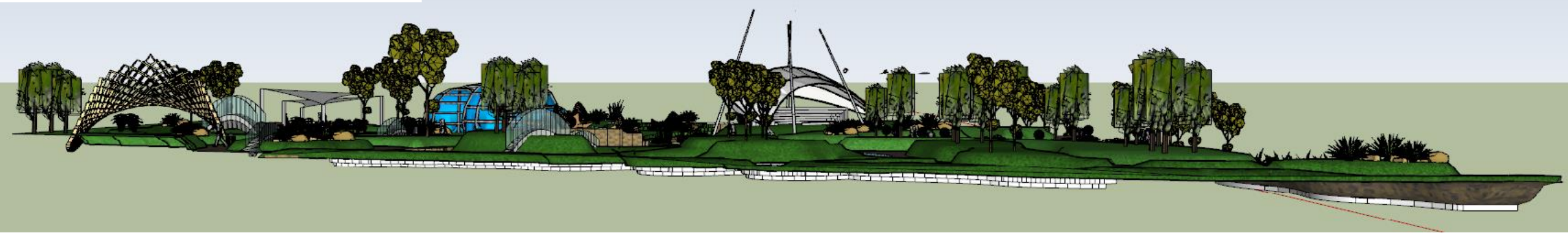


southern view

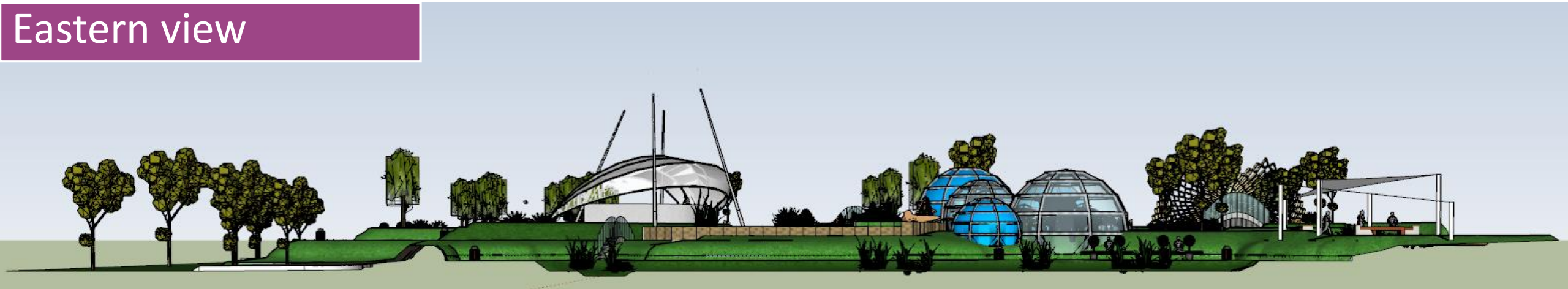




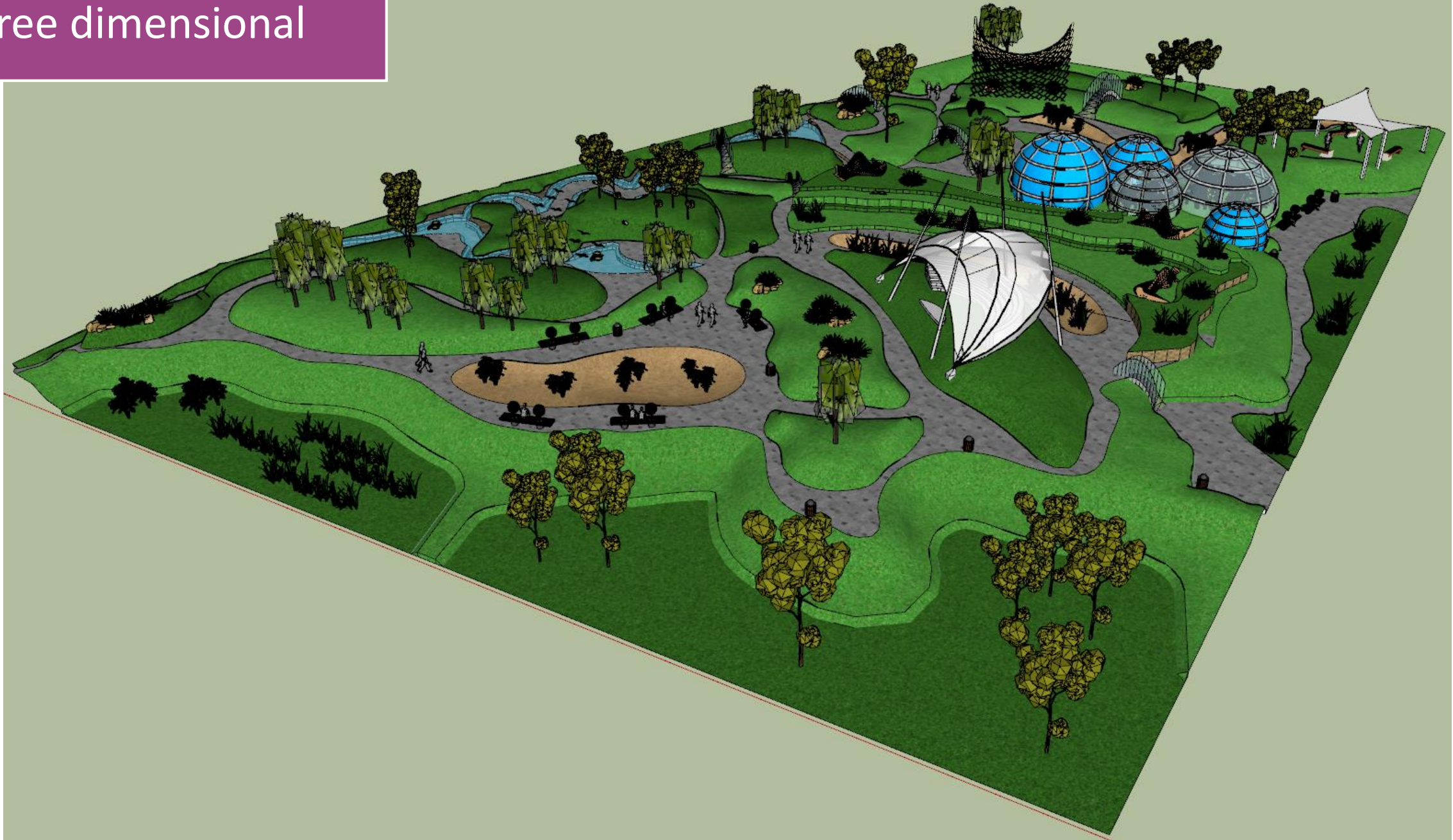
Western view



Eastern view



# Three dimensional







Three dimensional



Three dimensional



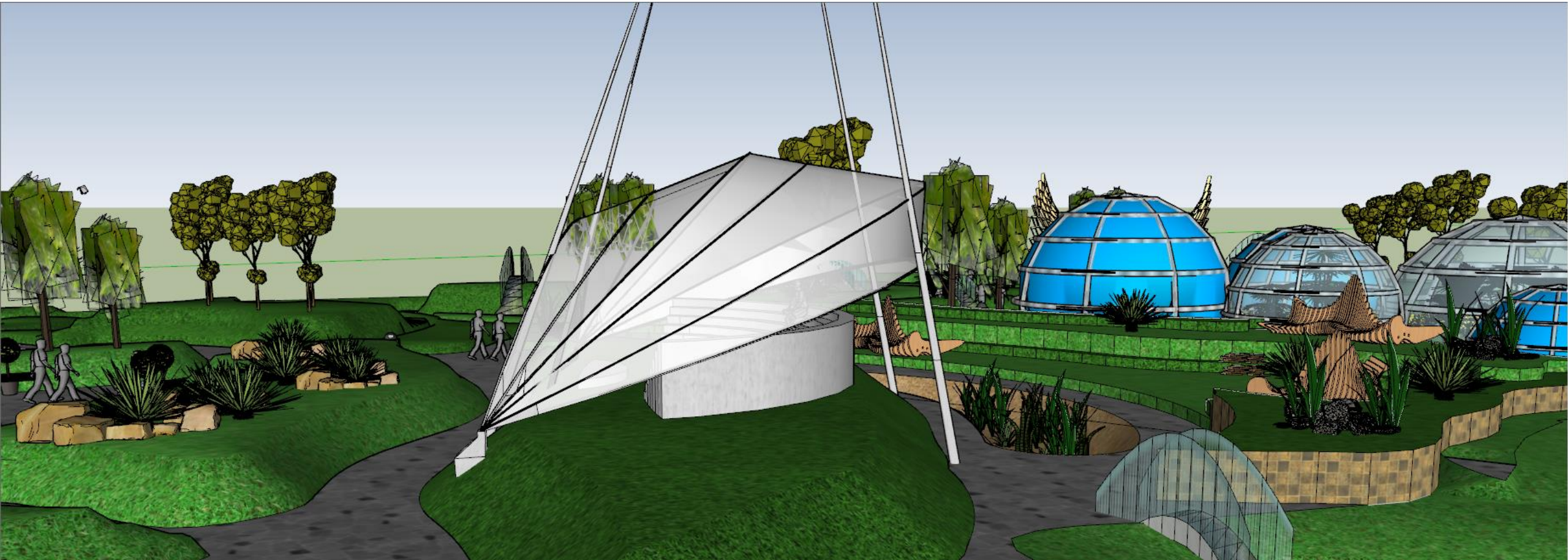


# Three dimensional



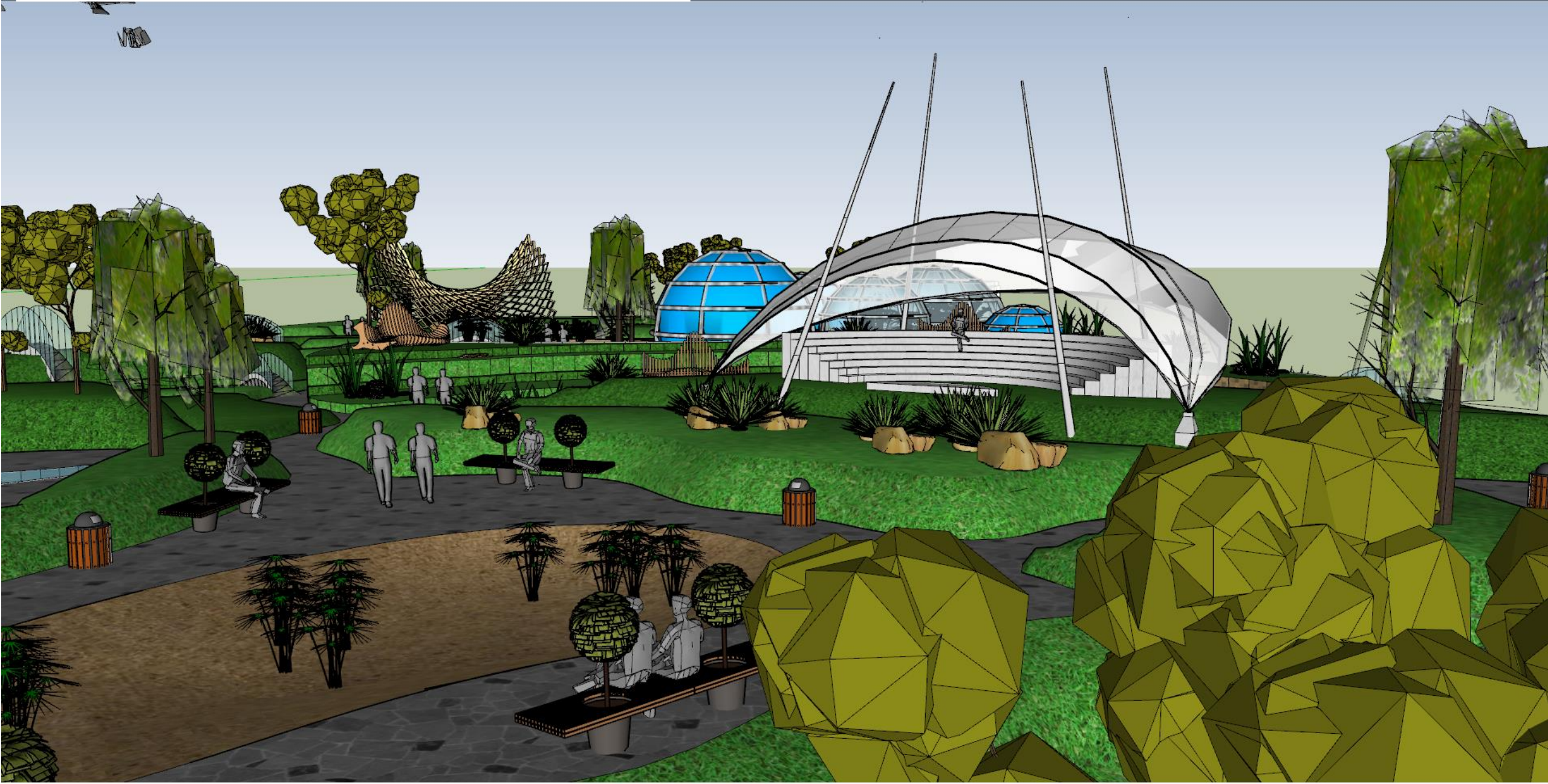


# Amphitheater





# Amphitheater





# Camping





# Camping





# Glass Conservatory



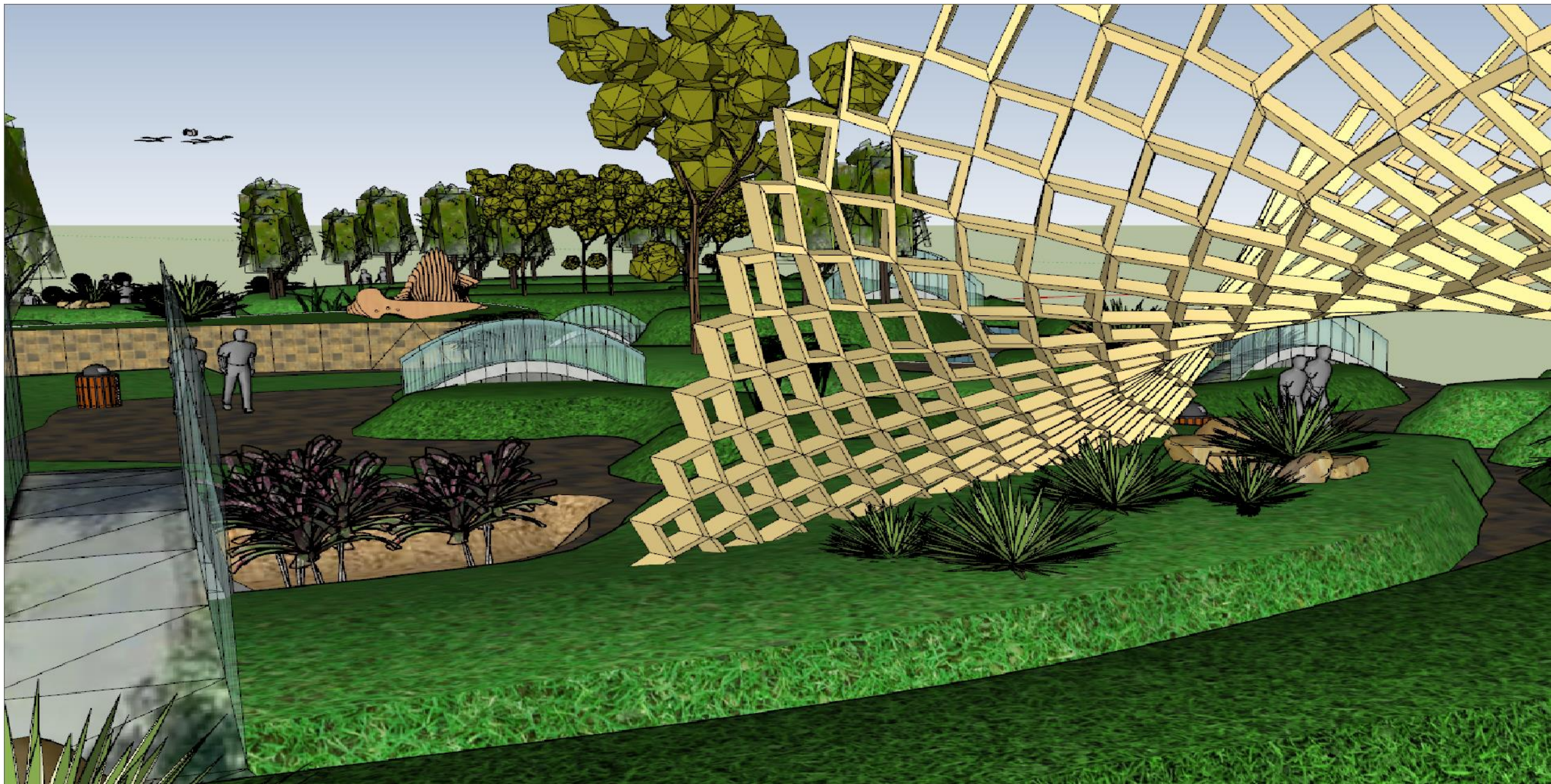


# Three dimensional



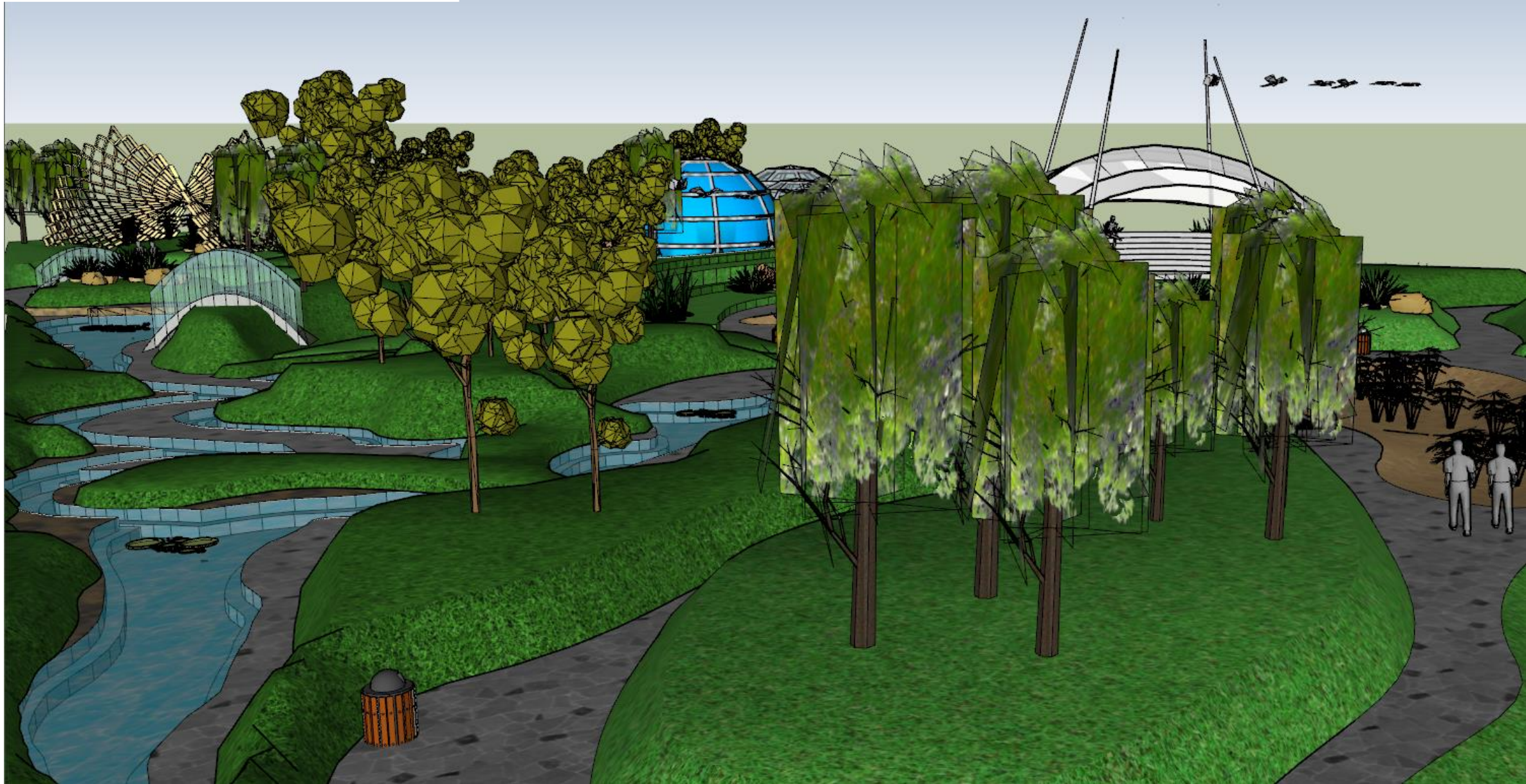


# Three dimensional



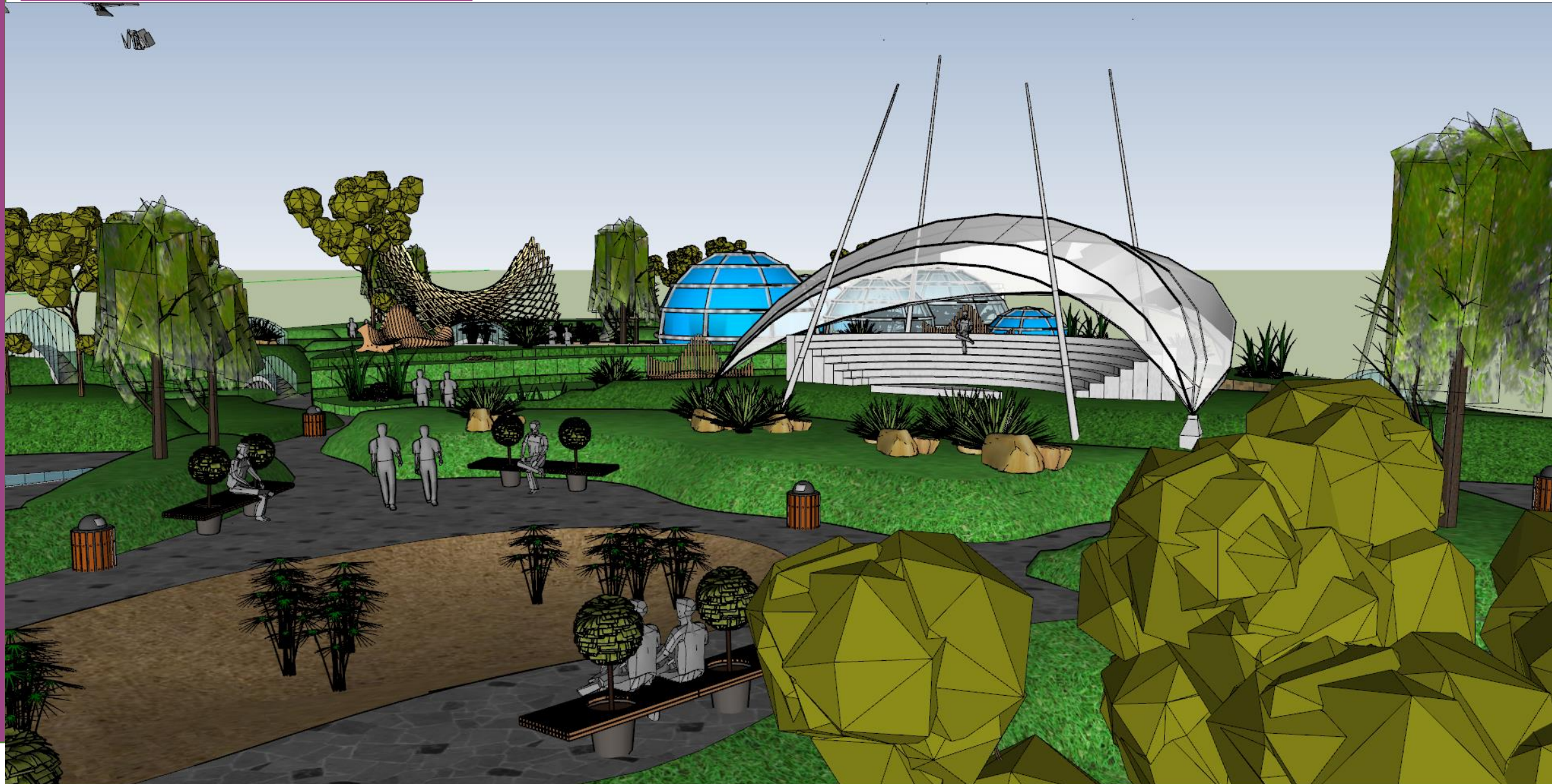


# Three dimensional





# Three dimensional



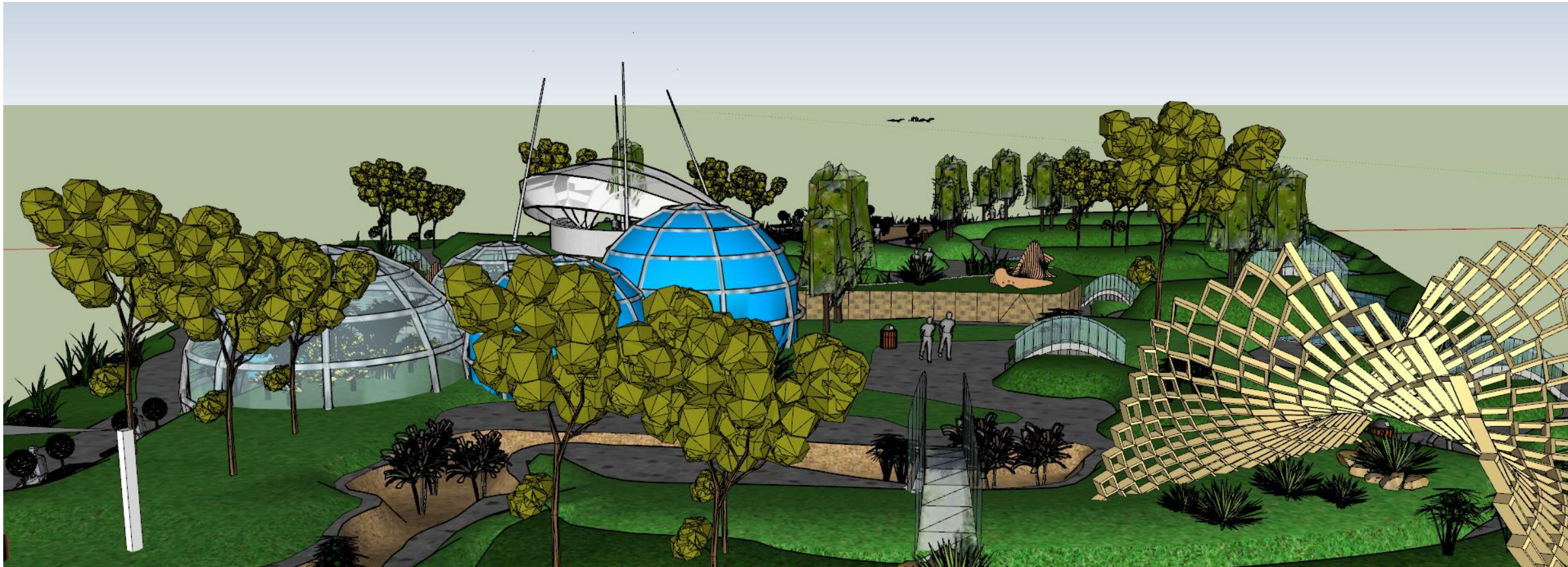


Three dimensional





# Three dimensional



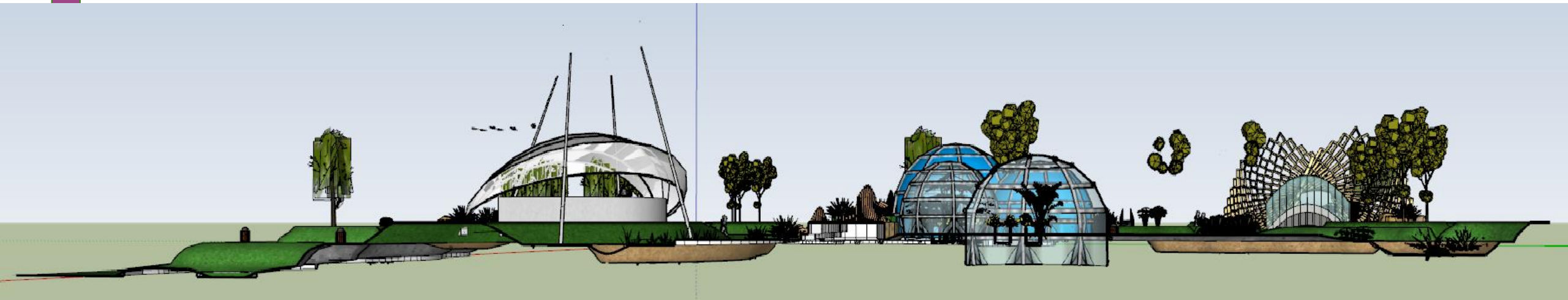


# Longitudinal Sections



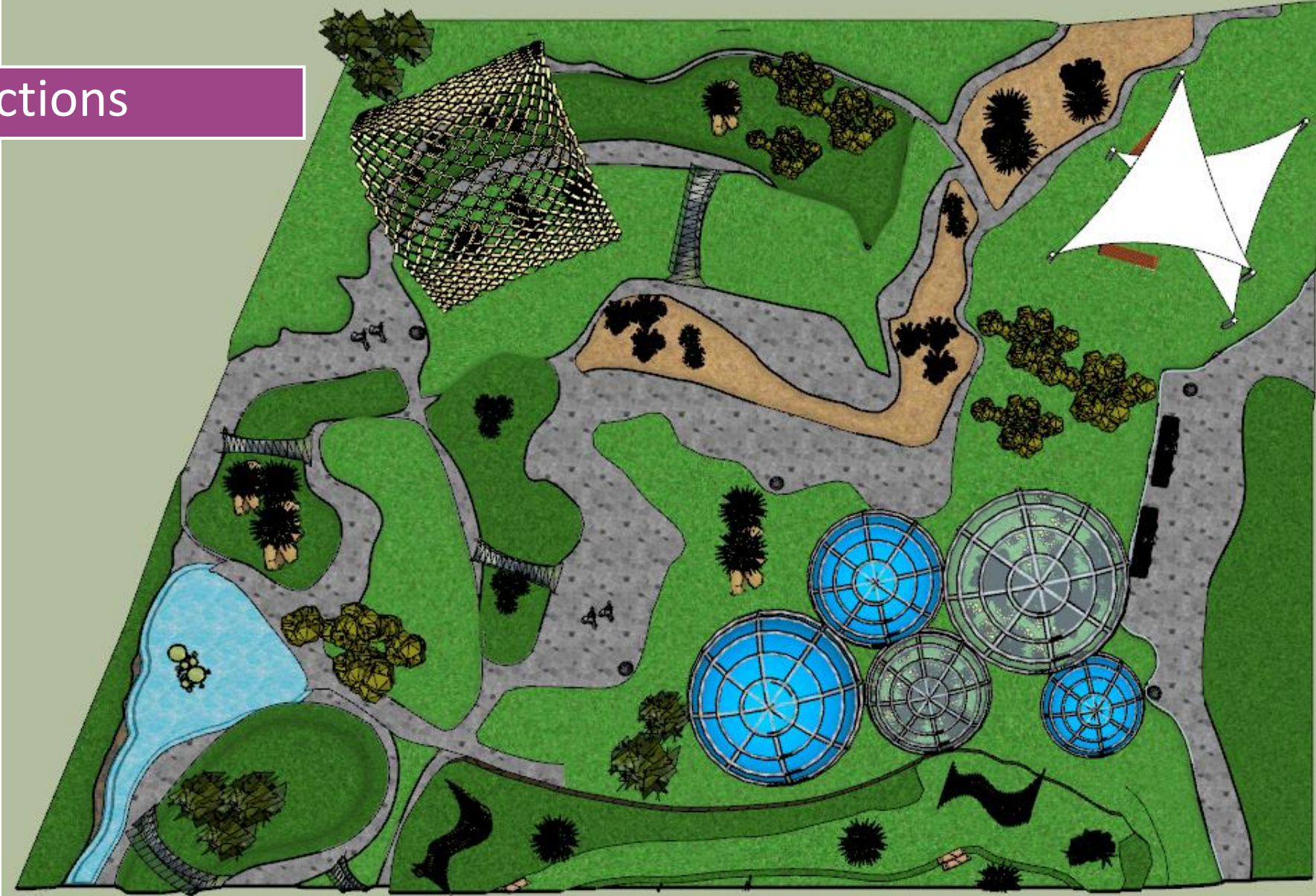


# Longitudinal Sections



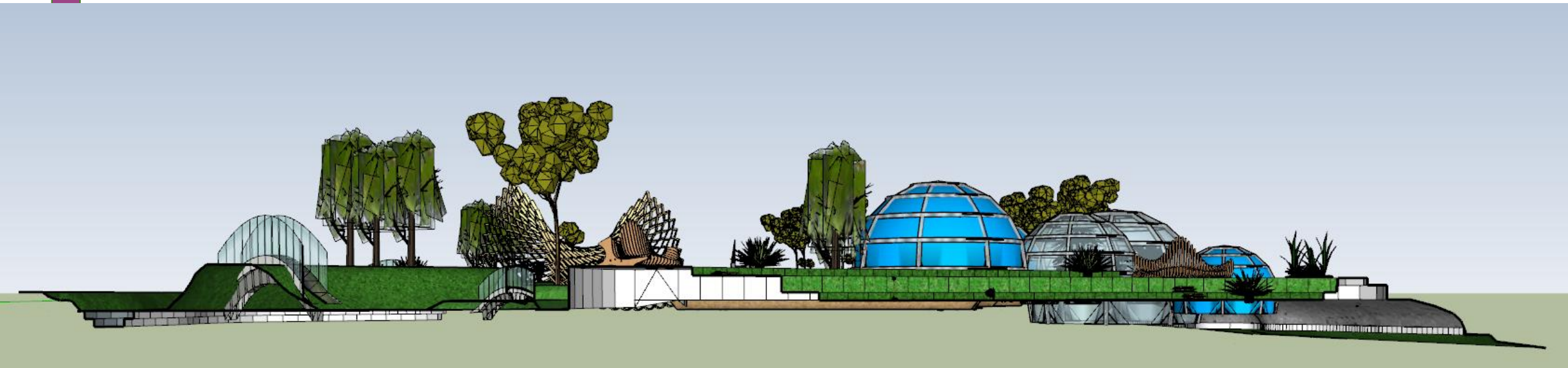


# Cross Sections





# Cross Sections





## به نام یگانه معمار طبیعت

سلام و عرض ادب و احترام خدمت استاد دانا و توانا جناب آقای دکتر ایرج شهروزتهرانی  
آقای دکتر فهم منظر در فهم توپوگرافی زمین بود و ما به درک این مطلب توسط آموزه های شما رسیدیم و  
این موفقیت را از شما داریم .

ضمن تشکر و قدردانی از خداوند سلامتی و شادی و موفقیت‌های هر روزه شما را خواستاریم.

مبین بهادرانی