

## Public Condenser

### Low-cost flexible university building, Paris, France

#### Main authors

**Gilles Delalex, Yves Moreau** and **Thomas Wessel-Cessieux**, architects, Muoto, Paris, France

#### Summary by the jury

The project is a public facility, situated on the new university campus of Paris-Saclay, France which aims to become a top international hub in the innovation economy. The building hosts a mix of activities including indoor and outdoor sports facilities, a restaurant, cafeteria, and various public spaces: a pedestrian square, street terraces, and parking areas for deliveries, bikes and cars. Conceived as a minimal structure using rough materials, robust and long lasting techniques, the building is organized vertically with its different activities superimposed on one another, using the roof as a panoramic playground for football and basketball games. The different areas are linked by an open staircase allowing for independent accesses. A place to live, taking the form of an urban shelf, accessible to all campus visitors, day or night.

#### Appraisal by the jury

The project's minimal deployment of architectural and technical means was considered a remarkable contribution to sustainable construction by the members of the jury. The elegant design merges economic and aesthetic considerations – a low-cost structure turning a limitation into a quality. The proposed scheme offers a robust framework that is adaptable to future needs – a form of resilient architecture, both in view of its management of resources as well as formal appearance

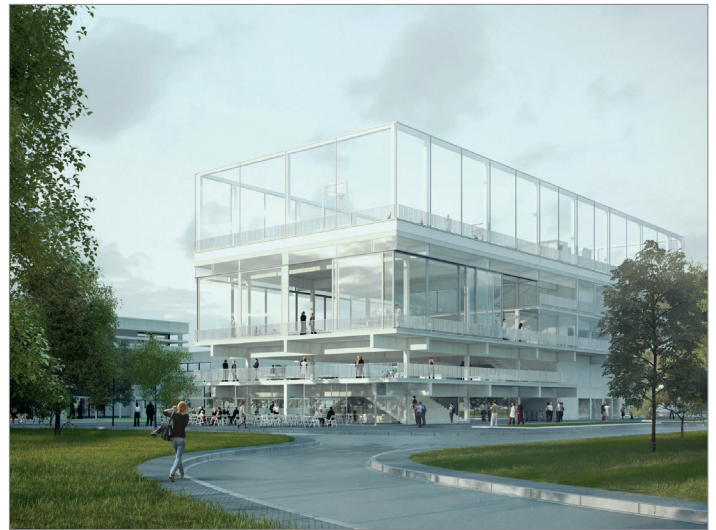


Image 1: North East façades.

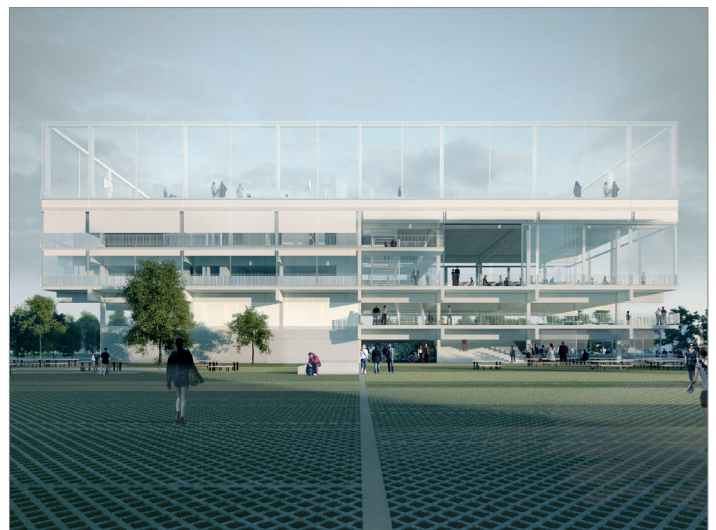


Image 2: South façade on the plaza.

#### Project data

Context	Architecture, building and civil engineering
Client	Etablissement Public Paris Saclay (EPPS)
Background	Public commission
Planned start	May 2014

#### Further authors

**Igreç Ingénierie**, Paris, France; **Bollinger + Grohmann Ingenieure**, Paris, France; **Alternative Acoustic & Lighting Consulting**, Paris, France; **Novorest Ingénierie**, Montreuil, France

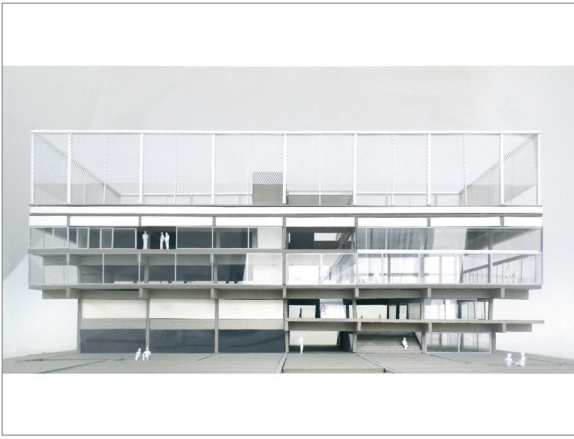


Image 3: South façade on the plaza.

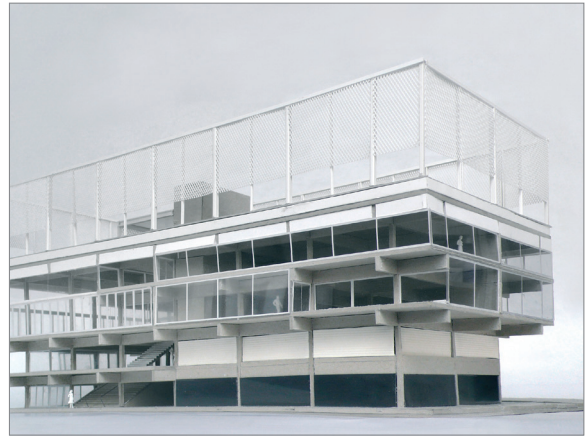


Image 4: North façade.



Image 5: East façade.



Image 6: East façade.



Image 7: Inside view of the restaurant toward the staircase.

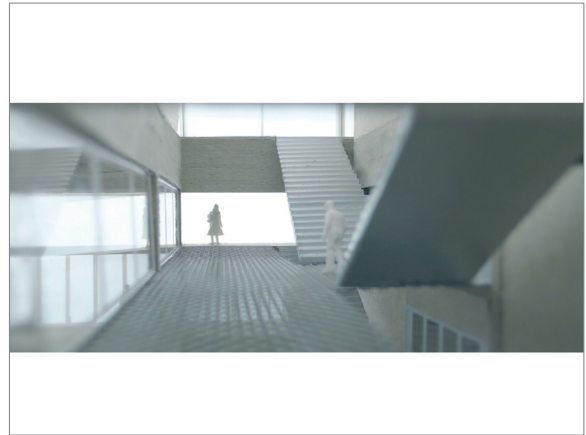


Image 8: The staircase offers a continuous public space to connect the layering of independent programs.

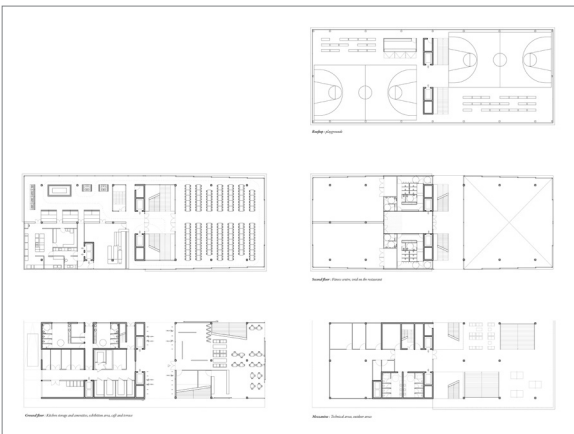


Image 9: Floor plans.

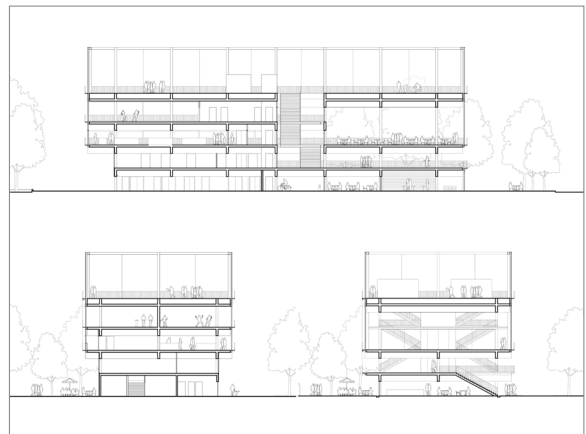


Image 10: Sections.