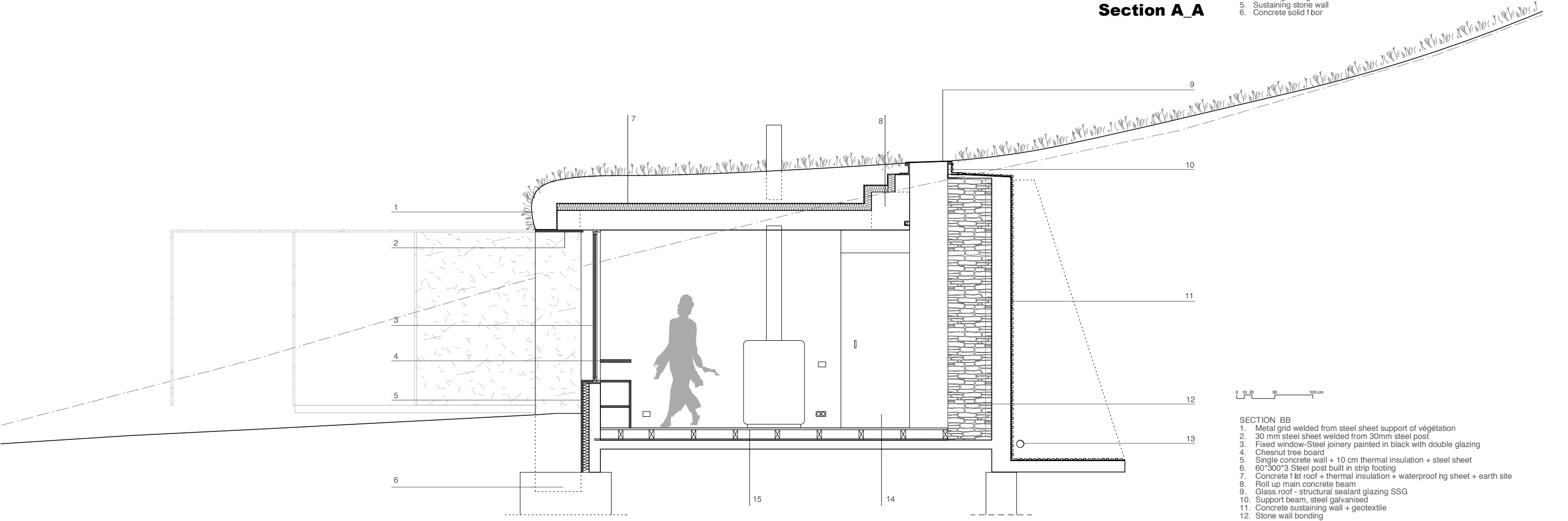


**Section A\_A**

- SECTION AA
1. Glass roof - structural sealant glazing SSG
  2. 30mm Crude steel Slab column
  3. Crude steel sheet landing door
  4. Double glazing built in stone wall
  5. Sustaining stone wall
  6. Concrete solid floor



**Section B\_B**

- SECTION BB
1. Metal grid welded from steel sheet support of végétation
  2. 30 mm steel sheet welded from 30mm steel post
  3. Fixed window-Steel joinery painted in black with double glazing
  4. Chestnut tree board
  5. Single concrete wall + 10 cm thermal insulation + steel sheet
  6. 60°300°3 Steel post built in strip footing
  7. Concrete flat roof + thermal insulation + waterproofing sheet + earth site
  8. Roll up main concrete beam
  9. Glass roof - structural sealant glazing SSG
  10. Support beam, steel galvanised
  11. Concrete sustaining wall + geotextile
  12. Stone wall bonding
  13. Drain
  14. Pivoted door 90x230 black laminate wood facing
  15. Oak floor boards + compacted fill under slab