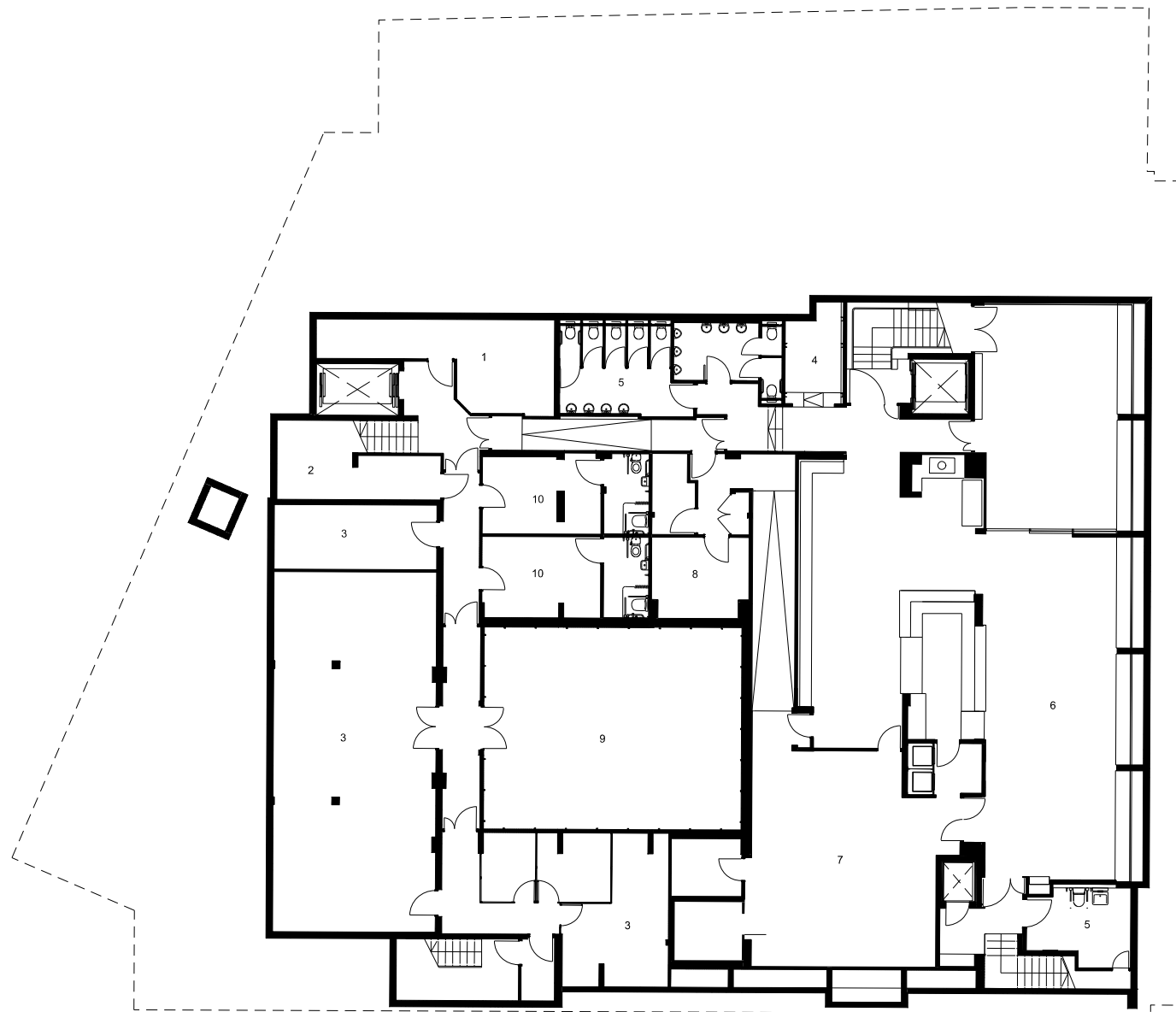


SITE PLAN
EVERYMAN THEATRE, LIVERPOOL

ANNOTATION KEY

- 1 ELECTRICAL INTAKE ROOM
- 2 RAINWATER TANK ROOM
- 3 STORE
- 4 CLOAKROOM
- 5 W.C.
- 6 BISTRO
- 7 KITCHEN
- 8 CELLAR
- 9 SUB-STAGE
- 10 STAFF CHANGING
- 11 REFUSE STORE
- 12 Y & C CHANGING
- 13 STAGE DOOR
- 14 ACTORS' QUIET ROOM
- 15 STAGE MANAGEMENT
- 16 DRESSING ROOM
- 17 STAGE KITCHEN
- 18 WORKSHOP
- 19 STAGE
- 20 YOUTH AND COMMUNITY (Y&C) STUDIO
- 21 CAFE
- 22 OFFICE
- 23 BOX OFFICE
- 24 GET-ROUND CORRIDOR
- 25 LAUNDRY
- 26 BAR
- 27 WRITERS' ROOM
- 28 FUNCTION ROOM
- 29 AUDITORIUM STALLS
- 30 GREEN ROOM
- 31 WARDROBE
- 32 REHEARSAL ROOM
- 33 SOUND RECORDING ROOM
- 34 SERVER ROOM
- 35 AUDITORIUM CIRCLE
- 36 CONTROL ROOM
- 37 TECHNICAL GALLERY
- 38 MEETING ROOM
- 39 DIMMERS & AMPS
- 40 PLANT
- 41 LIGHTING WORKSHOP
- 42 TECHNICAL GRID
- 43 EXTRACT PLENUM
- 44 FLYTOWER
- 45 AIR SUPPLY PLENUM



0 2 4 6(m)

BASEMENT
EVERYMAN THEATRE, LIVERPOOL

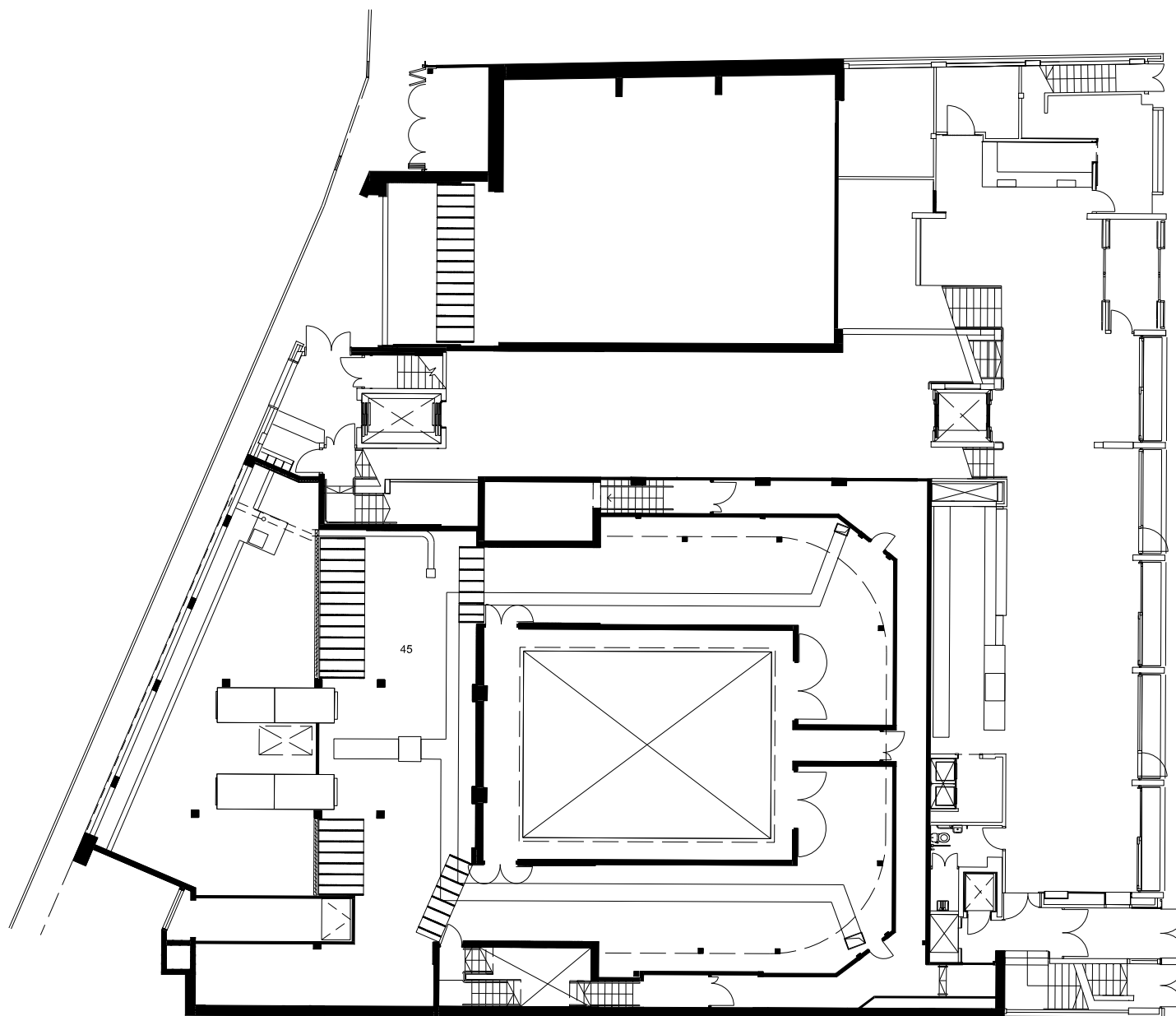
ANNOTATION KEY

- 1 ELECTRICAL INTAKE ROOM
- 2 RAINWATER TANK ROOM
- 3 STORE
- 4 CLOAKROOM
- 5 W.C.
- 6 BISTRO
- 7 KITCHEN
- 8 CELLAR
- 9 SUB-STAGE
- 10 STAFF CHANGING
- 11 REFUSE STORE
- 12 Y & C CHANGING
- 13 STAGE DOOR
- 14 ACTORS' QUIET ROOM
- 15 STAGE MANAGEMENT
- 16 DRESSING ROOM
- 17 STAGE KITCHEN
- 18 WORKSHOP
- 19 STAGE
- 20 YOUTH AND COMMUNITY (Y&C) STUDIO
- 21 CAFE
- 22 OFFICE
- 23 BOX OFFICE
- 24 GET-ROUND CORRIDOR
- 25 LAUNDRY
- 26 BAR
- 27 WRITERS' ROOM
- 28 FUNCTION ROOM
- 29 AUDITORIUM STALLS
- 30 GREEN ROOM
- 31 WARDROBE
- 32 REHEARSAL ROOM
- 33 SOUND RECORDING ROOM
- 34 SERVER ROOM
- 35 AUDITORIUM CIRCLE
- 36 CONTROL ROOM
- 37 TECHNICAL GALLERY
- 38 MEETING ROOM
- 39 DIMMERS & AMPS
- 40 PLANT
- 41 LIGHTING WORKSHOP
- 42 TECHNICAL GRID
- 43 EXTRACT PLENUM
- 44 FLYTOWER
- 45 AIR SUPPLY PLENUM



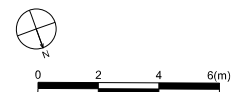
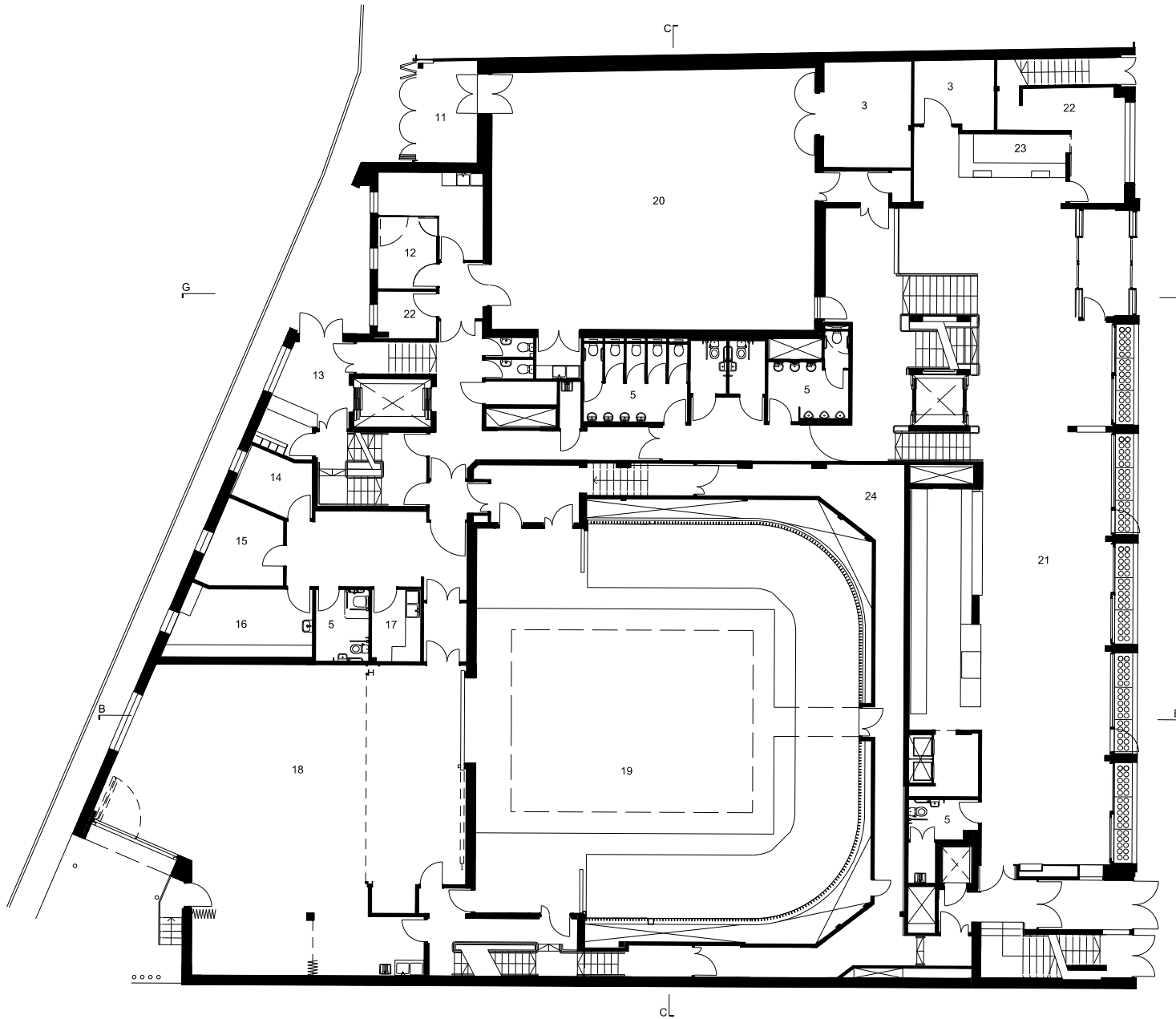
0 2 4 6(m)

PLENUM LEVEL
EVERYMAN THEATRE, LIVERPOOL



ANNOTATION KEY

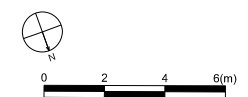
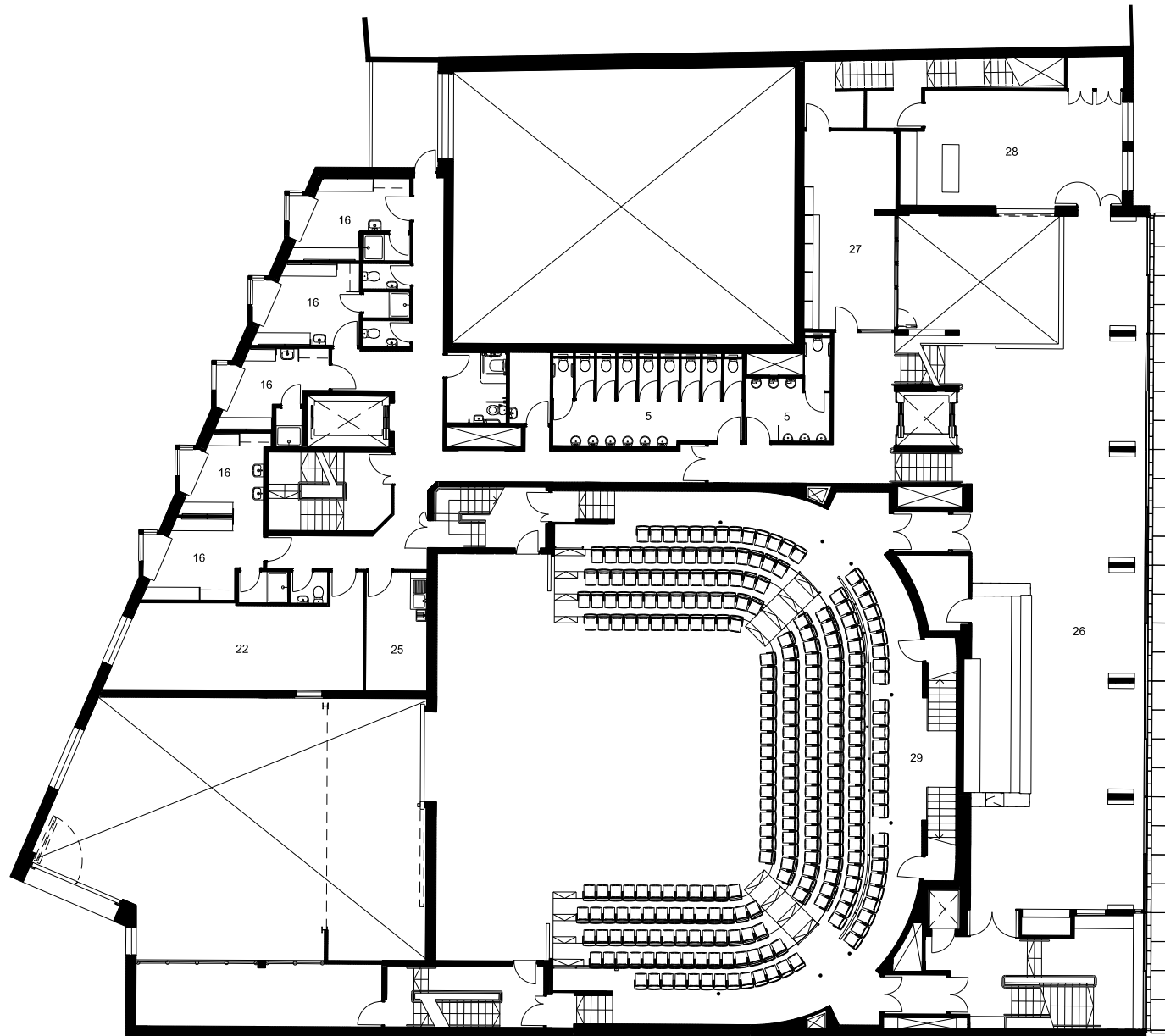
- 1 ELECTRICAL INTAKE ROOM
- 2 RAINWATER TANK ROOM
- 3 STORE
- 4 CLOAKROOM
- 5 W.C.
- 6 BISTRO
- 7 KITCHEN
- 8 CELLAR
- 9 SUB-STAGE
- 10 STAFF CHANGING
- 11 REFUSE STORE
- 12 Y & C CHANGING
- 13 STAGE DOOR
- 14 ACTORS' QUIET ROOM
- 15 STAGE MANAGEMENT
- 16 DRESSING ROOM
- 17 STAGE KITCHEN
- 18 WORKSHOP
- 19 STAGE
- 20 YOUTH AND COMMUNITY (Y&C) STUDIO
- 21 CAFE
- 22 OFFICE
- 23 BOX OFFICE
- 24 GET-ROUND CORRIDOR
- 25 LAUNDRY
- 26 BAR
- 27 WRITERS' ROOM
- 28 FUNCTION ROOM
- 29 AUDITORIUM STALLS
- 30 GREEN ROOM
- 31 WARDROBE
- 32 REHEARSAL ROOM
- 33 SOUND RECORDING ROOM
- 34 SERVER ROOM
- 35 AUDITORIUM CIRCLE
- 36 CONTROL ROOM
- 37 TECHNICAL GALLERY
- 38 MEETING ROOM
- 39 DIMMERS & AMPS
- 40 PLANT
- 41 LIGHTING WORKSHOP
- 42 TECHNICAL GRID
- 43 EXTRACT PLENUM
- 44 FLYTOWER
- 45 AIR SUPPLY PLENUM



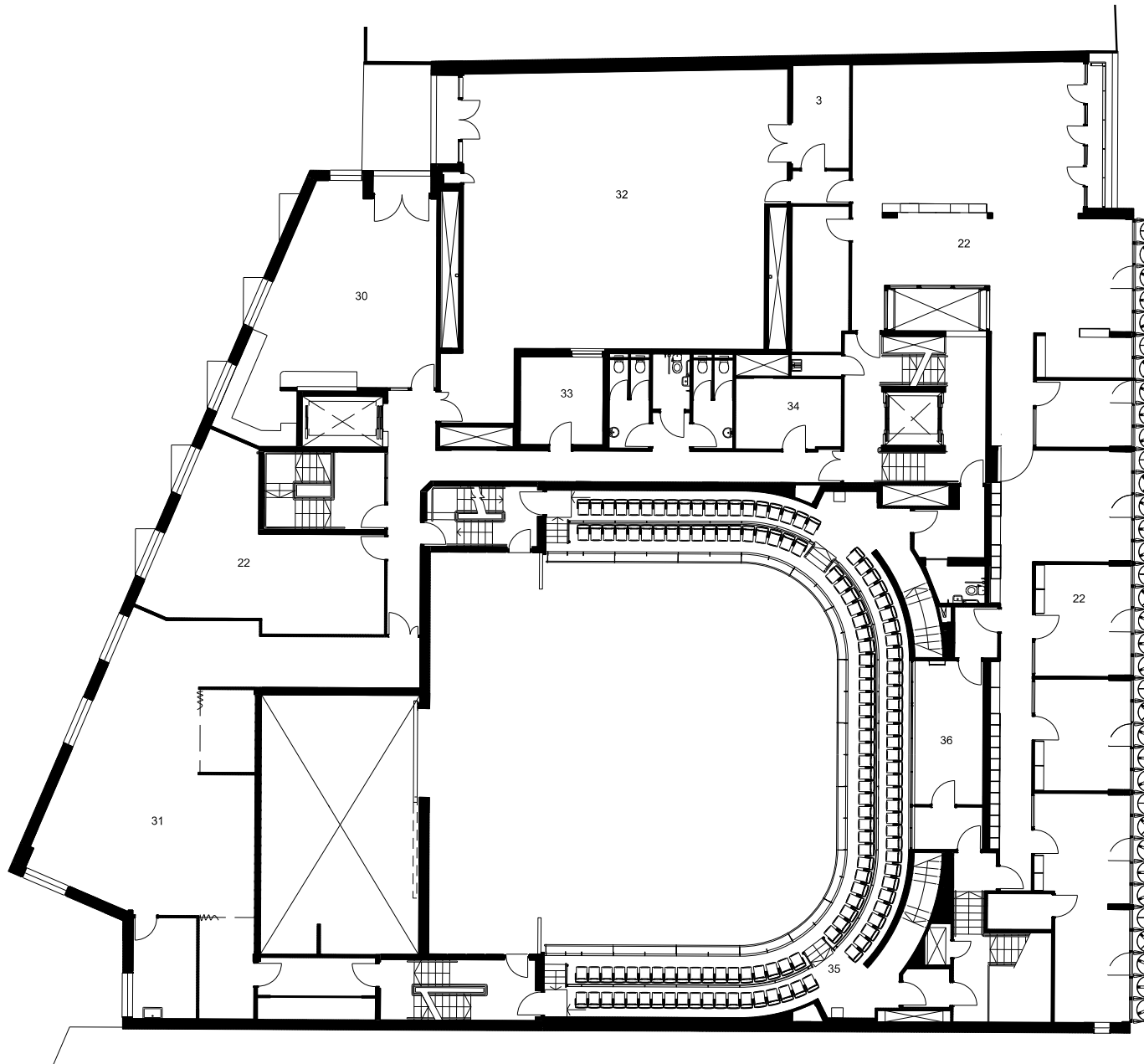
GROUND FLOOR
EVERYMAN THEATRE, LIVERPOOL

ANNOTATION KEY

- 1 ELECTRICAL INTAKE ROOM
- 2 RAINWATER TANK ROOM
- 3 STORE
- 4 CLOAKROOM
- 5 W.C.
- 6 BISTRO
- 7 KITCHEN
- 8 CELLAR
- 9 SUB-STAGE
- 10 STAFF CHANGING
- 11 REFUSE STORE
- 12 Y & C CHANGING
- 13 STAGE DOOR
- 14 ACTORS' QUIET ROOM
- 15 STAGE MANAGEMENT
- 16 DRESSING ROOM
- 17 STAGE KITCHEN
- 18 WORKSHOP
- 19 STAGE
- 20 YOUTH AND COMMUNITY (Y&C) STUDIO
- 21 CAFE
- 22 OFFICE
- 23 BOX OFFICE
- 24 GET-ROUND CORRIDOR
- 25 LAUNDRY
- 26 BAR
- 27 WRITERS' ROOM
- 28 FUNCTION ROOM
- 29 AUDITORIUM STALLS
- 30 GREEN ROOM
- 31 WARDROBE
- 32 REHEARSAL ROOM
- 33 SOUND RECORDING ROOM
- 34 SERVER ROOM
- 35 AUDITORIUM CIRCLE
- 36 CONTROL ROOM
- 37 TECHNICAL GALLERY
- 38 MEETING ROOM
- 39 DIMMERS & AMPS
- 40 PLANT
- 41 LIGHTING WORKSHOP
- 42 TECHNICAL GRID
- 43 EXTRACT PLENUM
- 44 FLYTOWER
- 45 AIR SUPPLY PLENUM



FIRST FLOOR
EVERYMAN THEATRE, LIVERPOOL



ANNOTATION KEY

- 1 ELECTRICAL INTAKE ROOM
- 2 RAINWATER TANK ROOM
- 3 STORE
- 4 CLOAKROOM
- 5 W.C.
- 6 BISTRO
- 7 KITCHEN
- 8 CELLAR
- 9 SUB-STAGE
- 10 STAFF CHANGING
- 11 REFUSE STORE
- 12 Y & C CHANGING
- 13 STAGE DOOR
- 14 ACTORS' QUIET ROOM
- 15 STAGE MANAGEMENT
- 16 DRESSING ROOM
- 17 STAGE KITCHEN
- 18 WORKSHOP
- 19 STAGE
- 20 YOUTH AND COMMUNITY (Y&C) STUDIO
- 21 CAFE
- 22 OFFICE
- 23 BOX OFFICE
- 24 GET-ROUND CORRIDOR
- 25 LAUNDRY
- 26 BAR
- 27 WRITERS' ROOM
- 28 FUNCTION ROOM
- 29 AUDITORIUM STALLS
- 30 GREEN ROOM
- 31 WARDROBE
- 32 REHEARSAL ROOM
- 33 SOUND RECORDING ROOM
- 34 SERVER ROOM
- 35 AUDITORIUM CIRCLE
- 36 CONTROL ROOM
- 37 TECHNICAL GALLERY
- 38 MEETING ROOM
- 39 DIMMERS & AMPS
- 40 PLANT
- 41 LIGHTING WORKSHOP
- 42 TECHNICAL GRID
- 43 EXTRACT PLENUM
- 44 FLYTOWER
- 45 AIR SUPPLY PLENUM

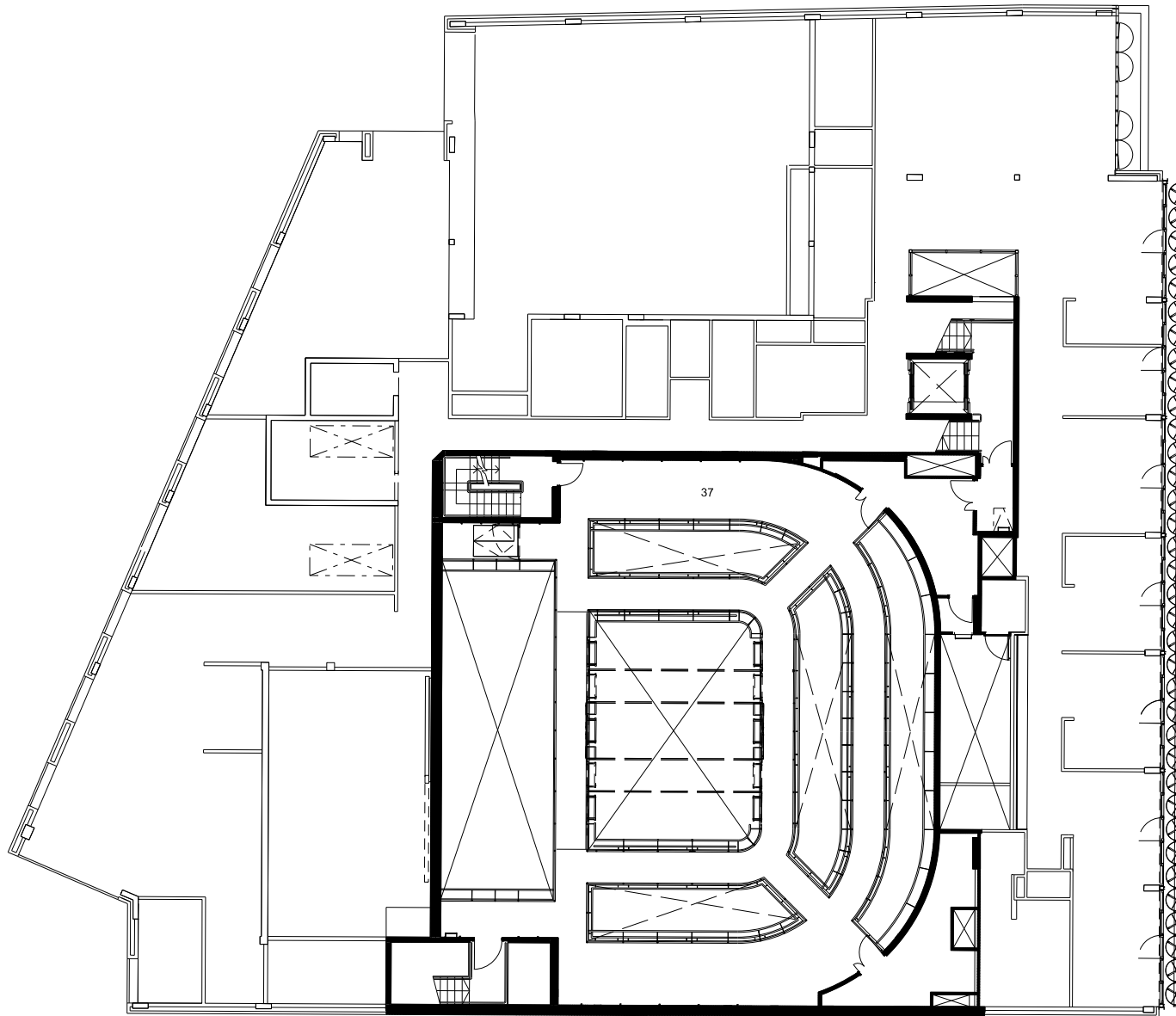


0 2 4 6(m)

SECOND FLOOR
EVERYMAN THEATRE, LIVERPOOL

ANNOTATION KEY

- 1 ELECTRICAL INTAKE ROOM
- 2 RAINWATER TANK ROOM
- 3 STORE
- 4 CLOAKROOM
- 5 W.C.
- 6 BISTRO
- 7 KITCHEN
- 8 CELLAR
- 9 SUB-STAGE
- 10 STAFF CHANGING
- 11 REFUSE STORE
- 12 Y & C CHANGING
- 13 STAGE DOOR
- 14 ACTORS' QUIET ROOM
- 15 STAGE MANAGEMENT
- 16 DRESSING ROOM
- 17 STAGE KITCHEN
- 18 WORKSHOP
- 19 STAGE
- 20 YOUTH AND COMMUNITY (Y&C) STUDIO
- 21 CAFE
- 22 OFFICE
- 23 BOX OFFICE
- 24 GET-ROUND CORRIDOR
- 25 LAUNDRY
- 26 BAR
- 27 WRITERS' ROOM
- 28 FUNCTION ROOM
- 29 AUDITORIUM STALLS
- 30 GREEN ROOM
- 31 WARDROBE
- 32 REHEARSAL ROOM
- 33 SOUND RECORDING ROOM
- 34 SERVER ROOM
- 35 AUDITORIUM CIRCLE
- 36 CONTROL ROOM
- 37 TECHNICAL GALLERY
- 38 MEETING ROOM
- 39 DIMMERS & AMPS
- 40 PLANT
- 41 LIGHTING WORKSHOP
- 42 TECHNICAL GRID
- 43 EXTRACT PLENUM
- 44 FLYTOWER
- 45 AIR SUPPLY PLENUM

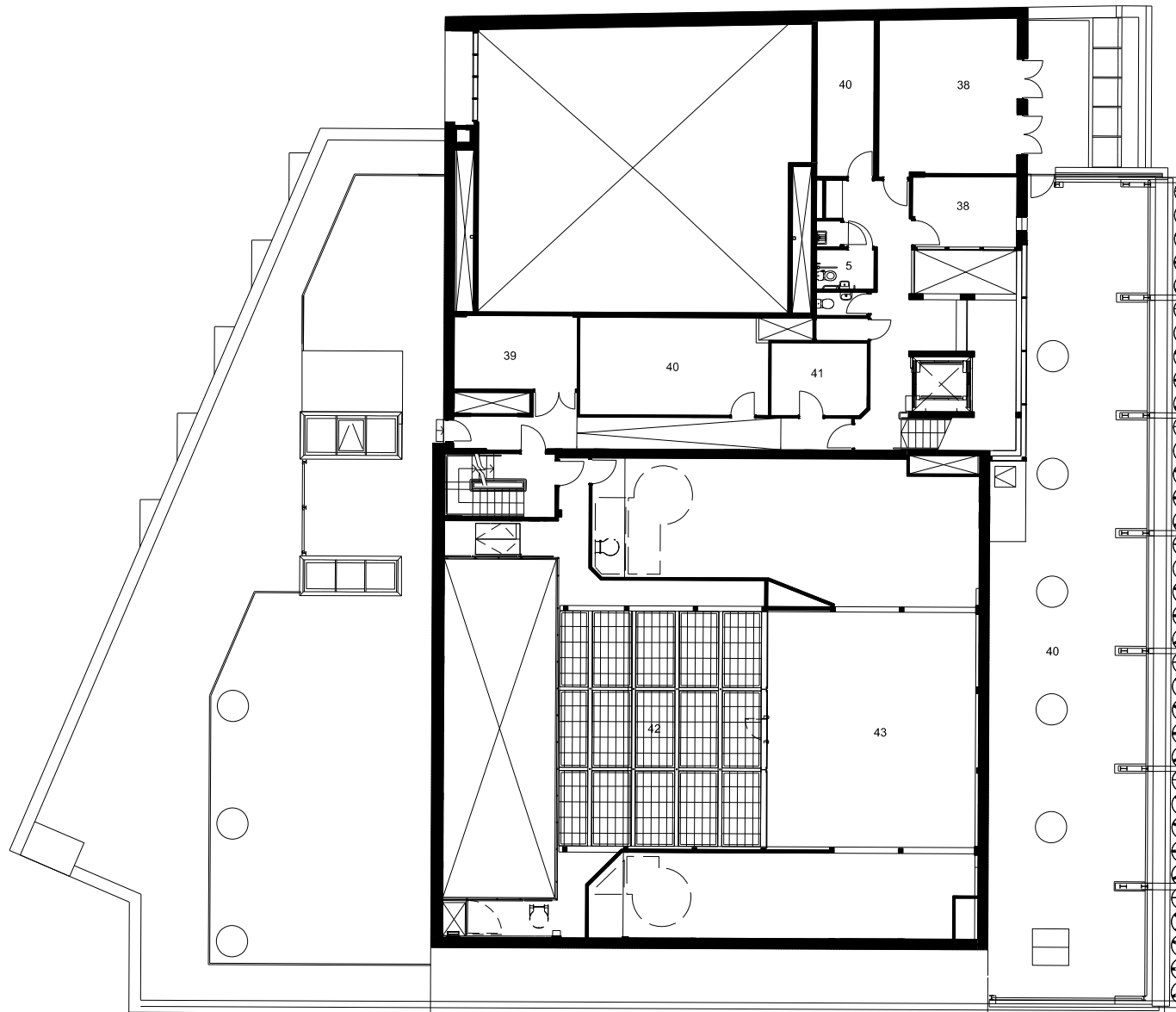


0 2 4 6(m)

SECOND FLOOR MEZZANINE
EVERYMAN THEATRE, LIVERPOOL

ANNOTATION KEY

- 1 ELECTRICAL INTAKE ROOM
- 2 RAINWATER TANK ROOM
- 3 STORE
- 4 CLOAKROOM
- 5 W.C.
- 6 BISTRO
- 7 KITCHEN
- 8 CELLAR
- 9 SUB-STAGE
- 10 STAFF CHANGING
- 11 REFUSE STORE
- 12 Y & C CHANGING
- 13 STAGE DOOR
- 14 ACTORS' QUIET ROOM
- 15 STAGE MANAGEMENT
- 16 DRESSING ROOM
- 17 STAGE KITCHEN
- 18 WORKSHOP
- 19 STAGE
- 20 YOUTH AND COMMUNITY (Y&C) STUDIO
- 21 CAFE
- 22 OFFICE
- 23 BOX OFFICE
- 24 GET-ROUND CORRIDOR
- 25 LAUNDRY
- 26 BAR
- 27 WRITERS' ROOM
- 28 FUNCTION ROOM
- 29 AUDITORIUM STALLS
- 30 GREEN ROOM
- 31 WARDROBE
- 32 REHEARSAL ROOM
- 33 SOUND RECORDING ROOM
- 34 SERVER ROOM
- 35 AUDITORIUM CIRCLE
- 36 CONTROL ROOM
- 37 TECHNICAL GALLERY
- 38 MEETING ROOM
- 39 DIMMERS & AMPS
- 40 PLANT
- 41 LIGHTING WORKSHOP
- 42 TECHNICAL GRID
- 43 EXTRACT PLENUM
- 44 FLYTOWER
- 45 AIR SUPPLY PLENUM

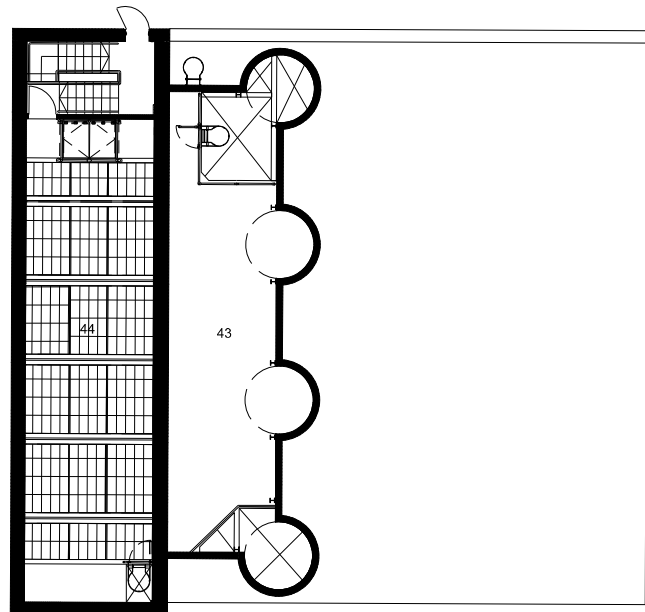


0 2 4 6(m)

THIRD FLOOR
EVERYMAN THEATRE, LIVERPOOL

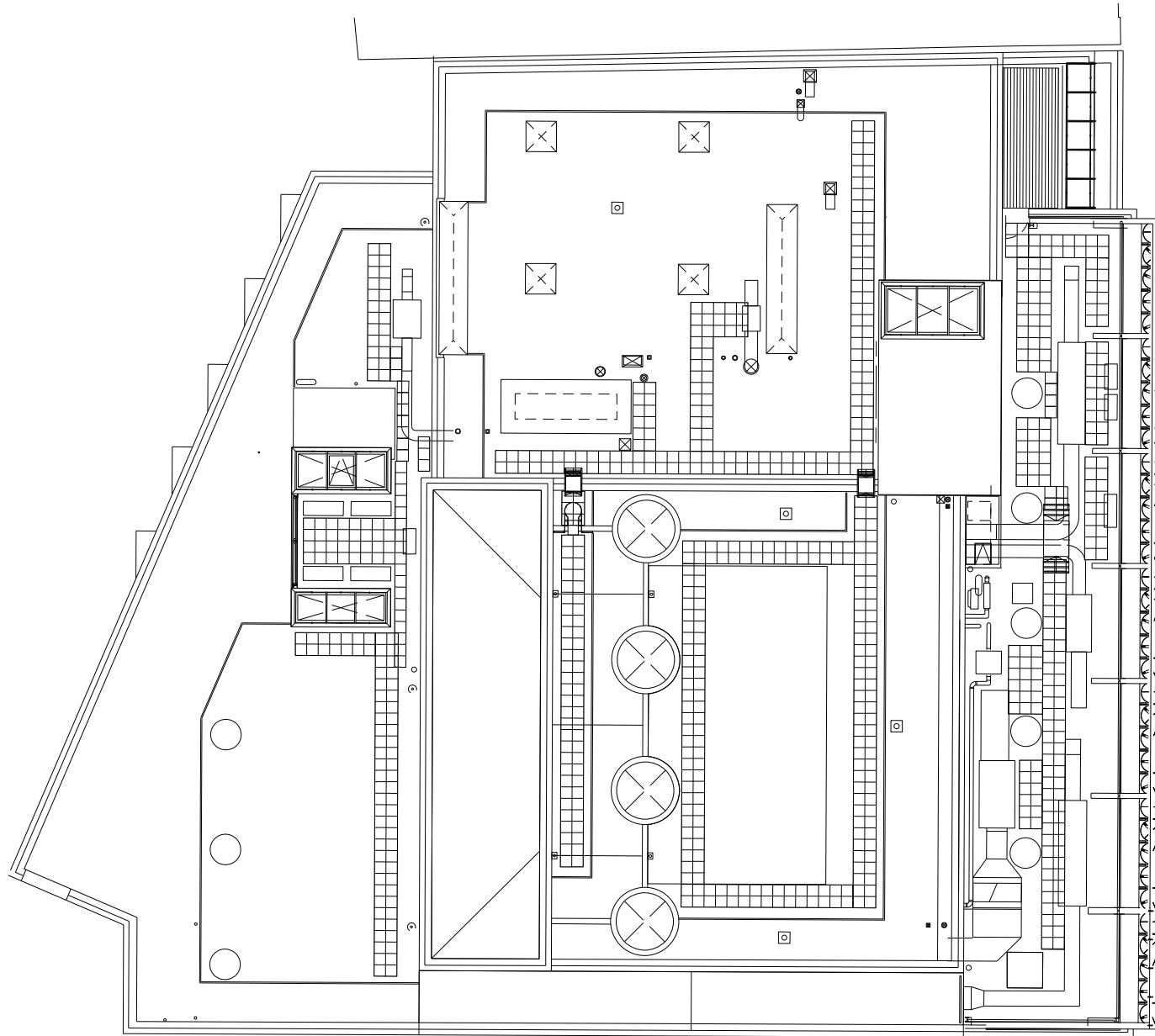
ANNOTATION KEY

- 1 ELECTRICAL INTAKE ROOM
- 2 RAINWATER TANK ROOM
- 3 STORE
- 4 CLOAKROOM
- 5 W.C.
- 6 BISTRO
- 7 KITCHEN
- 8 CELLAR
- 9 SUB-STAGE
- 10 STAFF CHANGING
- 11 REFUSE STORE
- 12 Y & C CHANGING
- 13 STAGE DOOR
- 14 ACTORS' QUIET ROOM
- 15 STAGE MANAGEMENT
- 16 DRESSING ROOM
- 17 STAGE KITCHEN
- 18 WORKSHOP
- 19 STAGE
- 20 YOUTH AND COMMUNITY (Y&C) STUDIO
- 21 CAFE
- 22 OFFICE
- 23 BOX OFFICE
- 24 GET-ROUND CORRIDOR
- 25 LAUNDRY
- 26 BAR
- 27 WRITERS' ROOM
- 28 FUNCTION ROOM
- 29 AUDITORIUM STALLS
- 30 GREEN ROOM
- 31 WARDROBE
- 32 REHEARSAL ROOM
- 33 SOUND RECORDING ROOM
- 34 SERVER ROOM
- 35 AUDITORIUM CIRCLE
- 36 CONTROL ROOM
- 37 TECHNICAL GALLERY
- 38 MEETING ROOM
- 39 DIMMERS & AMPS
- 40 PLANT
- 41 LIGHTING WORKSHOP
- 42 TECHNICAL GRID
- 43 EXTRACT PLENUM
- 44 FLYTOWER
- 45 AIR SUPPLY PLENUM



0 2 4 6(m)

FOURTH FLOOR
EVERYMAN THEATRE, LIVERPOOL



ANNOTATION KEY

- 1 ELECTRICAL INTAKE ROOM
- 2 RAINWATER TANK ROOM
- 3 STORE
- 4 CLOAKROOM
- 5 W.C.
- 6 BISTRO
- 7 KITCHEN
- 8 CELLAR
- 9 SUB-STAGE
- 10 STAFF CHANGING
- 11 REFUSE STORE
- 12 Y & C CHANGING
- 13 STAGE DOOR
- 14 ACTORS' QUIET ROOM
- 15 STAGE MANAGEMENT
- 16 DRESSING ROOM
- 17 STAGE KITCHEN
- 18 WORKSHOP
- 19 STAGE
- 20 YOUTH AND COMMUNITY (Y&C) STUDIO
- 21 CAFE
- 22 OFFICE
- 23 BOX OFFICE
- 24 GET-ROUND CORRIDOR
- 25 LAUNDRY
- 26 BAR
- 27 WRITERS' ROOM
- 28 FUNCTION ROOM
- 29 AUDITORIUM STALLS
- 30 GREEN ROOM
- 31 WARDROBE
- 32 REHEARSAL ROOM
- 33 SOUND RECORDING ROOM
- 34 SERVER ROOM
- 35 AUDITORIUM CIRCLE
- 36 CONTROL ROOM
- 37 TECHNICAL GALLERY
- 38 MEETING ROOM
- 39 DIMMERS & AMPS
- 40 PLANT
- 41 LIGHTING WORKSHOP
- 42 TECHNICAL GRID
- 43 EXTRACT PLENUM
- 44 FLYTOWER
- 45 AIR SUPPLY PLENUM

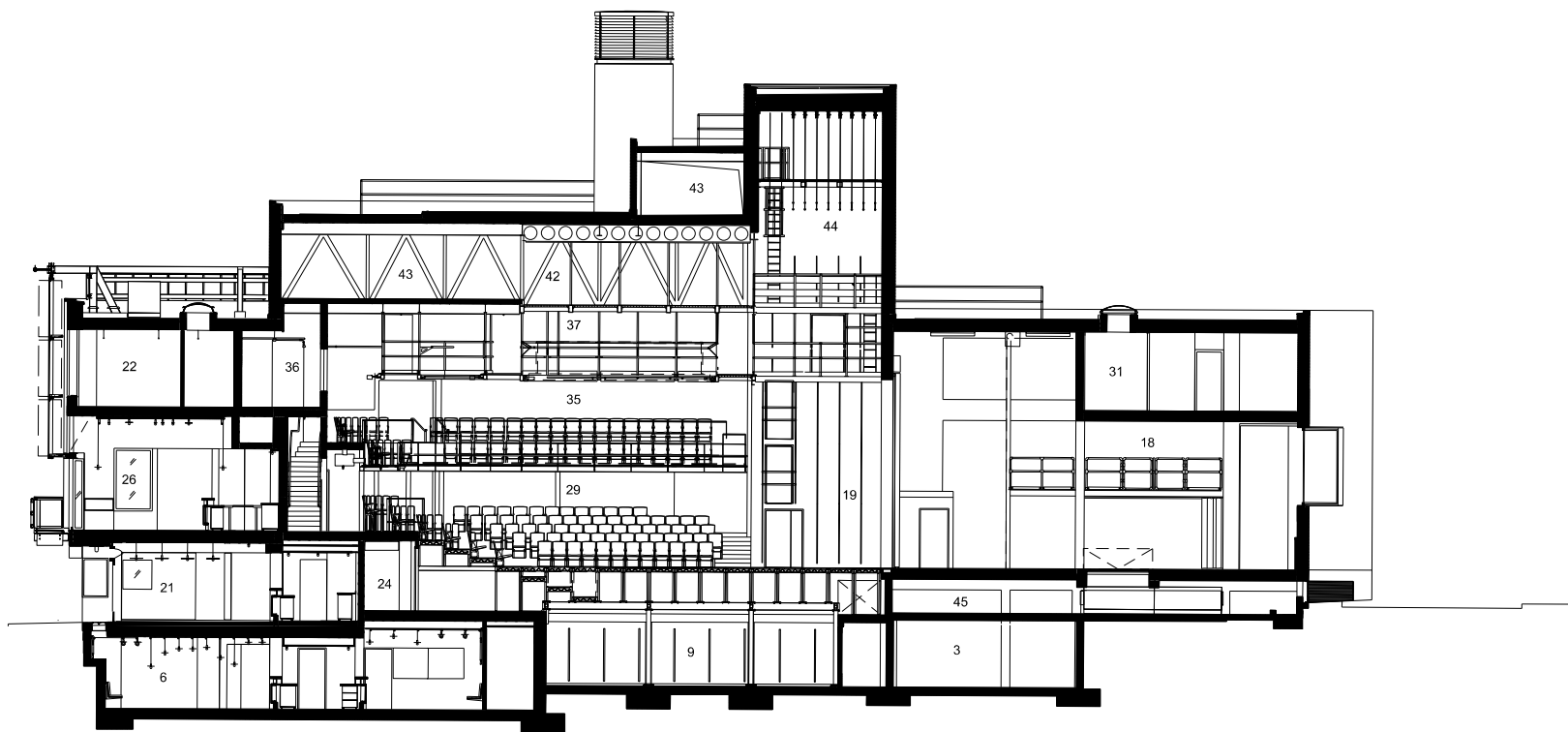


0 2 4 6(m)

ROOF LEVEL
EVERYMAN THEATRE, LIVERPOOL

ANNOTATION KEY

- 1 ELECTRICAL INTAKE ROOM
- 2 RAINWATER TANK ROOM
- 3 STORE
- 4 CLOAKROOM
- 5 W.C.
- 6 BISTRO
- 7 KITCHEN
- 8 CELLAR
- 9 SUB-STAGE
- 10 STAFF CHANGING
- 11 REFUSE STORE
- 12 Y & C CHANGING
- 13 STAGE DOOR
- 14 ACTORS' QUIET ROOM
- 15 STAGE MANAGEMENT
- 16 DRESSING ROOM
- 17 STAGE KITCHEN
- 18 WORKSHOP
- 19 STAGE
- 20 YOUTH AND COMMUNITY (Y&C) STUDIO
- 21 CAFE
- 22 OFFICE
- 23 BOX OFFICE
- 24 GET-ROUND CORRIDOR
- 25 LAUNDRY
- 26 BAR
- 27 WRITERS' ROOM
- 28 FUNCTION ROOM
- 29 AUDITORIUM STALLS
- 30 GREEN ROOM
- 31 WARDROBE
- 32 REHEARSAL ROOM
- 33 SOUND RECORDING ROOM
- 34 SERVER ROOM
- 35 AUDITORIUM CIRCLE
- 36 CONTROL ROOM
- 37 TECHNICAL GALLERY
- 38 MEETING ROOM
- 39 DIMMERS & AMPS
- 40 PLANT
- 41 LIGHTING WORKSHOP
- 42 TECHNICAL GRID
- 43 EXTRACT PLENUM
- 44 FLYTOWER
- 45 AIR SUPPLY PLENUM

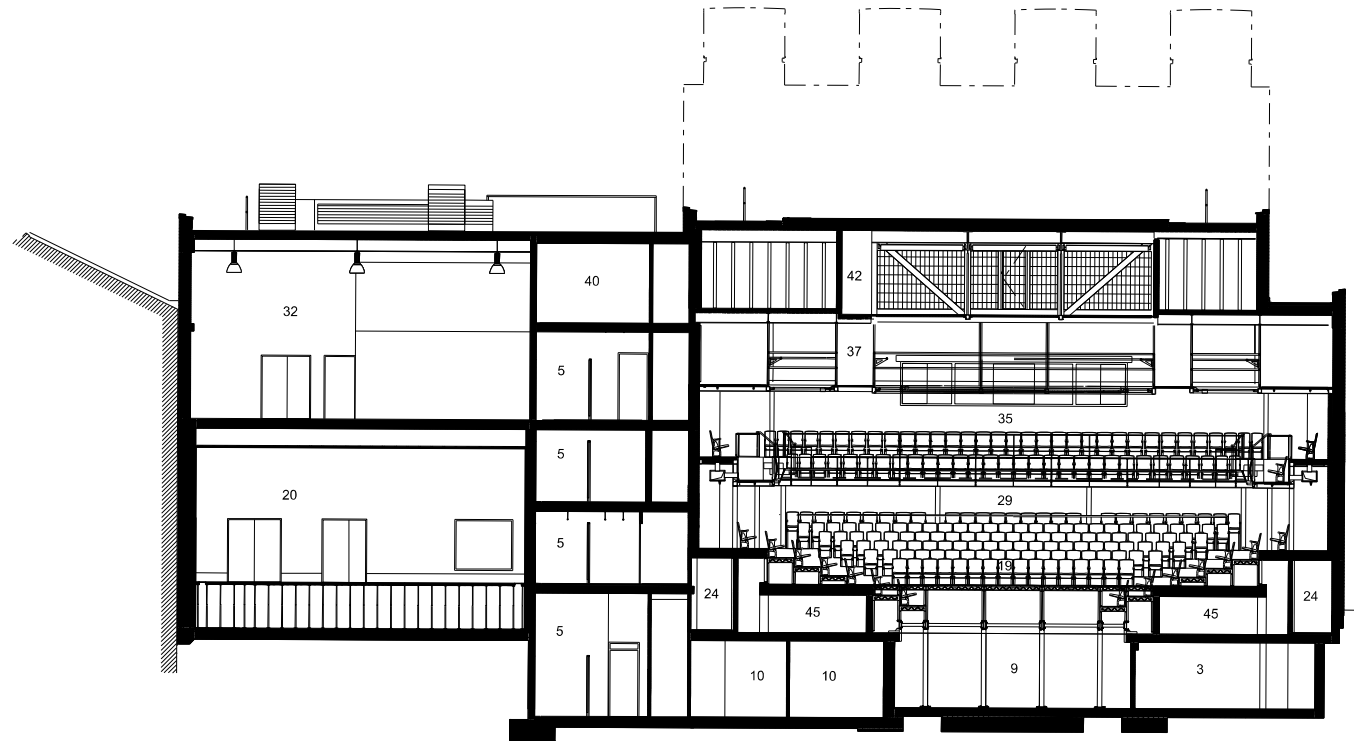


0 2 4 6(m)

SECTION BB
EVERYMAN THEATRE, LIVERPOOL

ANNOTATION KEY

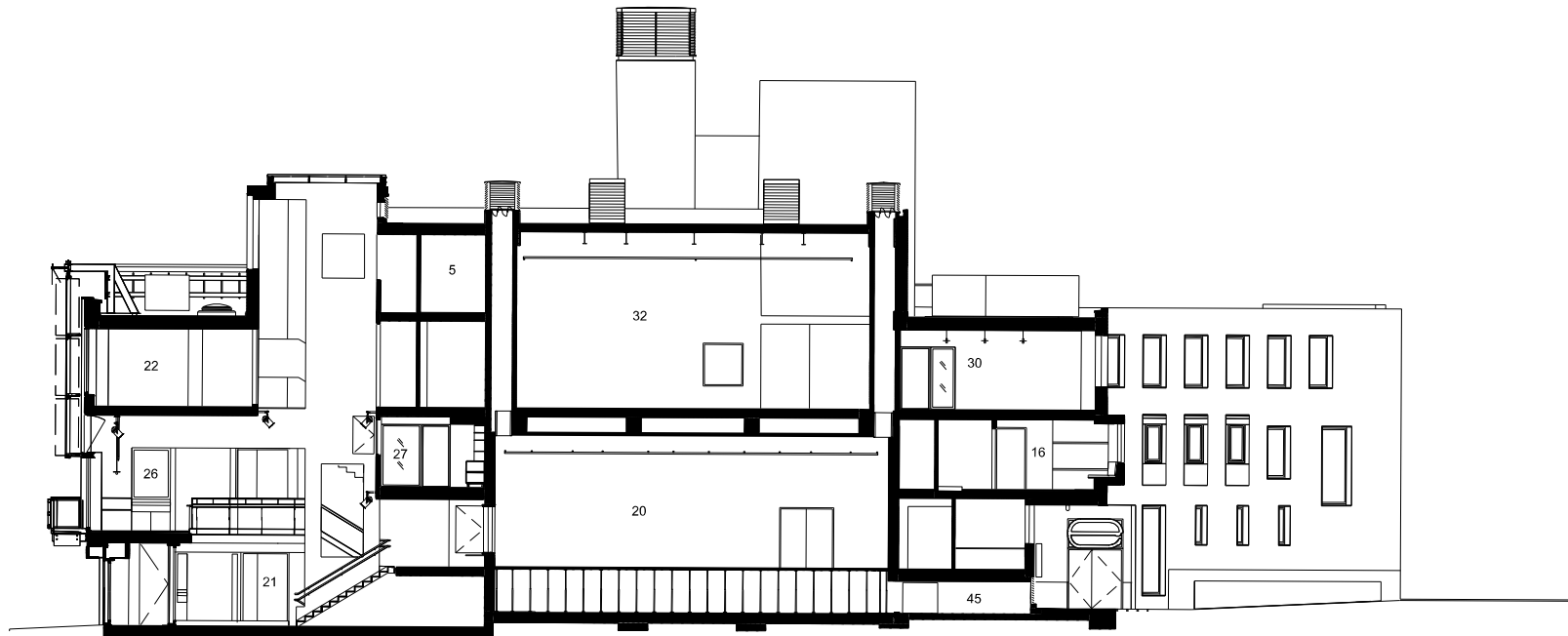
- 1 ELECTRICAL INTAKE ROOM
- 2 RAINWATER TANK ROOM
- 3 STORE
- 4 CLOAKROOM
- 5 W.C.
- 6 BISTRO
- 7 KITCHEN
- 8 CELLAR
- 9 SUB-STAGE
- 10 STAFF CHANGING
- 11 REFUSE STORE
- 12 Y & C CHANGING
- 13 STAGE DOOR
- 14 ACTORS' QUIET ROOM
- 15 STAGE MANAGEMENT
- 16 DRESSING ROOM
- 17 STAGE KITCHEN
- 18 WORKSHOP
- 19 STAGE
- 20 YOUTH AND COMMUNITY (Y&C) STUDIO
- 21 CAFE
- 22 OFFICE
- 23 BOX OFFICE
- 24 GET-ROUND CORRIDOR
- 25 LAUNDRY
- 26 BAR
- 27 WRITERS' ROOM
- 28 FUNCTION ROOM
- 29 AUDITORIUM STALLS
- 30 GREEN ROOM
- 31 WARDROBE
- 32 REHEARSAL ROOM
- 33 SOUND RECORDING ROOM
- 34 SERVER ROOM
- 35 AUDITORIUM CIRCLE
- 36 CONTROL ROOM
- 37 TECHNICAL GALLERY
- 38 MEETING ROOM
- 39 DIMMERS & AMPS
- 40 PLANT
- 41 LIGHTING WORKSHOP
- 42 TECHNICAL GRID
- 43 EXTRACT PLENUM
- 44 FLYTOWER
- 45 AIR SUPPLY PLENUM



SECTION CC
EVERYMAN THEATRE, LIVERPOOL

ANNOTATION KEY

- 1 ELECTRICAL INTAKE ROOM
- 2 RAINWATER TANK ROOM
- 3 STORE
- 4 CLOAKROOM
- 5 W.C.
- 6 BISTRO
- 7 KITCHEN
- 8 CELLAR
- 9 SUB-STAGE
- 10 STAFF CHANGING
- 11 REFUSE STORE
- 12 Y & C CHANGING
- 13 STAGE DOOR
- 14 ACTORS' QUIET ROOM
- 15 STAGE MANAGEMENT
- 16 DRESSING ROOM
- 17 STAGE KITCHEN
- 18 WORKSHOP
- 19 STAGE
- 20 YOUTH AND COMMUNITY (Y&C) STUDIO
- 21 CAFE
- 22 OFFICE
- 23 BOX OFFICE
- 24 GET-ROUND CORRIDOR
- 25 LAUNDRY
- 26 BAR
- 27 WRITERS' ROOM
- 28 FUNCTION ROOM
- 29 AUDITORIUM STALLS
- 30 GREEN ROOM
- 31 WARDROBE
- 32 REHEARSAL ROOM
- 33 SOUND RECORDING ROOM
- 34 SERVER ROOM
- 35 AUDITORIUM CIRCLE
- 36 CONTROL ROOM
- 37 TECHNICAL GALLERY
- 38 MEETING ROOM
- 39 DIMMERS & AMPS
- 40 PLANT
- 41 LIGHTING WORKSHOP
- 42 TECHNICAL GRID
- 43 EXTRACT PLENUM
- 44 FLYTOWER
- 45 AIR SUPPLY PLENUM



0 2 4 6(m)

SECTION GG
EVERYMAN THEATRE, LIVERPOOL



