

# BUNKER HOUSE

## WAR. FEATURES OF DESIGN IN NEW REALITIES

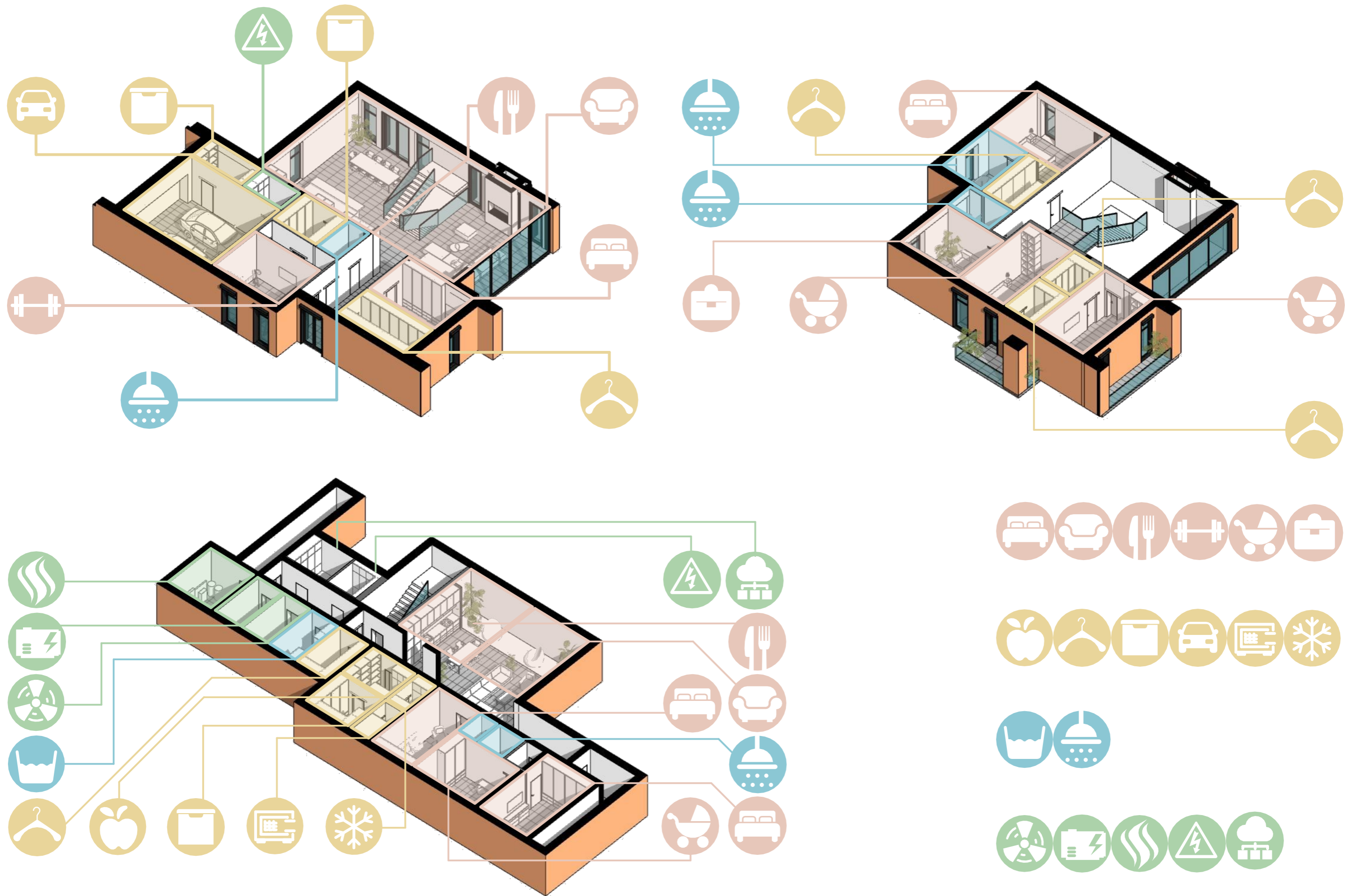


- External enclosing structures must be made of durable materials (brick, concrete);
- The number of windows and their size must be minimized to protect the occupants of the house from damage due to shattering glass;
- Provide for the closing of windows with reinforced armored window sash or deaf sliding facade systems, shutters.

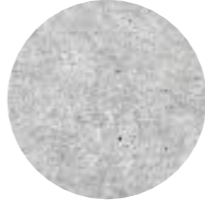
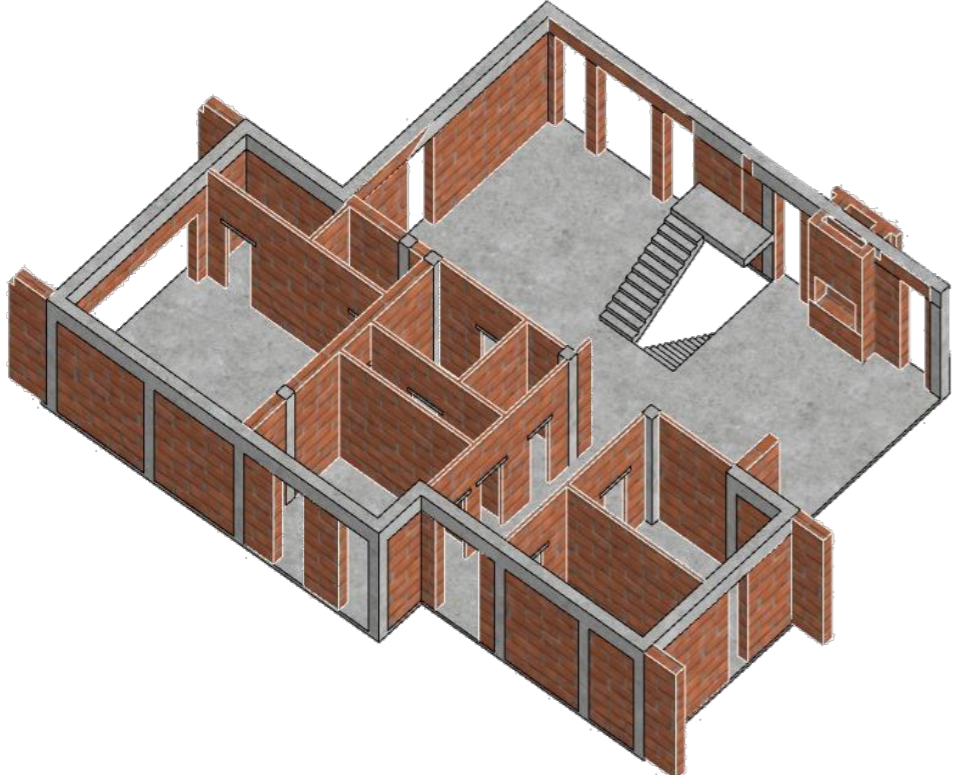
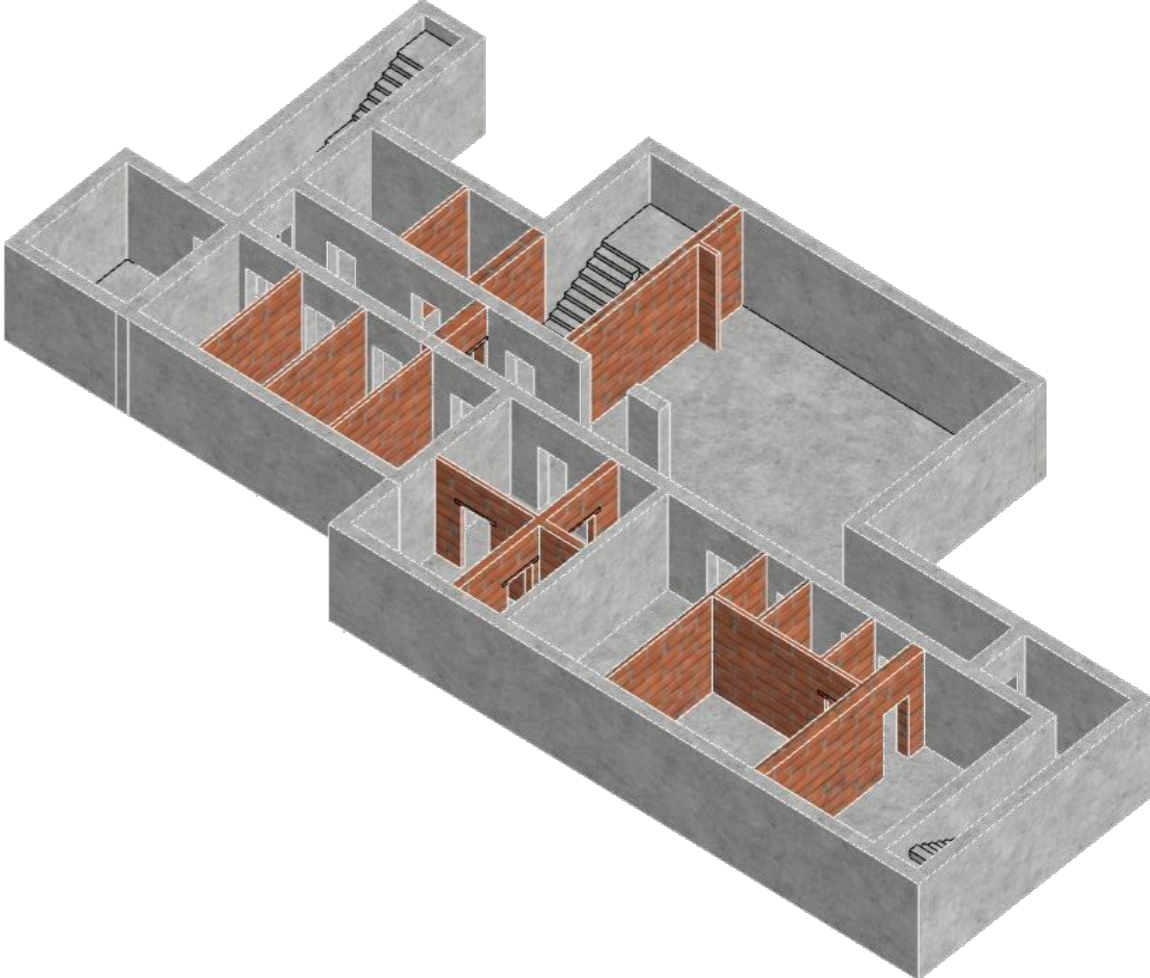
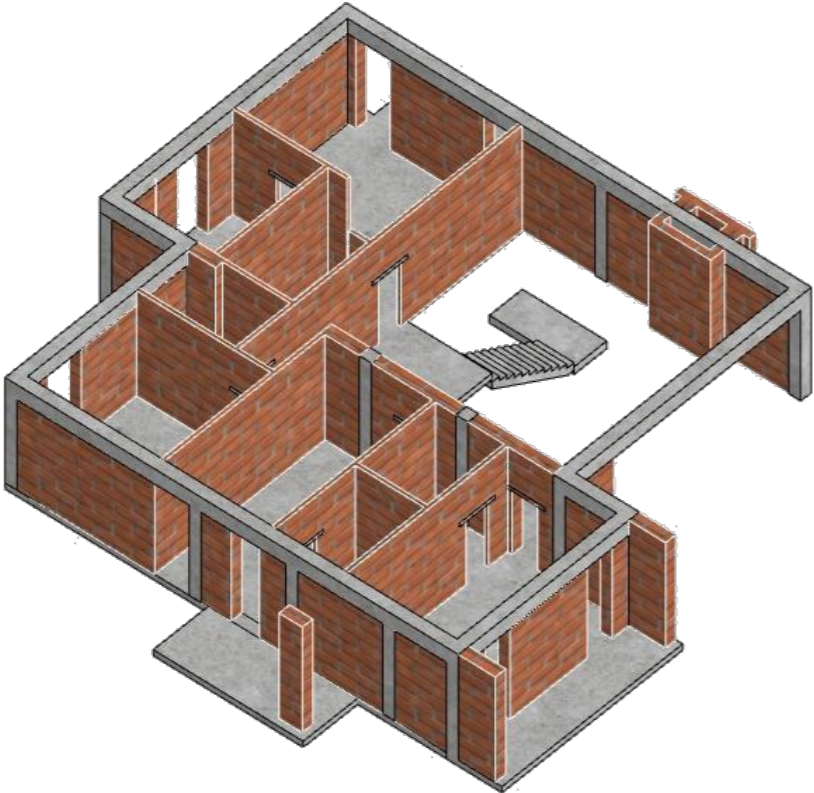
In the past, most individual houses were designed without underground floors (due to the high cost of earthworks)  
In the future, a change is predicted in favor of the installation of comfortable underground storage, which could be people for a long time;

- The presence of two scattered exits from the ofb wahsiecmh esnhto (uoldn elead directly to the street);
- The area of the basement should take into account tetrhme slotanyg -of people (comfortable beds and seats);
- Premises with stocks of products, water, bathrooms, wiptrhe amni saeustononomous diesel generator must be designed;
- Special attention should be paid to the enrgeiqnueireerinmge nntest fwoorrks and equipment;

# SCHEME OF THE PLANNING DECISION. ROOM FUNCTION



# CONSTRUCTION SCHEME. MATERIALS



EXTERNAL WALLS OF THE BASEMENT:  
reinforced concrete 400 mm

COLUMNS:  
reinforced concrete 380x380 mm

INTERFLOOR FLOORS:  
reinforced concrete 200 mm

OUTSIDE WALLS:  
brick masonry 380 mm

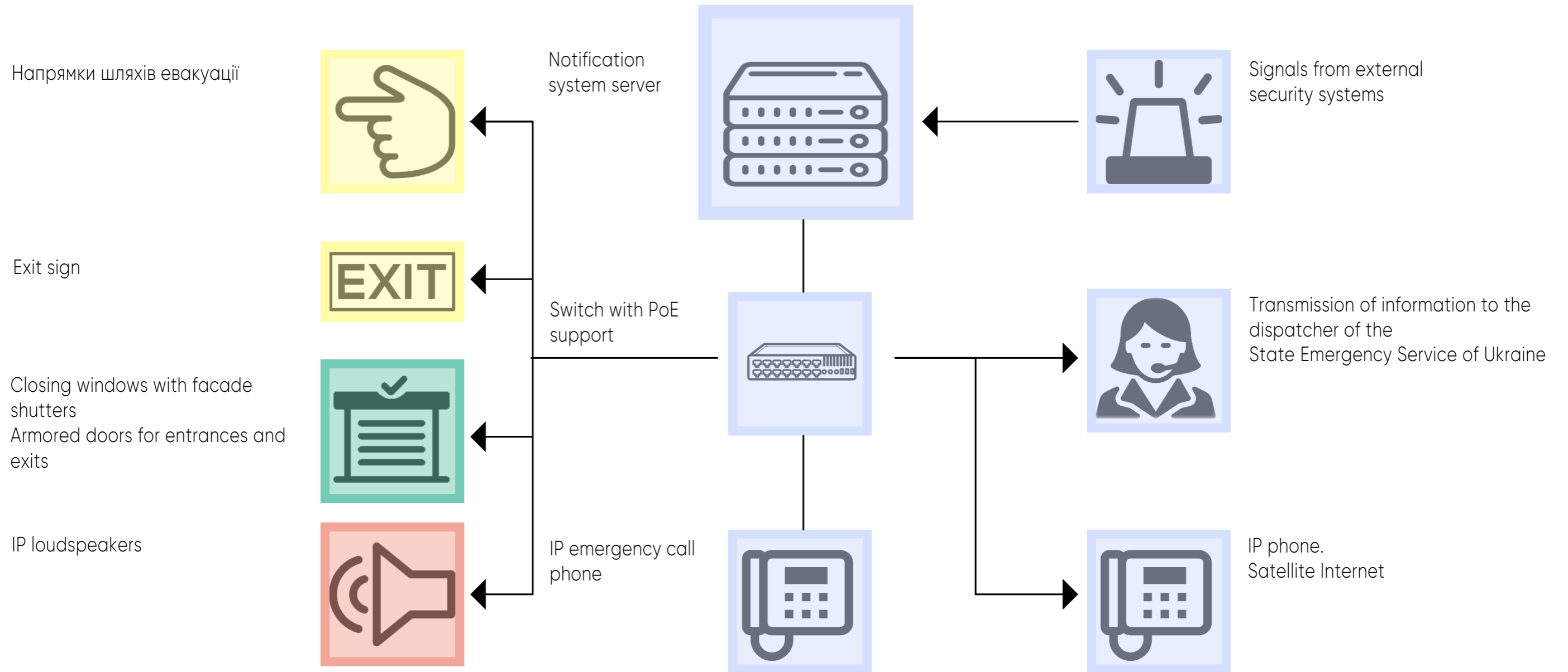
INTERFLOOR STAIRS:  
ferroconcrete

BEAMS:  
reinforced concrete 380 mm

WINDOW AND DOOR OPENINGS:  
concrete bridges 140 mm

INTERNAL WALLS:  
brick masonry 250 mm  
brick masonry 120 mm

# LIFE-THREAK NOTIFICATION SCHEME







- Light notification. Signal boards and pointers
  - Illumination of escape routes and descent into the basement.
  - Backup light from an autonomous electric generator
- Sound notification - loudspeakers.
  - Air distress alert

- Communication and security systems
- Closing windows with facade shutters
  - Armored door

# BASEMENT PLAN (SHELTER)

## SYMBOL

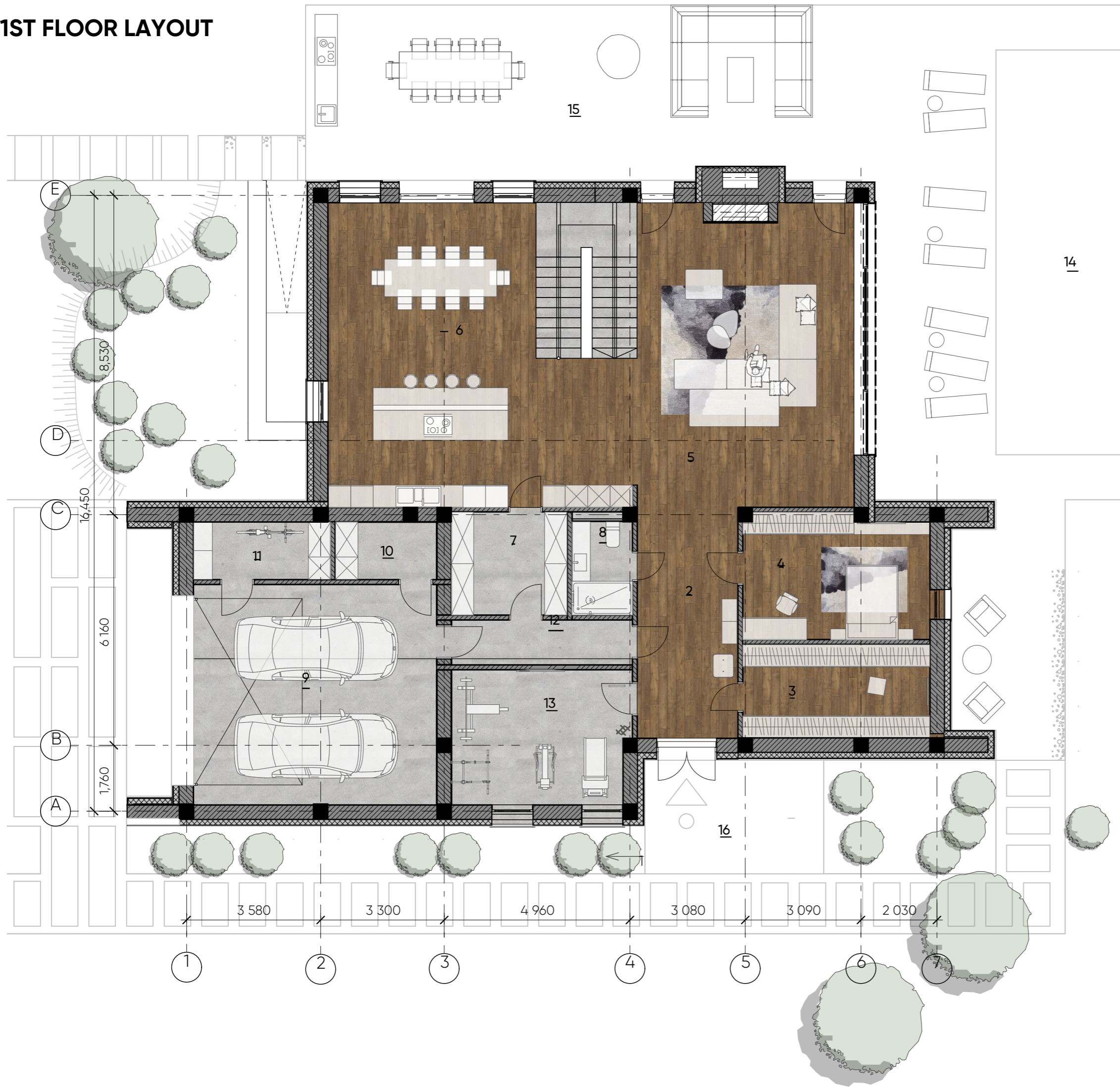
-  External walls:  
- reinforced concrete 380 mm -  
expanded polystyrene 150 mm
-  Walls and partitions: brickwork 120, 250 mm
-  Windows with security shutters
-  External door with security shutters



## EXPLANATION OF BASEMENT ROOMS

Nº	Name	Area m2	Nº	Name	Area m2	Nº	Name	Area m2	Nº	Name	Area, m2	Nº	Name	Area, m2
1	Stairs	16.65	6	Garden with artificial light	14.44	12	Bedroom	19.97	18	Laundry	7.31	24	Tambour	5.36
2	Hall	10.77	7	Freezers	3.32	13	Corridor	2.21	19	Vent chamber	6.99	25	Stairs (evacuation)	6.18
3	Wardrobe	7.67	8	Pantry of things	9.48	14	Shower	3.86	20	Generator	6.85	26	Tambour	2.44
4	Living room	30.69	9	Safe	3.79	15	Bathroom	2.08	21	Electrical panel	4.95	27	Stairs	10,28
5	Kitchen-dining room	21.62	10	Guest bedroom	17.34	16	Corridor	8,18	22	Monitoring room/	7.18			
6	Food and water storeroom	8.35	11	Bedroom	17.70	17	Corridor	9.25	23	Server boiler room	11.77			

# 1ST FLOOR LAYOUT



2	Corridor	16.61
3	Wardrobe	12.50
4	Guest bedroom	15.80
5	Living room	51.35
6	Kitchen	67.34
7	Pantry	8.54
8	Guest bathroom	4.07
9	Garage	38,22
10	Electrical panel	4.21
11	Pantry	5.65
12	Corridor	5.79
13	Gym	16.99
14	Terrace with pool	36.03
15	Terrace with barbecue	21,13
16	Porch	4.06

- Outside walls:**
  - reinforced concrete 380 mm
  - polystyrene foam 150 mm
- Walls and partitions:**
  - brickwork 120, 250 mm
- Windows with protective roller blinds**
- External door with protective roller blinds**

# 2ND FLOOR LAYOUT

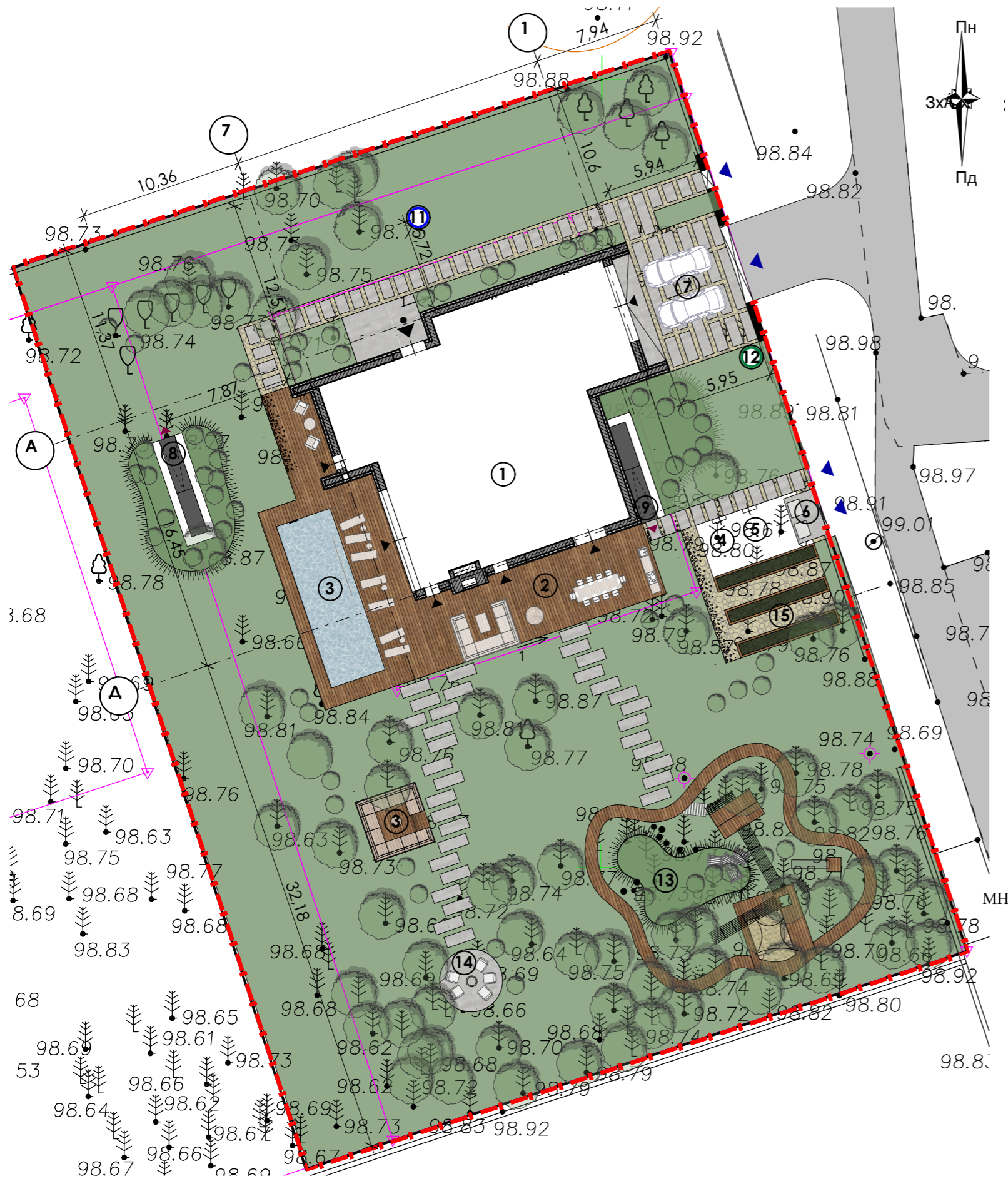


1	Hall	21,13
2	Children's	20.06
3	Master bedroom	22.00
4	Master bath	11.58
5	Master wardrobe	9.60
6	Office	16.81
7	Bathroom	5.80
8	Children's	19.68
9	Wardrobe	6.29
10	Wardrobe	6.07
11	Loggia (k=0.5)	3.15
12	Balcony (k=0.3)	2.52
13	Balcony (k=0.3)	2.89
		<b>147.58</b>

- Outside walls:
  - reinforced concrete 380 mm
  - polystyrene foam 150 mm
- Walls and partitions: - brickwork 120, 250 mm
- Windows with protective roller blinds
- External door with protective roller blinds



# MASTER PLAN OUTLINE



- - - Design area limit
- ▲ Main entrance to the house
- ▲ Another entrance to the house
- ▲ Vehicle evacuation from the
- basement Entrance/arrival to the
- territory Designed house
- Paving
- Game
- Bushes
- Existing green spaces
- Lawn
- Terraces

- 1 Individual residential building
- 2 Residential terraces
- 3 Swimming pool
- 4 Storage room for garden inverter
- 5 Security room
- 6 Utility yard with trash cans
- 7 Guest parking
- 8 Emergency exit
- 9 Emergency exit
- 10 Patio
- 11 Well
- 12 Septic
- 13 Children playground
- 14 Resting-place
- 15 Garden bed

1	Plot area (topographical survey)	0,265 ha
2	Built-up area (house with terraces)	564,51 m <sup>2</sup>
3	(21.3%) - The area of footpaths, parking	299,05 m <sup>2</sup>
4	(11.28%) - Landscaping area (67.42%)	1787, 41 m <sup>2</sup>

1	The area of the premises of the house	662,79 m <sup>2</sup>
2	Summer premises area	227,3 m <sup>2</sup>
3	/(with reduced coefficient k=0.5, k=0.3)	/69,44 m <sup>2</sup>
	Total floor space	890,09 m <sup>2</sup>

FACADE IN AXES A-E



# FACADE IN AXES E-A



# FACADE IN AXES 1-7



# FACADE IN AXES 7-1

