

PROJECT DATA PLANNING OF URBAN SETTLEMENT

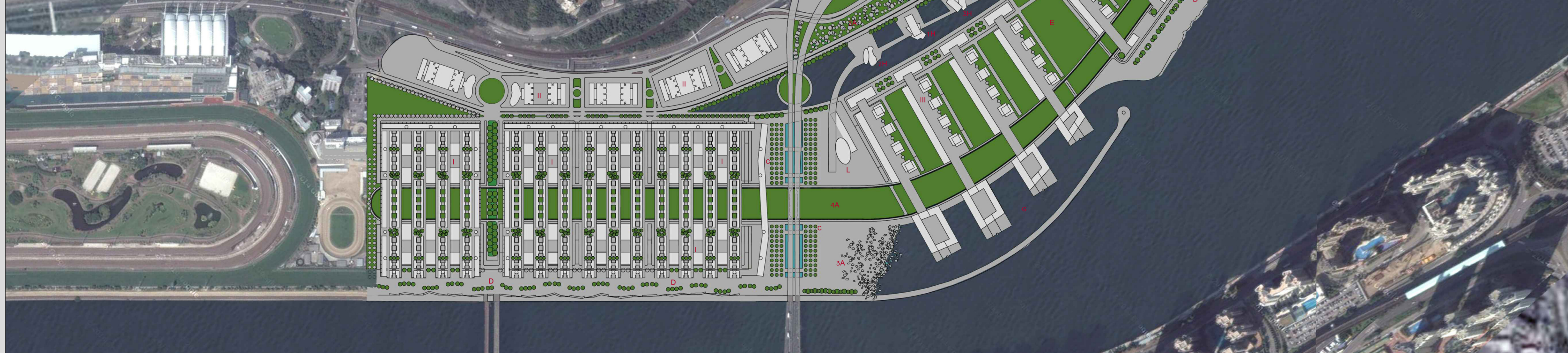
- TOTAL AREA OF URBAN SETTLEMENT SLP: MQ 1.047.050,00 EXPANDABLE
- 1 TOTAL GROSS FLOOR AREA OF RESIDENTIAL: MQ 611.630,00
 - 2 GROSS AREA OF TRADE OVERALL: MQ 88.790,00
 - 3 TOTAL GROSS AREA OF THE DIRECTIONAL: MQ 346.630,00
 - 4 EXPECTED POPULATION: N 21.278

LEGEND OF THE MASTERPLAN

- I EXTENSIVE PLATFORM SYSTEM
 - II DOUBLE TOWERS SYSTEM
 - III LINEAR PLATFORM SYSTEM
- A- Public Park:
 1A wooded Park to the Cultural basin
 2A woods
 3A biodiversity playful park
 4A linear urban park
- B- Green hill with trees
- C- wooded square
- D- Pedestrian areas on the waterfront (Shing Mun River Channel- Sha Tin Hoi)
- E- Areas for sports
- F- Rowing area
- G- Basin Marina
- H- Basin for Culture unnavigable:
 1H House of Music
 2H Museum of the environmental sustainability
 3H Theatre
- L- Congress Palace
- M- Tram Station



GRAZIN AERIAL VIEW FROM SHING MUN RIVER



MASTERPLAN 1:4000



VIEW OF THE WATERFRONT



VIEW FROM THE VIADUCT



VIEW FROM THE OVERPASS