

Turnkey bespoke interiors in Locarno

Cucina, mobilio living&dining, pannellatura corridoio, mobilio notte e servizi su misura

Special Project for a private client in Locarno

Design: Andrea Laudini

Foto: Matteo Rossi



Flessibilità progettuale, gestione degli spazi, arredo chiavi in mano TM Italia

Realizzazione arredo chiavi in mano di intero appartamento progettato da Andrea Laudini. La cucina si affaccia sul lago attraverso la grande cornice metallica. La zona living è allestita con mobilio in Sicomoro, pareti giorno e tavolo realizzato a disegno. I due cabinet in Sicomoro sono sospesi e dotati di retroilluminazione e sound system integrato.

TM Italia si è occupata anche della pannellatura che prosegue dalla cucina su tutto il corridoio e che funge da parete divisoria con porte delle camere da letto e i servizi. Tutte le partizioni interne dello spazio architettonico sono gestite attraverso mobilio TM Italia e pareti mobili con porte basculanti realizzate a disegno.

Nella camera da letto padronale è stato realizzato un mobile testata letto a tutta altezza con finitura laccato opaco con intarsio in pelle, coordinato con la cabina armadio.

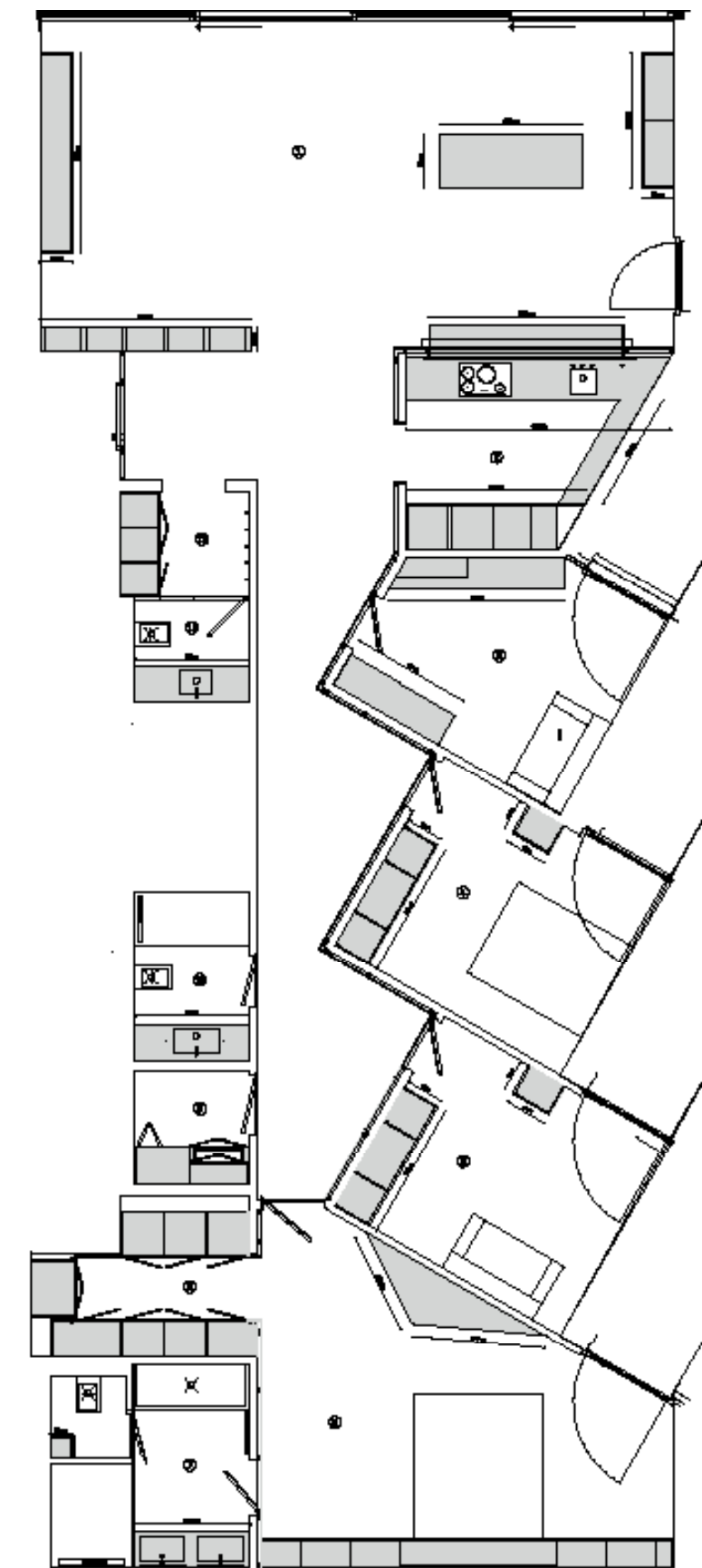
Legno Noce Canaletto invece è stato utilizzato nel mobilio della zona notte e lo studio. Sono stati realizzati armadi, cassettiere e una scrivania.

Nell'appartamento sono stati realizzati anche tre servizi con finiture personalizzate di vetro satinato, metallizzato Rame, Noce Canaletto, pietra Taj Mahal e Fusion Wow Dark.

© TM Italia 2018. Company with certified Quality Management System in accordance with ISO 9001,
100% Made in Italy manufacturing process, 100% recycled wood panels.

TM Italia s.r.l.

Headquarter: I - 63100 Ascoli Piceno · Via del Fornaio, 24 · T (+39) 0736 815212 · F (+39) 0736 814648
info@tmitalia.com · www.tmitalia.com



1. Living
2. Cucina
3. Studio
4. Camera ospiti
5. Camera ospiti
6. Camera padronale
7. Servizi camera padronale
8. Cabina armadio
9. Lavanderia
10. Servizi
11. Servizi
12. Disimpegno

© TM Italia 2018. Company with certified Quality Management System in accordance with ISO 9001,
100% Made in Italy manufacturing process, 100% recycled wood panels.

TM Italia s.r.l.

Headquarter: I - 63100 Ascoli Piceno · Via del Fornaio, 24 · T (+39) 0736 815212 · F (+39) 0736 814648
info@tmitalia.com · www.tmitalia.com

Cucina con apertura sulla zona living
Special Project for a private client in Locarno
Design: Andrea Laudini
Foto: Matteo Rossi



Panoramica:

- Location: **Locarno**
- Superficie della cucina: **9,5 m²**
- Layout: **composizione lineare con lato colonne e isola con apertura piano snack sul living**
- Modello colonne: **D90 con maniglie outside laccate**
- Modello basi: **G180**
- Finitura ante e frontali: **personalizzato laccato opaco NCS S2005-Y50R**
- Pannellatura: **pannelli laterali imbottito cucina laccato opaco NCS S2005-Y50R**

- Customizzazione: **isola con apertura piano snack sul living in metallo finitura Bronzo antico; pannellatura sopra la isola con aspiratore ad incasso e luci LED; sviluppo pareti della cucina lato soggiorno laccate NCS S2005-Y50R opaco; fascia superiore di chiusura colonne con fresate di aerazione in massello battentato laccato NCS S2005-Y60**

© TM Italia 2018. Company with certified Quality Management System in accordance with ISO 9001,
100% Made in Italy manufacturing process, 100% recycled wood panels.

TM Italia s.r.l.

Headquarter: I - 63100 Ascoli Piceno · Via del Fornaio, 24 · T (+39) 0736 815212 · F (+39) 0736 814648
info@tmitalia.com · www.tmitalia.com

Area living&dining: mobile interparete, tavolo dining, mobili sospesi

Special Project for a private client in Locarno

Design: Andrea Laudini

Foto: Matteo Rossi



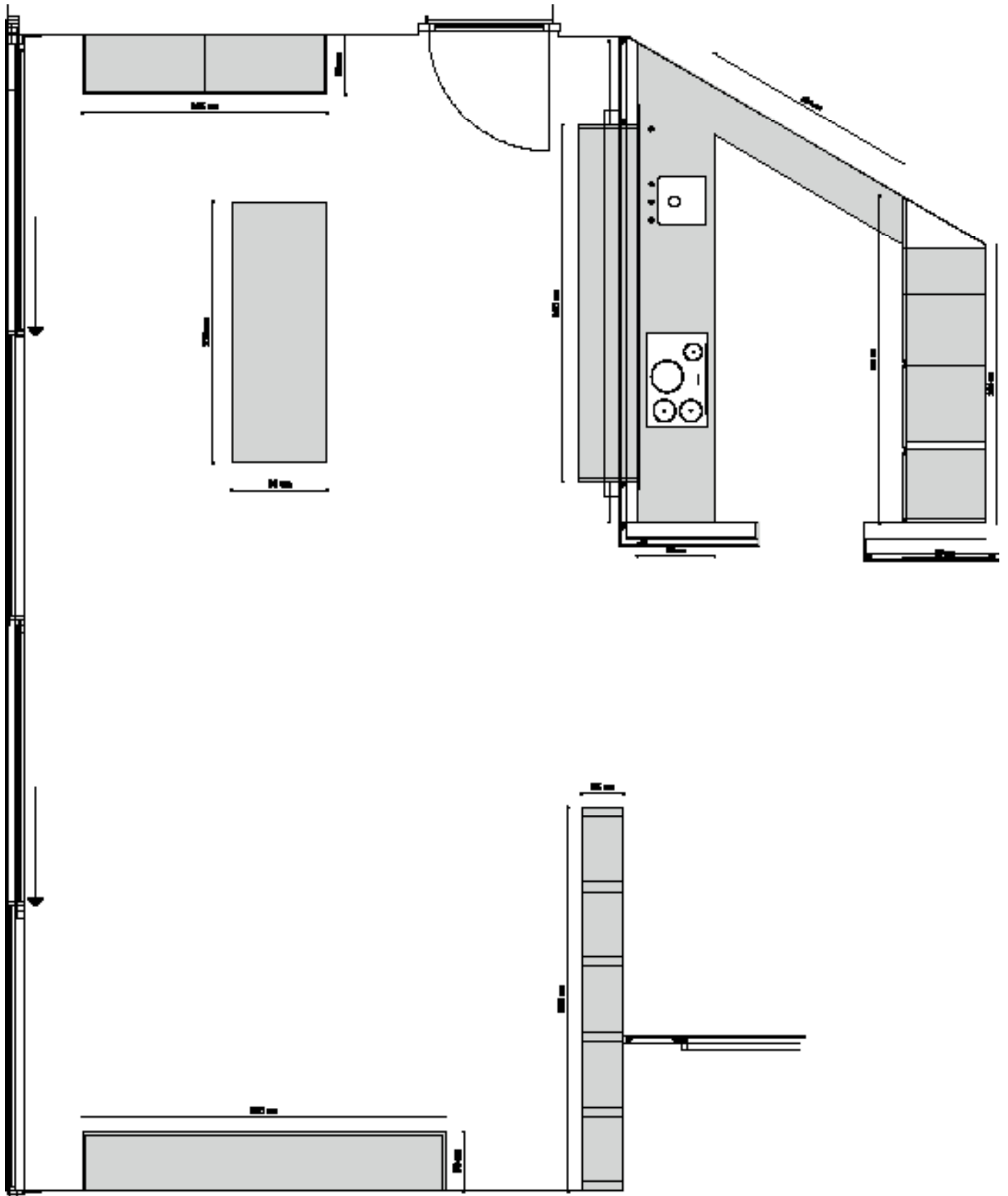
Panoramica:

- Location: Locarno
- Superficie: 49 m²
- Mobile interparete: composto da 6 spalle - impiallacciato Sicomoro con inserti in metallo con finitura Bronzo antico di verniciatura, luci LED per retroilluminazione delle schiene in vetro con rete metallica bronzo
- Tavolo dining: struttura tavolo in metallo finitura Bronzo antico, piano in vetro stratificato con interno rete metallica, inserti in massello impiallacciato Sicomoro, misure: L: 2200 mm, P: 1000 mm, H: 750 mm, completa il tavolo una prolunga in impiallacciato Sycamore con gambe ripiegabili in massello
- Modello mobili sospesi: T45 EVO in legno essenza Sicomoro
- Mobile sospeso con 2 cassette push&pull e ripiano fisso in vetro retroilluminato
- Mobile sospeso con 3 cassette push&pull e 3 antine a ribalta pantografate e rivestite in tessuto per acustica, vani superiori predisposti per installazione interna del sistema acustico SONOS + Blu Ray, Streamer + Control system

© TM Italia 2018. Company with certified Quality Management System in accordance with ISO 9001,
100% Made in Italy manufacturing process, 100% recycled wood panels.

TM Italia s.r.l.

Headquarter: I - 63100 Ascoli Piceno · Via del Fornaio, 24 · T (+39) 0736 815212 · F (+39) 0736 814648
info@tmitalia.com · www.tmitalia.com



© TM Italia 2018. Company with certified Quality Management System in accordance with ISO 9001,
100% Made in Italy manufacturing process, 100% recycled wood panels.

TM Italia s.r.l.

Headquarter: I - 63100 Ascoli Piceno · Via del Fornaio, 24 · T (+39) 0736 815212 · F (+39) 0736 814648
info@tmitalia.com · www.tmitalia.com

Camera padronale con cabina armadio e servizi

Special Project for a private client in Locarno

Design: Andrea Laudini

Foto: Matteo Rossi



Panoramica camera da letto:

- Location: Locarno
- Superficie: 35 m²
- Modello: D90
- Layout: mobile testata letto a tutta altezza e mobile basso di forma triangolare in legno Sicomoro fatti su misura
- Mobile testata letto: composto da moduli: colonna, base con cestoni, porta-cuscino, pensile, cassetti sospesi, pensile vasistas; finitura laccato NCS S2005-Y50R opaco intarsio in pelle e illuminazione LED
- Mobile basso: base triangolare in legno Sicomoro, bordi a 45° con 2 cestoni e 2 ante apertura ribalta
- Customizzazione: porta camera matrimoniale superficie esterna con specchio, superficie interna laccata con intarsio in pelle; pannellatura boiserie con porta intermedia per bagno laccato NCS S2005-Y50R opaco con intarsio in pelle

Panoramica cabina armadio:

- Completa di cassettiere interne, specchi interni, luci LED per vani armadio, vani armadio, aste appendiabiti, tutte le aperture push&pull
- Finitura ante: Laccato NCS S2005-Y50R opaco con intarsio in pelle
- Finitura struttura: Laccato NCS S2005-Y50R opaco

© TM Italia 2018. Company with certified Quality Management System in accordance with ISO 9001, 100% Made in Italy manufacturing process, 100% recycled wood panels.

TM Italia s.r.l.

Headquarter: I - 63100 Ascoli Piceno · Via del Fornaio, 24 · T (+39) 0736 815212 · F (+39) 0736 814648
info@tmitalia.com · www.tmitalia.com

Servizi camera padronale

Special Project for a private client in Locarno

Design: Andrea Laudini

Foto: Matteo Rossi



Panoramica:

- Location: Locarno
 - Layout: base lineare incassata con parete in vetro
 - Modello: 6 cassettoni push&pull e bordatura 45°; specchi su struttura colore personalizzato con luci laterali LED; piano in vetro laccato a colore
 - Finitura ante e frontali: Vetro extrachiaro satinato retrolaccato NCS S2005-Y50R
 - Piano: pietra Taj Mahal
- Customizzazione: parete doccia in vetro stratificato; porta in vetro extrachiaro satinato retrolaccato NCS S2005-Y50R; doppio lavabo in pietra Taj Mahal sospeso sul mobile e dotato di vasche assemblate

© TM Italia 2018. Company with certified Quality Management System in accordance with ISO 9001,
100% Made in Italy manufacturing process, 100% recycled wood panels.

TM Italia s.r.l.

Headquarter: I - 63100 Ascoli Piceno · Via del Fornaio, 24 · T (+39) 0736 815212 · F (+39) 0736 814648
info@tmitalia.com · www.tmitalia.com

Servizi

Special Project for a private client in Locarno

Design: Andrea Laudini

Foto: Matteo Rossi



Bagno di servizio:

- Layout: **mobile sospeso lineare a incasso**
- Modello: **3 cassette, pensile con pannello specchio con retroilluminato a LED**
- Finitura ante e frontali: **Noce Canaletto**
- Piano e rivestimento parete: **pietra Taj Mahal**

· Customizzazione: **piano in pietra Taj Mahal sospeso sul mobile, con vasca assemblata su disegno**

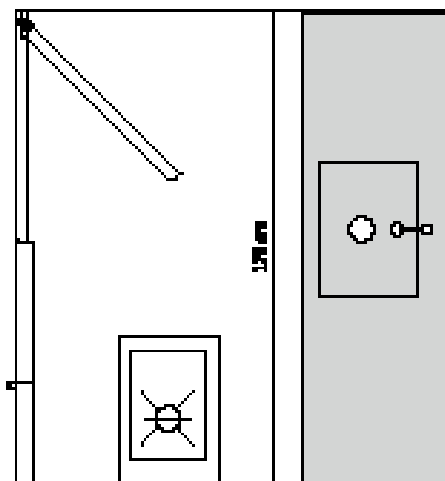
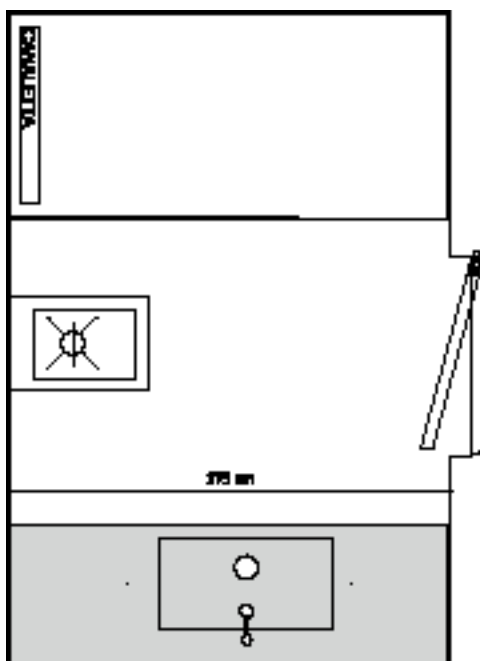
Bagno ospiti

- Layout: **mobile sospeso lineare a incasso**
- Modello: **base con casettoni, pannello con specchio**
- Finitura ante e frontali: **metalizzato VM501 Rame**
- Piano: **pietra Fusion Wow Dark**

© TM Italia 2018. Company with certified Quality Management System in accordance with ISO 9001,
100% Made in Italy manufacturing process, 100% recycled wood panels.

TM Italia s.r.l.

Headquarter: I - 63100 Ascoli Piceno · Via del Fornaio, 24 · T (+39) 0736 815212 · F (+39) 0736 814648
info@tmitalia.com · www.tmitalia.com

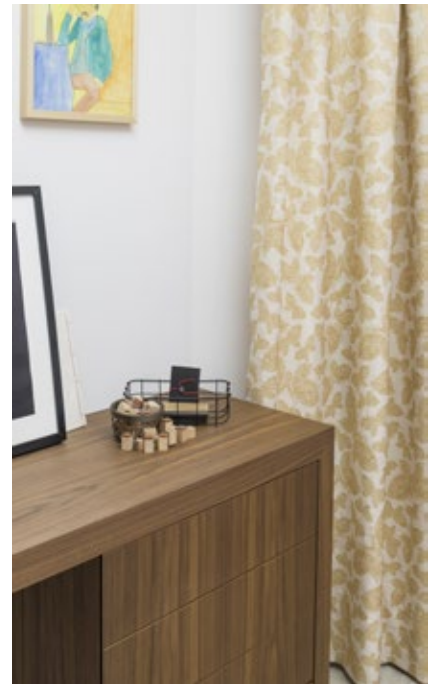
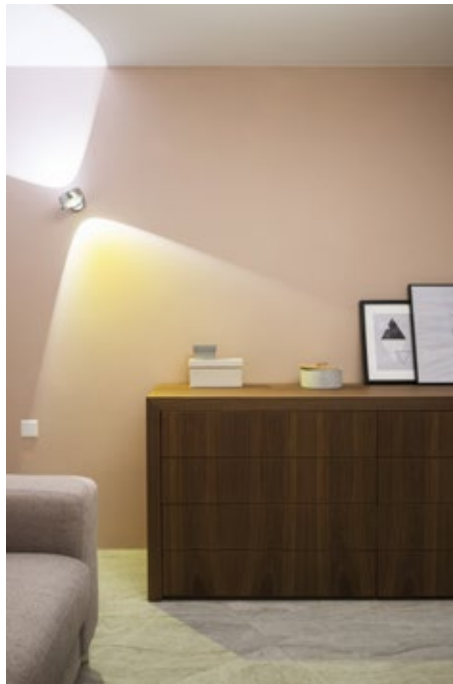


Mobilio camere e studio

Special Project for a private client in Locarno

Design: Andrea Laudini

Foto: Matteo Rossi



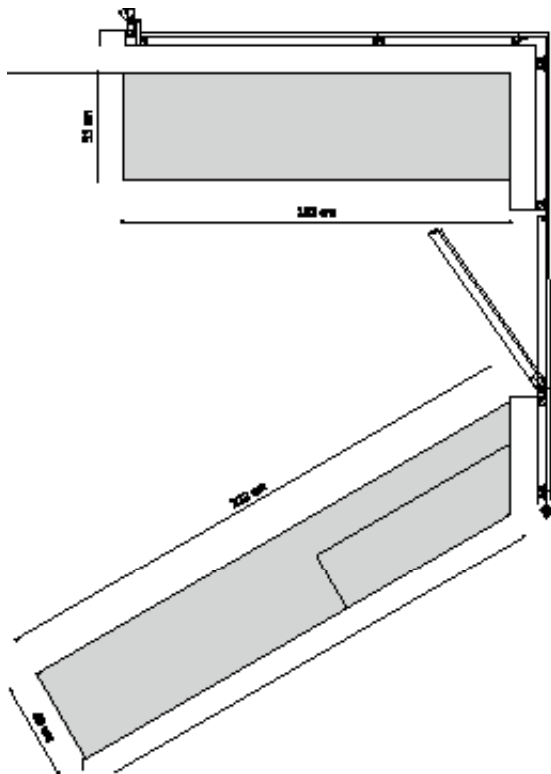
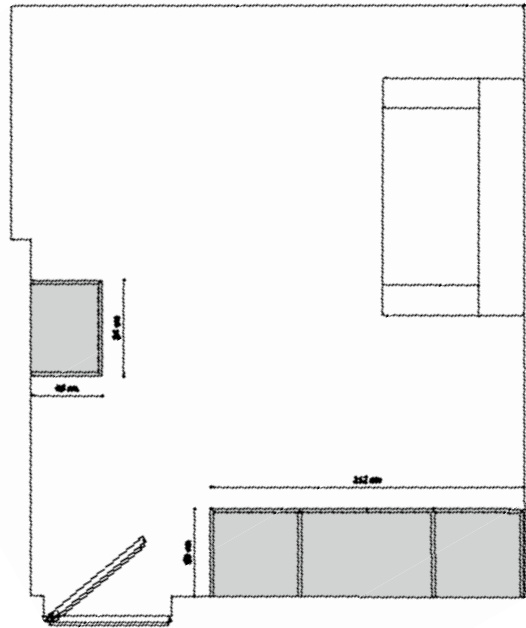
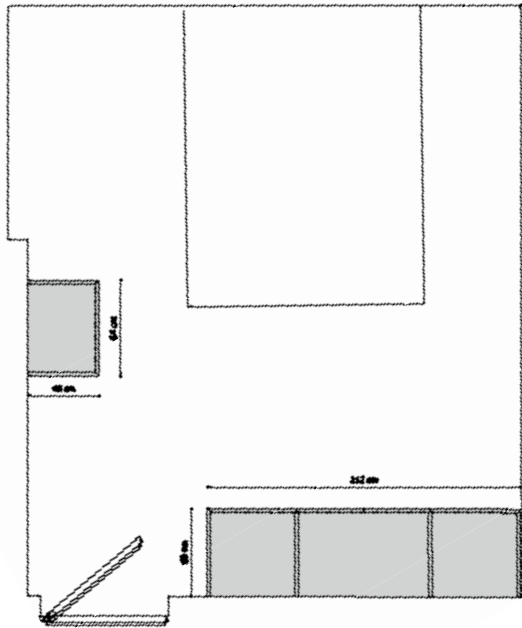
Panoramica:

- Location: **Locarno**
- Superficie: **13 m² cad**
- Mobilio: **mobile armadio con 4 ante con bordi 45°, luci LED con sensori e appendiabiti; settimano con apertura push&pull; scrivania + cassettera integrata; mensole laccate opache S1510-Y90R spessore 40 mm**
- Struttura: **Noce Canaletto a fiamma verticale**
- Ante e frontali cassetti: **Noce Canaletto a fiamma verticale**

© TM Italia 2018. Company with certified Quality Management System in accordance with ISO 9001,
100% Made in Italy manufacturing process, 100% recycled wood panels.

TM Italia s.r.l.

Headquarter: I - 63100 Ascoli Piceno · Via del Fornaio, 24 · T (+39) 0736 815212 · F (+39) 0736 814648
info@tmitalia.com · www.tmitalia.com



© TM Italia 2018. Company with certified Quality Management System in accordance with ISO 9001,
100% Made in Italy manufacturing process, 100% recycled wood panels.

TM Italia s.r.l.

Headquarter: I - 63100 Ascoli Piceno · Via del Fornaio, 24 · T (+39) 0736 815212 · F (+39) 0736 814648
info@tmitalia.com · www.tmitalia.com

Turnkey bespoke interiors in Locarno

Kitchen, living&dining furniture, corridor paneling, bathrooms&bedrooms furniture

Special Project for a private client in Locarno

Design: Andrea Laudini

Foto: Matteo Rossi



Design flexibility, space management, TM Italia turnkey furniture

Turnkey project of an entire apartment designed by Andrea Laudini. The kitchen overlooks the lake through a large metal frame. The living area furniture - cabinets and a custom-made table is in Sycamore. The two cabinets are suspended, backlit and equipped with an integrated sound system.

TM Italia took care also of the paneling that continues from the kitchen across the corridor and acts as a partition wall complete of bedroom and bathroom doors. All internal partitions of the architectural space are managed through TM Italia furniture and mobile walls with tilting doors made on request.

In the master bedroom, a wall composition was realized with matt lacquered finish with leather marquetry, coordinated with the walk-in wardrobe.

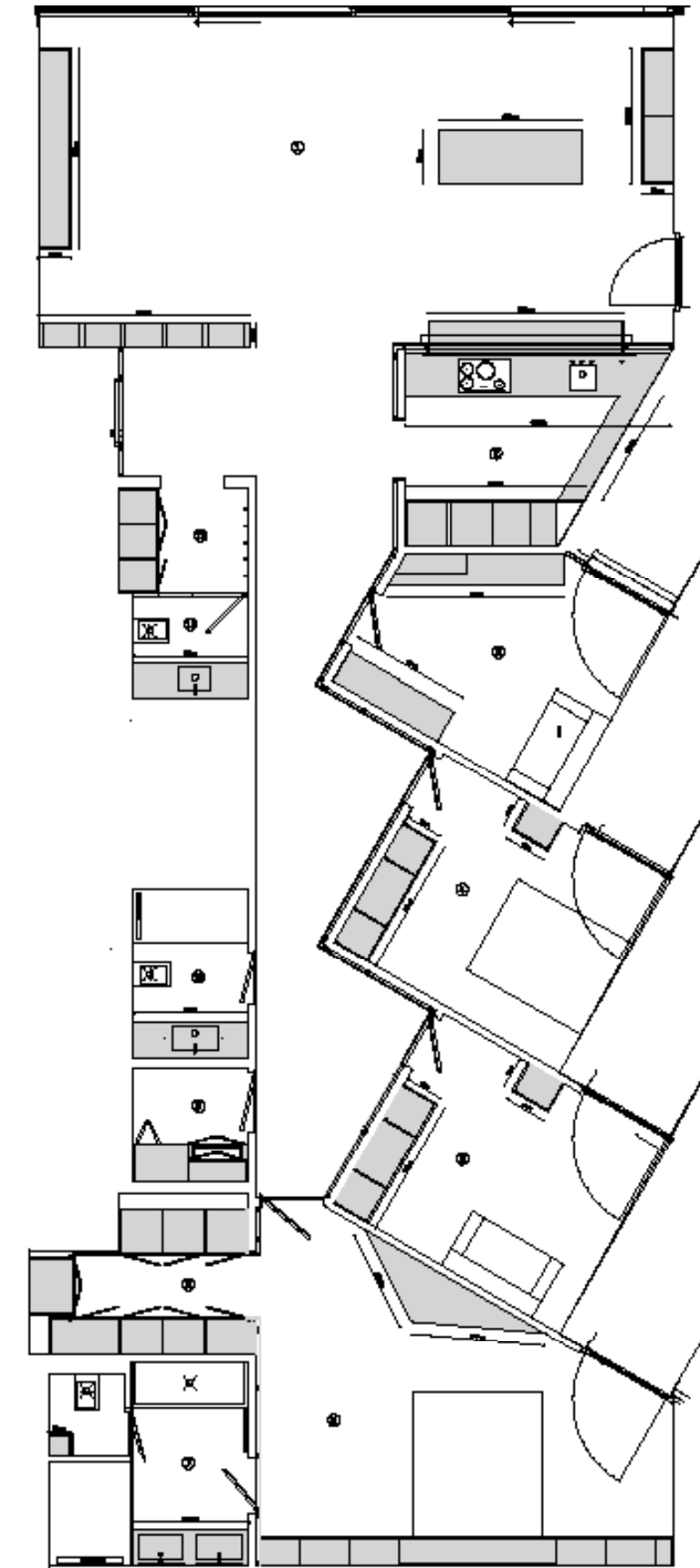
Noce Canaletto wood instead was used for the wardrobes, drawers and a desk in the sleeping area and the office.

In the apartment there are also three bathrooms with custom finishes in frosted glass, metalized copper, Noce Canaletto wood and Taj Mahal and Fusion Wow Dark stone.

© TM Italia 2018. Company with certified Quality Management System in accordance with ISO 9001,
100% Made in Italy manufacturing process, 100% recycled wood panels.

TM Italia s.r.l.

Headquarter: I - 63100 Ascoli Piceno · Via del Fornaio, 24 · T (+39) 0736 815212 · F (+39) 0736 814648
info@tmitalia.com · www.tmitalia.com



1. Living
2. Kitchen
3. Office
4. Guest room
5. Guest room
6. Main bedroom
7. Main bathroom
8. Wardrobe
9. Laundry
10. Bathroom
11. Bathroom
12. Hall

© TM Italia 2018. Company with certified Quality Management System in accordance with ISO 9001,
100% Made in Italy manufacturing process, 100% recycled wood panels.

TM Italia s.r.l.

Headquarter: I - 63100 Ascoli Piceno · Via del Fornaio, 24 · T (+39) 0736 815212 · F (+39) 0736 814648
info@tmitalia.com · www.tmitalia.com

Kitchen with an opening onto living&dining

Special Project for a private client in Locarno

Design: Andrea Laudini

Foto: Matteo Rossi



Overview:

- Location: **Locarno**
- Kitchen surface: **9,5 m²**
- Layout: **linear composition with columns and island with a snack bar opening onto dining&living**
- Columns model: **D90 with outside lacquered handles**
- Bases model: **G180**
- Doors and fronts finish: **personalized NCS S2005-Y50R matt lacquered**
- Paneling: **side kitchen paneling NCS S2005-Y50R matt lacquered**

- Customisation: **island with a snack bar opening onto living&dining area made of metal with Bronzo antico finish; paneling above the island with a built-in aspirator and LED lights; kitchen wall paneling from the living area side NCS S2005-Y50R matt lacquered; upper filler panel with ventilation cut-outs in lacquered solid wood NCS S2005-Y60**

© TM Italia 2018. Company with certified Quality Management System in accordance with ISO 9001, 100% Made in Italy manufacturing process, 100% recycled wood panels.

TM Italia s.r.l.

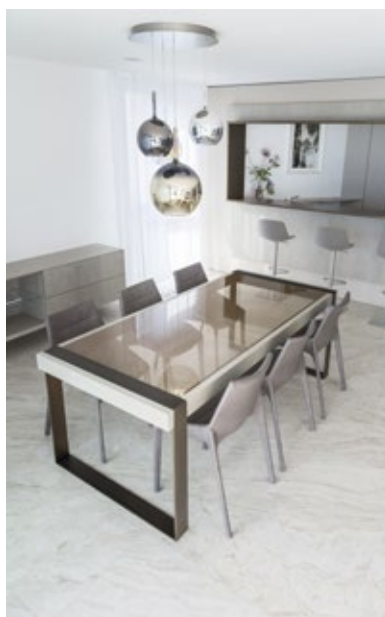
Headquarter: I - 63100 Ascoli Piceno · Via del Fornaio, 24 · T (+39) 0736 815212 · F (+39) 0736 814648
info@tmitalia.com · www.tmitalia.com

Living&Dining area: dividing cabinet, dining table, suspended cabinets

Special Project for a private client in Locarno

Design: Andrea Laudini

Foto: Matteo Rossi



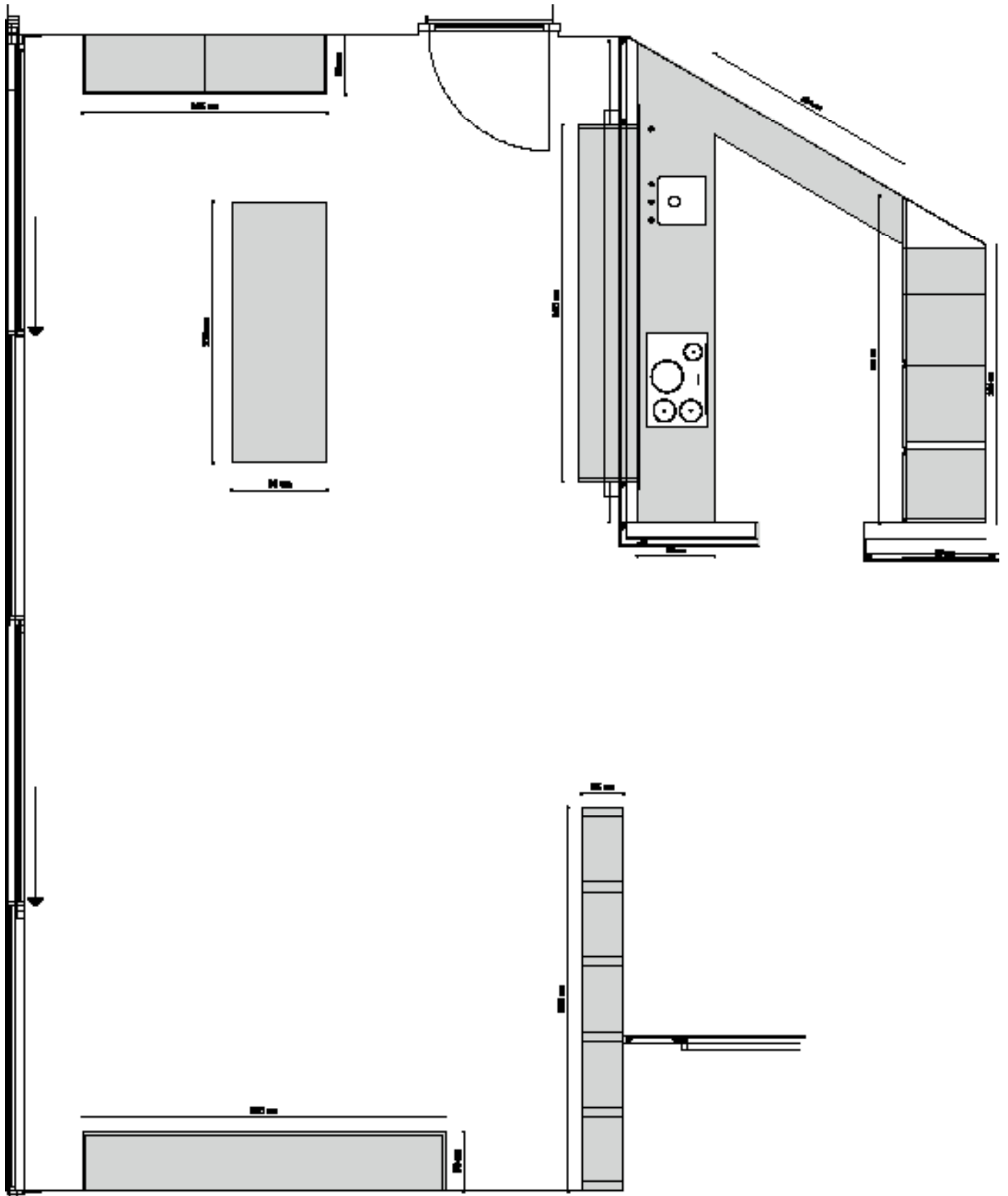
Overview:

- Location: Locarno
- Surface: 49 m²
- Dividing cabinet: composed of 6 vertical panels in Sycamore veneer with metal painted inserts in Bronzo antico, LED lighting of the glass back panel with a metallic copper net
- Dining table: structure of the table made of metal with Bronzo antico finish, top in stratified glass with a metallic net inserted, inserts in wood Sycamore veneer, dimensions: L: 2200 mm, W: 1000 mm, H: 750 mm, the table is completed by an extension in Sycamore veneer with foldable legs in wood
- Suspended cabinet model: T45 EVO in wood essence Sycamore
- Suspended cabinet with 2 push&pull drawers and a LED lit glass shelf
- Suspended cabinet with 3 push&pull drawers and 3 folding doors pantographed and covered in acoustic fabric, the upper compartments are predisposed for internal installation of acoustic system SONOS + Blu Ray, Streamer + Control system

© TM Italia 2018. Company with certified Quality Management System in accordance with ISO 9001, 100% Made in Italy manufacturing process, 100% recycled wood panels.

TM Italia s.r.l.

Headquarter: I - 63100 Ascoli Piceno · Via del Fornaio, 24 · T (+39) 0736 815212 · F (+39) 0736 814648
info@tmitalia.com · www.tmitalia.com



© TM Italia 2018. Company with certified Quality Management System in accordance with ISO 9001,
100% Made in Italy manufacturing process, 100% recycled wood panels.

TM Italia s.r.l.

Headquarter: I - 63100 Ascoli Piceno · Via del Fornaio, 24 · T (+39) 0736 815212 · F (+39) 0736 814648
info@tmitalia.com · www.tmitalia.com

Main bedroom with walk-in wardrobe and bathroom

Special Project for a private client in Locarno

Design: Andrea Laudini

Foto: Matteo Rossi



Main bedroom overview:

- Location: Locarno
- Surface: 35 m²
- Model: D90
- Layout: wall composition and a cabinet with triangular base in Sycamore wood both made on request
- Wall composition: composed of the following units: column, base with drawers, wall units, suspended drawers, flap wall units; NCS S2005-Y50R matt lacquered finish with leather marquetry and LED lights
- Cabinet with triangular base: Sycamore wood, 45° edges with two drawers and 2 flap doors
- Customisation: main bedroom door - outside surface with a mirror, inside surface lacquered with leather marquetry, paneling boiserie in continuity with the bathroom door NCS S2005-Y50R matt lacquered with leather marquetry

Walk-in wardrobe overview:

- Including internal drawers, mirrors, LED lighting of the compartments, hanger rods, all push&pull openings
- Doors finish: NCS S2005-Y50R matt lacquered with leather marquetry
- Structure finish: NCS S2005-Y50R matt lacquered

© TM Italia 2018. Company with certified Quality Management System in accordance with ISO 9001,
100% Made in Italy manufacturing process, 100% recycled wood panels.

TM Italia s.r.l.

Headquarter: I - 63100 Ascoli Piceno · Via del Fornaio, 24 · T (+39) 0736 815212 · F (+39) 0736 814648
info@tmitalia.com · www.tmitalia.com

Main bathroom

Special Project for a private client in Locarno

Design: Andrea Laudini

Foto: Matteo Rossi



Overview:

- Location: Locarno
- Layout: linear bases embedded on a glass wall
- Model: suspended bases with 6 push&pull drawers and 45° edges; mirrors on a structure of personalized colour and lateral LED lights; lacquered top in personalized colour
- Doors and front finish: Extra-clear lacquered glazed glass NCS S2005-Y50R
- Top: Taj Mahal stone

- Customisation: shower partition in stratified glass; door in extra-clear lacquered glazed glass NCS S2005-Y50R; double sink in Taj Mahal stone suspended on the cabinet with assembled basin

© TM Italia 2018. Company with certified Quality Management System in accordance with ISO 9001,
100% Made in Italy manufacturing process, 100% recycled wood panels.

TM Italia s.r.l.

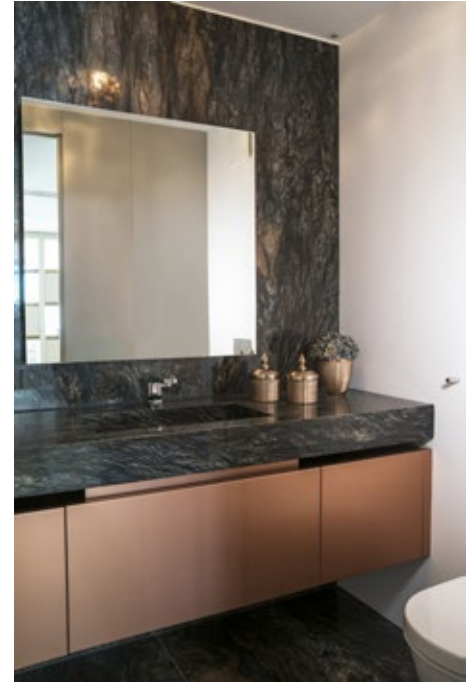
Headquarter: I - 63100 Ascoli Piceno · Via del Fornaio, 24 · T (+39) 0736 815212 · F (+39) 0736 814648
info@tmitalia.com · www.tmitalia.com

Bathrooms

Special Project for a private client in Locarno

Design: Andrea Laudini

Foto: Matteo Rossi



Service bathroom

- Layout: suspended linear embedded cabinet
- Model: 3 drawers, LED backlit wall unit with a mirror
- Doors finish: Noce Canaletto
- Top and wall cladding: Taj Mahal stone

· Customisation: top suspended on the cabinet with assembled basin realized on request

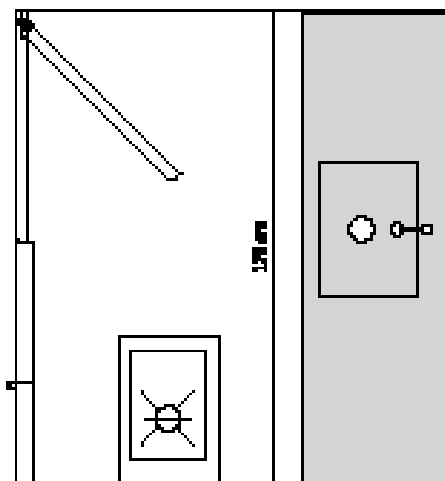
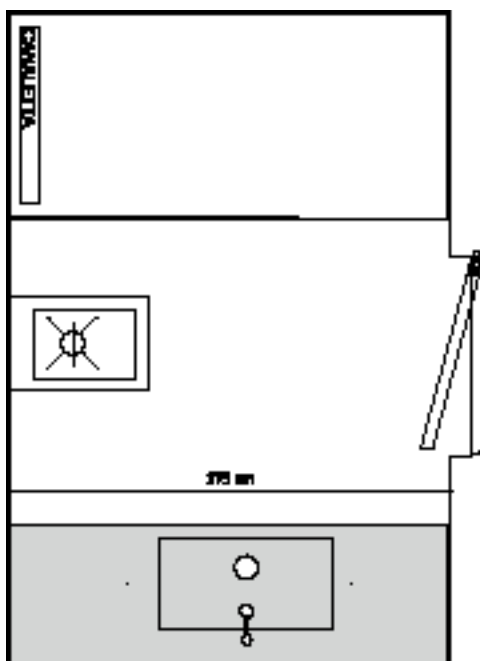
Guest bathroom

- Layout: linear embedded cabinet
- Model: bases with drawers, mirror panel
- Doors finish: metallised VM501 Rame
- Top: Fusion Wow Dark stone

© TM Italia 2018. Company with certified Quality Management System in accordance with ISO 9001,
100% Made in Italy manufacturing process, 100% recycled wood panels.

TM Italia s.r.l.

Headquarter: I - 63100 Ascoli Piceno · Via del Fornaio, 24 · T (+39) 0736 815212 · F (+39) 0736 814648
info@tmitalia.com · www.tmitalia.com

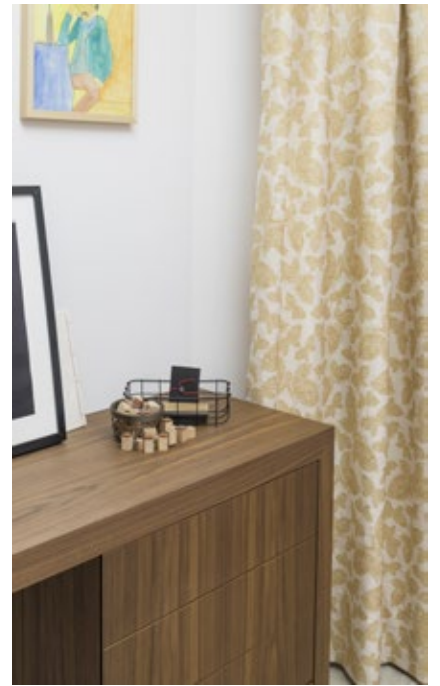
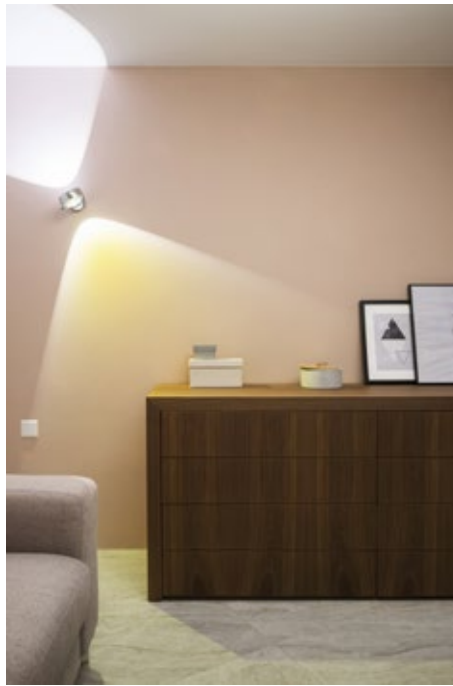


Bedrooms and studio furniture

Special Project for a private client in Locarno

Design: Andrea Laudini

Foto: Matteo Rossi



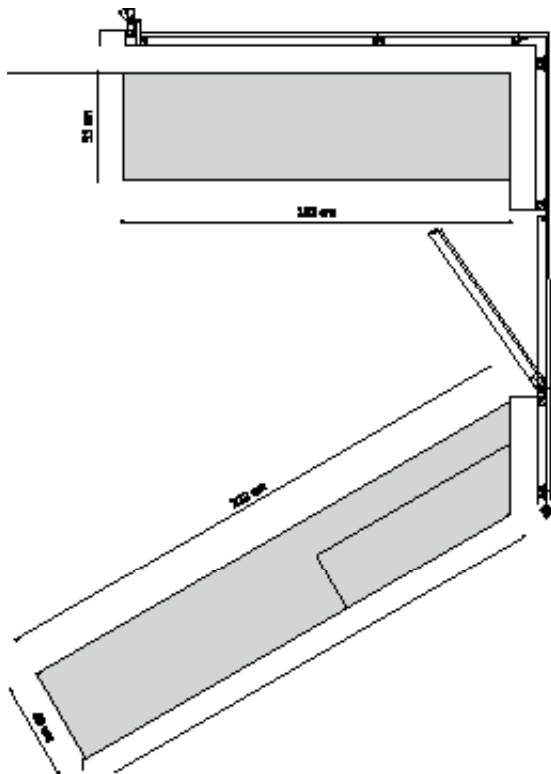
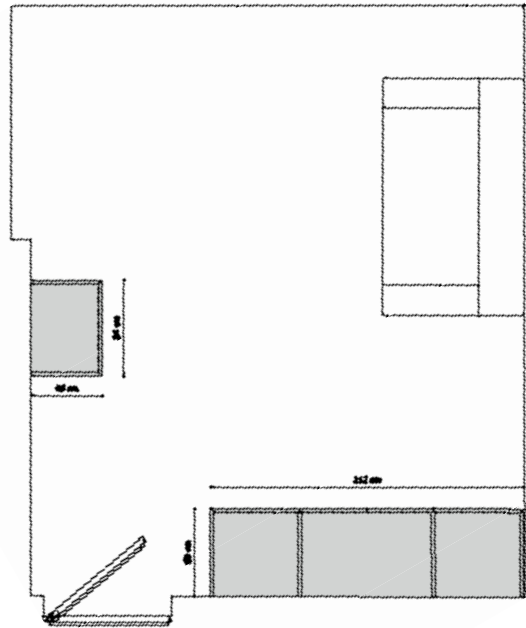
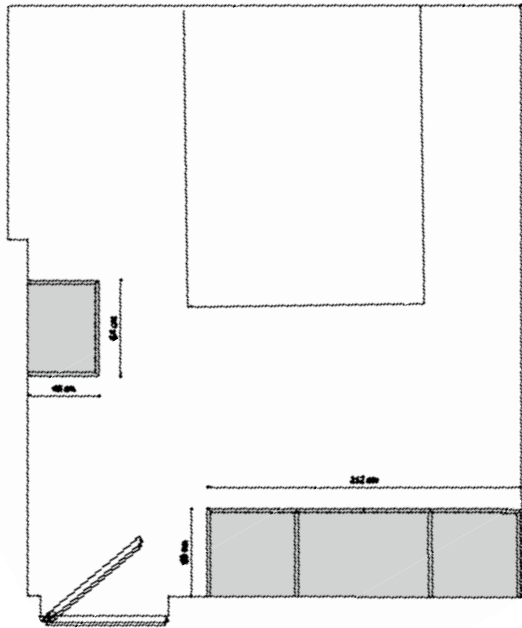
Overview:

- Location: Locarno
- Superficie: 13 m² each
- Furniture: wardrobe with 4 doors, 45° edges, LED lighting with sensors and clothes rail; drawers push&pull; desk + integrated drawers; matt lacquered shelf S1510-Y90R, thickness 40 mm
- Structure finish: Noce Canaletto vertical flame
- Doors finish: Noce Canaletto vertical flame

© TM Italia 2018. Company with certified Quality Management System in accordance with ISO 9001, 100% Made in Italy manufacturing process, 100% recycled wood panels.

TM Italia s.r.l.

Headquarter: I - 63100 Ascoli Piceno · Via del Fornaio, 24 · T (+39) 0736 815212 · F (+39) 0736 814648
info@tmitalia.com · www.tmitalia.com



© TM Italia 2018. Company with certified Quality Management System in accordance with ISO 9001,
100% Made in Italy manufacturing process, 100% recycled wood panels.

TM Italia s.r.l.

Headquarter: I - 63100 Ascoli Piceno · Via del Fornaio, 24 · T (+39) 0736 815212 · F (+39) 0736 814648
info@tmitalia.com · www.tmitalia.com