

NOTA

No que diz respeito ao alçado principal (Poente), a estratégia geral é a de um restauro estrito das condições originais do prédio, quer no que diz respeito à caixilharia em madeira, quer à serralharia, quer ao telhado e respectivo beiral.

Excepcionalmente (no sentido de adequar o prédio aos usos contemporâneos) propomos caixilharia em ferro para os vãos do rés do chão (promovendo uma relação mais transparente com a luz e com a rua) e caixas de visita (36x47cm) dissimuladas para os contadores dos serviços públicos.

No alçado posterior (Nascente) mantém-se intacta a estrutura de vãos, propondo-se apenas a introdução de caixilharia em ferro (procurando contrariar a opacidade desta fachada) e a instalação de uma leve plataforma, com estrutura metálica, permitindo uma relação mais directa com um interior de quarto apetecível e qualificado.

1h/₂₄
NOVEMBRO 2012

REQUALIFICAÇÃO
DOM FREI CAETANO BRANDÃO, BRAGA

ALÇADOS POENTE (PRINCIPAL) E NASCENTE

ESCALA 1/50

RS03



TIAGO DO VALE ARQUITECTOS

WWW.TIAGODOVALE.COM



REQUALIFICAÇÃO
DOM FREI CAETANO BRANDÃO, BRAGA

ALÇADO POENTE (PRINCIPAL), ESTUDO DE COR

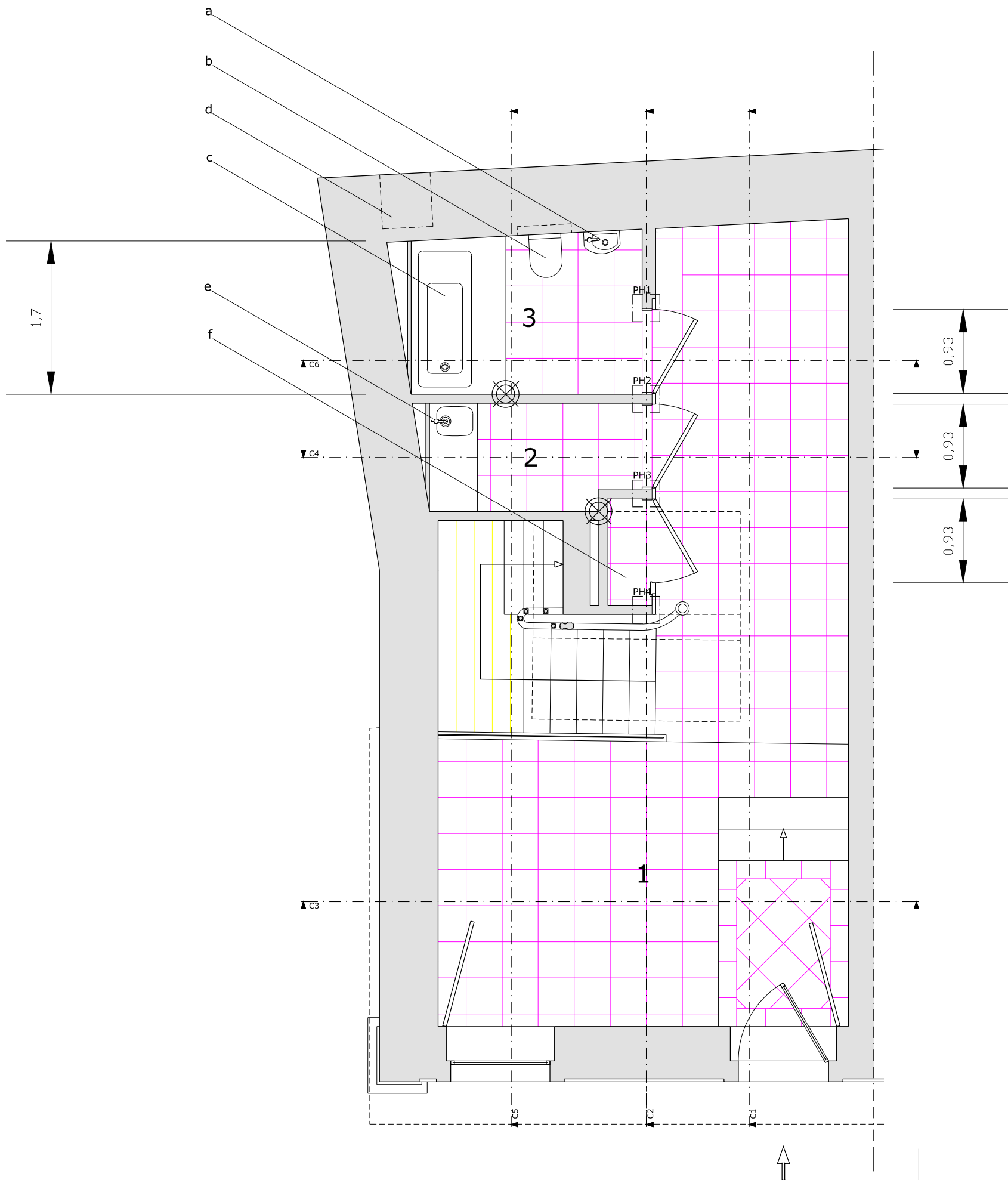
ESCALA 1/50

RS03

 TIAGO DO VALE ARQUITECTOS

WWW.TIAGODOVALE.COM

21/24
MARÇO 2013



- 1 chegada
- 2 lavandaria
- 3 instalação sanitária

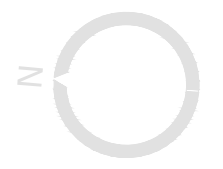
- a lavatório sanindusa city 40x25
- b sanita suspensa sanindusa city
- c banheira sanindusa vértice 1700x750
- d ventilação inferior
- e lava roupa sanindusa riba 40
- f quadro eléctrico/telecomunicações
- g máquina lavar roupa
- h máquina secar roupa

MÁRMORE DE ESTREMOZ
 estimativa

10-12mm
 40x40cm 52m²

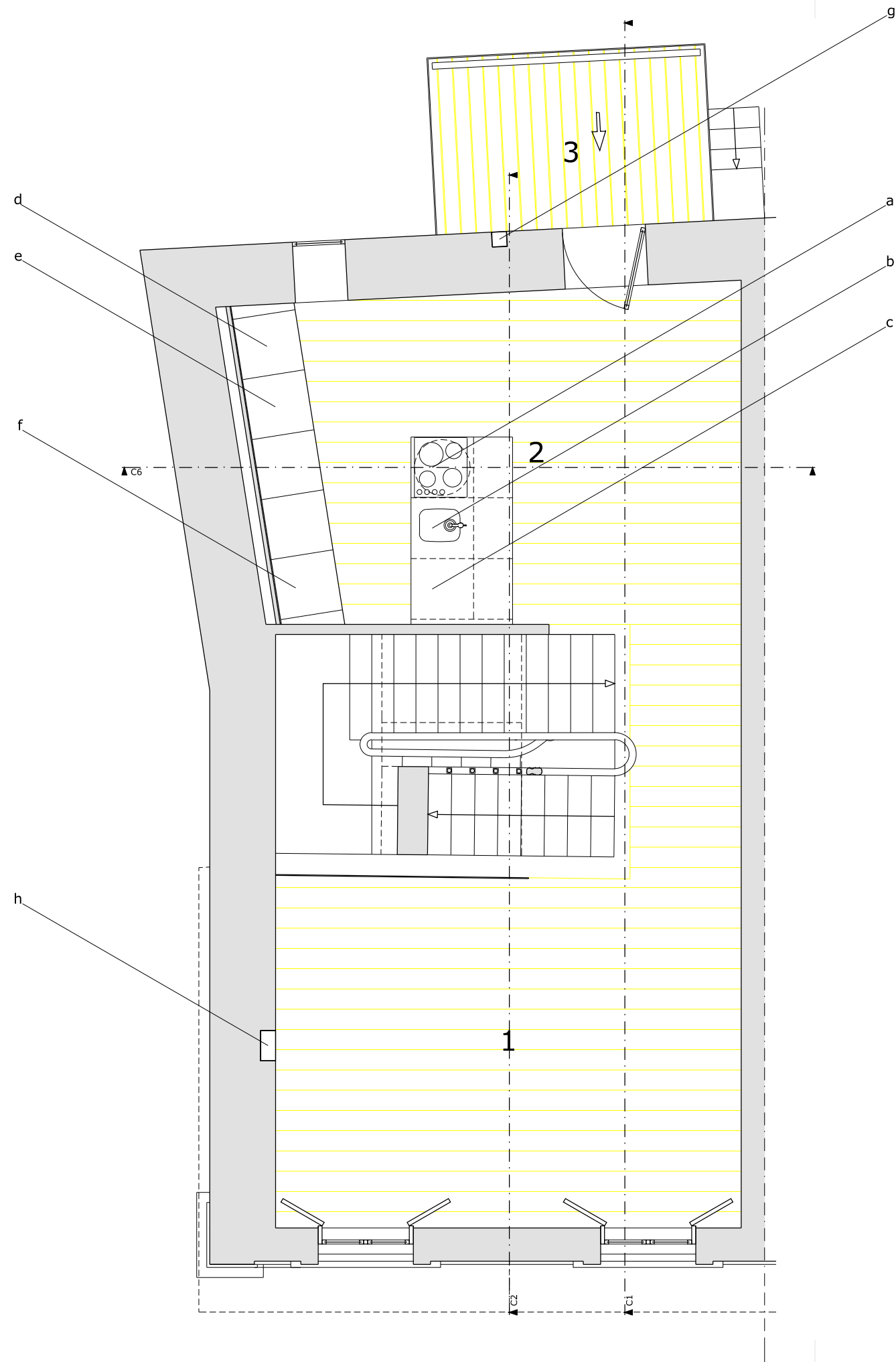
40mm
 balcão 185x100mm
 banheira (irregular)
 balcão lavandaria

3f/24
 MARÇO 2013



REQUALIFICAÇÃO
 DOM FREI CAETANO BRANDÃO, BRAGA
 PLANTA RÉS DO CHÃO

ESCALA 1/50
 RS03



- 1 sala
- 2 cozinha
- 3 plataforma de acesso

- a fogão/exaustor
- b lava-loiça
- c máquina de lavar loiça
- d frigorífico
- e forno/micro-ondas
- f esquentador a gás
- g ponto de água com porta de visita
- h ponto de água e esgoto

4e/24
OUTUBRO 2012

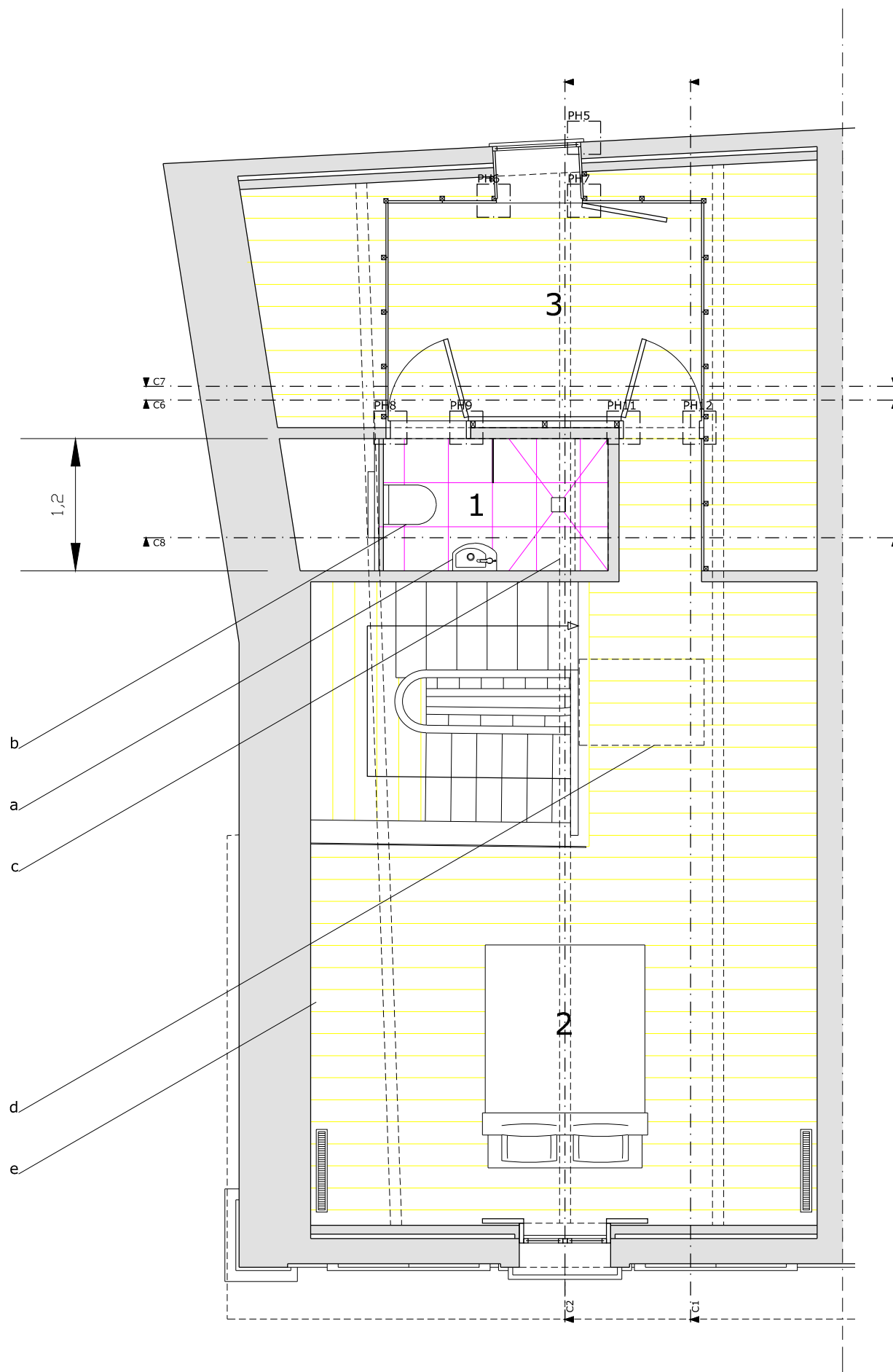


REQUALIFICAÇÃO
 DOM FREI CAETANO BRANDÃO, BRAGA
 PLANTA PRIMEIRO PISO

ESCALA 1/50
 RS03

TIAGO DO VALE ARQUITECTOS

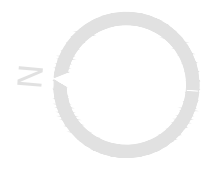
WWW.TIAGODOVALE.COM



- 1 instalação sanitária
- 2 quarto
- 3 quarto de vestir

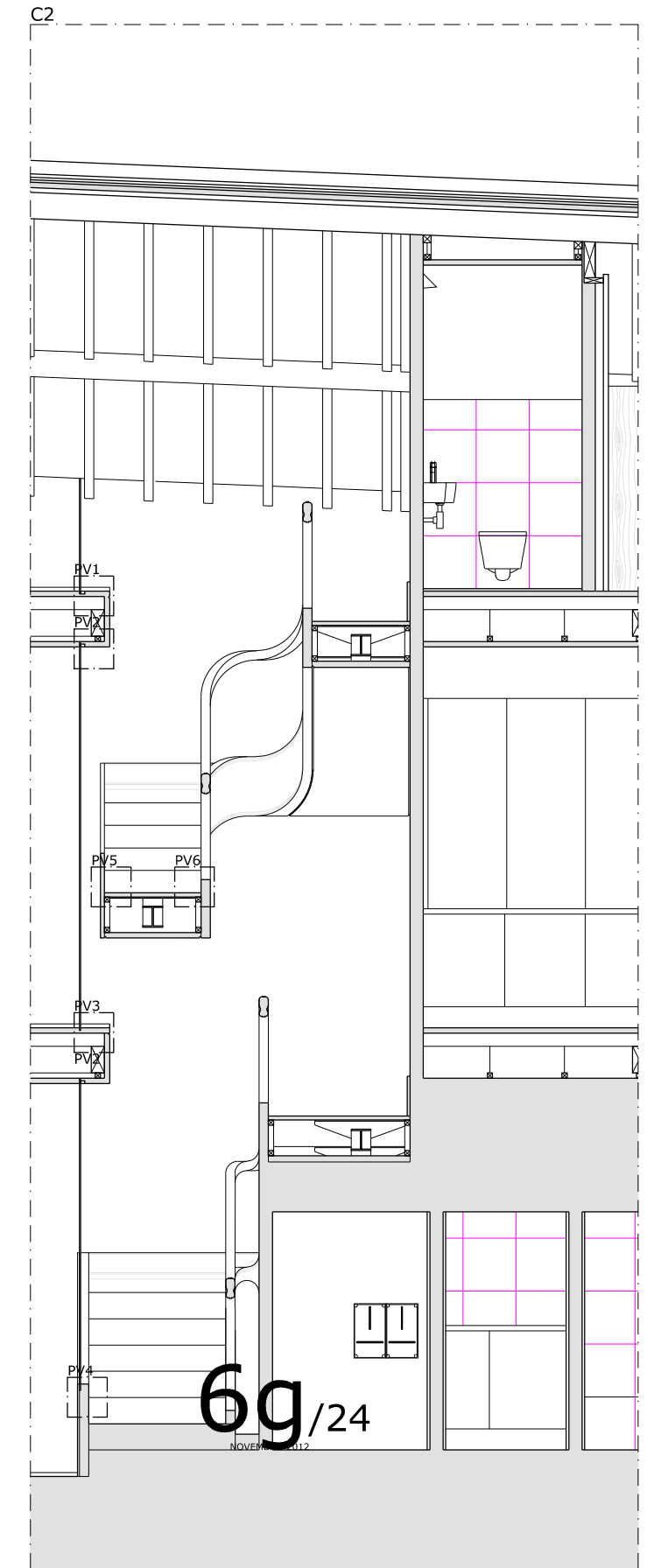
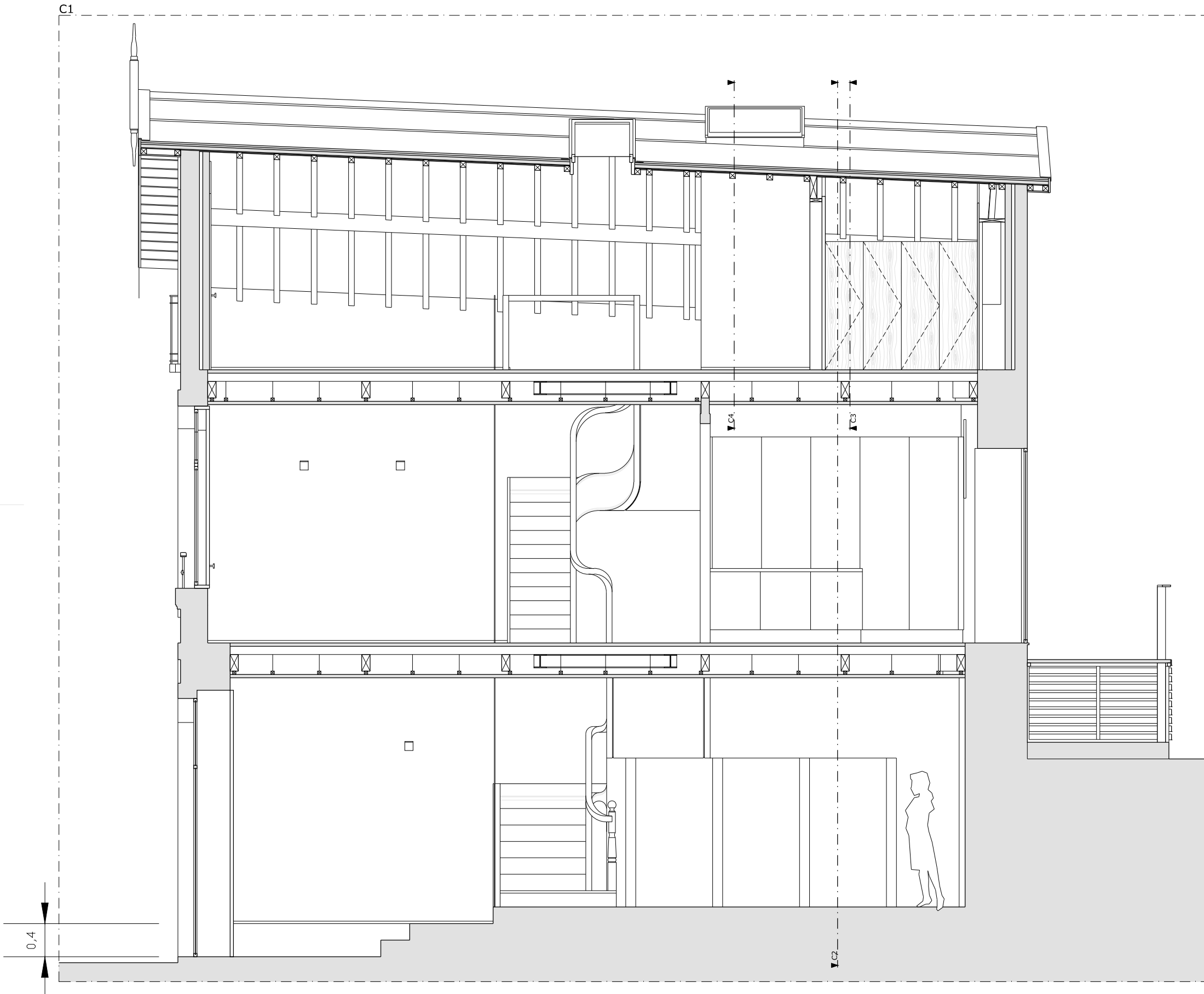
- a lavatório sanindusa city 40x25
- b sanita suspensa sanindusa city
- c painel oli x-center 1200x900
- d janela velux GGL 78x140
- e saída inferior de a/c

5h₂₄
MARÇO 2013



REQUALIFICAÇÃO
DOM FREI CAETANO BRANDÃO, BRAGA
PLANTA ÁGUAS FURTADAS

ESCALA 1/50
RS03



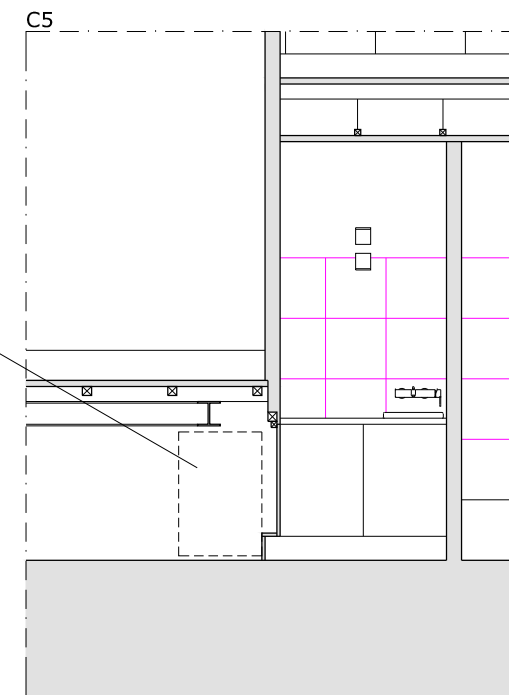
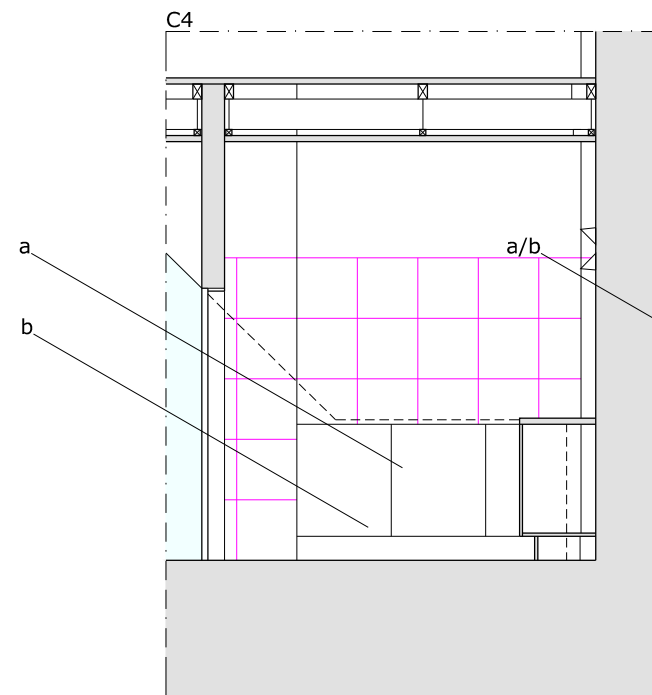
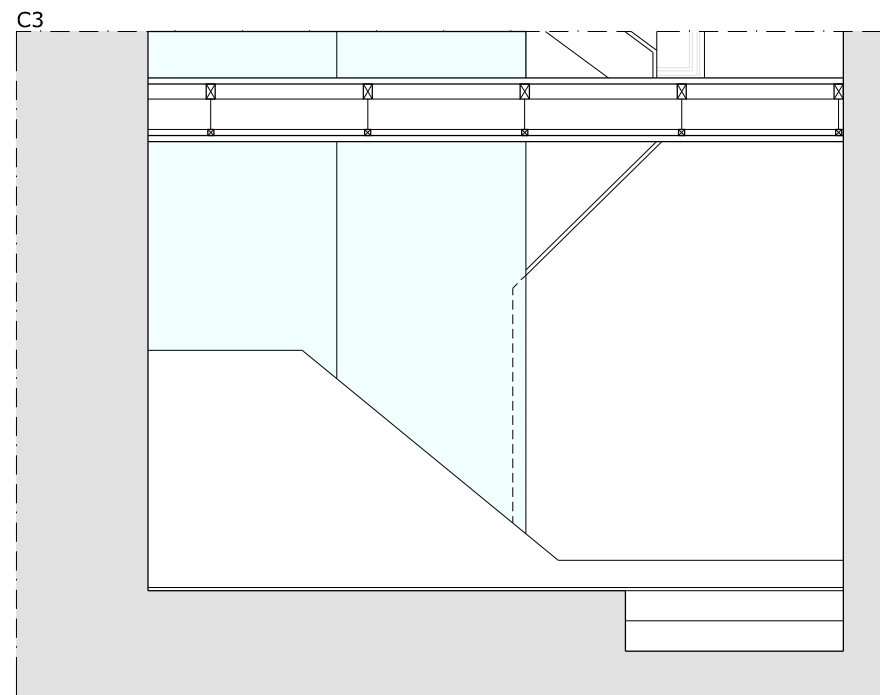
REQUALIFICAÇÃO
DOM FREI CAETANO BRANDÃO, BRAGA
CORTES C1, C2

ESCALA 1/50
RS03

TIAGO DO VALE ARQUITECTOS

WWW.TIAGODOVALE.COM

6g/24
NOVEMBRO 2012



a máquina lavar roupa
 b máquina secar roupa

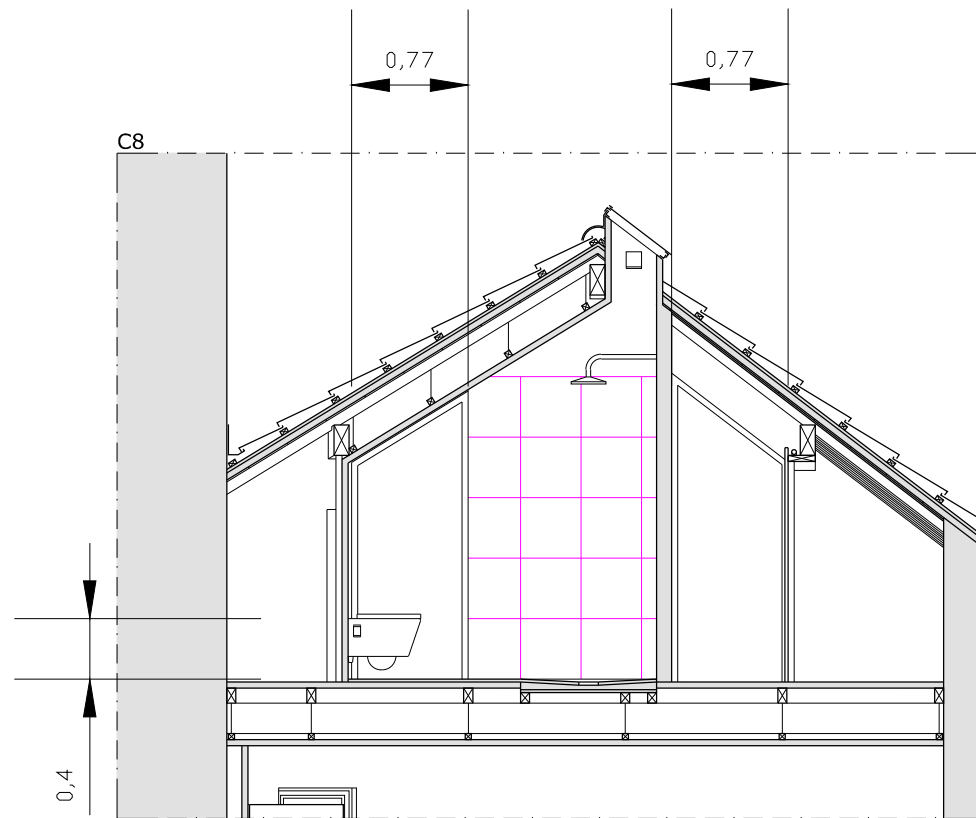
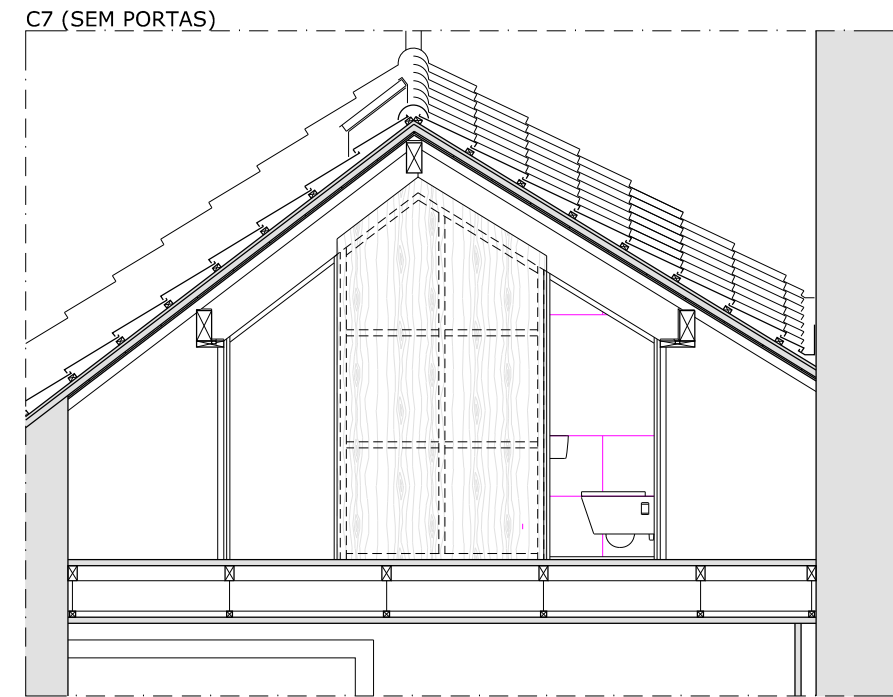
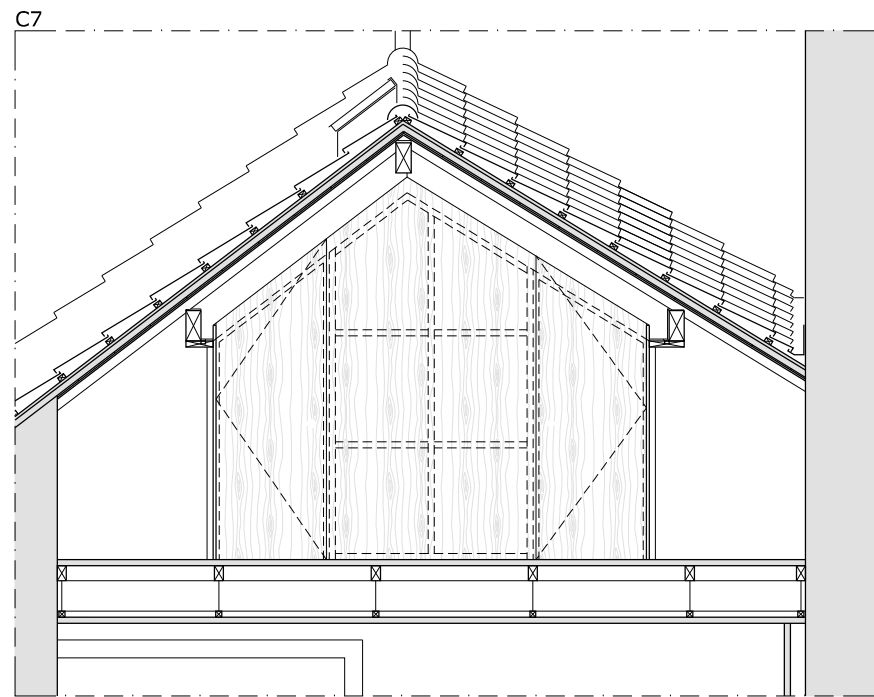
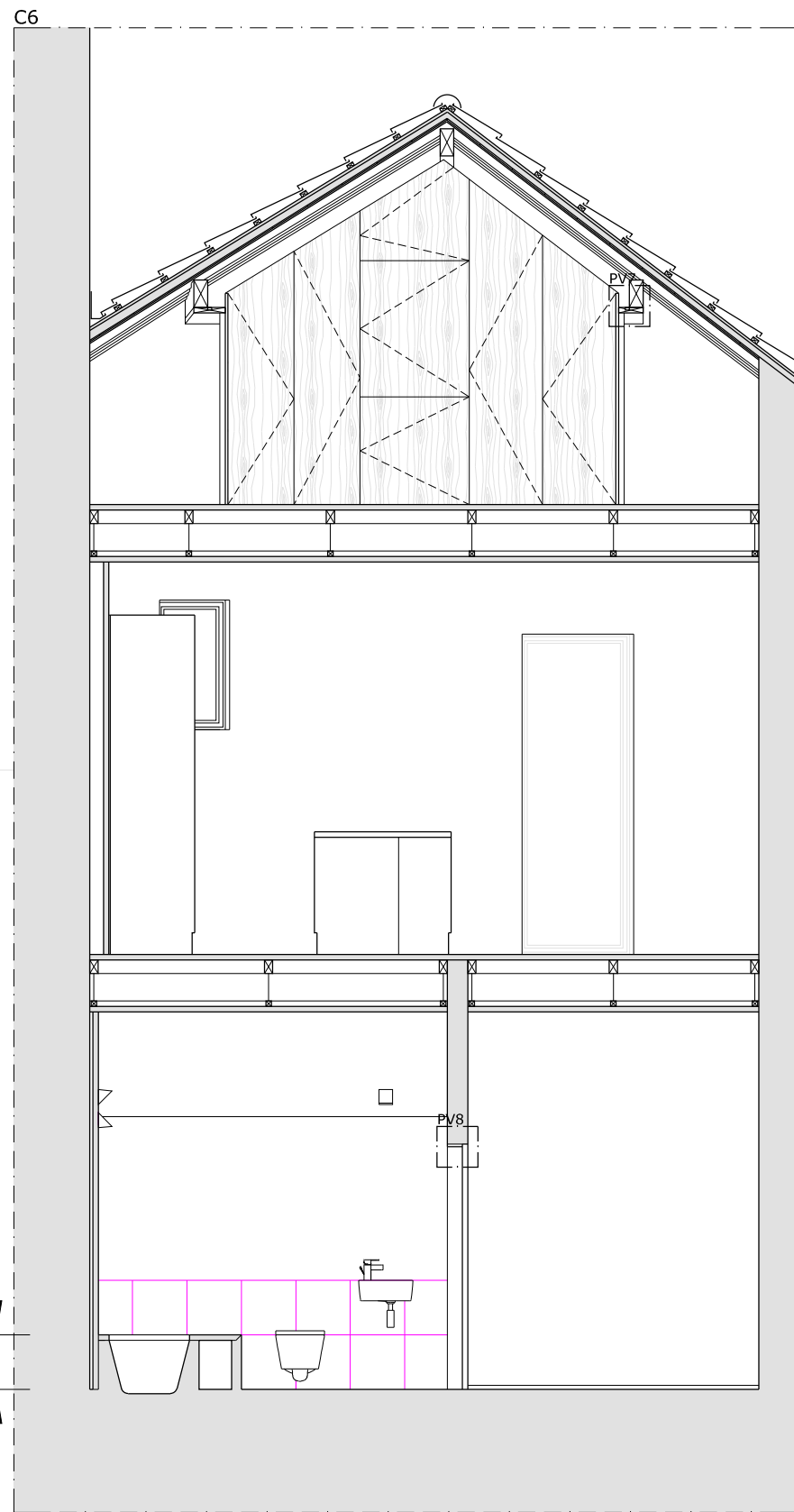
7e/24
 NOVEMBRO 2012

REQUALIFICAÇÃO
 DOM FREI CAETANO BRANDÃO, BRAGA
 CORTES C3, C4, C5

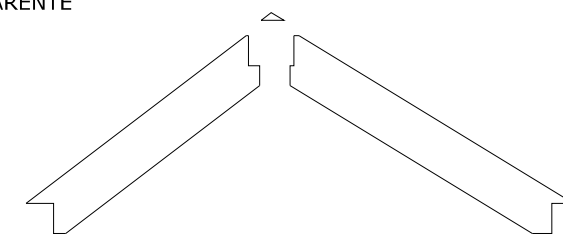
ESCALA 1/50
 RS03

TIAGO DO VALE ARQUITECTOS

WWW.TIAGODOVALE.COM



"VIGA" APARENTE



8e/24
NOVEMBRO 2012

REQUALIFICAÇÃO
DOM FREI CAETANO BRANDÃO, BRAGA
CORTES C6, C7, C8

ESCALA 1/50
RS03

TIAGO DO VALE ARQUITECTOS

WWW.TIAGODOVALE.COM



9c/24
AGOSTO 2012

REQUALIFICAÇÃO
DOM FREI CAETANO BRANDÃO, BRAGA

PORTADAS RÉS DO CHÃO (ALÇADO EXTERIOR)

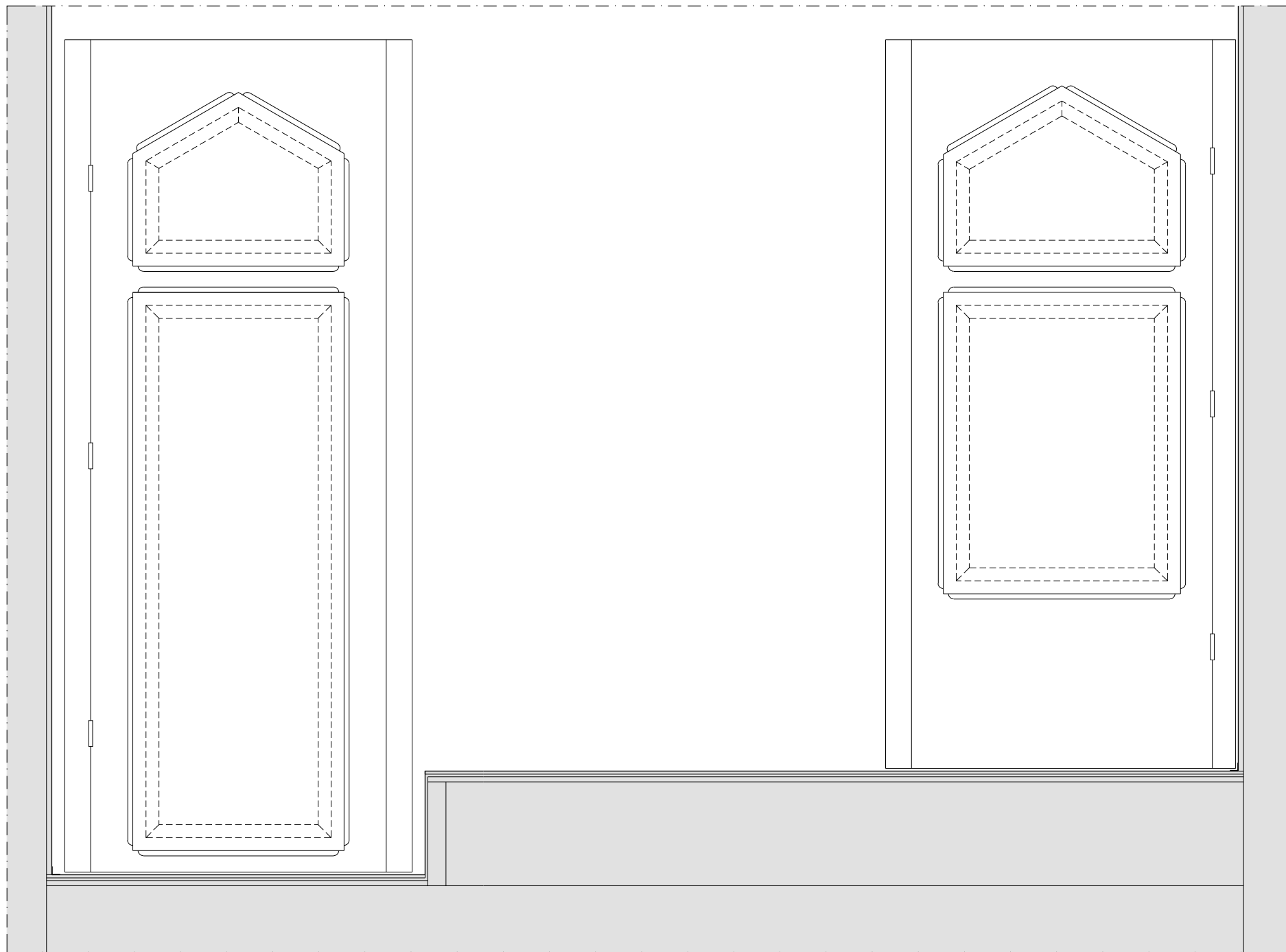
ESCALA 1/20

RS03



TIAGO DO VALE ARQUITECTOS

WWW.TIAGODOVALE.COM



10d_{/24}
NOVEMBRO 2012

REQUALIFICAÇÃO
DOM FREI CAETANO BRANDÃO, BRAGA

PORTADAS RÉIS DO CHÃO (ALÇADO INTERIOR)

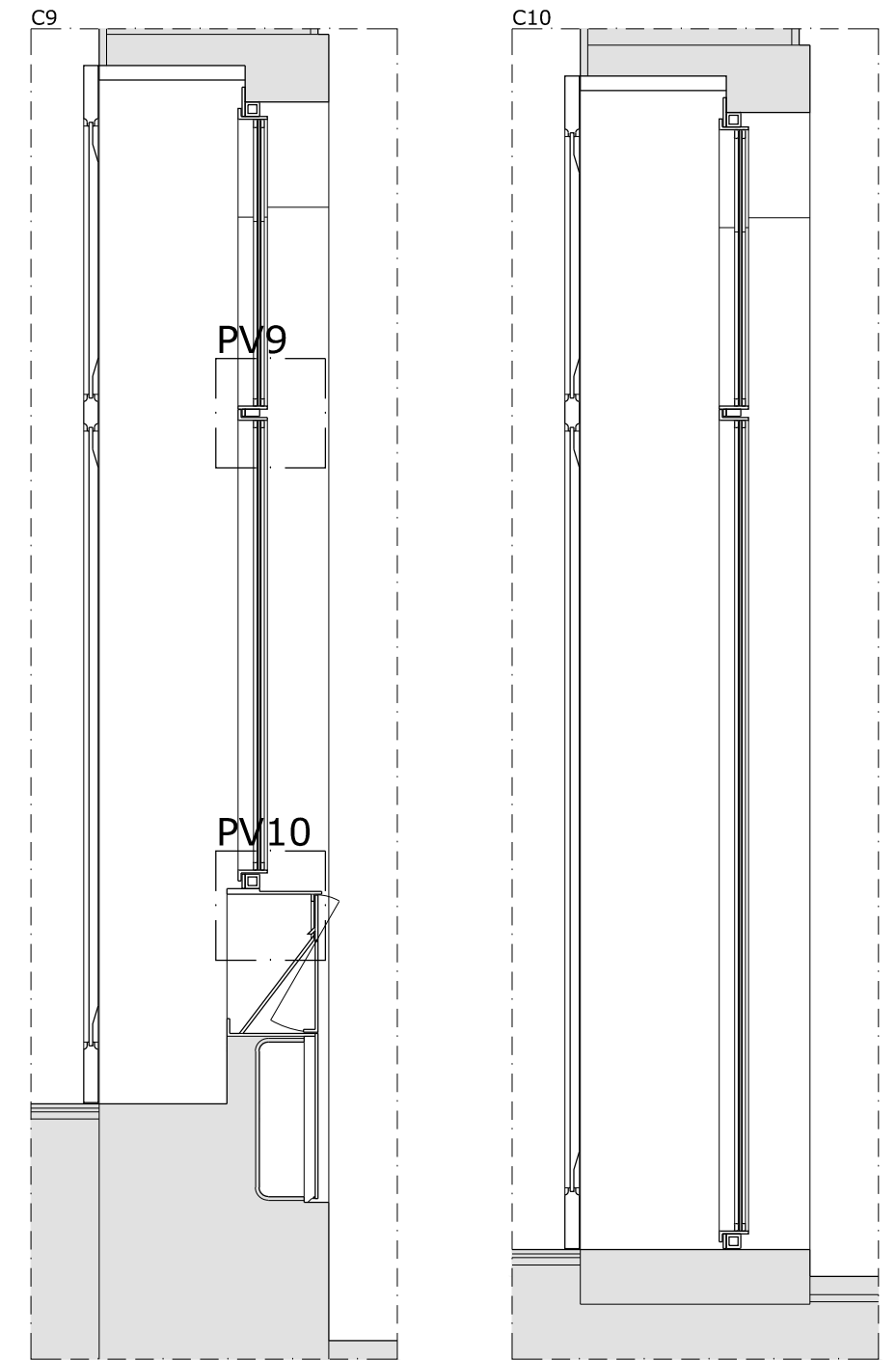
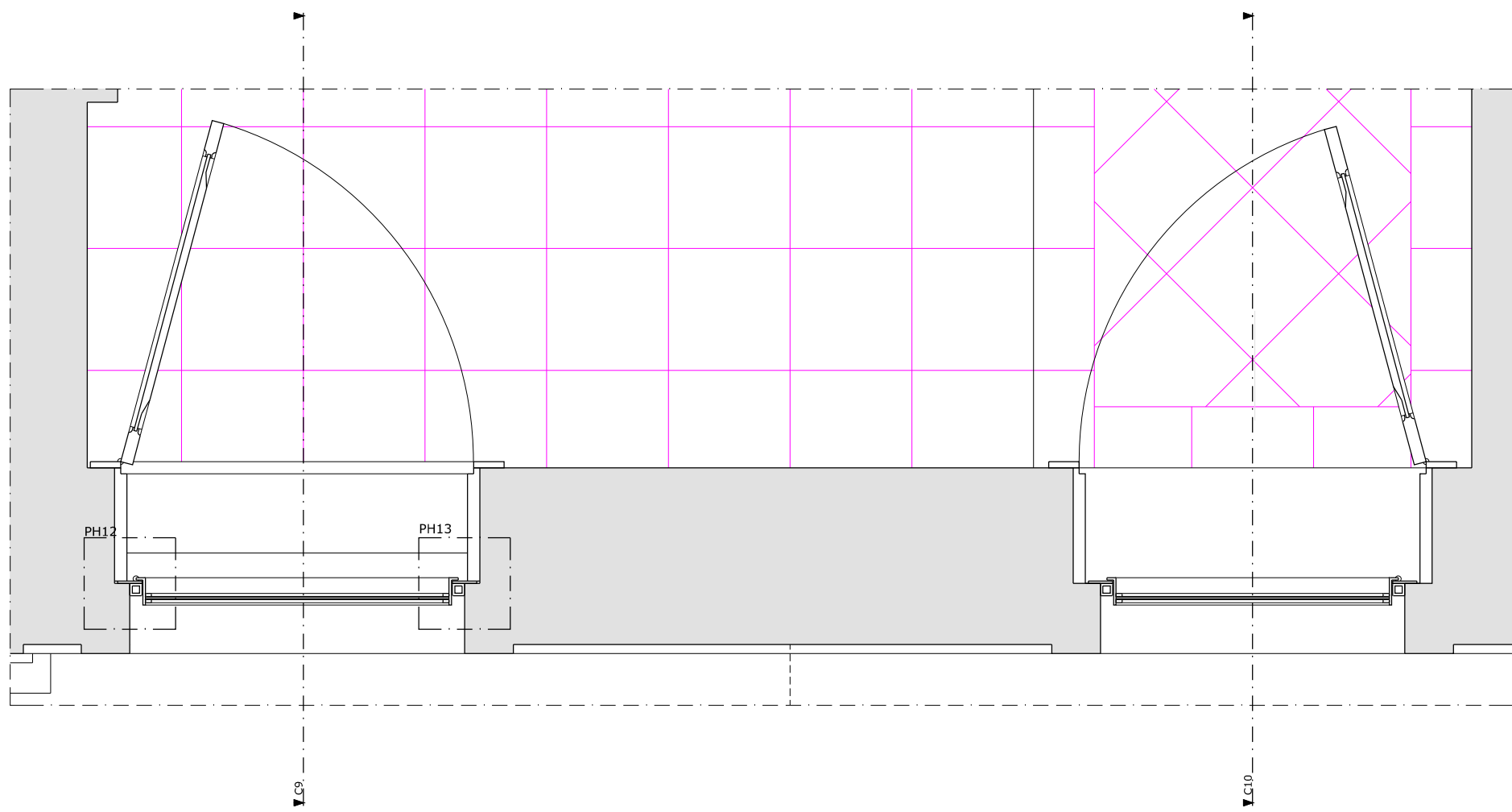
ESCALA 1/20

RS03



TIAGO DO VALE ARQUITECTOS

WWW.TIAGODOVALE.COM



11d/₂₄
SETEMBRO 2012



REQUALIFICAÇÃO
 DOM FREI CAETANO BRANDÃO, BRAGA

ESCALA 1/20

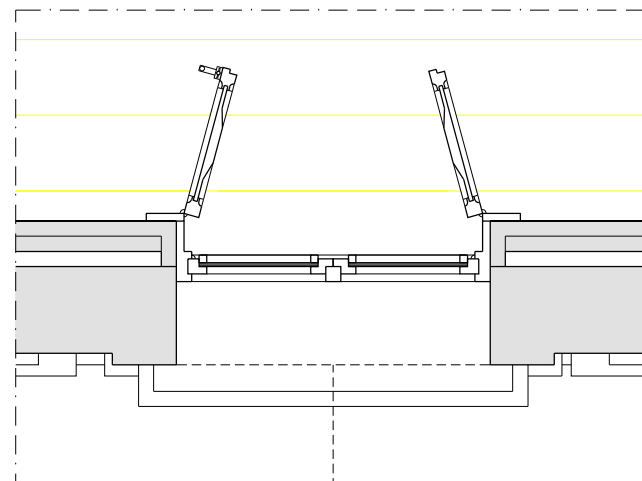
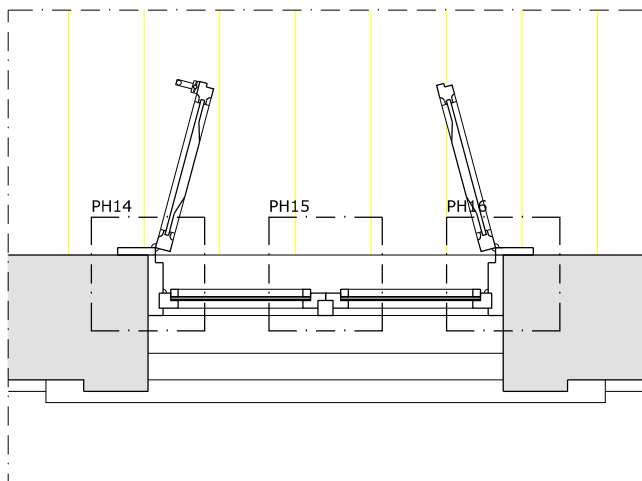
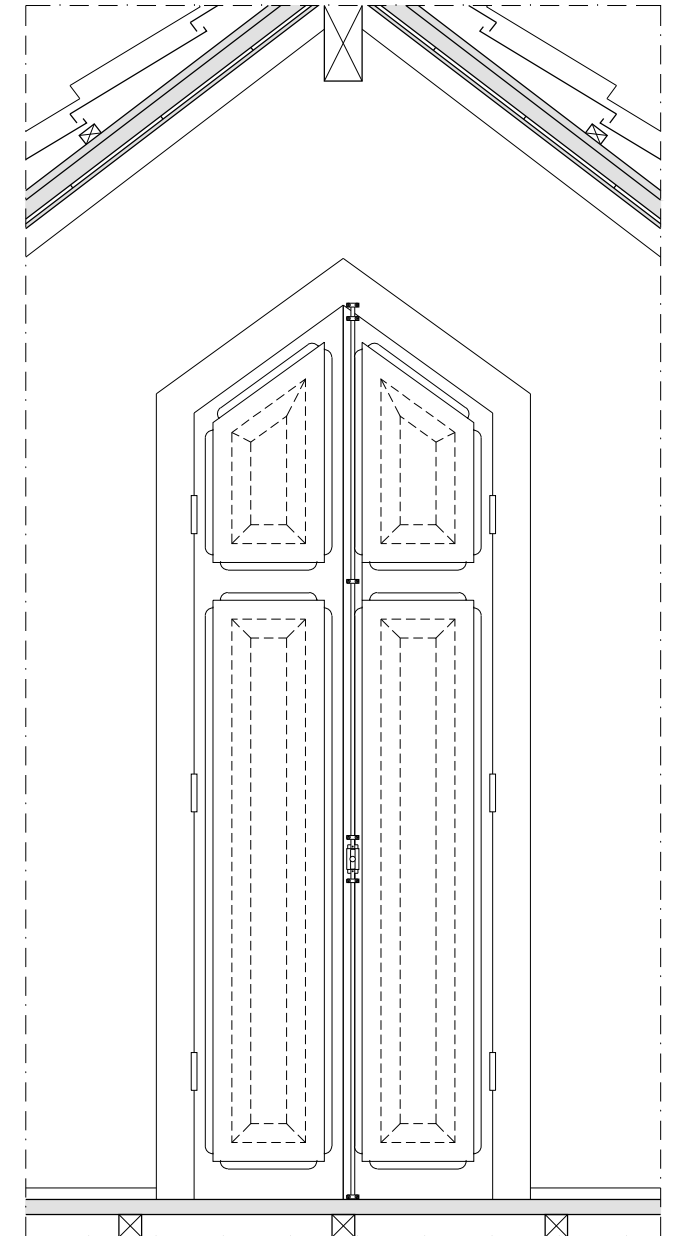
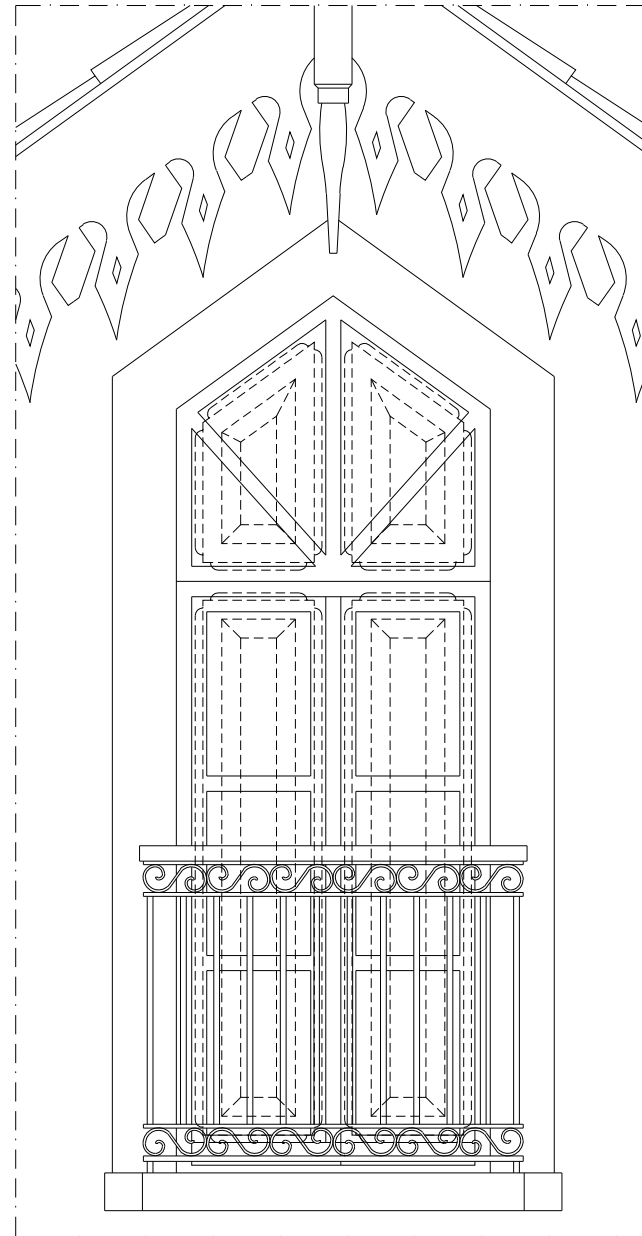
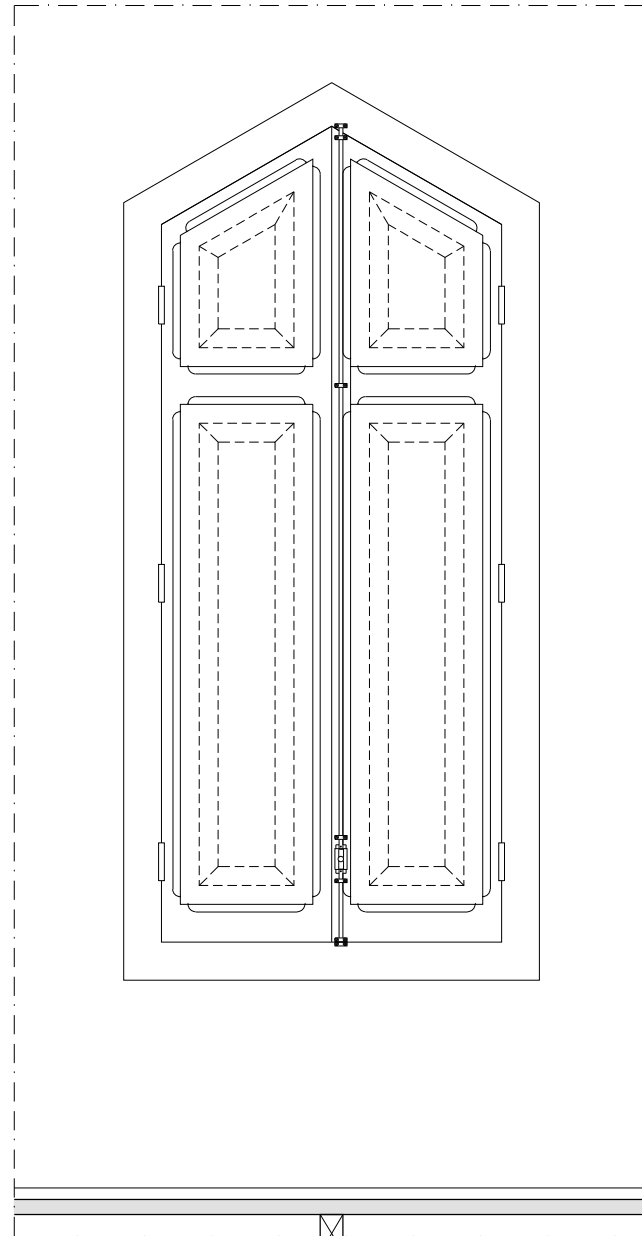
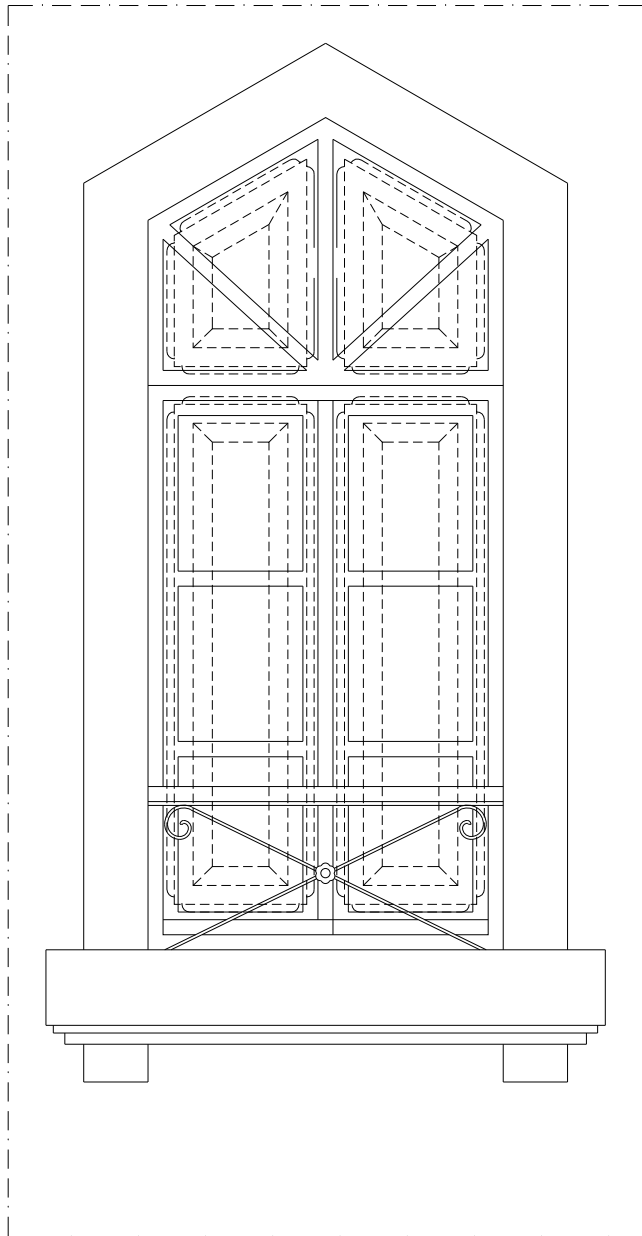
PORTADAS RÉS DO CHÃO (PLANTA E CORTES)

RS03



TIAGO DO VALE ARQUITECTOS

WWW.TIAGODOVALE.COM



12C/24
AGOSTO 2012



REQUALIFICAÇÃO
DOM FREI CAETANO BRANDÃO, BRAGA

PORTADAS PRIMEIRO PISO E ÁGUAS FURTADAS

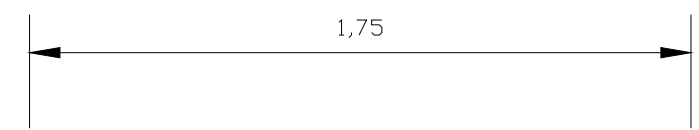
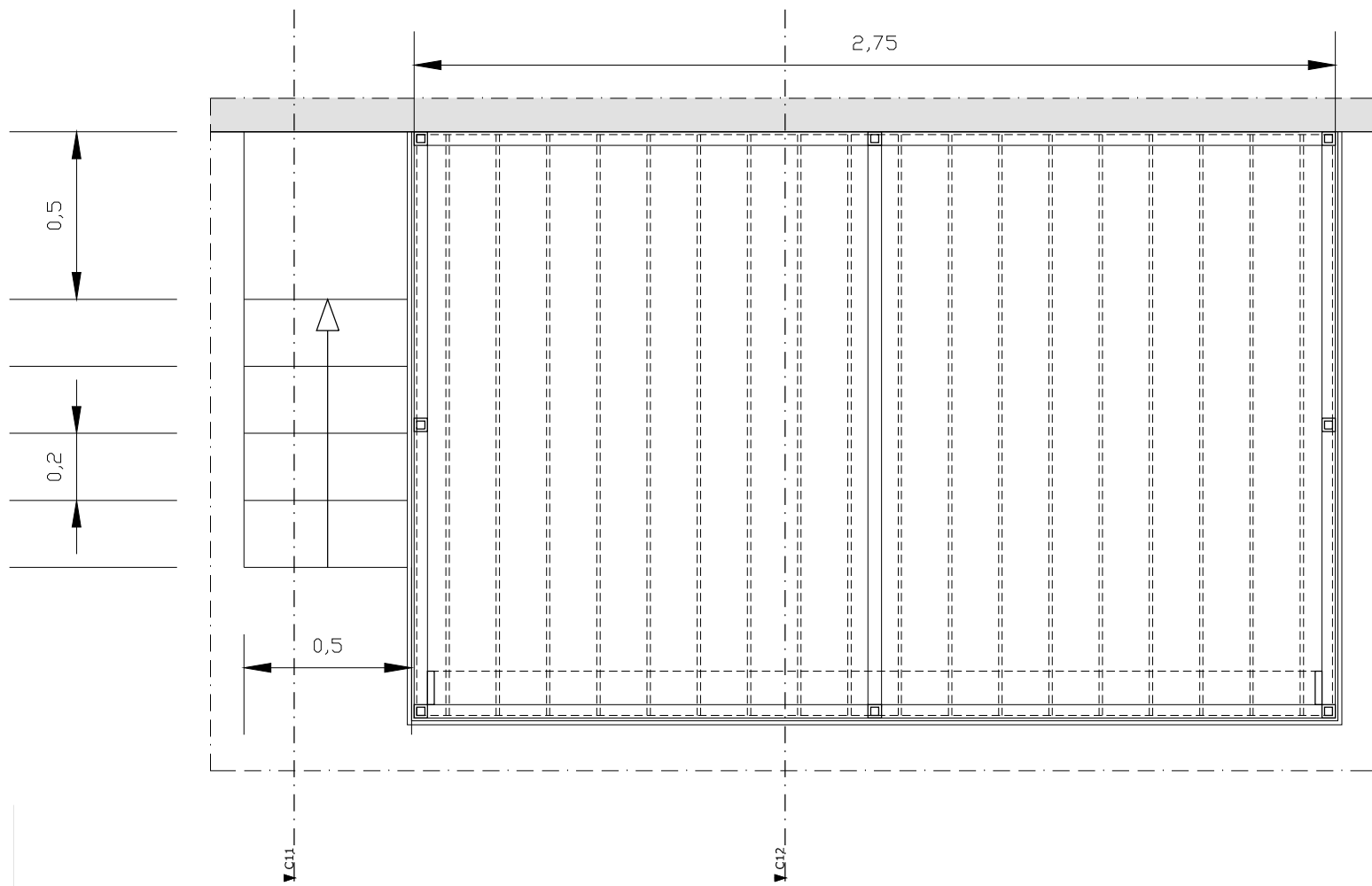
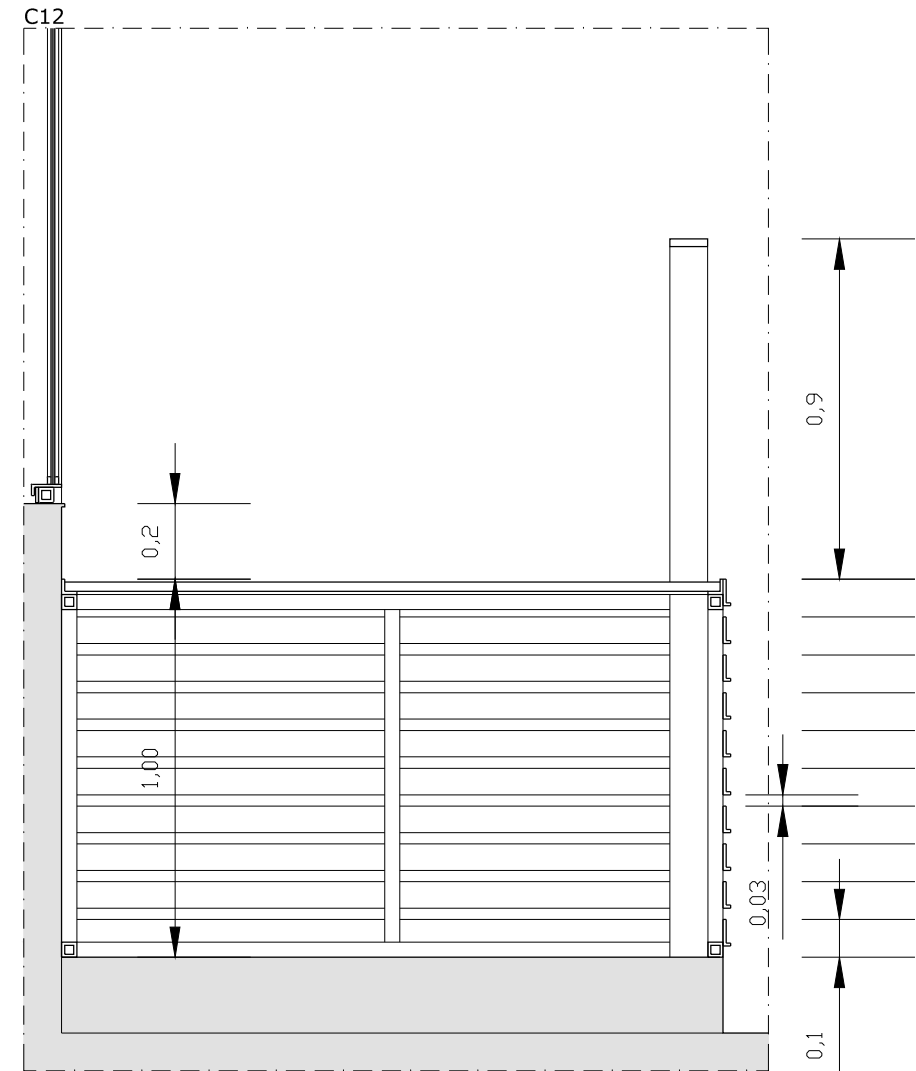
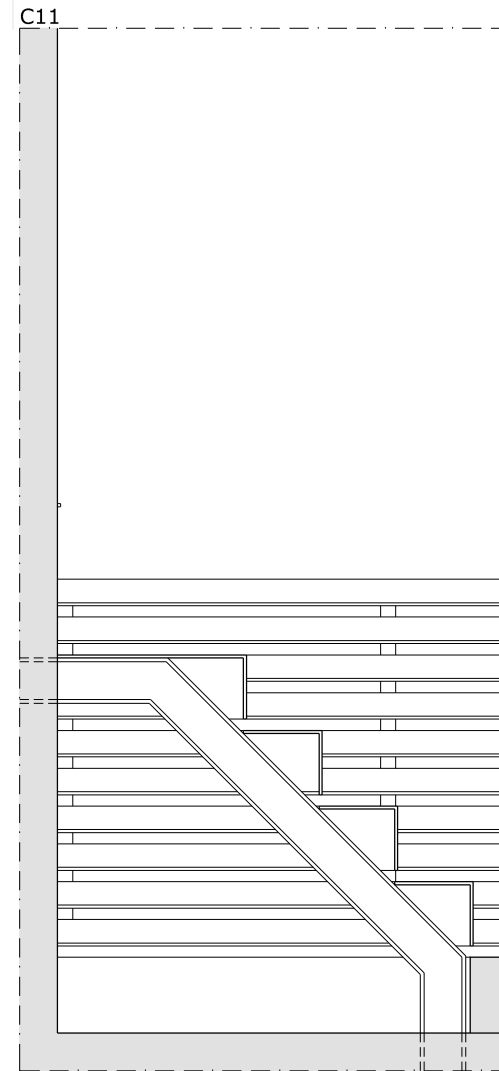
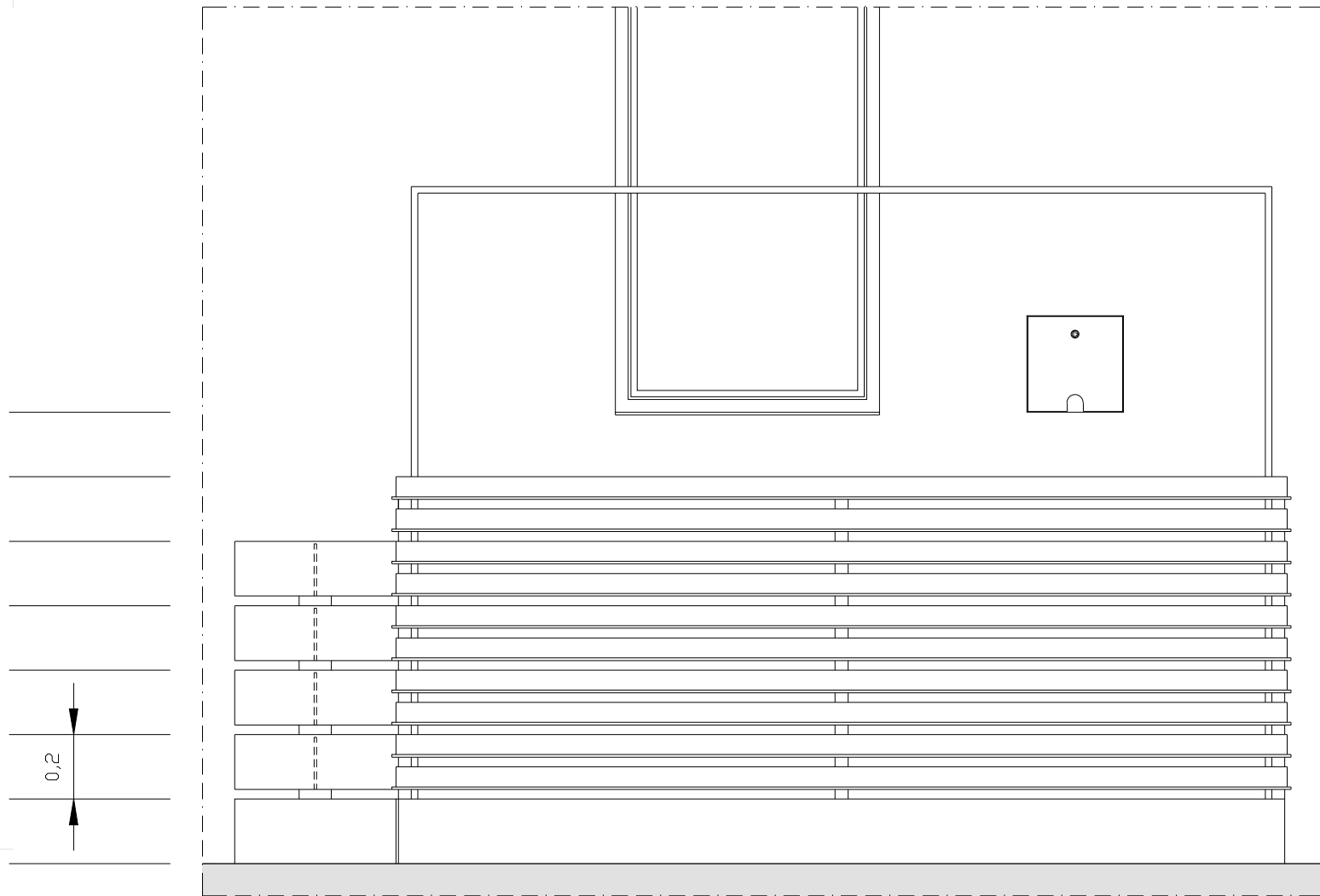
ESCALA 1/20

RS03



TIAGO DO VALE ARQUITECTOS

WWW.TIAGODOVALE.COM



13b/24
NOVEMBRO 2012



REQUALIFICAÇÃO
DOM FREI CAETANO BRANDÃO, BRAGA

PLATAFORMA DE ACESSO NASCENTE

ESCALA 1/20

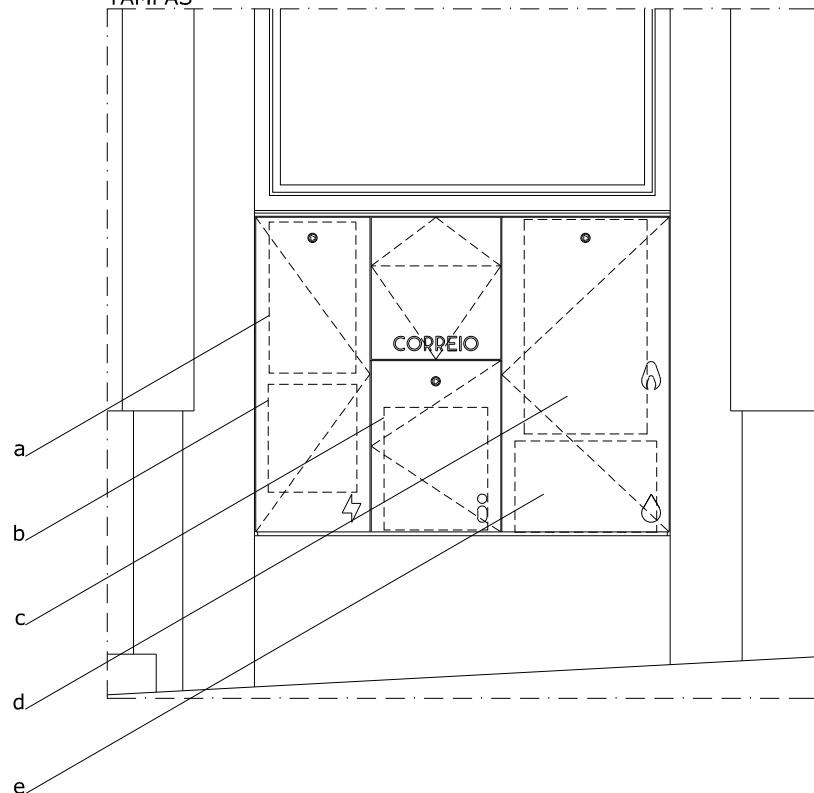
RS03



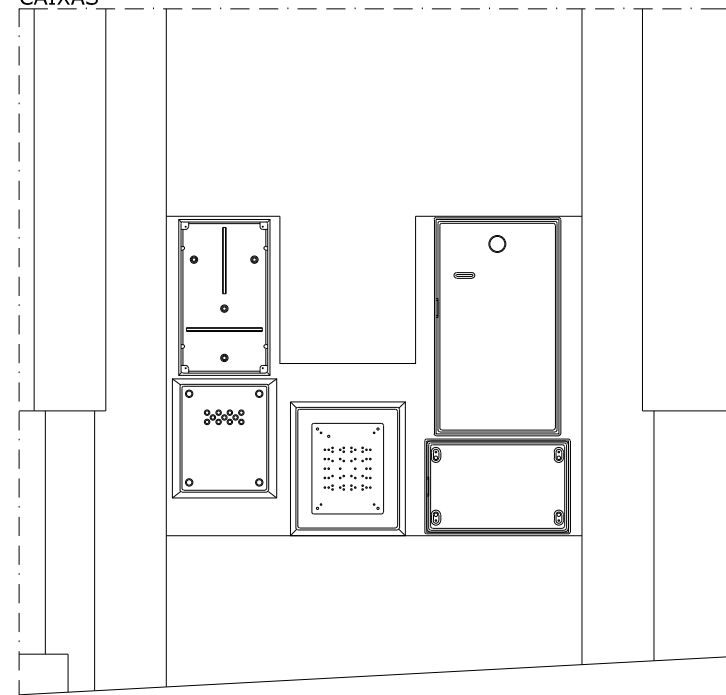
TIAGO DO VALE ARQUITECTOS

WWW.TIAGODOVALE.COM

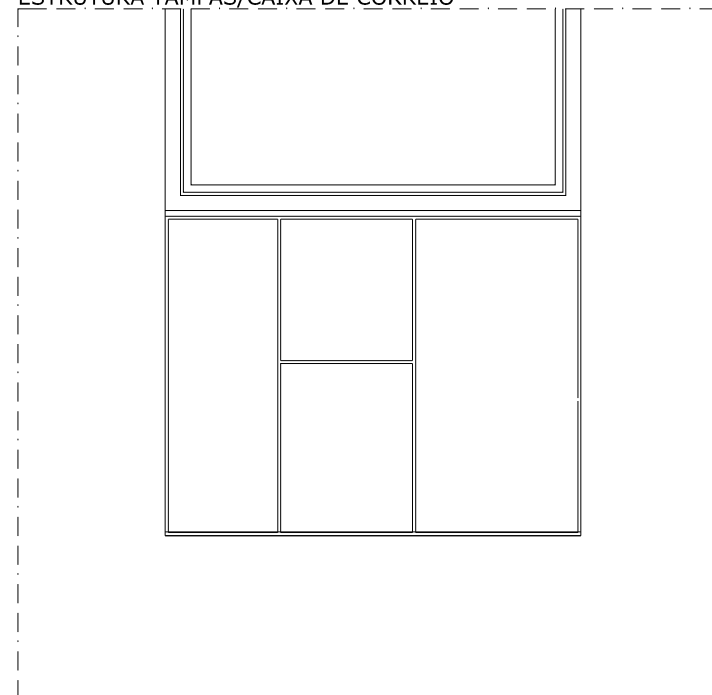
TAMPAS



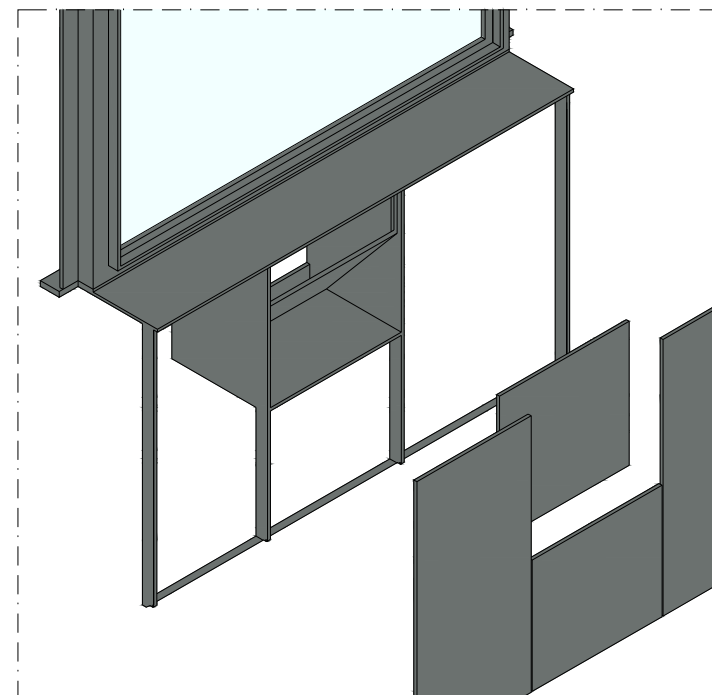
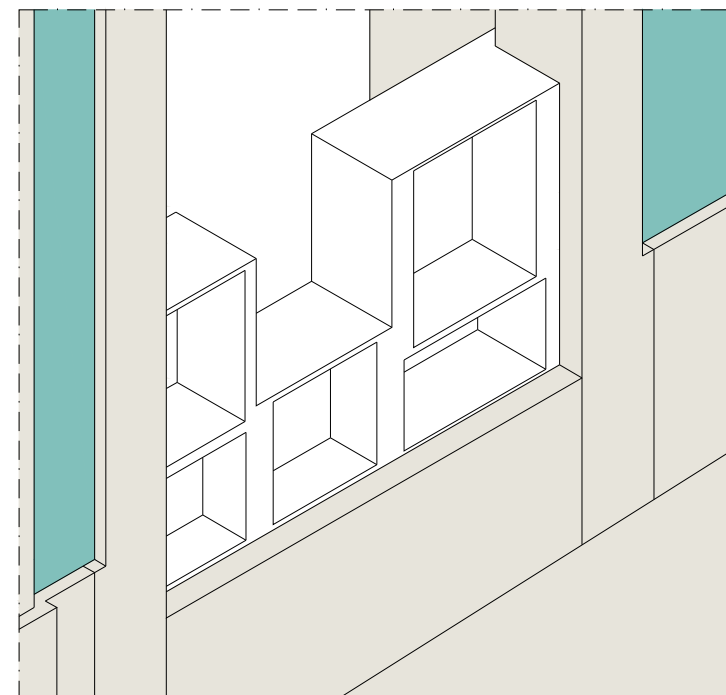
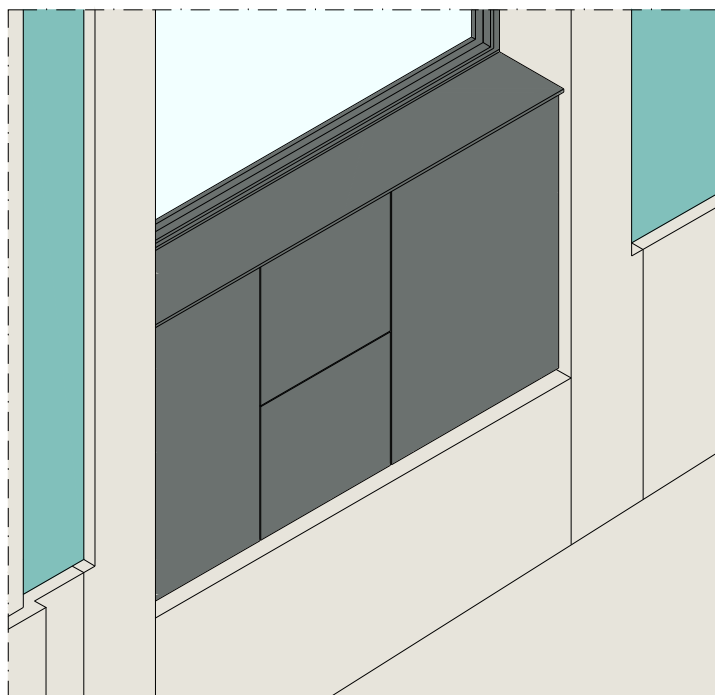
CAIXAS



ESTRUTURA TAMPAS/CAIXA DE CORREIO



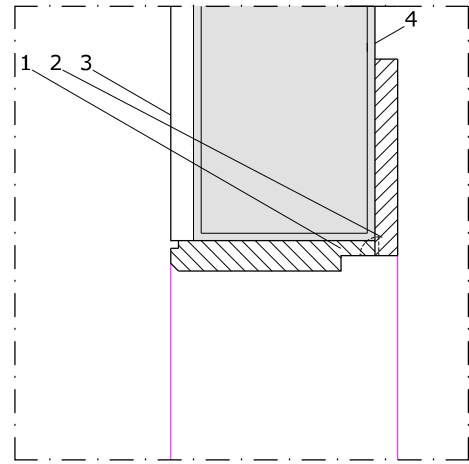
- a caixa de contagem (electricidade)
230x400 int.
- b portinhola p100 (electricidade)
235x285 int. 276x315 ext.
- c CEMU C1 (telecomunicações)
274x324 int.
- d caixa de abrigo s 2300 (gás)
325x467 int. 350x485 ext.
- e caixa contador (água)
375x241 int. 478.9x326.3 ext.



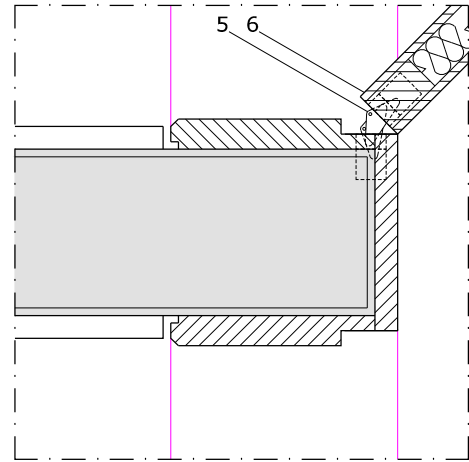
14b/₂₄

NOVEMBRO 2012

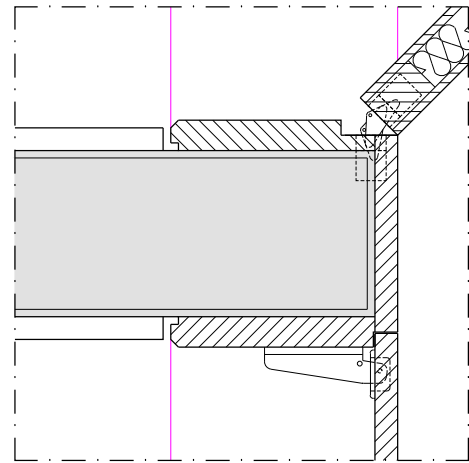
PH1



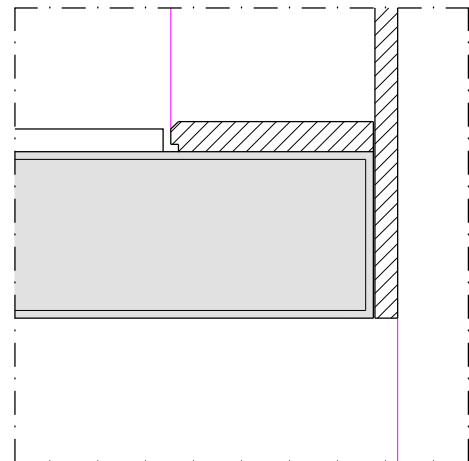
PH2



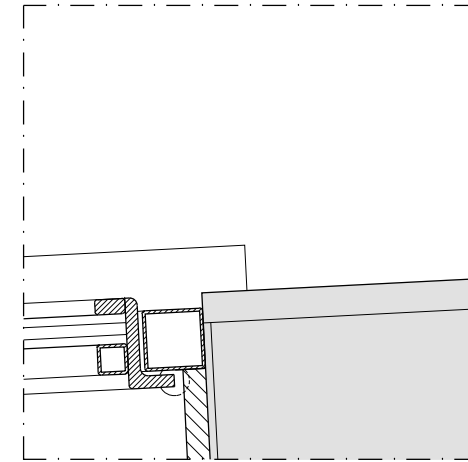
PH3



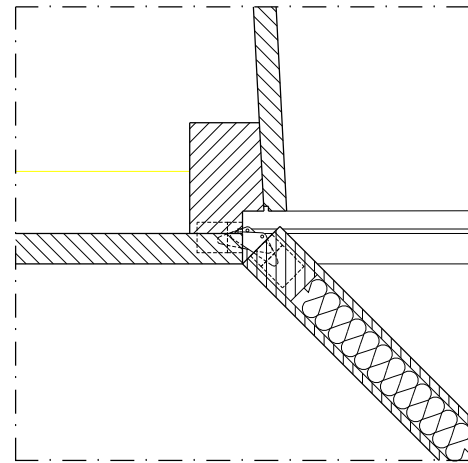
PH4



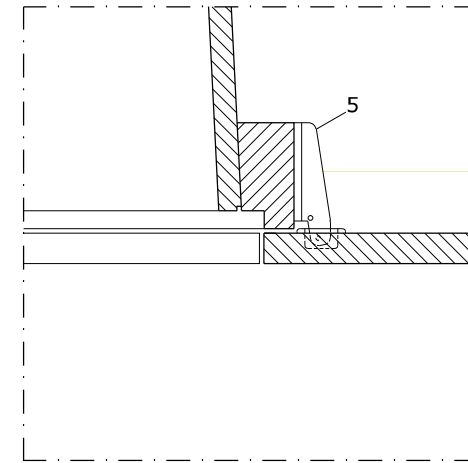
PH5



PH6



PH7



- 1 marco/batente
- 2 contratesta/painel
- 3 mármore (40x40)
- 4 reboco
- 5 dobradiça oculta
- 6 folha

15b/24

ABRIL 2013

REQUALIFICAÇÃO
DOM FREI CAETANO BRANDÃO, BRAGA

PORMENORES HORIZONTAIS (PH1-PH7)

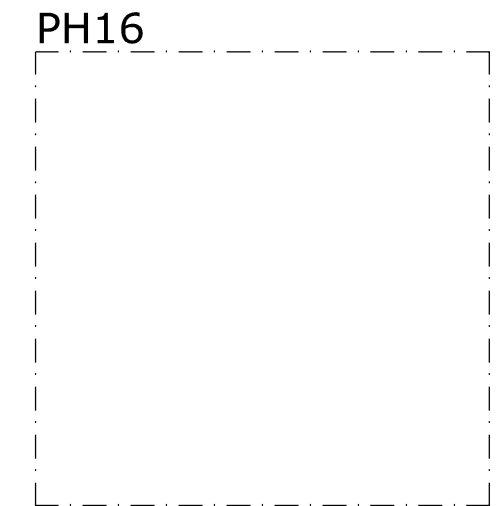
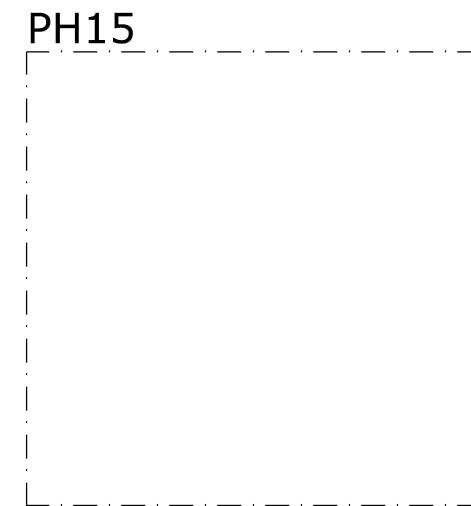
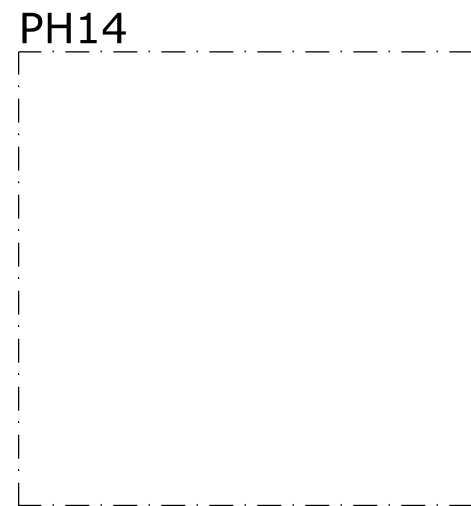
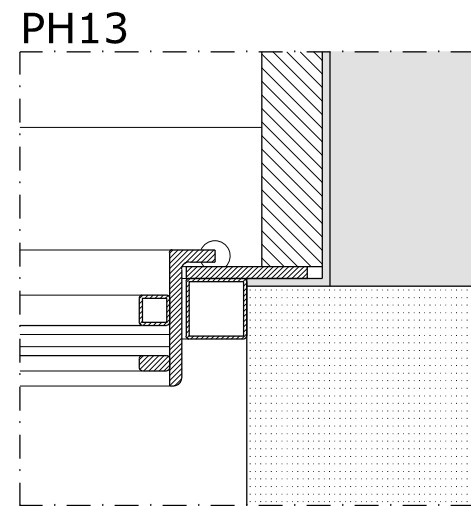
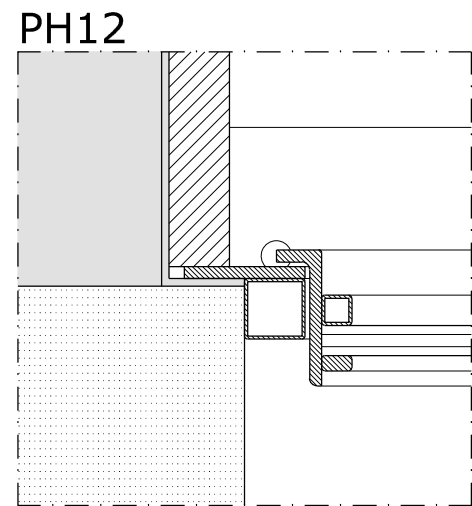
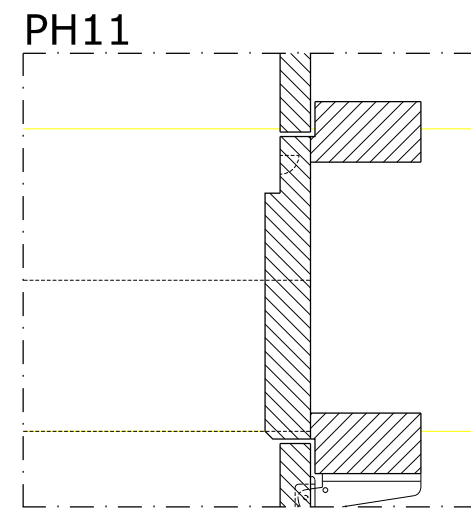
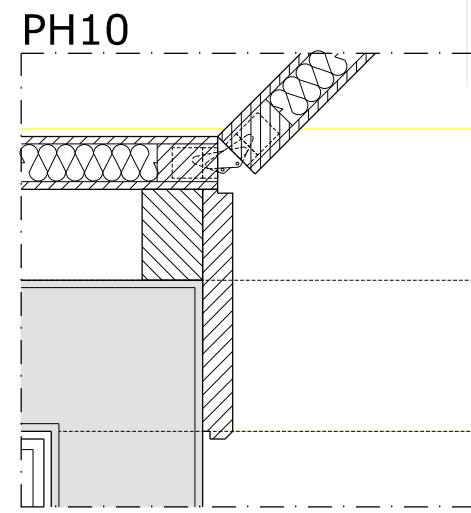
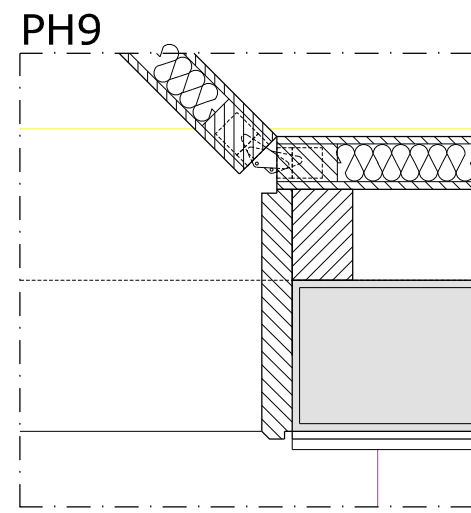
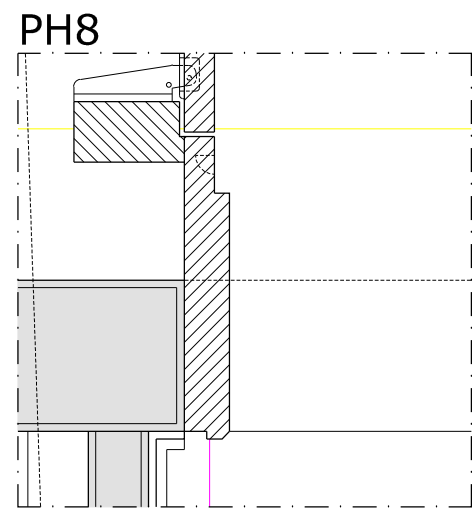
ESCALA 1/5

RS03

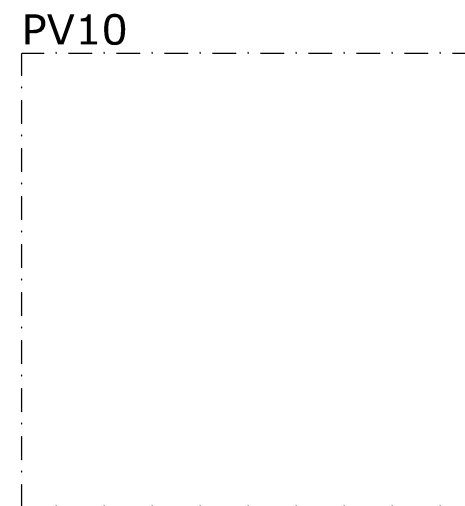
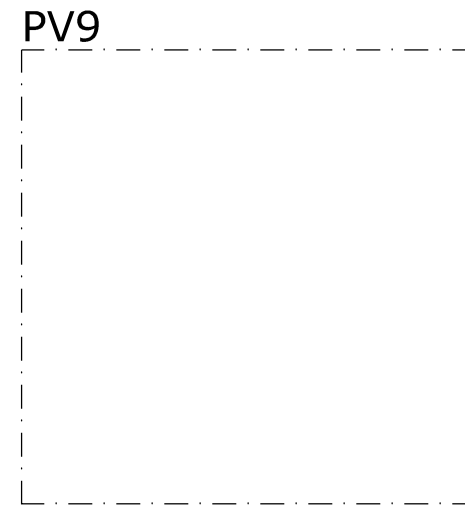
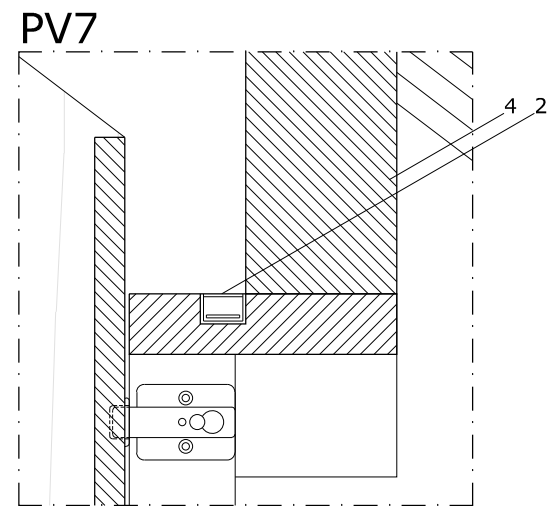
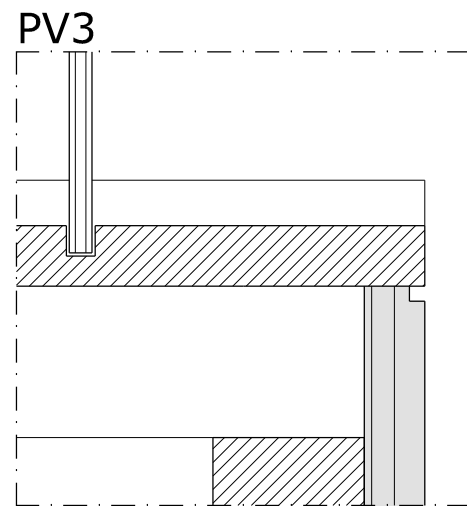
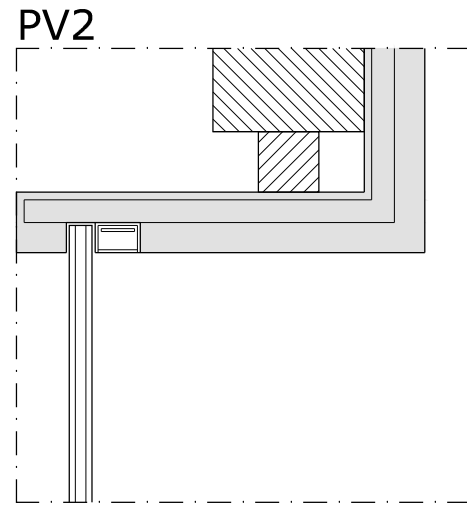
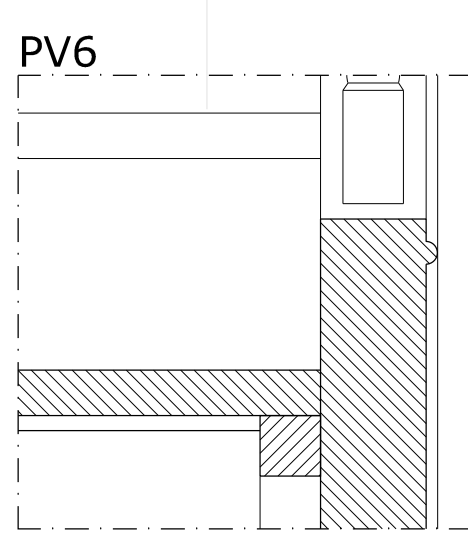
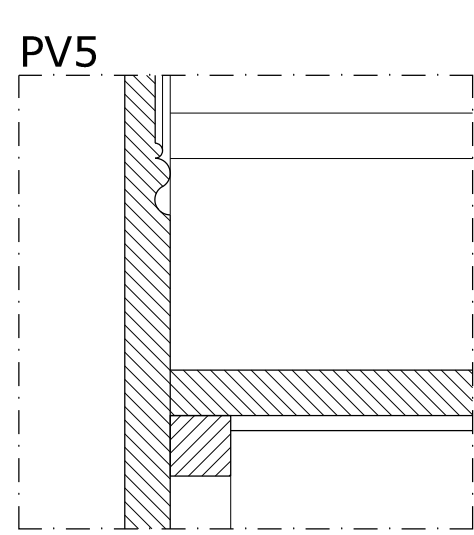
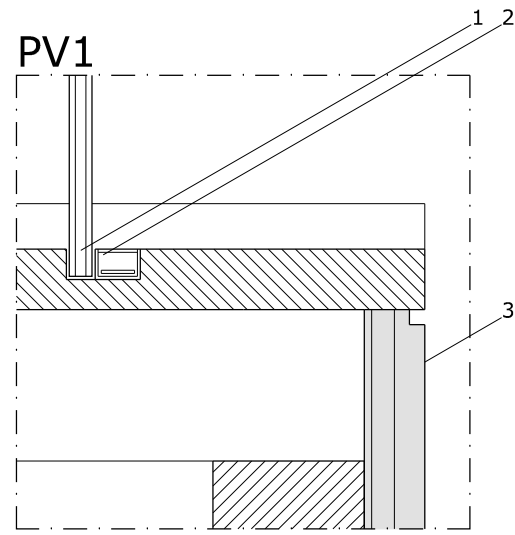


TIAGO DO VALE ARQUITECTOS

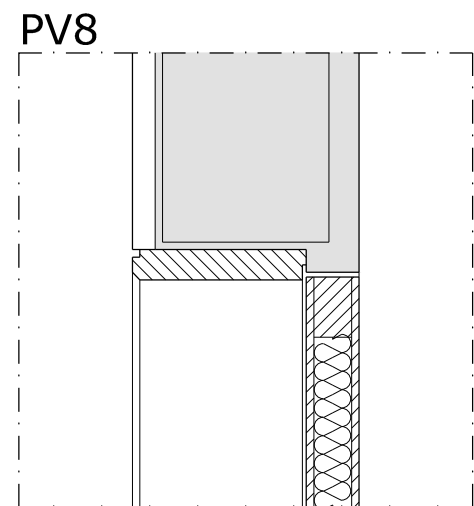
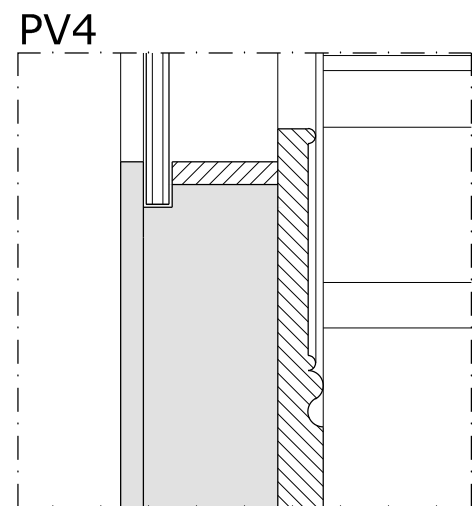
WWW.TIAGODOVALE.COM



16b/24
NOVEMBRO 2012



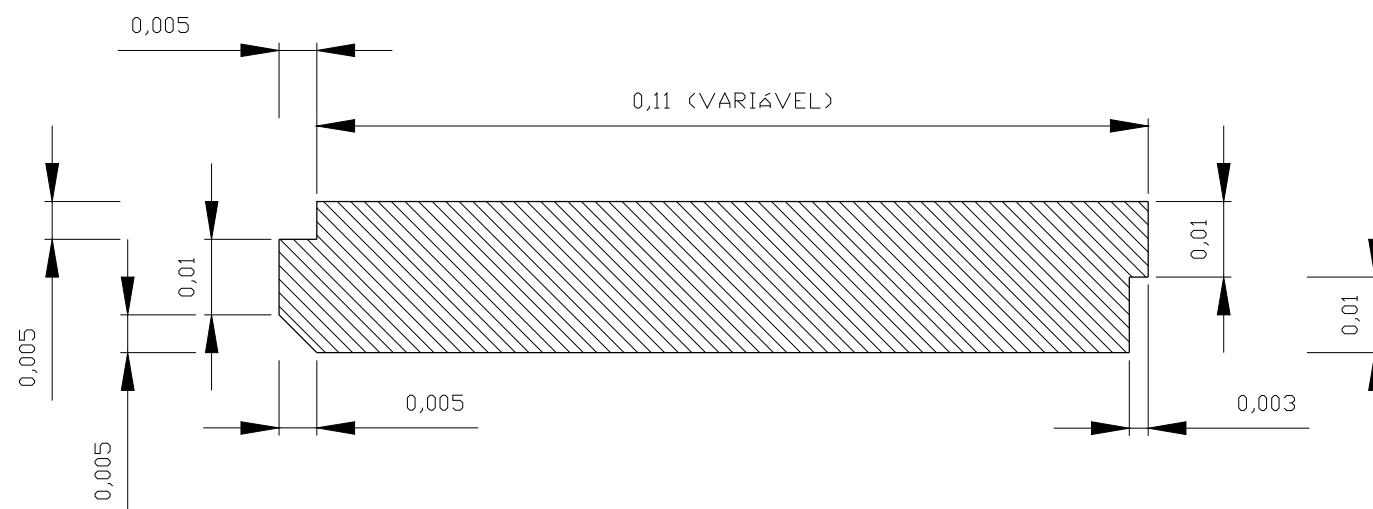
- 1 guarda em vidro
- 2 sistema de iluminação LED
- 3 gesso cartonado rebocado
- 4 viga



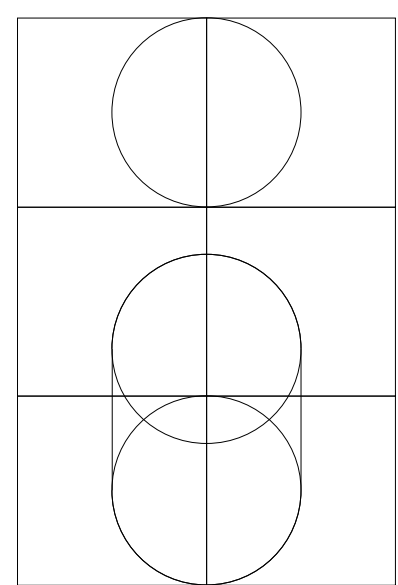
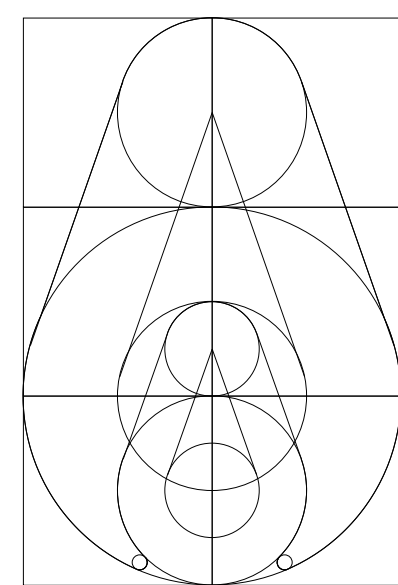
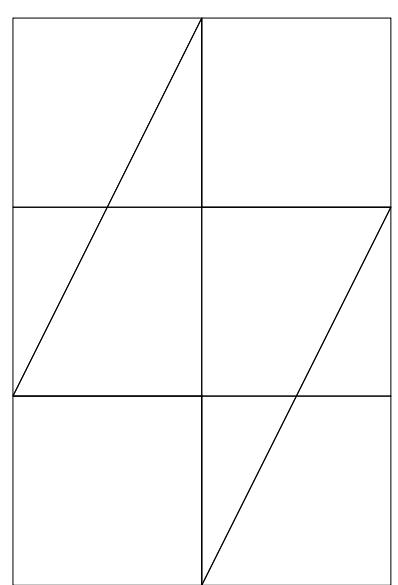
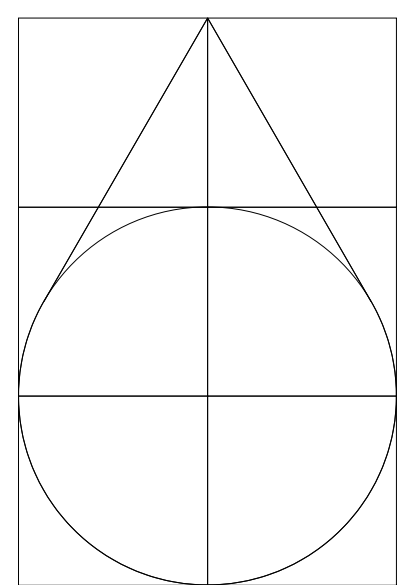
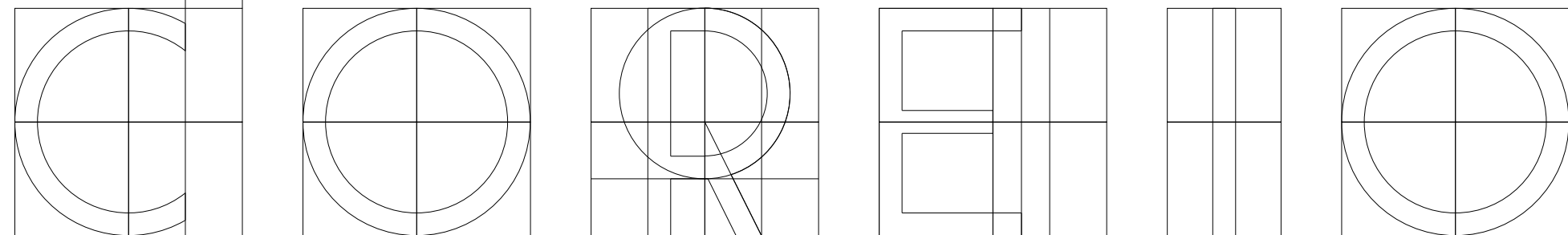
17b/24
NOVEMBRO 2012

REQUALIFICAÇÃO
DOM FREI CAETANO BRANDÃO, BRAGA
PORMENORES VERTICAIS

ESCALA 1/5
RS03



O O R R E I O



19/24
AGOSTO 2012