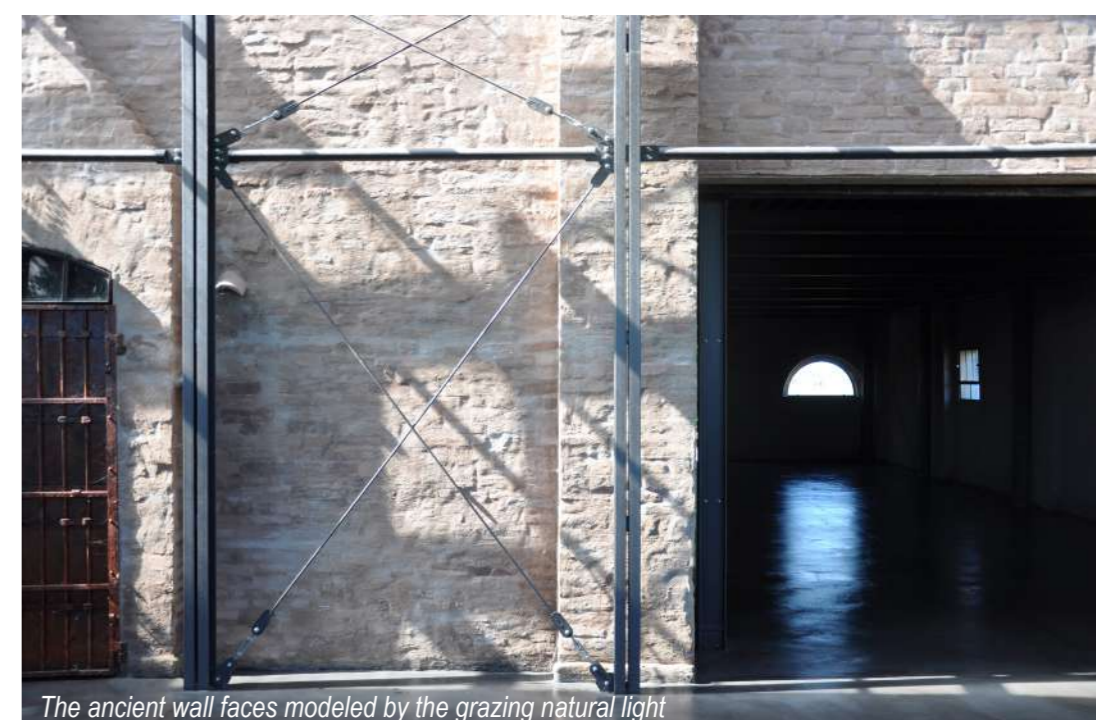
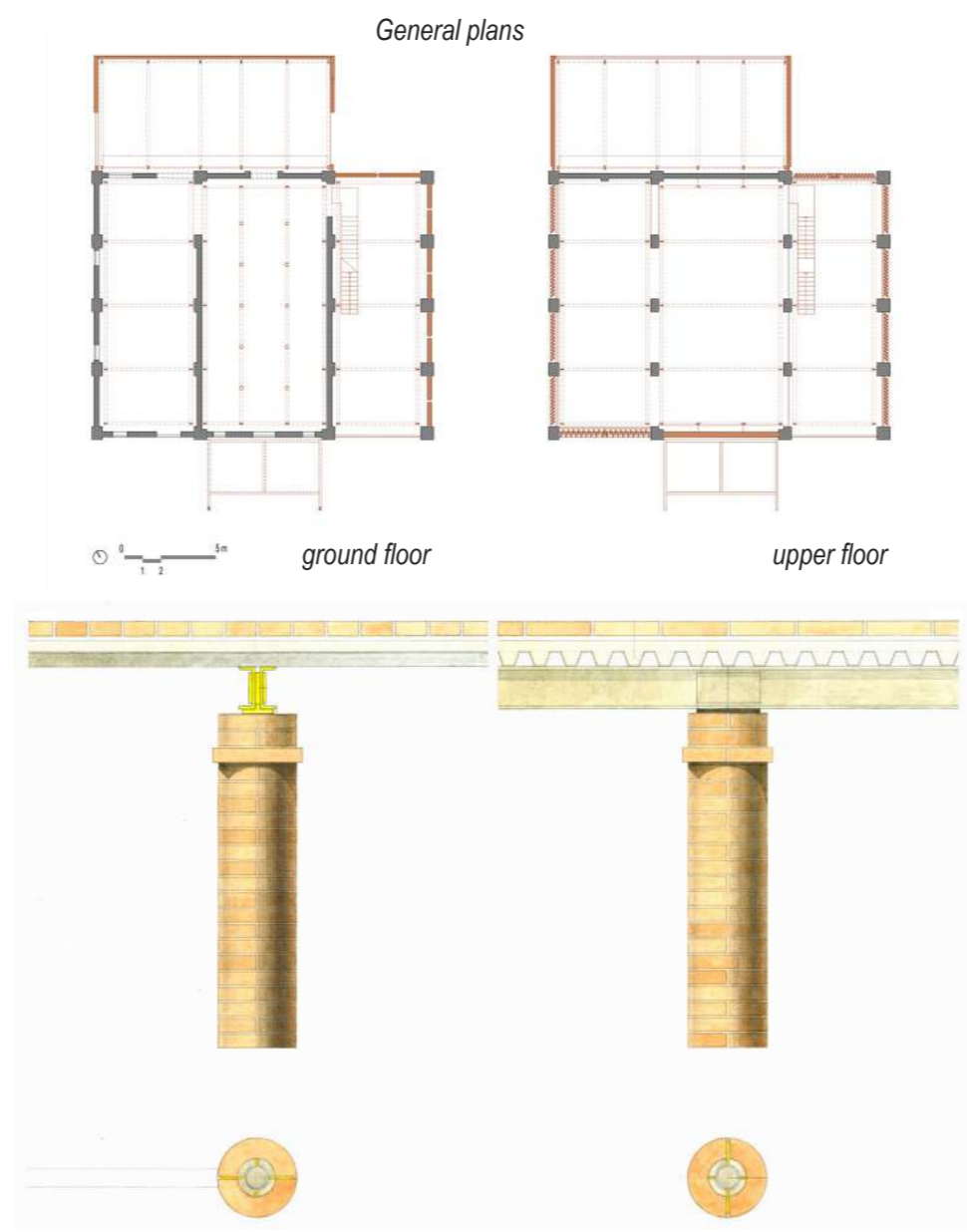


'Casazza' farmer factory rehabilitation. A new Landscape Study Center in Emilian countryside, Ferrara (Italy). Renew by evoking memory

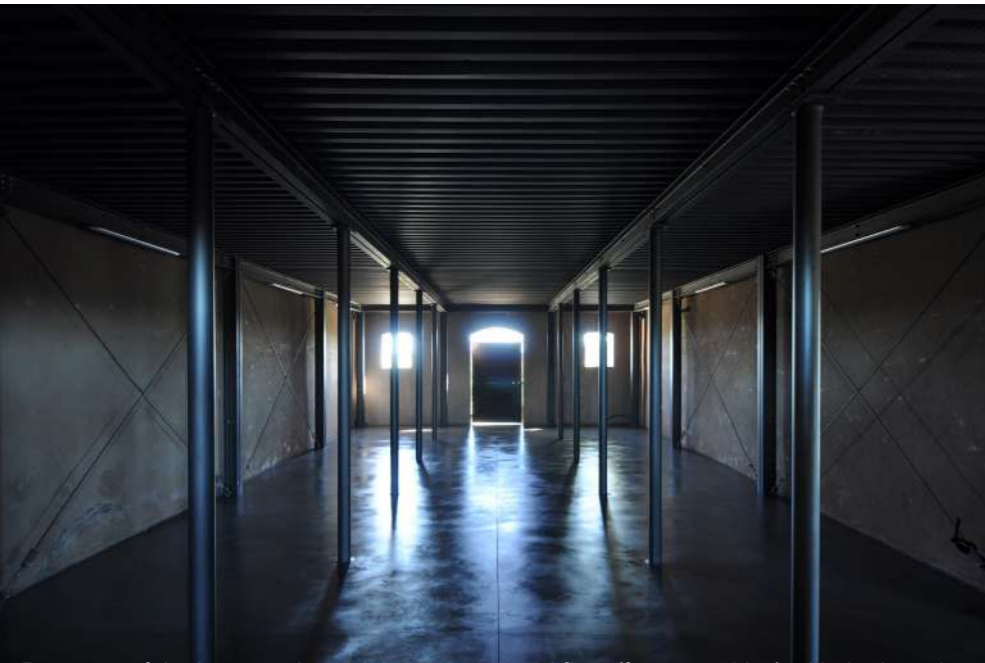


Reconstruction of the completion module to the north, with the skylight in line to 'detach' the new volume from the existing factory

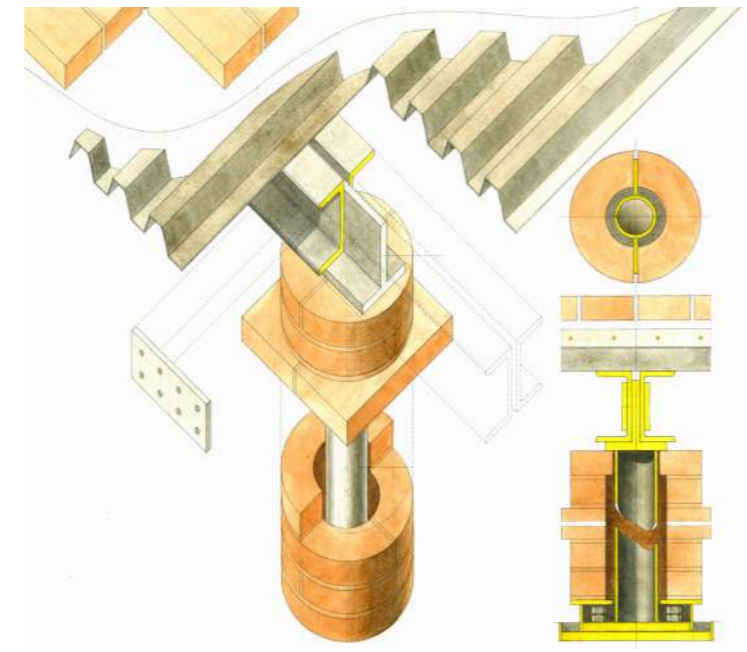
Minimal and measured interventions on the external envelope show the successive stratifications that shaped it. Selective excavations and "creative demolitions" expose the building as a "museum of itself".



The ancient wall faces modeled by the grazing natural light



Recovery of the barycentric module on the ground floor (former stables) with the insertion of the new metal frames and the floor fabrics smoothed with quartz and treated



Details of the columns reconstructed in the barycentric 'nave' on the ground floor (pencil and watercolor drawing)



Reconstruction of the completion volume towards the north, with the insertion of new metal frames and floor fabrics smoothed with quartz and treated